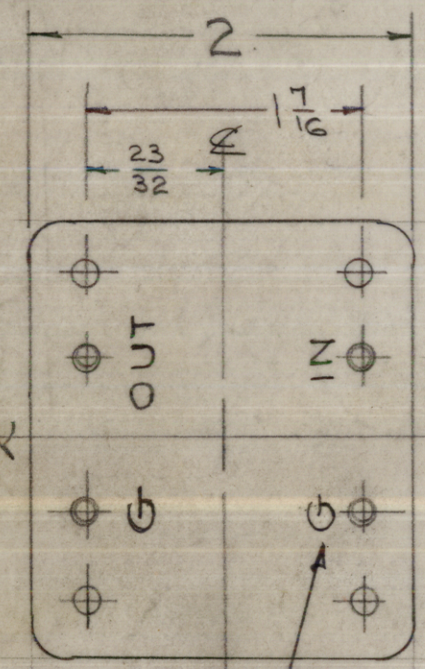


5
EX-159

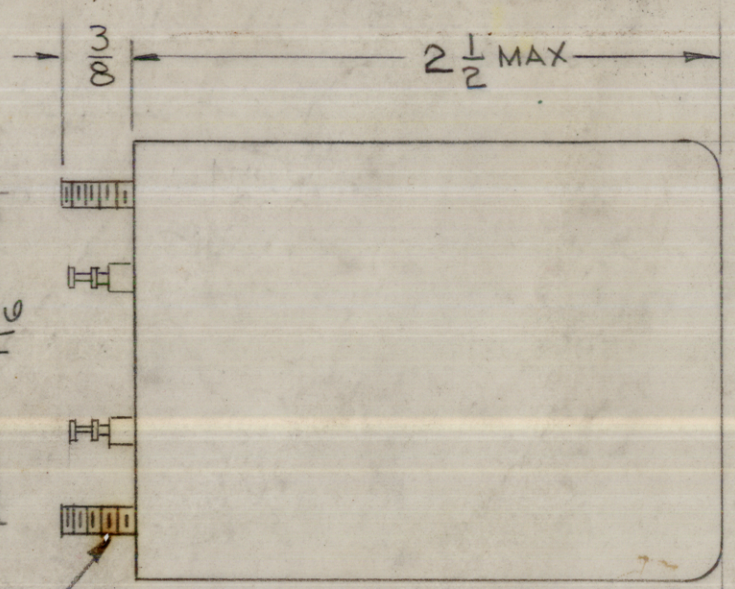
NOTICE TO PERSONS RECEIVING THIS DRAWING

THE TECHNICAL MATERIEL CORPORATION claims proprietary right in the material disclosed hereon. This drawing is issued in confidence for engineering information only and may not be reproduced or used to manufacture anything shown hereon without permission from THE TECHNICAL MATERIEL CORPORATION to the user. This drawing is loaned for mutual assistance and is subject to recall at any time.

Property of:
THE TECHNICAL MATERIEL CORPORATION
MAMARONECK, NEW YORK

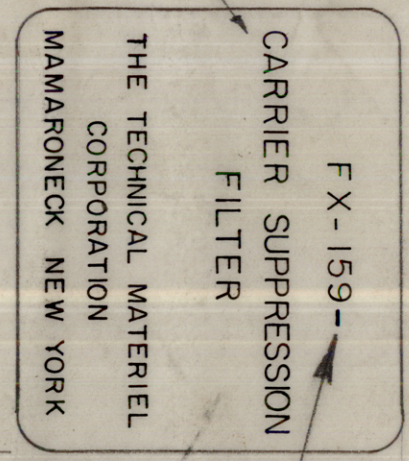


METAL STAMP AS SHOWN
1/8 HIGH GOTHIC



6-32 x 3/8 STUDS
4 REQ

LETTERING APPROX. SIZE SHOWN, BLACK GOTHIC.



MARK TMC PIN WITH LATEST REV. LETTER

ELECTRICAL SPECIFICATIONS:
TYPE: Carrier Suppression

CARRIER FREQUENCY: 250 KC.
NOTCH: -30 db Minimum for Frequencies between 249.985 to 250.015 KC.

PASSBAND RIPPLE: 1db maximum for Frequencies between 241 KC. to 249.800 KC or greater, and 250.200 KC (or less) to 259 KC.

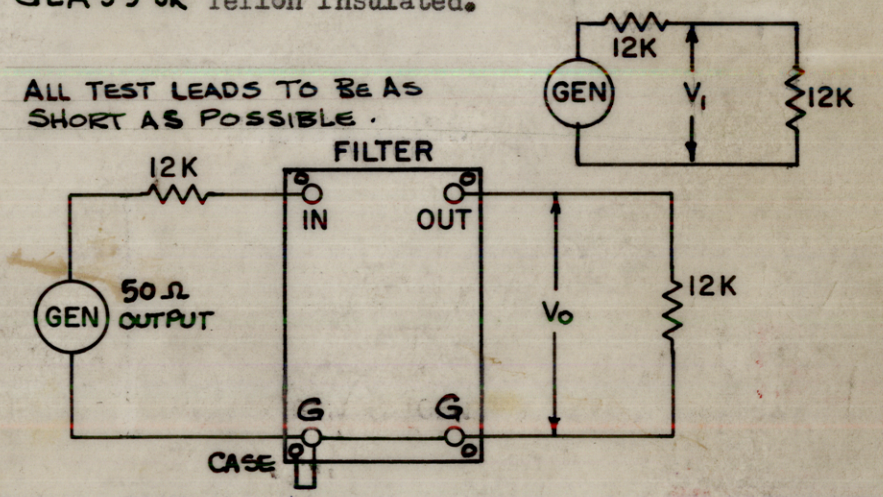
INSERTION LOSS: -2 db +1 db (See schematic below for measuring Filter Loss.)

INPUT IMPEDANCE: 12,000 ohms Unbalanced
OUTPUT IMPEDANCE: 12,000 ohms Unbalanced

TEMPERATURE RANGE: - 0° to +70°C.

MECHANICAL SPECIFICATION:

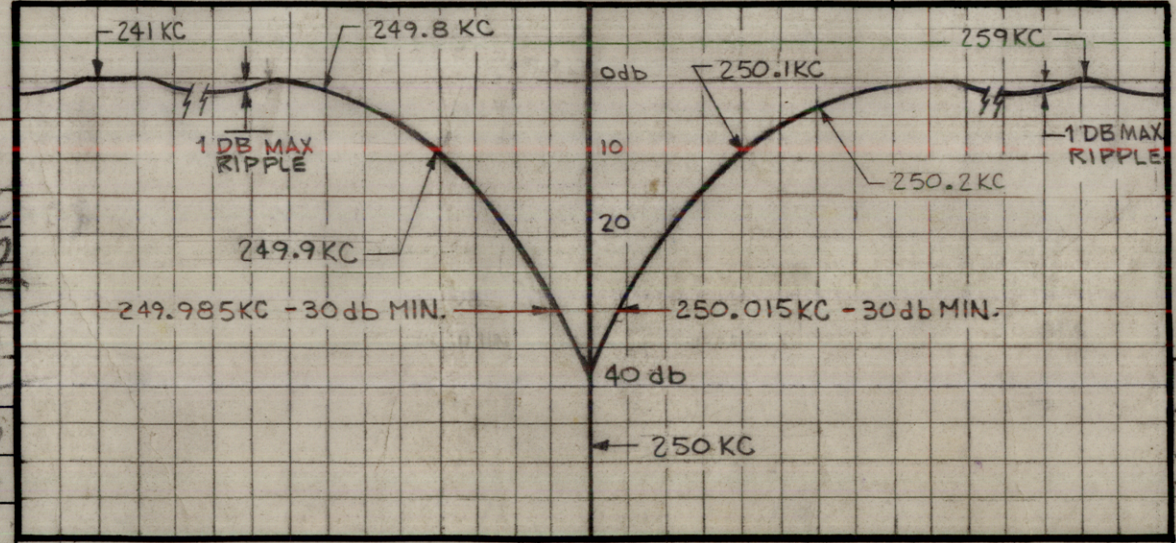
CASE: Steel
FINISH: TMC Gray (S-115) OR BRUSHED NICKEL
NOTE: Terminal End Unpainted
MOUNTING: 6-32 X 3/8 studs (4 req.)
TERMINAL: Double End Pin Type, Brass, Silver Plated
GLASS OR Teflon Insulated.



ALL TEST LEADS TO BE AS SHORT AS POSSIBLE.

INSERTION (LOSS OR GAIN) = $\pm(V_1 - V_0)$ IN DB

FILTER CHARACTERISTIC CURVE



J	"OR POWDER BLASTED NICKEL ADD ELEC SPECS GLASS OR APD MECH SPECS	9/30/66	16923	440	JCS	MA
I	ADD MARK NOTE, ADD "50 OHM OUT" ADD CONN. STAMPING	1/31/66	15602	HCA	JCS	
G	CLERICAL CHANGE	12/31/65	CC	J.V.V.	JCS	
F	TEST SCHEM & SPECS REVISED	6/26/63	8346		JCS	
E	2-1/2 DIM WAS 2-3/8	6-4-63	9169		JCS	
D	3 SCHEMATIC ADDED	1-30-	80		JCS	
D	2 ELEC. SPECS. CLARIFIED	63	80		JCS	
D	1 FILTER CHAR. CURVE ADDED				JCS	
C	INSERTION LOSS WAS 35 db AT F = 250 KC	5/9/60		file	file	JCS
B	INSERTION LOSS WAS 40 db AT F = 250 KC	4/15/60	2157	file	file	JCS
A	ELECT. SPECS REVISED	11/9/59	1527	file	file	JCS

ISSUE	ITEM	CHANGED FROM	DATE	CH. NO.	DRAFTS	CHECKER	ENG. APP.
TOLERANCES			SCALE:				

DEC. DIM. ±
FRAC. DIM. ±
ANGULAR DIM. ±

MAXIMUM ALLOWABLE TOLERANCES HAVE BEEN DETERMINED AND ANY DEVIATIONS WILL BE CAUSE FOR REJECTION. REMOVE ALL BURRS AND SHARP EDGES

REQ. PER UNIT	MODEL	PROJECT NO.	ASSY. NO.	DATE
	SBE-8,9,10		AX-205	7-9-59
USED ON				

REQ. ITEM	PART NO.	DESCRIPTION	SYMBOL
THE TECHNICAL MATERIEL CORP. MAMARONECK, NEW YORK			
CARRIER SUPPRESSION FILTER			
DRAWN		CHECKED	FINAL APPROVAL
RUB		RUB	FX-159 J
FINISH & SPEC. NO.		ELEC. DES. APP	MECH. DES. APP