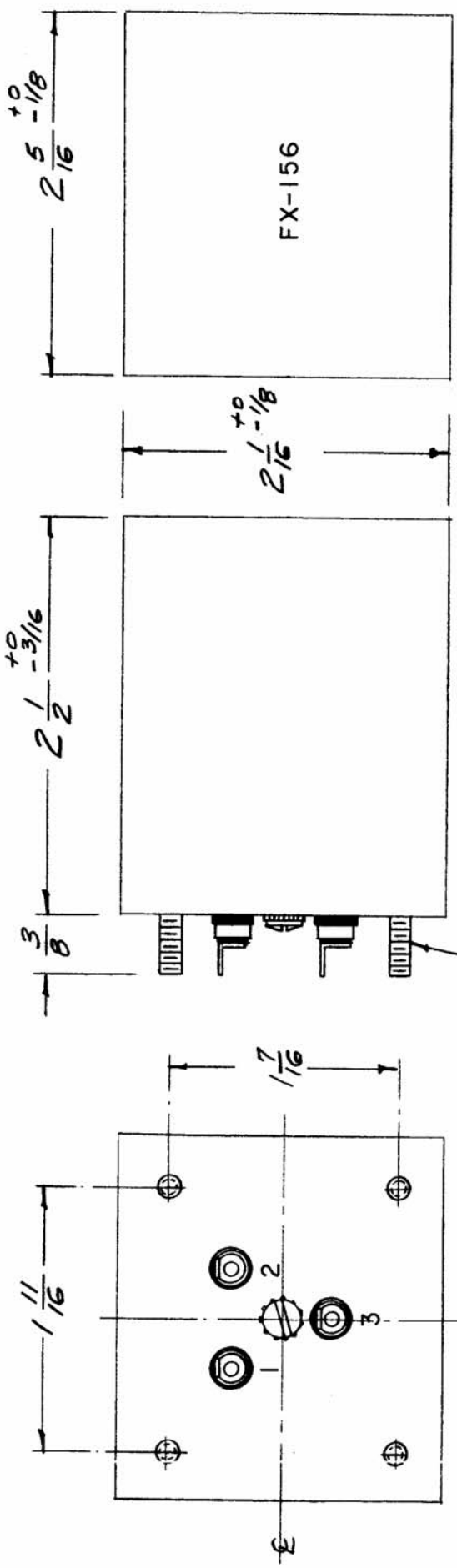


REQ. PART UNIT	USED ON	DATE
1	ASSY. NO.	2-26-59
	MODEL	
	TTG	

FX-156



6-32 Thds.

**ELECTRICAL SPECIFICATIONS:**

- Bandpass = 935 cps ( $\pm 10$  cps)
- Input Impedance = 600  $\Omega$
- Output Impedance = 600  $\Omega$

**MECHANICAL SPECIFICATIONS:**

CASE: Rectangular, Steel, MIL Type FB, Hermetically Sealed.  
 FINISH: TMC Smooth Grey Enamel (Except Terminal End)

REQ. ITEM	DESCRIPTION	SYMBOL
	THE TECHNICAL MATERIEL CORP. MAMARONECK, NEW YORK	
	FILTER, BANDPASS, 935CPS	
	DATE: 6/2/59	CHECKED: [Signature]
	DRAWN: [Signature]	FINAL APPROVAL: [Signature]
	TYPE & TEMPER	HEATTREAT. SPEC.
	FINISH & SPEC. NO.	

SCALE: FULL  
 MAXIMUM ALLOWABLE TOLERANCES HAVE BEEN DETERMINED AND ANY DEVIATIONS WILL BE CAUSE FOR REJECTION. REMOVE ALL BURRS AND SHARP EDGES