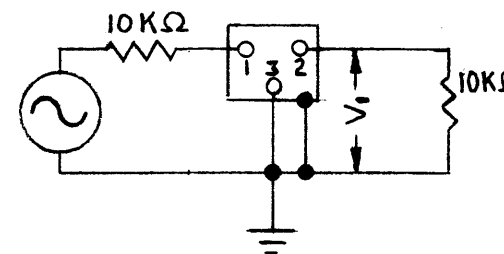
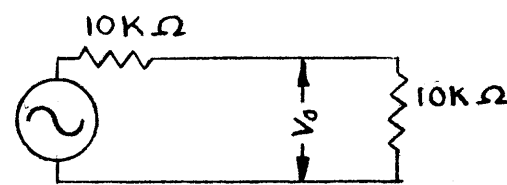
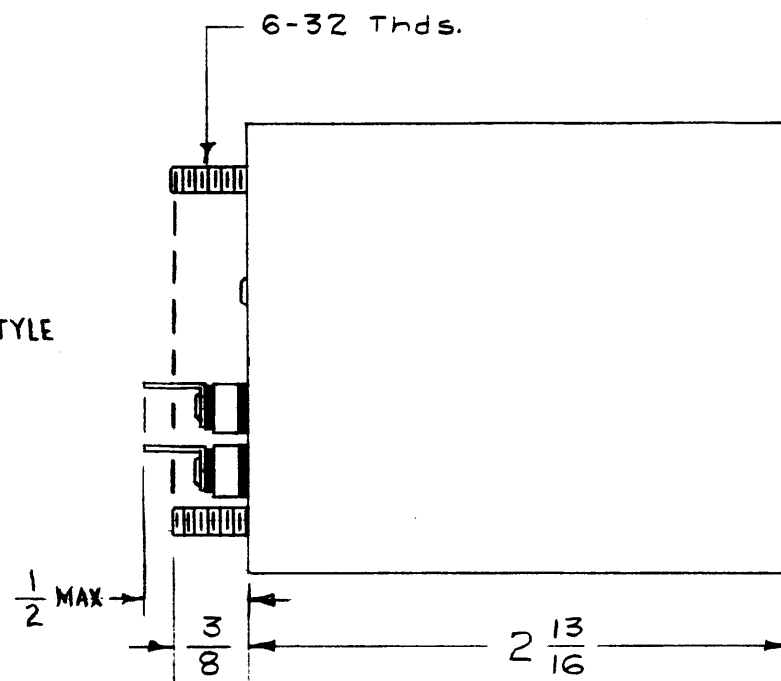
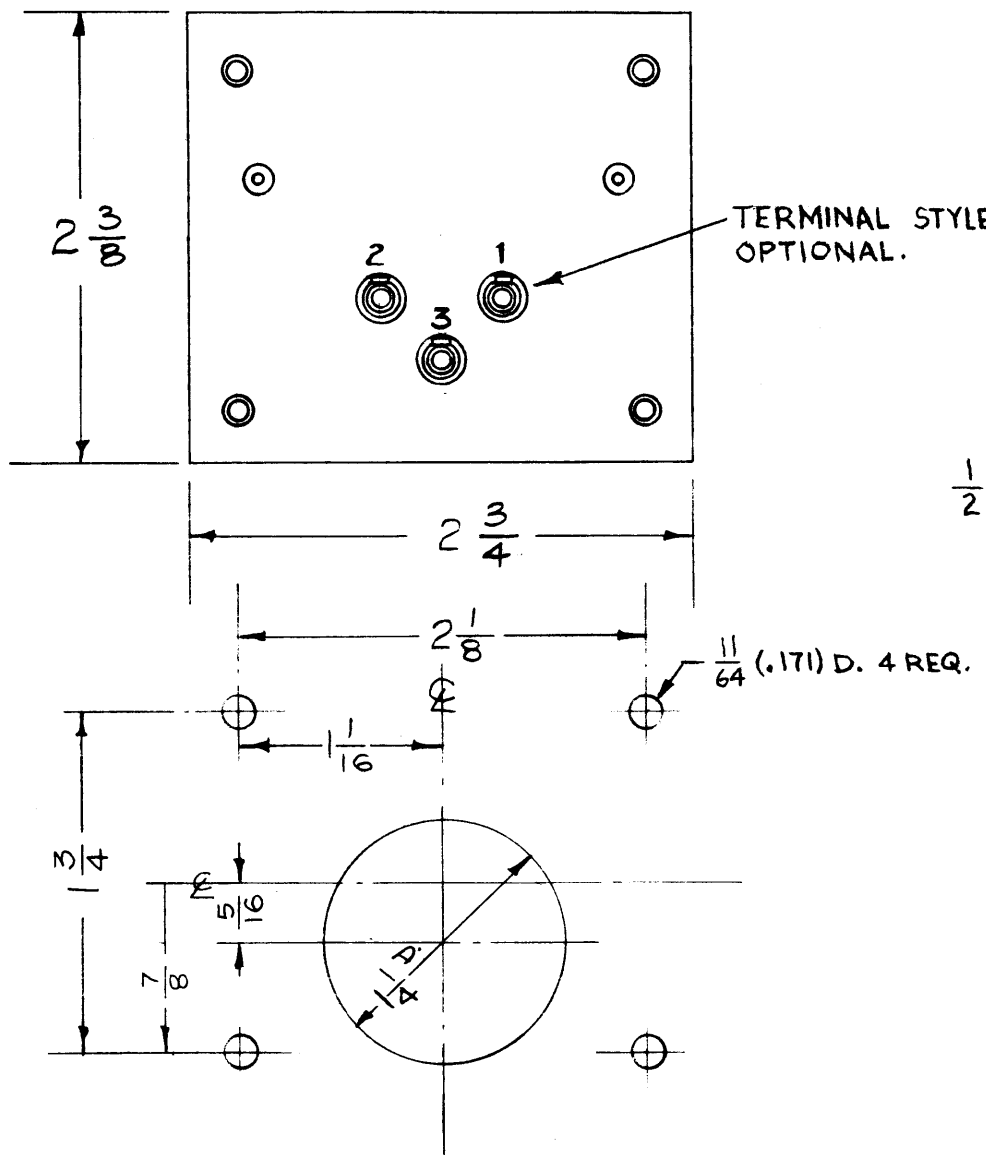


EX 153 C

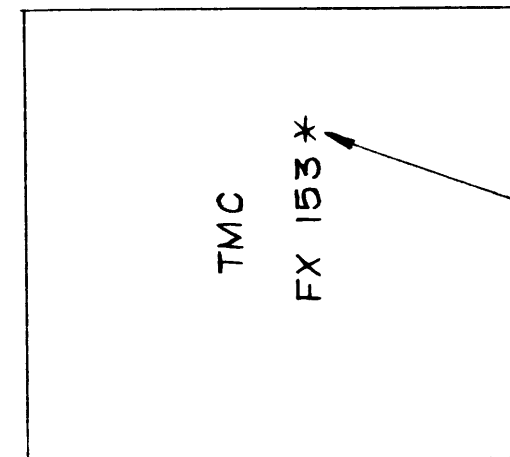
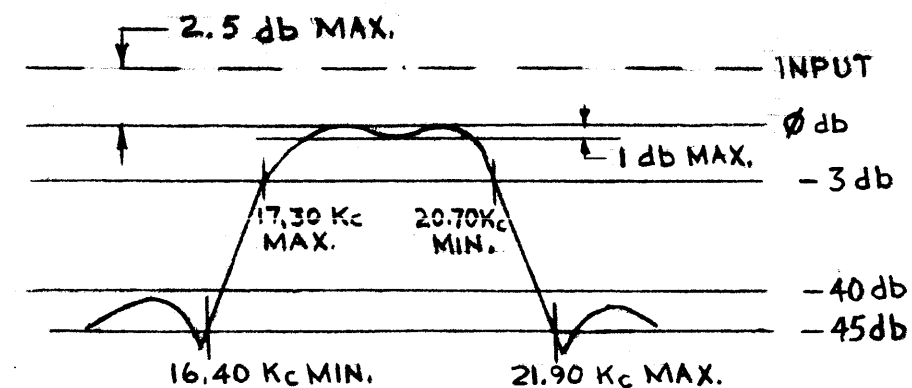
ELECTRICAL SPECIFICATIONS

1. TYPE: BAND PASS
2. db MEASUREMENTS: ALL db MEASUREMENTS ARE RELATIVE TO THE MAX. SIGNAL RESPONSE IN THE PASSBAND.
3. -3db POINTS: 17.30Kc MAX. AND 20.70Kc MIN.
4. -45 db POINTS: 16.40Kc MIN. AND 21.90Kc MAX.
5. RETURN LOBES: AT LEAST -40db
6. PASSBAND RIPPLE: 1 db MAX.
7. INSERTION LOSS: 2.5db MAX.
8. INPUT IMPEDANCE: 10,000Ω
9. OUTPUT IMPEDANCE: 10,000Ω



INSERTION LOSS = $V_0 - V_1$ (db).
GENERATOR TERMINAL VOLTAGE HELD CONSTANT.

NOTE: PIN 3 TO BE GROUND TO CASE.



ADD LATEST REV. LETTER

QUALITY ASSURANCE DEPARTMENT

THE TECHNICAL MATERIEL CORPORATION claims proprietary right in the material disclosed herein. This drawing is issued in confidence for engineering information only and may not be reproduced or used to manufacture anything shown hereon without permission from THE TECHNICAL MATERIEL CORPORATION to the user. This drawing is loaned for mutual assistance and is subject to recall at any time.

Property of:

THE TECHNICAL MATERIEL CORPORATION
MAMARONECK, NEW YORK

C	3	SCHEMATICS & NOTE ADD. PERFORMANCE GRAPH ADD.	1-15-65	13314	R.L.	CA	
	2	ELECT. SPECS REVISED; MECH. SPECS RELOC. TO TITLE BLK					
B	1	SEE EMN#10883	2/10/64	10883A.M.	T.R.		
A	1	DIM. CHG'D FROM 2-13/64 TO 2-3/8 AS PER BX-152	1/8/58	1	KG		
ISSUE	ITEM	CHANGED FROM	DATE	CH. NO.	DRAFTS	CHECKER	ENG. APP.

TOLERANCES		SCALE: 4A 140B
DEC. DIM. ±	MAXIMUM ALLOWABLE TOLERANCES HAVE BEEN DETERMINED AND ANY DEVIATIONS WILL BE CAUSE FOR REJECTION.	
FRAC. DIM. ±	REMOVE ALL BURRS AND SHARP EDGES	
ANGULAR DIM. ±		

1	MSR-1	Z1	4-3-57
REQ. PER UNIT	MODEL	PROJECT NO.	DATE
USED ON			

REQ. ITEM	PART NO.	DESCRIPTION	SYMBOL
	//	THE TECHNICAL MATERIEL CORP. MAMARONECK, NEW YORK	
		STOCK SIZE	
		STEEL	
		MATERIAL	
		HOT TIN DIP	
		TYPE & TEMPER	64-3-57
		HEAT TREAT. SPEC.	
		FINISH & SPEC. NO.	
		DRAWN	A.J.J.
		CHECKED	
		ELEC. DES. APP.	
		MECH. DES. APP.	
		FX 153 C	