

FX 152 G

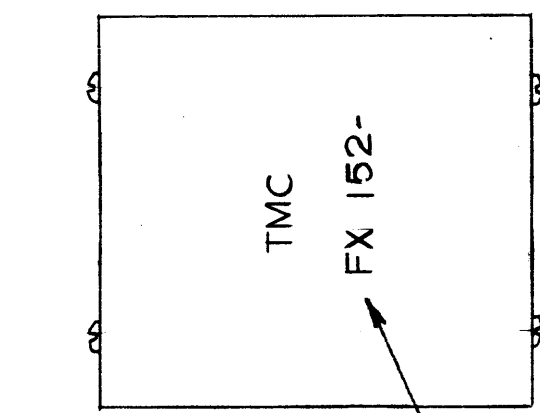
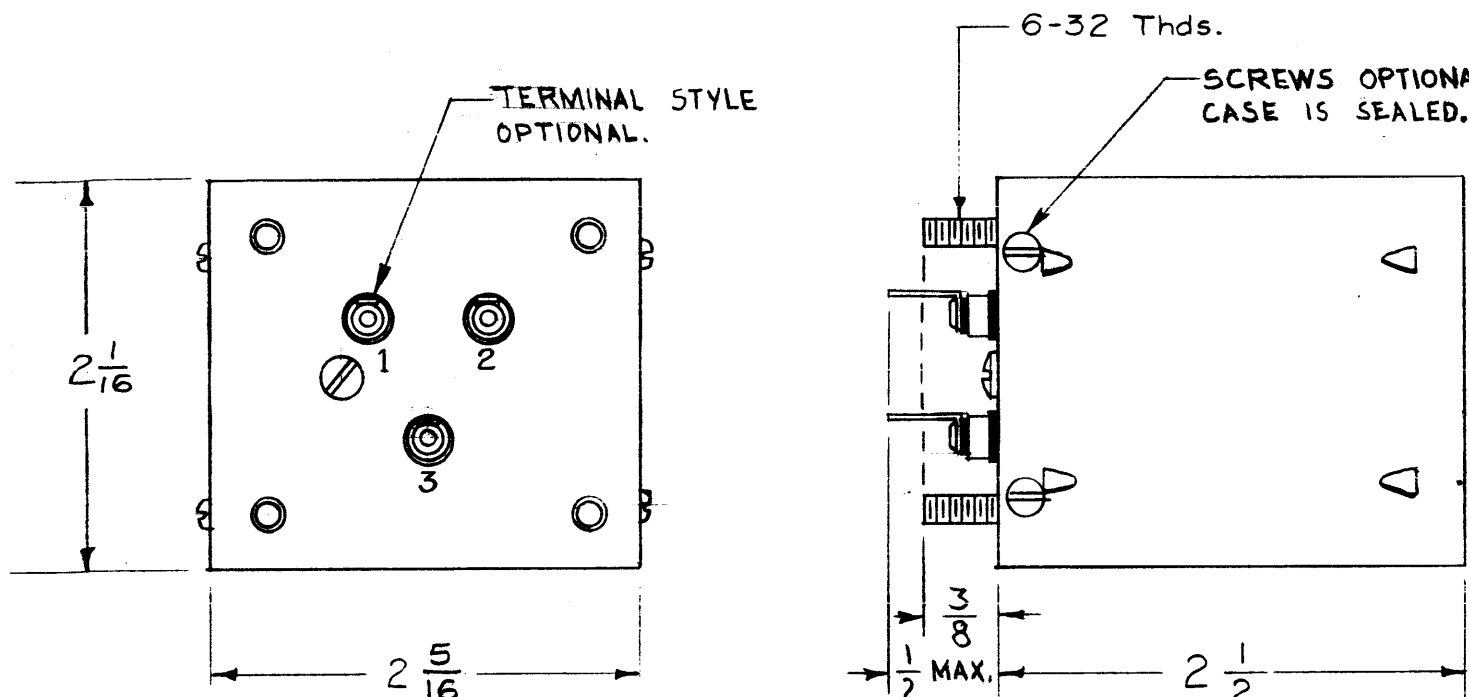
**ELECTRICAL SPECIFICATIONS**

1. TYPE: LOW PASS.
2. db MEASUREMENTS: ALL db MEASUREMENTS ARE RELATIVE TO MAXIMUM SIGNAL RESPONSE IN PASSBAND.
3. -3db POINT: 15000 CPS ±500 CPS.
4. ATTENUATION: EQUAL TO OR MORE THAN -50 db AT 17000 CPS. ALL RETURN LOBES TO BE BELOW MINUS 35 db
5. MAXIMUM PASSBAND RIPPLE: ±0.5 db BETWEEN 300 CPS AND 3500 CPS.
6. INSERTION LOSS: EQUAL TO OR LESS THAN 1.0 db AT 2000 CPS.
7. INPUT IMPEDANCE: 10K OHMS (NOMINAL).
8. OUTPUT IMPEDANCE: 10K OHMS.

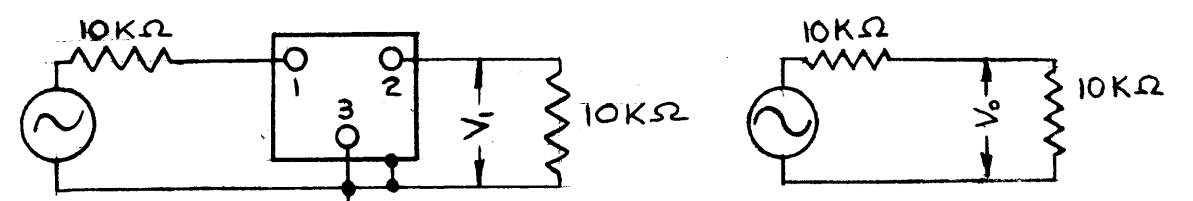
NOT TO BE REPRODUCED OR COPIED

THE TECHNICAL MATERIEL CORPORATION claims proprietary right in the material disclosed hereon. This drawing is issued in confidence for engineering information only and may not be reproduced or used to manufacture anything shown hereon without permission from THE TECHNICAL MATERIEL CORPORATION to the user. This drawing is loaned for mutual assistance and is subject to recall at any time.

Property of:  
THE TECHNICAL MATERIEL CORPORATION  
MAMARONECK, NEW YORK

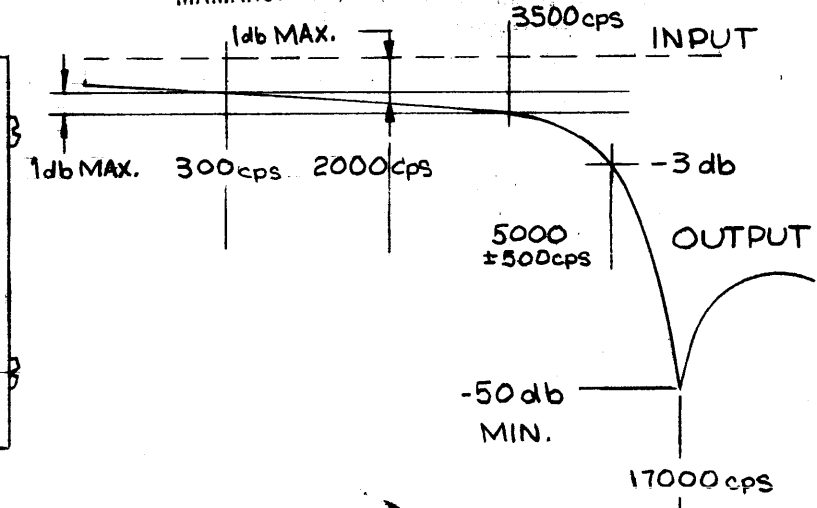
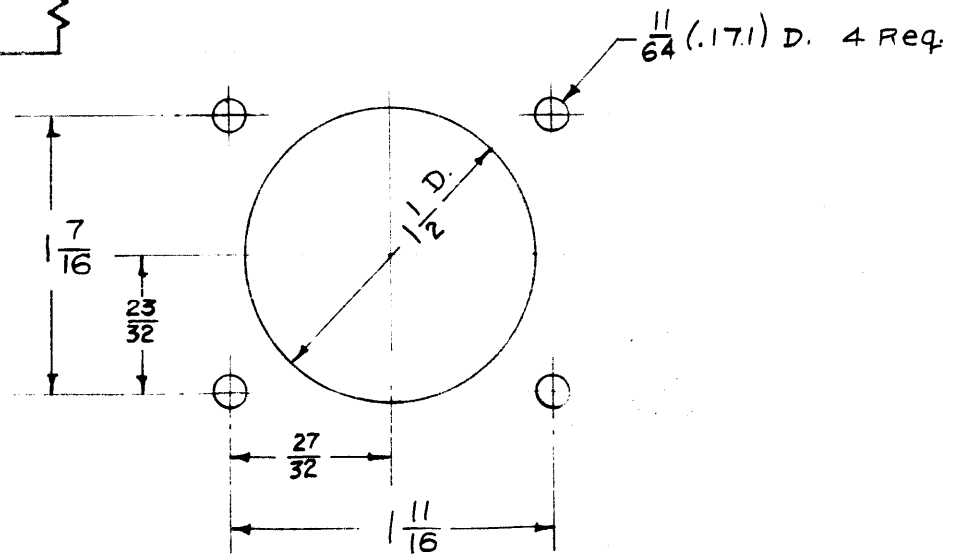


STAMP AS SHOWN  
1/8" HIGH BLACK GOTHIC  
W/LATEST REV. LETTER.



INSERTION LOSS =  $(V_0 - V_1)$  in db,  
GENERATOR TERMINAL  
VOLTAGE HELD CONSTANT.

NOTE: PIN 3 TO BE GROUNDED TO CASE FOR TEST



G	STEP 4 DELE. MAXIMUM ADD WORDING.	11/4/66	17116	RME	CP	P	
T	ON SCHEM: V, DELE; V0 WAS CHANGED TO V1; NOTE REVISED; SCHEM. SHOWING V0 ADDED; SINE MOUNTED SCREWS DELE (2PCS); MAX. DIM. ADD IC ADD. TO TITLE; "TERM. STYLE" SCREWS OPT. CALLOUTS ADD.	11B-65	13314	R.P.	@	[Signature]	
ISSUE	ITEM	CHAN. ED FROM	DATE	CH. NO.	DRAFTS	CHECKER	ENG. APP.
TOLERANCES		SCALE: 2A 1380					
DEC. DIM. ±		MAXIMUM ALLOWABLE TOLERANCES HAVE BEEN DETERMINED AND ANY DEVIATIONS WILL BE CAUSE FOR REJECTION.					
FRAC. DIM. ±		REMOVE ALL BURRS AND SHARP EDGES					
ANGULAR DIM. ±							

1	MSR	Z-2	2-26-57
REQ. PER UNIT	MODEL	PROJECT NO.	SYMBOL. NO.
USED ON			

REQ. ITEM	PART NO.	DESCRIPTION	SYMBOL
#		THE TECHNICAL MATERIEL CORP. MAMARONECK, NEW YORK	
STEEL		FILTER, LOW-PASS	
MATERIAL		LC	
HOT TIN DIP	#	4 2-26-57	A. J. J.
TYPE & TEMPER	HEAT TREAT. SPEC.	DRAWN	CHECKED
S115 TMC SMOOTH GREY ENAMEL		[Signature]	[Signature]
FINISH & SPEC. NO.	ELEC. DES. APP.	MECH. DES. APP.	FINAL APPROVAL
			FX 152 G