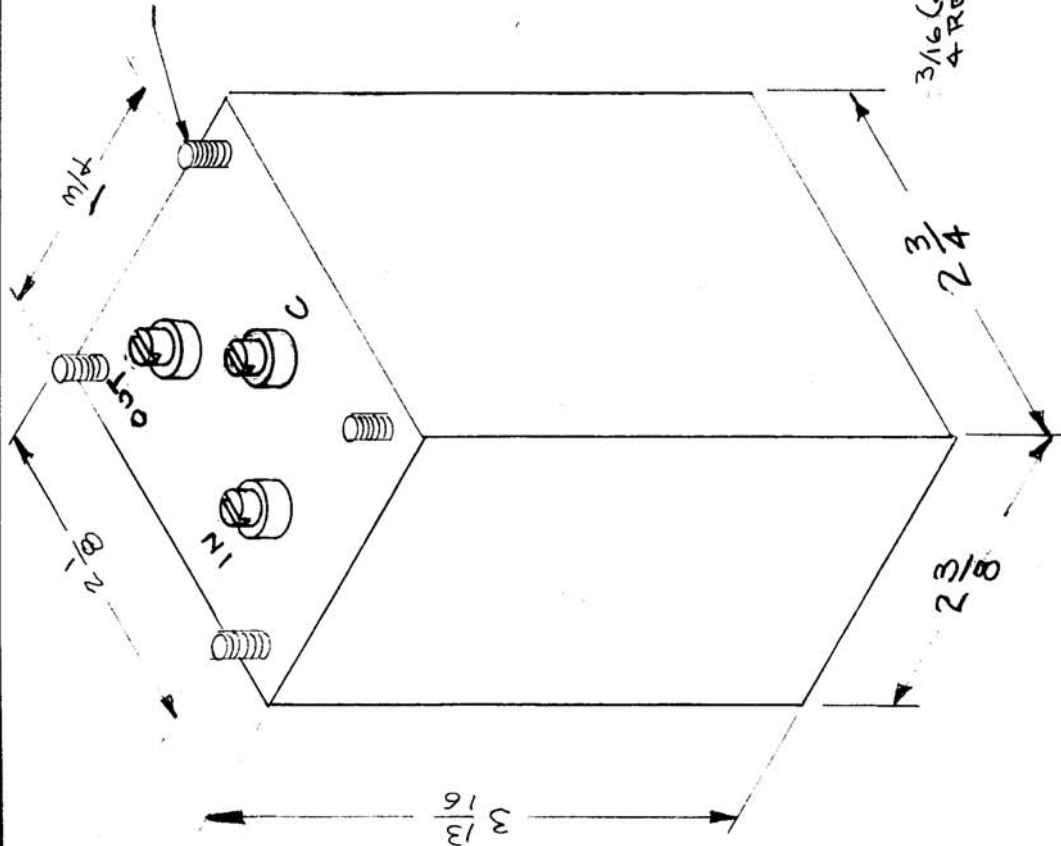


RE. PER UNIT	1	USED ON	FX-150
MODEL	GSB-1	ASSY. NO.	8-23-56
DATE	8-23-56		

6-32 X 3/8 STUDS



**MECHANICAL SPECIFICATIONS:**

Case - Steel  
 Studs - 6-32 x 3/8  
 Color - TNG Gray

**ELECTRICAL SPECIFICATIONS:**

**Band Pass:** Output must be flat within 6 db in the region - 17.30 Kc to 19.80 Kc.  
**Band Rejection:** Output must be down at least 40.0 db at 16.80 Kc and 20.30 Kc.  
**Insertion Loss:** Less than 3 db measured at the point of minimum loss within pass band.  
**Input-Output Nominal Impedances:** 20,000 ohms, unbalanced.

**DRILLING PLAN**

REQ. ITEM	C 1	16/58	3	16	10/57	19/24/56	DATE	CH. NO.	DRAFTS	CHECKER	ENG. APP.	SCALE:	4A-1335
PART NO.	C 1												
DESCRIPTION	BAND PASS FILTER												
SYMBOL	C												
THEORETICAL MATERIAL CORP.	THE TECHNICAL MATERIEL CORP. MAMARONECK. NEW YORK												
STOCK SIZE													
MATERIAL	STEEL												
HEAT TREAT. SPEC.													
FINISH & SPEC. NO.	A51												
MECH. DES. APP.	P.R.X												
MECH. DES. APP.	10/24/56												
MECH. DES. APP.	C.S.												
MECH. DES. APP.	A51												
MECH. DES. APP.	FINAL APPROVAL												
MECH. DES. APP.	FX-150												

**TOLERANCES**  
 DEC. DIM. ±  
 FRAC. DIM. ±  
 ANGULAR DIM. ±

MAXIMUM ALLOWABLE TOLERANCES HAVE BEEN DETERMINED AND ANY DEVIATIONS WILL BE CAUSE FOR REJECTION. REMOVE ALL BURRS AND SHARP EDGES