

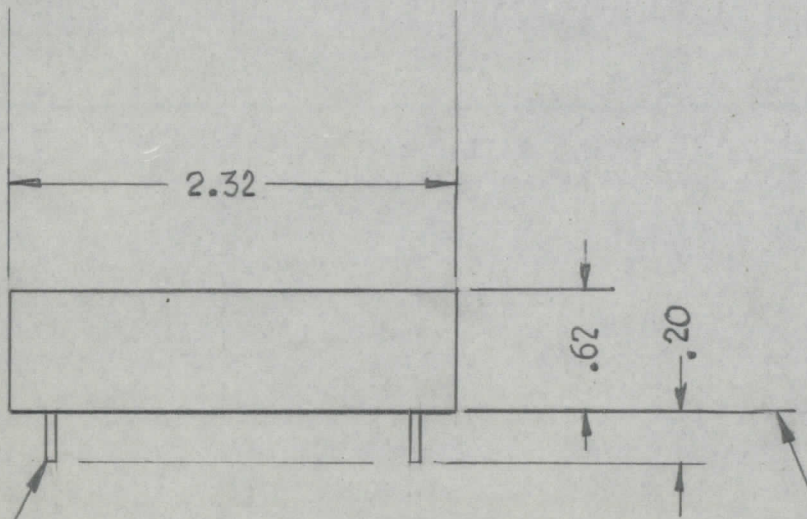
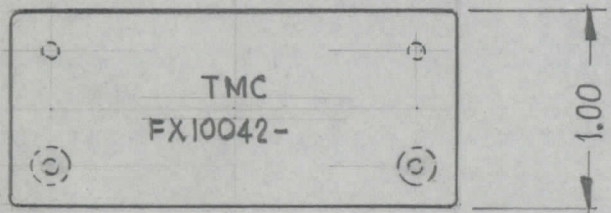
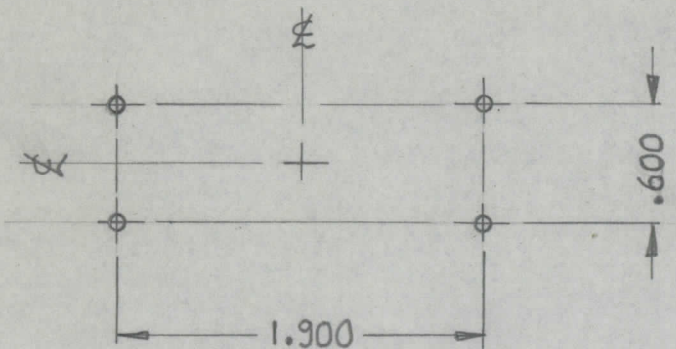
IF IT IS FOUND DESIRABLE TO CHANGE ANY TOLERANCE OR OTHER DETAIL SPECIFIED ON THIS DRAWING NOTIFY THE PURCHASER PROMPTLY.

MAXIMUM ALLOWABLE TOLERANCES HAVE BEEN DETERMINED AND DEVIATIONS WILL BE CAUSE FOR REJECTION REMOVE ALL BURRS AND SHARP EDGES

DIMENSIONS IN INCHES UNLESS OTHERWISE SPECIFIED

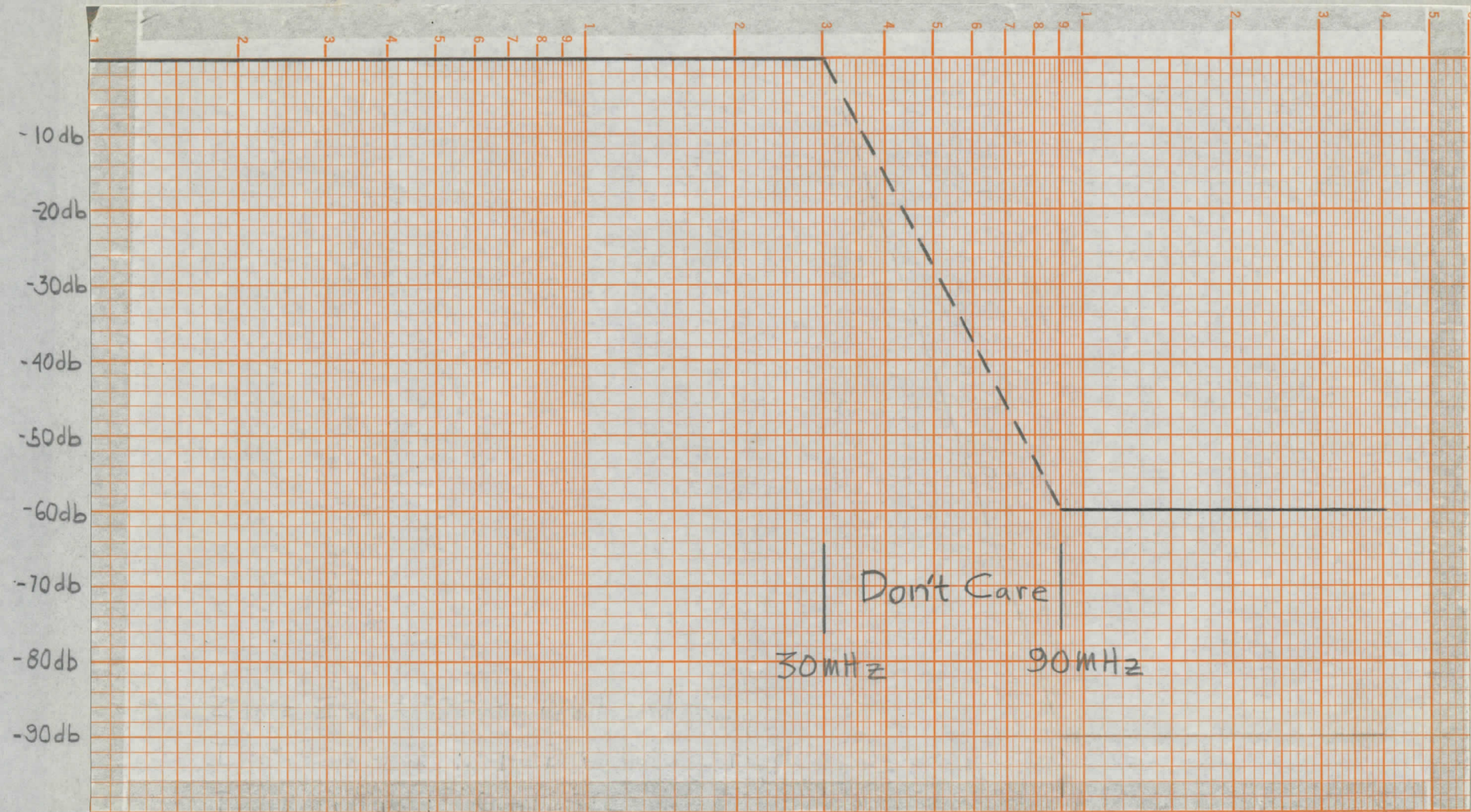
REQ	ITEM	PART NO	DESCRIPTION	SYMBOL
-----	------	---------	-------------	--------

ISSUE	ITEM	CHANGED FROM	DATE	CN NO	DRAFTS	CHECKER	ENG. APP.
0		PROD RELEASE	22 AUG 73		dm		



.403-.407 TERM. DIA.
4. REQD.

NO PART OF THE FILTER
BOTTOM SHOULD PROTRUDE
THRU THIS LINE EXCEPT TERM LEADS



Z_{IN} = Z_{OUT} = 50Ω UNBALANCED
INSERTION LOSS: 1db INCLUDING RIPPLE
TEMP. RANGE : 0° TO 125° C

MFR: FILTRAN INC.

TOLERANCES UNLESS OTHERWISE SPECIFIED	SCALE	DRILL, PUNCH, COMMERCIAL STOCK SIZES AND MANUFACTURERS TOLERANCES ARE NOT INCLUDED.
ALL OTHERS	1:1	
DEC. DIM. ± 1/64		
ANGULAR DIM. ± 0°30'		
.X = .05		
.XX = .01		
.XXX = .005		

REX-1	130/71	A11106-5	22 Aug 73
MODEL	PROJECT NO	ASSY NO.	DATE

STOCK SIZE		TMC (Canada) LIMITED OTTAWA ONTARIO	
MATERIAL		FILTER	
WEIGHT PER PC		30 MHz LOW PASS	
TYPE & TEMPER		dm	
HEAT TREAT SPEC		DRAWN	ELEC DES APP MECH. DES APP
FINISH & SPEC NO.		FINAL APPROVAL	
		FX10042 0	

USED ON