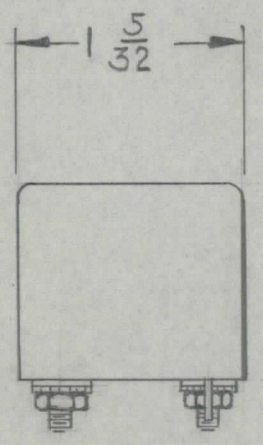
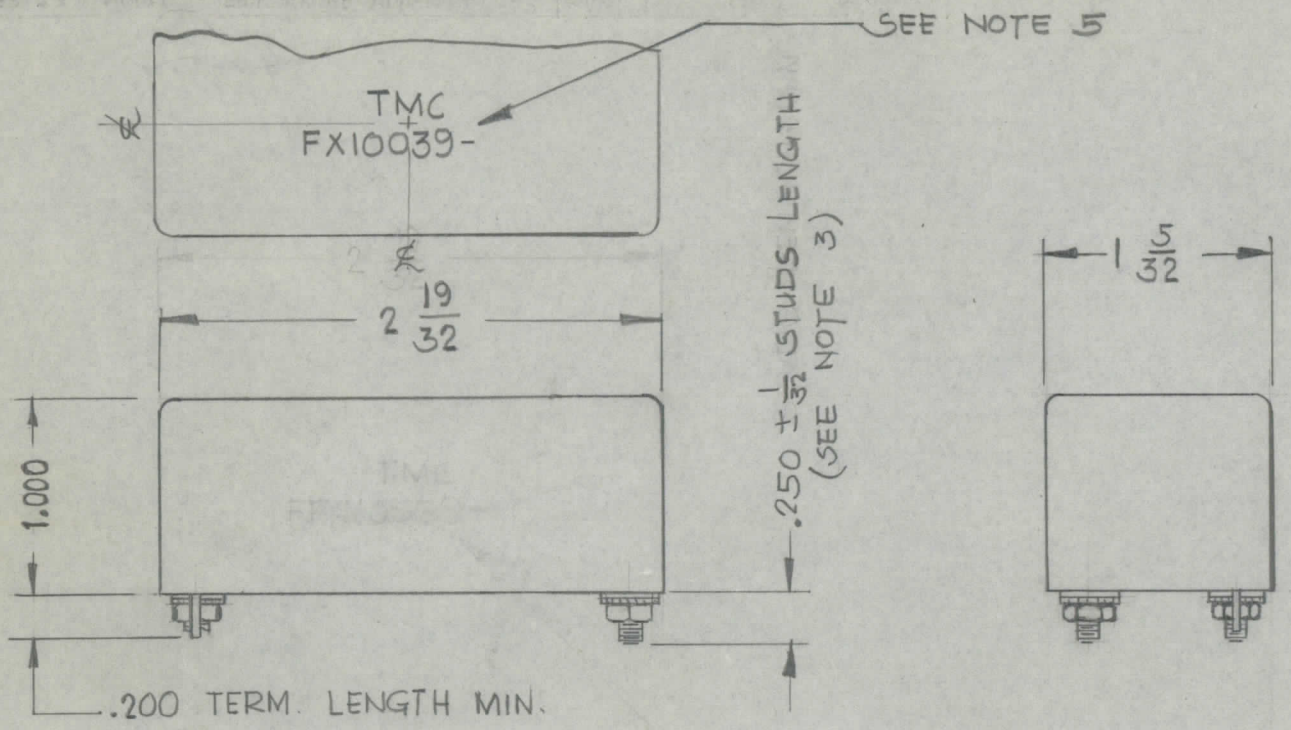


IF IT IS FOUND DESIRABLE TO CHANGE ANY TOLERANCE OR OTHER DETAIL SPECIFIED ON THIS DRAWING NOTIFY THE PURCHASER PROMPTLY.		DIMENSIONS IN INCHES UNLESS OTHERWISE SPECIFIED					
MAXIMUM ALLOWABLE TOLERANCES HAVE BEEN DETERMINED AND DEVIATIONS WILL BE CAUSE FOR REJECTION REMOVE ALL BURRS AND SHARP EDGES							
ISSUE	ITEM	CHANGED FROM	DATE	CN NO	DRAFTS	CHECKER	ENG. APP.
Ø		PROD RELEASE	16 JUNE 73		JJM	SOW	SOW

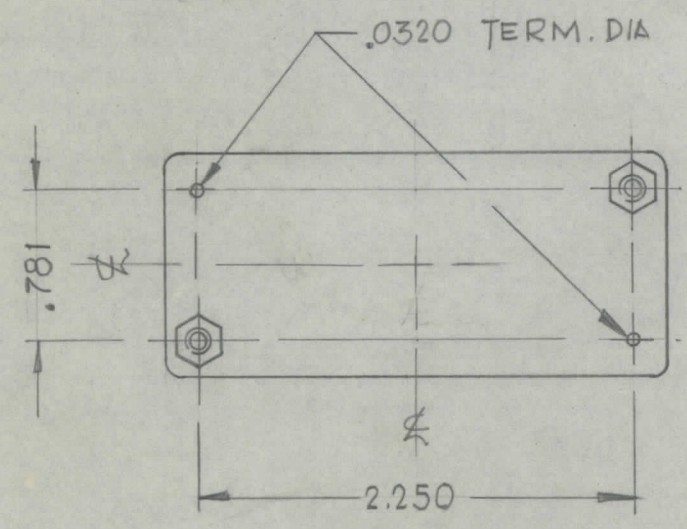
REQ	ITEM	PART NO.	DESCRIPTION	SYMBOL
-----	------	----------	-------------	--------

FX10039-Ø



FILTER SPECIFICATIONS:

Z_{IN} : Z_{OUT} = 50 Ω
 FREQUENCY : 8.000 MHz
 INSERTION LOSS : 3 db MAX
 PASSBAND RIPPLE : 2 db
 CARRIER SUPPRESSION : 15 db
 TEMPERATURE RANGE : 0° TO 70° C



TMC PT. NO.

FX10039-1 LOWER SIDEBAND
 FX10039-2 UPPER SIDEBAND

NOTES:

1. FILTER COULD BE PURCHASED FROM G.R. SNELGROVE CO. LTD.
2. DIMENSIONS GIVEN ARE MAX. EXCEPT NOTED.
3. STUDS TO BE EQUIPPED WITH FLAT WASHERS, LOCKWASHERS & HEX NUTS.
4. INPUT & OUTPUT TERMINALS ARE REVERSIBLE.
5. RUBBER STAMP TMC PART NO. AS REQ'D WITH LATEST REVISION LETTER.

NOTES CONT. -

6. FX10039-1 IS LOWER SIDEBAND AT OUTPUT OF EXCITER, THE FILTER IS ACTUALLY USB.
7. FX10039-2 IS UPPER SIDEBAND AT OUTPUT OF EXCITER, THE FILTER IS ACTUALLY LSB.

STOCK SIZE		TMC (Canada) LIMITED OTTAWA ONTARIO	
SEE NOTE 1		FILTER	
MATERIAL	WEIGHT PER PC		
TYPE & TEMPER		JJM	SOW
		DRAWN	ELEC DES. APP.
HEAT TREAT SPEC		S.WITTEN	
		CHECKED	FINAL APPROVAL
FINISH & SPEC. NO.		FX10039-Ø	

TOLERANCES UNLESS OTHERWISE SPECIFIED		SCALE: 1:1
ALL OTHERS	DEC DIM. = 1/64 FRAC. DIM. = 1/64 ANGULAR DIM. = 0°30'	DRILL, PUNCH, COMMERCIAL STOCK SIZES AND MANUFACTURERS TOLERANCES ARE NOT INCLUDED

REX-1	130/71	A11105-5	15 JUNE 73
MODEL	PROJECT NO	ASSY NO.	DATE

USED ON