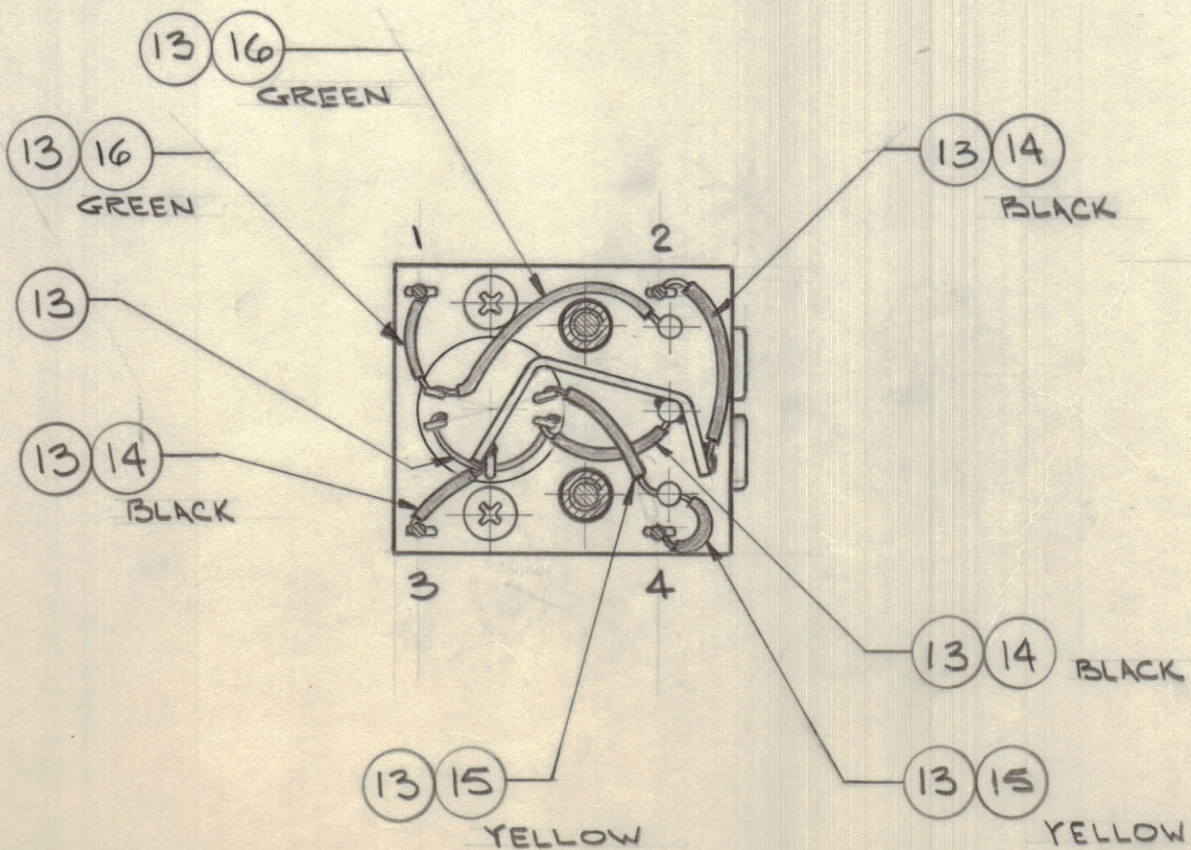
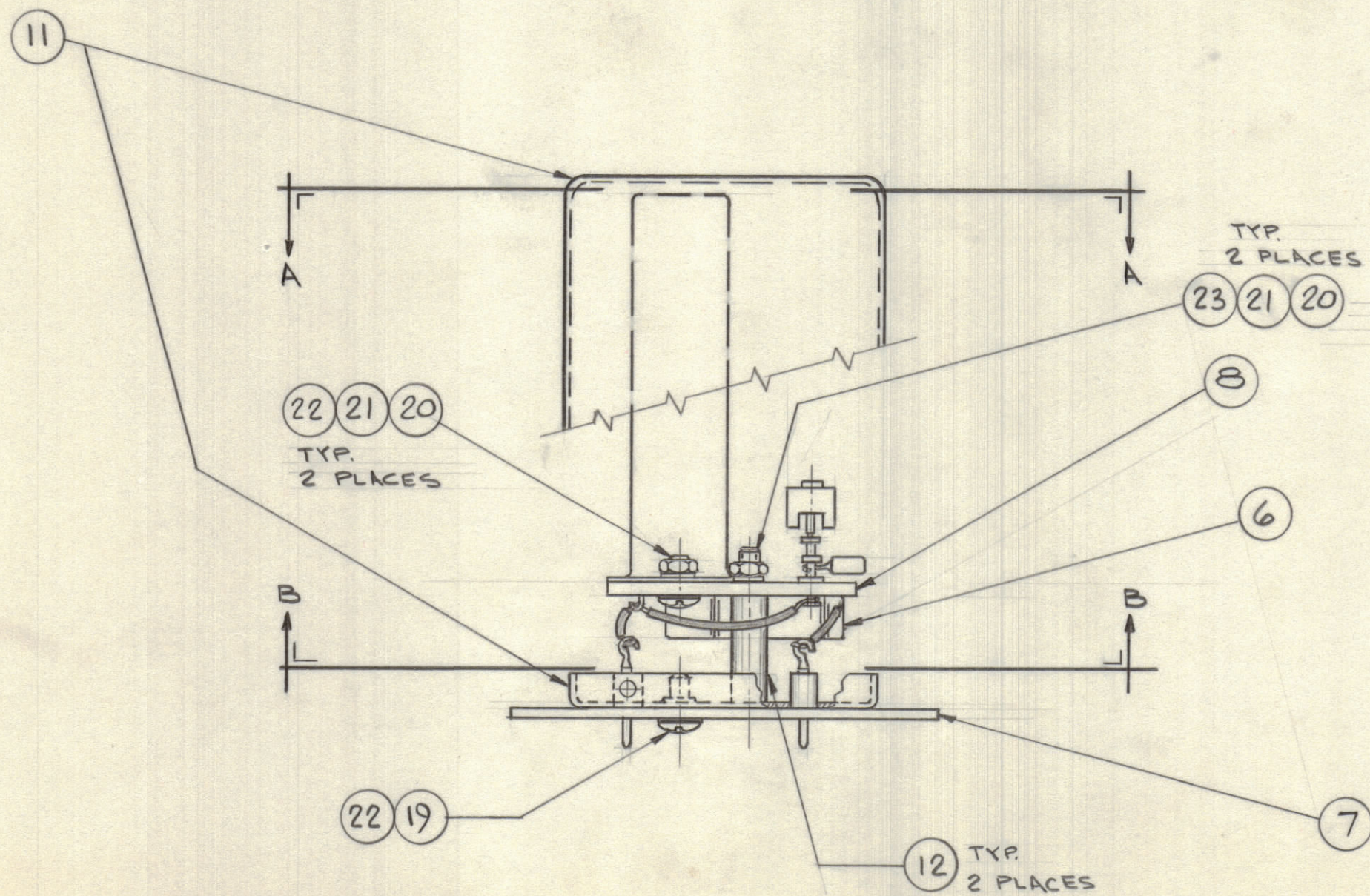
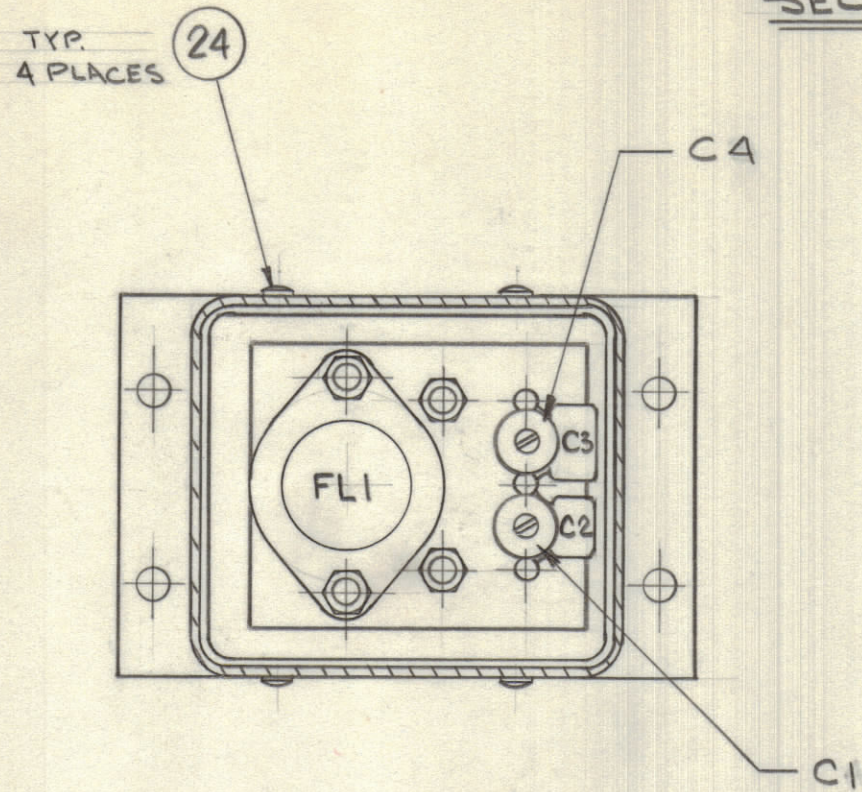


IF IT IS FOUND DESIRABLE TO CHANGE ANY TOLERANCE OR OTHER DETAIL SPECIFIED ON THIS DRAWING NOTIFY THE PURCHASER PROMPTLY.				DIMENSIONS IN INCHES UNLESS OTHERWISE SPECIFIED			
MAXIMUM ALLOWABLE TOLERANCES HAVE BEEN DETERMINED AND DEVIATIONS WILL BE CAUSE FOR REJECTION. REMOVE ALL BURRS AND SHARP EDGES.							
ISSUE	ITEM	CHANGED FROM	DATE	CN. NO.	DRAFTS	CHECKER	ENG. APP.
X		ENG. RELEASE	14 DEC 1971		PL		

**SECTION A-A**



REQ.	ITEM	PART NO.	DESCRIPTION	USED ON	REMARKS
2	1	CM11E680J15	CAP, FXD, MICA	FX10037	C2, C3
2	2	CV112-5	CAP, VAR, MIN. DISC CER.	FX10037	C1, C4
1	3	FX10038	FILTER, MECH.	FX10037	FL1
1	4	MS-202-1-2	LEAD, CONN.		
	5				
1	6	MS-202-1-2	LEAD, CONN.	FX10037	
1	7	MS-3395	PLATE, FILTER	FX10037	
1	8	PF10120	BOARD, TERMINAL	FX10037	
	9				
	10				
1	11	BX213	CASE & COVER	FX10037	
2	12	TE117-4	SPACER		
X	13	WL100-6	WIRE, BUSS		
X	14	PX104-1-034	SLEEVING, INSUL.		
X	15	PX104-2-034	SLEEVING, INSUL.		
X	16	PX104-4-034	SLEEVING, INSUL.	FX10037	
	17				
	18				
1	19	LWE06MSS	WASHER, LOCK, TOOTH	FX10037	
4	20	LWS06MSS	WASHER, LOCK, SPRING		
4	21	NTH0632SS8	NUT, HEX.		
3	22	SCBP0632SS4	SCREW, PAN HD.		
2	23	SCBP0632SS18	SCREW, PAN HD.		
4	24	SFB0256AW	SCREW, THREAD CUTTING	FX10037	
	25				
	26	CK10839	SCHEMATIC		REF

FX10037 X

TOLERANCES		SCALE: 1:1
ALL OTHERS	DEC. DIM. ± 1/64 FRAC. DIM. ± 1/64 ANGULAR DIM. ± 0° 30'	.X = .08 .XX = .01 .XXX = .005
DRILL, PUNCH, COMMERCIAL STOCK SIZES AND MANUFACTURERS TOLERANCES ARE NOT INCLUDED.		

GPR-92			14 DEC. 71
MODEL	PROJECT NO.	ASSY. NO.	DATE

TMC (Canada) LIMITED OTTAWA ONTARIO			
BANDPASS FILTER ASSEMBLY			
TYPE & TEMPER	P. LINDSAY	ELEC. DES. APP.	MECH. DES. APP.
HEAT TREAT. SPEC.	PROCTOR	CHECKED	FINAL APPROVAL
FINISH & SPEC. NO.			FX10037 X