

IF IT IS FOUND DESIRABLE TO CHANGE ANY TOLERANCE OR OTHER DETAIL SPECIFIED ON THIS DRAWING NOTIFY THE PURCHASER PROMPTLY.

MAXIMUM ALLOWABLE TOLERANCES HAVE BEEN DETERMINED AND DEVIATIONS WILL BE CAUSE FOR REJECTION. REMOVE ALL BURRS AND SHARP EDGES

FX10011

STANDARD DRAWING

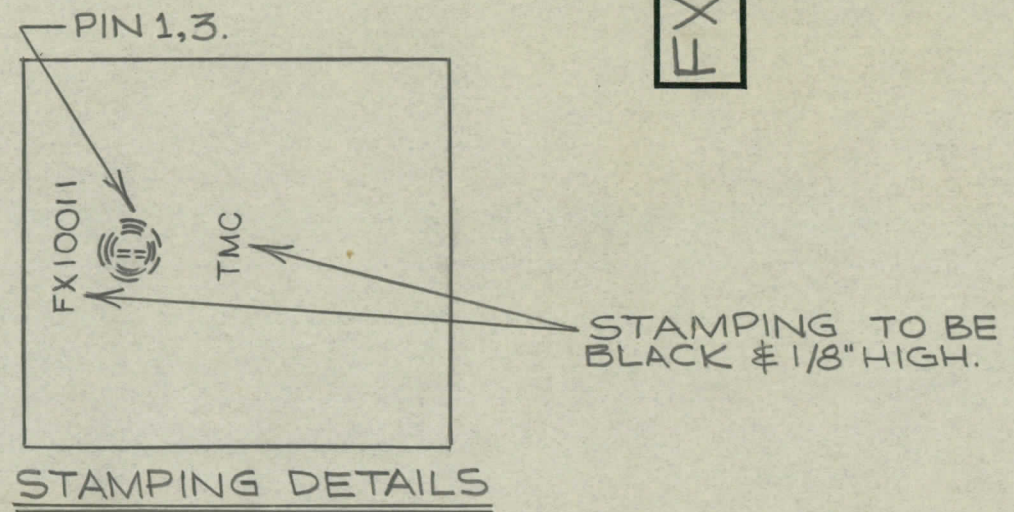
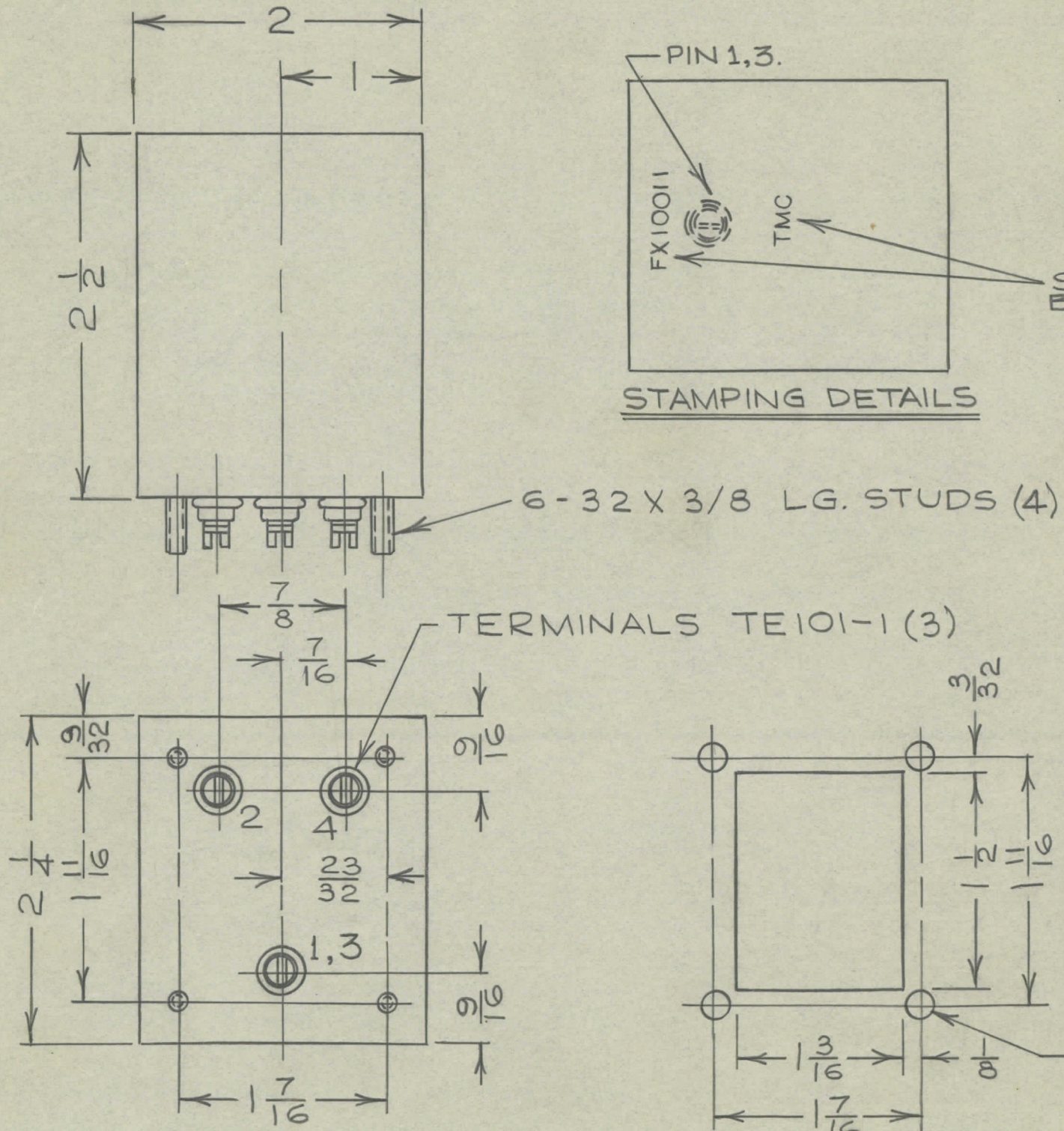
FX10011

ELECTRICAL SPECIFICATIONS

INPUT: TERMINAL 4: 70 OHMS.
UNBALANCED.
OUTPUT: TERMINAL 2: 70 OHMS.
UNBALANCED.
GROUND: TERMINALS 1 & 3.

MECHANICAL SPECIFICATIONS

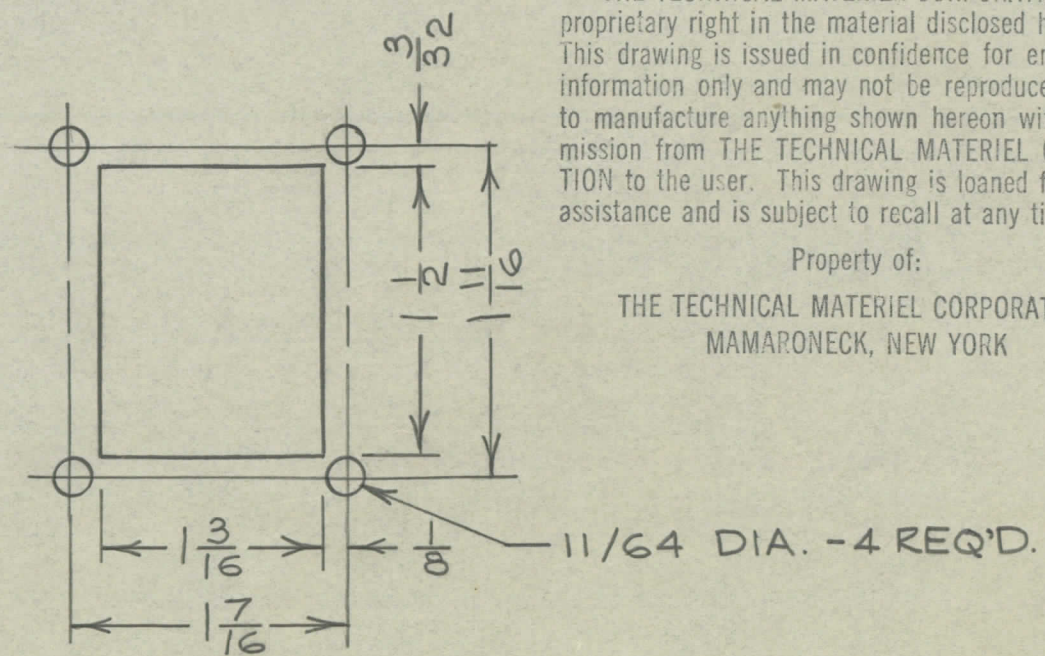
LENGTH: 2 - 1/4".
WIDTH: 2"
HEIGHT: 2 - 1/2" (EXCLUDING TERMINALS)
TERMINALS: 3 CERAMIC TURRETS
TYPE: 3/8" HIGH.
MOUNTING: (4) 6-32 X 3/8" STUDS.



NOTICE TO PERSONS RECEIVING THIS DRAWING

THE TECHNICAL MATERIEL CORPORATION claims proprietary right in the material disclosed hereon. This drawing is issued in confidence for engineering information only and may not be reproduced or used to manufacture anything shown hereon without permission from THE TECHNICAL MATERIEL CORPORATION to the user. This drawing is loaned for mutual assistance and is subject to recall at any time.

Property of:
THE TECHNICAL MATERIEL CORPORATION
MAMARONECK, NEW YORK



ISSUE	ITEM	CHANGED FROM	DATE	CN. NO.	DRAFTS	CHECKER	ENG. APP.
TOLERANCES							
SCALE:							
DRILL, PUNCH, COMMERCIAL STOCK SIZES AND MANUFACTURERS TOLERANCES ARE NOT INCLUDED.							
ALL OTHERS							

DA-101	CE 5107	3/27/61
MODEL	PROJECT NO.	ASS'Y. NO.
USED ON		

REQ.	ITEM	PART NO.	DESCRIPTION	SYMBOL
			TMC (Canada) LIMITED OTTAWA ONTARIO	
			FILTER, LOW PASS	
			JPC	
			DRAWN	ELEC. DES. APP. MECH. DES. APP.
			CHECKED	FINAL APPROVAL
				FX10011
			FINISH & SPEC. NO.	