

# STANDARD DRAWING

IF IT IS FOUND DESIRABLE TO CHANGE ANY TOLERANCE OR OTHER DETAIL SPECIFIED ON THIS DRAWING NOTIFY THE PURCHASER PROMPTLY.

MAXIMUM ALLOWABLE TOLERANCES HAVE BEEN DETERMINED AND DEVIATIONS WILL BE CAUSE FOR REJECTION. REMOVE ALL BURRS AND SHARP EDGES

FX10007

USED ON

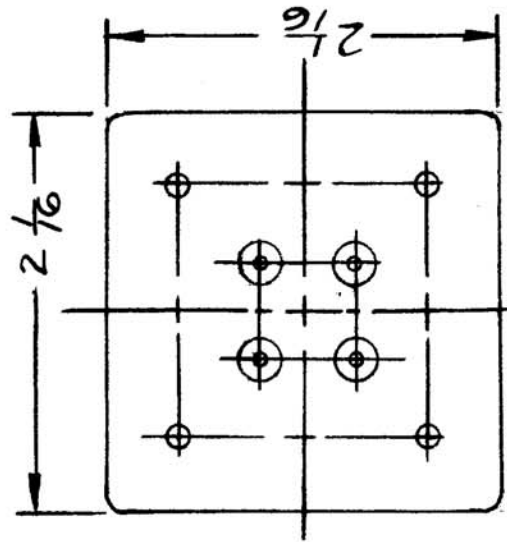
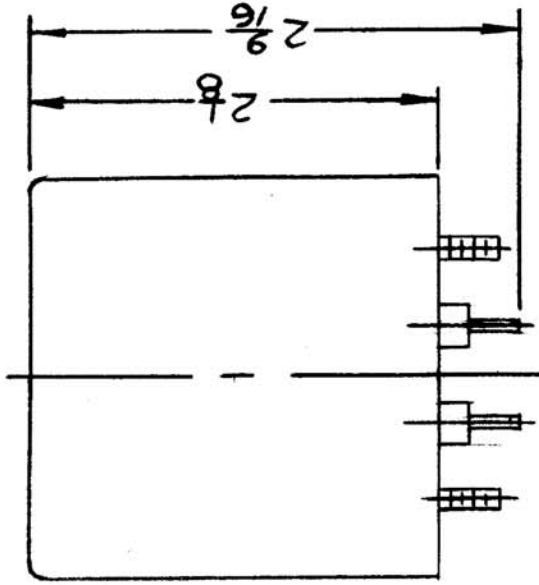
DATE

ASS'Y. NO.

PROJECT NO.

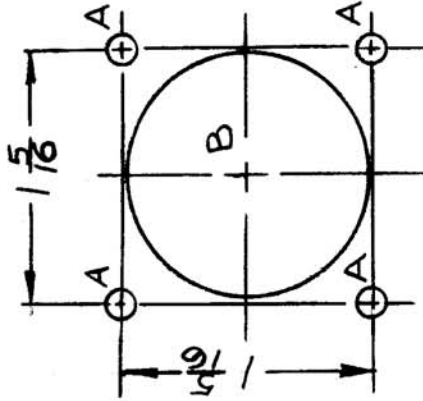
MODEL

AUG. 12/59



ASSY MOUNTING

FREQ: 1 TO 10 KC  
IMP: 600 OHMS  
BEL: 2432



HOLE A = 11/64 DIA.  
HOLE B = 1 1/4 DIA.

REF: BAYLY BEL-2432

| REQ. ITEM | PART NO. | DESCRIPTION                            | SYMBOL                             |
|-----------|----------|--|------------------------------------|
|           |          | TMC (Canada) LIMITED<br>OTTAWA ONTARIO |                                    |
|           |          | FILTER                                 |                                    |
|           |          | PRE-EMPHASIS NETWORK                   |                                    |
|           |          | JPC                                    |                                    |
|           |          | DRAWN <i>ALM</i>                       | ELEC. DES. APP. <i>1802</i>        |
|           |          | CHECKED                                | MECH. DES. APP. <i>h. l. b. r.</i> |
|           |          | TYPE & TEMPER                          | FINAL APPROVAL                     |
|           |          | HEAT TREAT. SPEC.                      |                                    |
|           |          | FINISH & SPEC. NO.                     | FX10007                            |

| ISSUE ITEM  | CHANGED FROM      | DATE | CN. NO. | DRAFTS CHECKER | ENG. APP. |
|---|-------------------|------|---------|----------------|-----------|
|   |                   |      |         |                |           |
| TOLERANCES  |                   |      |         |                |           |
| SCALE 1:1   |                   |      |         |                |           |
| DRILL, PUNCH, COMMERCIAL STOCK SIZES AND MANUFACTURERS TOLERANCES ARE NOT INCLUDED. |                   |      |         |                |           |
| ALL OTHERS  | DEC. DIM. ±       |      |         |                |           |
|   | FRAC. DIM. ± 1/64 |      |         |                |           |
|   | ANGULAR DIM. ±    |      |         |                |           |