

IF IT IS FOUND DESIRABLE TO CHANGE ANY TOLERANCE OR OTHER DETAIL SPECIFIED ON THIS DRAWING NOTIFY THE PURCHASER PROMPTLY.

STANDARD DRAWING

FW- - - - H

MAXIMUM ALLOWABLE TOLERANCES HAVE BEEN DETERMINED AND DEVIATIONS WILL BE CAUSE FOR REJECTION. REMOVE ALL BURRS AND SHARP EDGES

USED ON
MODEL PROJECT NO. ASSY. NO. DATE

SCREEN OR BOLT SIZE	SIZE CODE	DIMENSIONS	
		O.D.	MM
1	01	3/16	.020
2	02	3/16	.020
3	03	1/4	.020
4	04	9/32	.025
5	05		
6	06	5/16	.028
8	08	3/8	.032
10	10	7/16	.036
12	12	1/2	.040
1/4	25	9/16	.040
5/16	31	3/4	.064
3/8	37	7/8	.064
7/16	43	1 1/8	.081
1/2	50	1 1/4	.091
5/8	62	1 1/2	.102

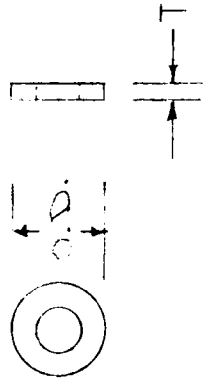
3ST ONLY O.D.
1/4

SERIES

H-STANDARD

MATERIAL

- B- BRASS *
- R- BRONZE
- S- STEEL
- S- STAINLESS STEEL
- N- NAVAL BRONZE (For Special Applications Only)
- FINISH
- G- CADMIUM
- N- NICKEL, BRIGHT *
- S- PASSIVATE, STAINLESS ONLY.
- B- BLACK NICKEL
- R- NO FINISH
- P- SILVER PLATE (FOR SPECIAL APPLICATIONS ONLY)



* STANDARD FINISH

WASHER, SCREEN OR SERIES MAT. FINISH
FLAY BOLT SIZE

FW 05 H B N

ISSUE	ITEM	CHANGED FROM	DATE	CN. NO	DRAFTS	CHECKER	ENG. APP.
H							
G	1	BOLT SIZE 1 COLUMN, APPROX 5-13-39	5-13-39	1398	CVL	JL	
F	1	SEE EMN 10849	2-5-64	10849	A.M.	TR	
E	1	SIZE (3) HEAVY, DR WAS .875, TMS. 042	4-16-63	8759	SW	SW	
D	1	SIZE (4) HEAVY T WAS .031	2-9-63	8237	SW	SW	
		SIZE (4) LIGHT SERIES DELETED					

TOLERANCES

DEC. DIM. ±
FRAC. DIM. ±
ANGULAR DIM. ±

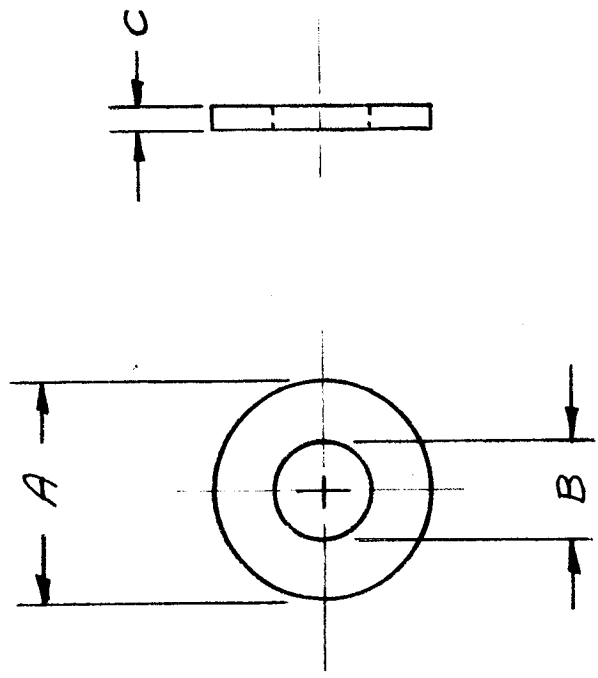
DRILL, PUNCH, COMMERCIAL STOCK SIZES AND MANUFACTURERS TOLERANCES ARE NOT INCLUDED.

REQ. ITEM	PART NO.	DESCRIPTION	SYMBOL
		THE TECHNICAL MATERIEL CORP. MAMARONECK, NEW YORK	
		WASHER, FLAT	
		CD.D. 6-24-54	
		DRAWN	
		ELEC. DES. APP.	
		CHECKED	
		MECH. DES. APP.	
		FINAL APPROVAL	
		FINISH & SPEC. NO.	

STANDARD DRAWING

USED ON		FW-101	
MODEL	ASSY. NO.	DATE	
STANDARD		2-6-62	

TMC PART NO.	MFR'S PART NO.	A	B	C	USE WITH SCREW SIZE	REQ. PER UNIT
FW 101-1	972402(6)	5/16	.140	3/64	6	
FW 101-2	972701	9/16	.260	1/16	1/4	
FW 101-3	972301	.281	.115	.047	4	
FW 101-4	972501	.375	.170	.062	8	
FW 101-5	972601	.437	.200	.062	10	



STANDARD DRAWING

REQ. ITEM	PART NO.	DESCRIPTION	SYMBOL
	ANGER	THE TECHNICAL MATERIEL CORP. MAMARONECK, NEW YORK	
		WASHER, FLAT, NYLON	
		NYLON	
		MATERIAL	
		TYPE & TEMPER	DRAWN
		HEAT TREAT. SPEC.	CHECKED
		FINISH & SPEC. NO.	FINAL APPROVAL
			FW-101
			D

ON CHART: IT (2), MFG P/N WAS #1/4" ITS, 3, 4 & 5 ADD. DEC, ±.500 TOL. DELE.	12-11-64	13105	92	@		
C DWIG CLARIFIED	10/17/63	10221	AD	MP		
B ADDED CODE # 9401-180 ON FW-101-1 DIMS WAS 5/16" & 3/8" MFR'S PART NO WAS TMC CODE NO"	7-26-63	9667	AC	SW		
	7-3-63	9447	Ⓢ	M.P.		
SYM	DESCRIPTION	DATE	CH. NO.	DRAFTS	CHECKER	ENG. APP.
			SCALE: 5401-180			
UNLESS OTHERWISE SPECIFIED: DIMENSIONS ARE IN INCHES TOLERANCES ON FRAC. ± 1/64 DEC. ± ANGLES ± 1/2°						
MAXIMUM ALLOWABLE TOLERANCES HAVE BEEN DETERMINED AND ANY DEVIATIONS WILL BE CAUSE FOR REJECTION. REMOVE ALL BURRS AND SHARP EDGES						