

STANDARD DRAWING

IF IT IS FOUND DESIRABLE TO CHANGE ANY TOLERANCE OR OTHER DETAIL SPECIFIED ON THIS DRAWING NOTIFY THE PURCHASER PROMPTLY.

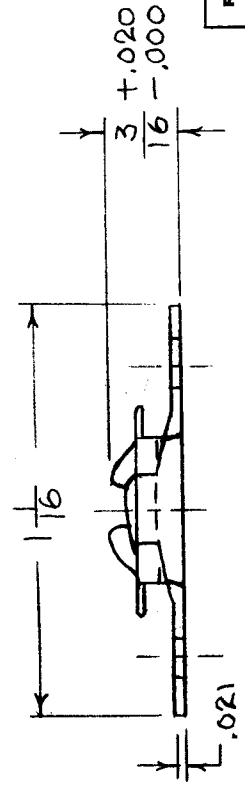
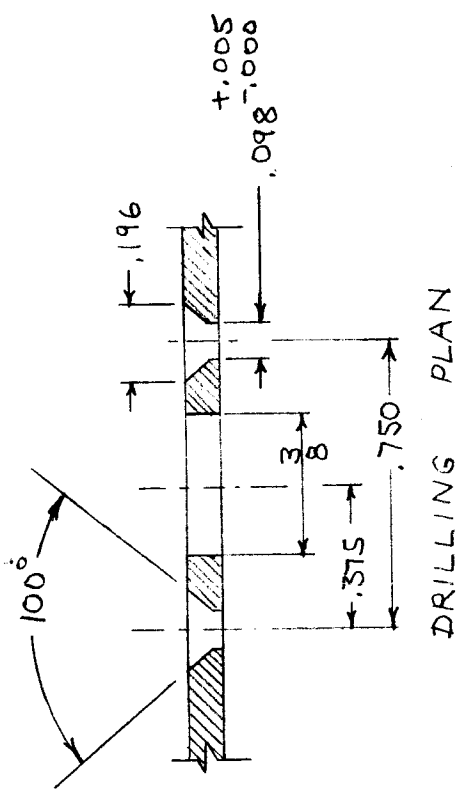
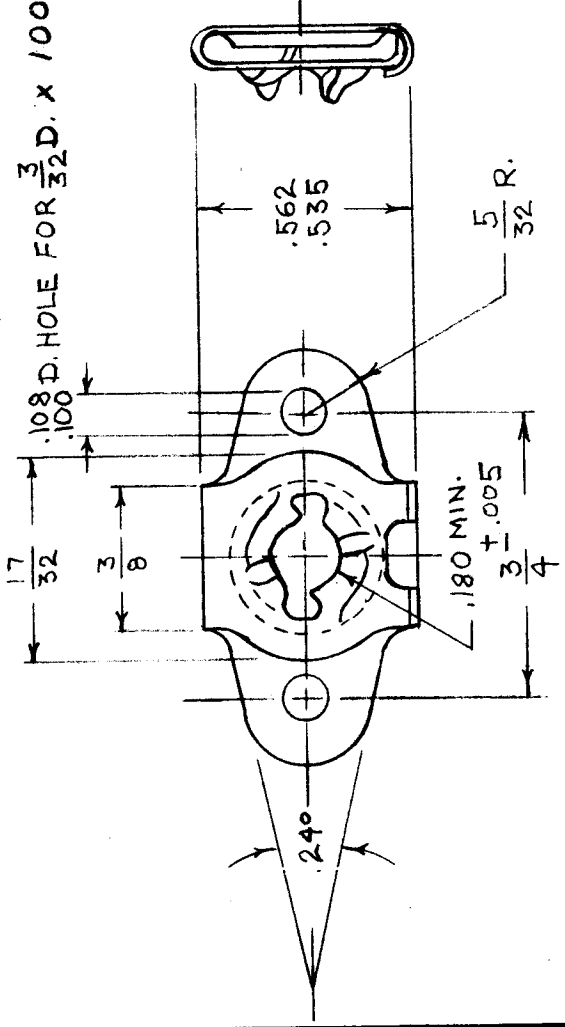
MAXIMUM ALLOWABLE TOLERANCES HAVE BEEN DETERMINED AND DEVIATIONS WILL BE CAUSE FOR REJECTION. REMOVE ALL BURRS AND SHARP EDGES

FS-100

USED ON

MODEL PROJECT NO. ASSY. NO. DATE

100° CT SK RIVET

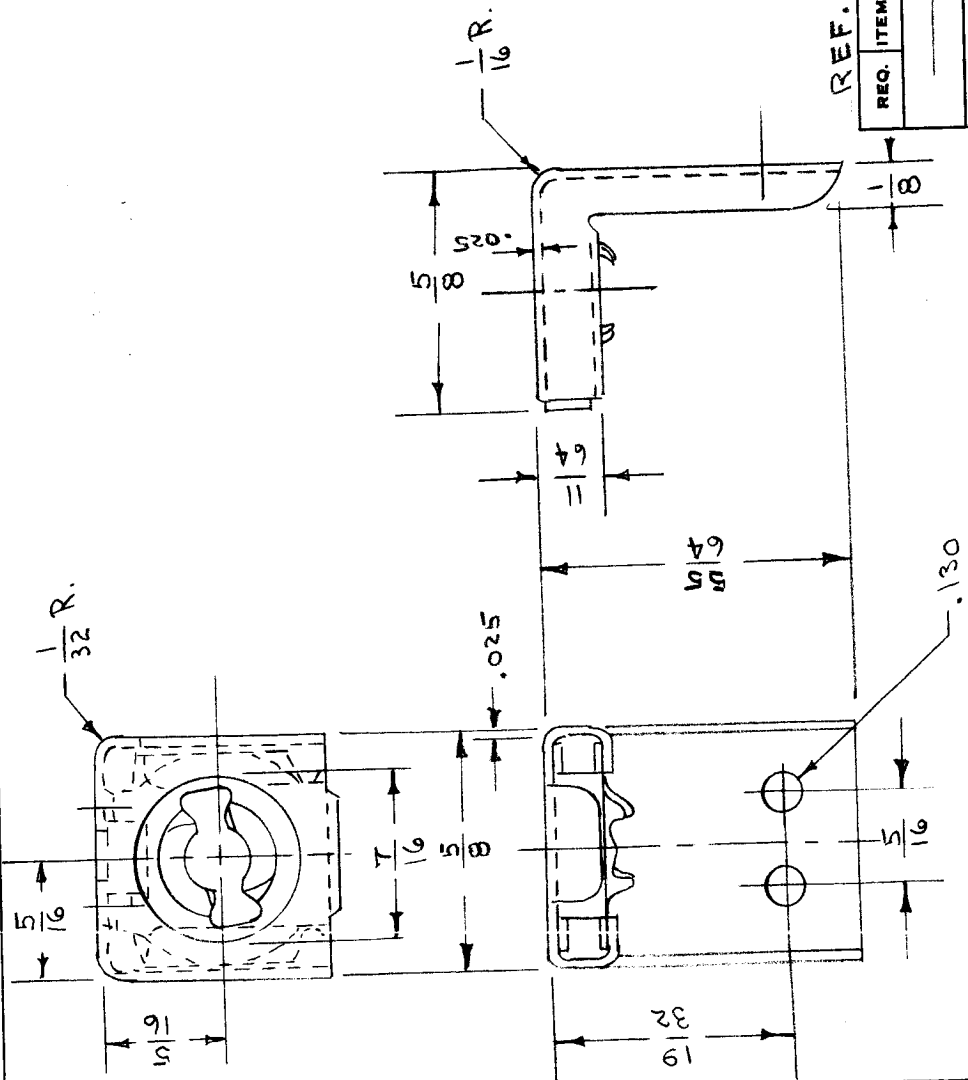


REF: SHAKEPROOF CO. # 98-2-MSP

REQ. ITEM	PART NO.	DESCRIPTION	SYMBOL
— # —		THE TECHNICAL MATERIEL CORP. MAMARONECK, NEW YORK	
STOCK SIZE		— # —	
SPRING STEEL		SPRING UNIT	
MATERIAL			
WEIGHT PER PC.			
TYPE & TEMPER			
HEAT TREAT. SPEC.			
ISSUE ITEM	CHANGED FROM	DATE	CN. NO. DRAFTS
			CHECKER
			ENG. APP.
TOLERANCES			
DEC. DIM. ± .005			
FRAC. DIM. ± 1/64			
ANGULAR DIM. ±			
SCALE			
DRILL, PUNCH, COMMERCIAL STOCK SIZES AND MANUFACTURERS TOLERANCES ARE NOT INCLUDED.			
DRAWN	WDC 9/15/52	G.T.O	MECH. DES. 9/15/52
CHECKED			
FINAL APPROVAL		FS-100	

IF IT IS FOUND DESIRABLE TO CHANGE ANY TOLERANCE OR OTHER DETAIL SPECIFIED ON THIS DRAWING NOTIFY THE PURCHASER PROMPTLY.

MAXIMUM ALLOWABLE TOLERANCES HAVE BEEN DETERMINED AND DEVIATIONS WILL BE CAUSE FOR REJECTION. REMOVE ALL BURRS AND SHARP EDGES



DIMENSIONS FOR REF. ONLY

REF.: SHAKEROOF INC. SP-2-AB-54

STANDARD DRAWING

FS-101

USED ON

MODEL	PROJECT NO.	ASSY. NO.	DATE
-------	-------------	-----------	------

REQ. ITEM	PART NO.	DESCRIPTION	SYMBOL
STEEL	#	THE TECHNICAL MATERIEL CORP. MAMARONECK, NEW YORK	
MATERIAL	WEIGHT PER PC.	BRACKET, ANGLE	
TYPE & TEMPER		C.D.D. 10/13/52	MECH. DES. APP. <i>Page</i>
HEAT TREAT. SPEC.		HAD 11/13/52	ELEC. DES. APP.
			CHECKED
			FINAL APPROVAL
			FS-101

ISSUE ITEM	CHANGED FROM	DATE	CN. NO.	DRAFTS	CHECKER	ENG. APP.
TOLERANCES						
SCALE TWICE SIZE						
DRILL, PUNCH, COMMERCIAL STOCK SIZES AND MANUFACTURERS TOLERANCES ARE NOT INCLUDED.						
ALL DEC. DIM. ± .005						
OTHERS FRAC. DIM. ± 1/64						
ANGULAR DIM. ±						

STANDARD DRAWING

FS-10

IF IT IS FOUND DESIRABLE TO CHANGE ANY TOLERANCE OR OTHER DETAIL SPECIFIED ON THIS DRAWING NOTIFY THE PURCHASER PROMPTLY.

MAXIMUM ALLOWABLE TOLERANCES HAVE BEEN DETERMINED AND DEVIATIONS WILL BE CAUSE FOR REJECTION. REMOVE ALL BURRS AND SHARP EDGES

STANDARD DRAWING

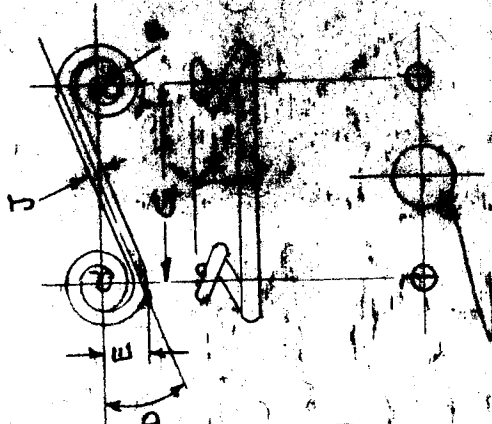
USED ON

ASSY. NO.

PROJECT NO.

MODEL

TMC. NO.	CAT. NO.	D	E	F	G	H	J	FOR USE WITH FASTENER TYPE	CLEARANCE HOLE SIZE
FS-102-1	SA-200	28°	13/64	3/32	3/4	.200	.062	A4-AJ4	3/8
FS-102-2	SA-225	28°	13/64	3/32	3/4	.225	.062	A4-AJ4	3/8
-3	SS-200	30°	9/32	1/8	1	.200	.080	A5-AJ5	1/2
-4	SS-225	30°	9/32	1/8	1	.225	.080	A5-AJ5	1/2



CLEARANCE HOLE SIZE

DIMENSIONS FOR REFERENCE

REQ. ITEM	PART NO.	DESCRIPTION
		TECHNICAL MATERIAL COMPANY MAMARONECK, NEW YORK
		MUSIC WIRE
		STOCK SIZE
		MATERIAL
		WEIGHT PER FC.
		TYPE & TEMPER
		CHECKED
		DRAWN
		ELEC. DES. APP.
		C.D.D. 10-18-SV
		DATE 10/20
		FINAL APP.
		FS-10

SPRING, TYPE 3

ISSUE ITEM	CHANGED FROM	DATE	CN. NO.	DRAFTS CHECKER	ENG. APP.
B 2	-3 + -4 ADDED	12-31-68			
A 1	FS-102-2 ADDED	7/5/57	1		
TOLERANCES		SCALE			
DEC. DIM. ± .005		DRILL, PUNCH, COMMERCIAL STOCK SIZES AND MANUFACTURERS TOLERANCES ARE NOT INCLUDED.			
ALL OTHERS		FRAC. DIM. ± 1/64			
		ANGULAR DIM. ±			

STANDARD DRAWING

FS-103 B

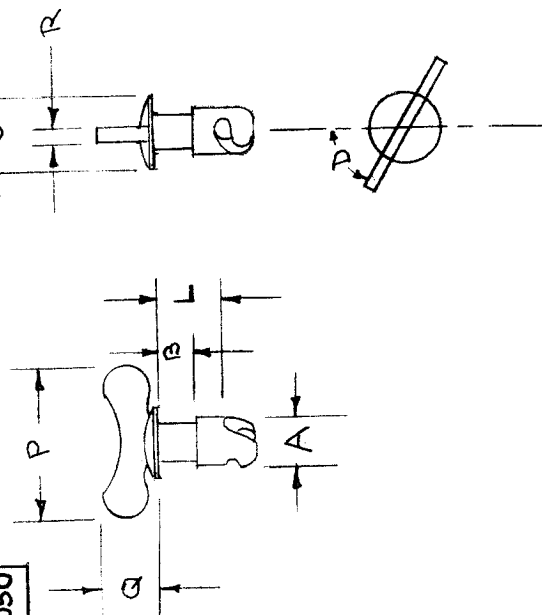
IF IT IS FOUND DESIRABLE TO CHANGE ANY TOLERANCE OR OTHER DETAIL SPECIFIED ON THIS DRAWING NOTIFY THE PURCHASER PROMPTLY.

MAXIMUM ALLOWABLE TOLERANCES HAVE BEEN DETERMINED AND DEVIATIONS WILL BE CAUSE FOR REJECTION. REMOVE ALL BURRS AND SHARP EDGES

USED ON

MODEL	PROJECT NO.	ASSY. NO.	DATE
XFK			

TMC NO.	CAT. NO	A	B	C	D	L	P	Q	R
FS-103-1	AJWA-40	1/4	.200	7/16	28°	.400	7/8	5/16	.050
FS-103-2	AJWA-45	1/4	.225	7/16	28°	.450	7/8	5/16	.050
FS-103-3	AJWA-30	1/4	.100	7/16	28°	.300	7/8	5/16	.050
FS-103-4	AJWA-35	1/4	.150	7/16	28°	.350	7/8	5/16	.050
FS-103-5	AJWA-50	1/4	.250	7/16	28°	.500	7/8	5/16	.050



DIMENSIONS FOR REFERENCE ONLY.

REF. OZUS FASTENER CO.

REQ. ITEM	PART NO.	DESCRIPTION	SYMBOL
#		THE TECHNICAL MATERIEL CORP. MAMARONECK, NEW YORK	
STEEL	#	STUD, TURNLOCK - WING	
MATERIAL	WEIGHT PER PC.		
#			
TYPE & TEMPER			
#			
HEAT TREAT. SPEC.			
S-105 CADMIUM PLATE			
FINISH & SPEC. NO.			

ISSUE ITEM	CHANGED FROM	DATE	CN. NO.	DRAFTS	CHECKER	ENG. APP.
B 2	TITLE WAS FASTENER, WING TP. FS103-5 ADDED	11.17.64	12934	108	[Signature]	[Signature]
A 1	Added - 3 & 4	9/24/59	-	16	[Signature]	[Signature]

SCALE	TOLERANCES
#	#

DEC. DIM. ±	DRILL, PUNCH, COMMERCIAL STOCK
FRAC. DIM. ±	SIZES AND MANUFACTURERS
ANGULAR DIM. ±	TOLERANCES ARE NOT INCLUDED.

ELEC. DES. APP.	MECH. DES. APP.
WDE 10/21	[Signature]
CHECKED	FINAL APPROVAL
	FS-103 B

IF IT IS FOUND DESIRABLE TO CHANGE ANY TOLERANCE OR OTHER DETAIL SPECIFIED ON THIS DRAWING NOTIFY THE PURCHASER PROMPTLY.

MAXIMUM ALLOWABLE TOLERANCES HAVE BEEN DETERMINED AND DEVIATIONS WILL BE CAUSE FOR REJECTION. REMOVE ALL BURRS AND SHARP EDGES

TMC-NC	CAT. NO.	M	N	0
FS-104	GH-A	7/16	1/4	.025

STANDARD DRAWING

RELEASED

USED ON

DATE

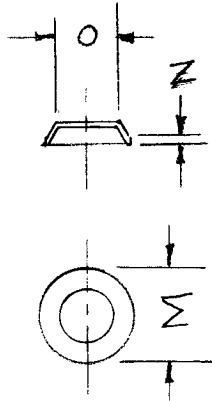
ASS'Y. NO.

PROJECT NO.

MODEL

FS-104

A



DIMENSIONS FOR REF. ONLY

REF. DZUS FASTENER CO. INC

REQ. ITEM	PART NO.	DESCRIPTION	SYMBOL
		THE TECHNICAL MATERIEL CORP. MAMARONECK. NEW YORK	
		ALUMINUM	
		GROMMET, TYPE GH	
		WEIGHT PER PC.	
		2 5/8	
		TYPE & TEMPER	
		HEAT TREAT. SPEC.	
		FINISH & SPEC. NO.	

ISSUE ITEM	CHANGED FROM	DATE	CN. NO.	DRAFTS	CHECKER	ENG. APP.
A 1	WAS FS-103-1	10-22-54	1	C.D.D.	ppp	A
TOLERANCES						
SCALE						
DRILL, PUNCH, COMMERCIAL STOCK SIZES AND MANUFACTURERS TOLERANCES ARE NOT INCLUDED.						
ALL OTHERS	DEC. DIM. ±	FRAC. DIM. ±	ANGULAR DIM. ±			

IF IT IS FOUND DESIRABLE TO CHANGE ANY TOLERANCE OR OTHER DETAIL SPECIFIED ON THIS DRAWING NOTIFY THE PURCHASER PROMPTLY.

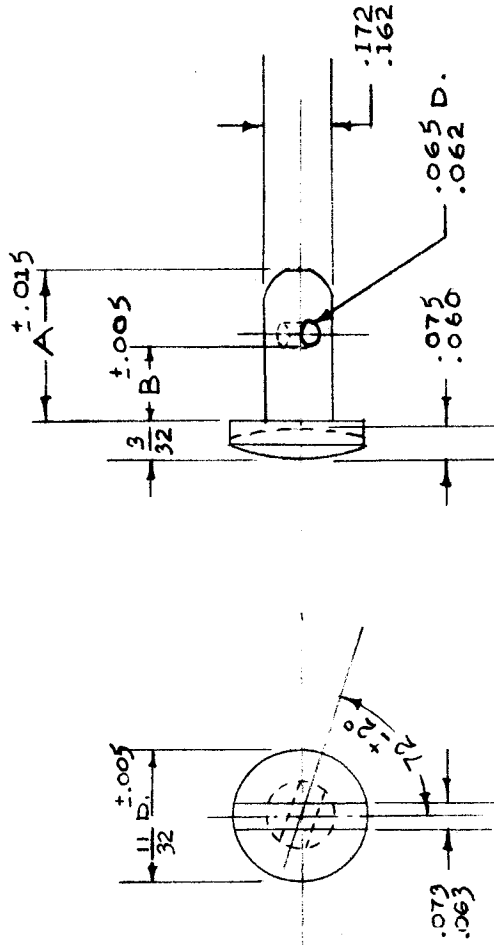
MAXIMUM ALLOWABLE TOLERANCES HAVE BEEN DETERMINED AND DEVIATIONS WILL BE CAUSE FOR REJECTION. REMOVE ALL BURRS AND SHARP EDGES

STANDARD DRAWING

FS-105

USED ON

TMC NO.	MFG. NO.	STUD MARKED	RANGE OF TOT. THICKNESS TO BE FASTENED	STUD LGTH. A	PIN LOC. B	DATE
FS-105-1	98-05-2-8	08	.071 - .080	.375	.195	
FS-105-2	98-05-2-9	09	.081 - .090	.375	.205	
FS-105-3	98-05-2-10	10	.091 - .100	.437	.215	
FS-105-4	98-05-2-11	11	.101 - .110	.437	.225	
FS-105-5	98-05-2-12	12	.111 - .120	.437	.235	
FS-105-6	98-05-2-13	13	.121 - .130	.437	.245	
FS-105-7	98-05-2-14	14	.131 - .140	.437	.255	
FS-105-8	98-05-2-15	15	.141 - .150	.437	.265	
FS-105-9	98-05-2-16	16	.151 - .160	.500	.275	
FS-105-10	98-05-2-26	26	.251 - .260	.562	.375	



DIMENSIONS FOR REF. ONLY.

REF.: SHAKE PROOF INC.

REQ. ITEM	PART NO.	DESCRIPTION	SYMBOL
	ff	THE TECHNICAL MATERIEL CORP. MAMARONECK, NEW YORK	
		STEEL	
		MATERIAL	
		WEIGHT PER PC.	
		TYPE & TEMPER	
		HARDENED & TEMP.	
		HEAT TREAT. SPEC.	
		CADMIUM PLATE (S-105) FINISH & SPEC. NO.	

ISSUE ITEM	CHANGED FROM	DATE	C.N. NO.	DRAFTS CHECKER	ENG. APP.
A 1	-10 ADDED	7/3/53			

SCALE 2" TO 1"

TOLERANCES

DEC. DIM. ±
FRAC. DIM. ±
ANGULAR DIM. ±

DRILL, PUNCH, COMMERCIAL STOCK SIZES AND MANUFACTURERS TOLERANCES ARE NOT INCLUDED.

PROJECT NO.	ASSY. NO.	DATE

MODEL	MFG. NO.	STUD MARKED	RANGE OF TOT. THICKNESS TO BE FASTENED	STUD LGTH. A	PIN LOC. B	DATE

DRAWN	ELEC. DES. APP.	MECH. DES. APP.
G.T.O		

CHECKED	FINAL APPROVAL
C.D.D. 10-27-54	FS-105

STANDARD DRAWING

IF IT IS FOUND DESIRABLE TO CHANGE ANY TOLERANCE OR OTHER DETAIL SPECIFIED ON THIS DRAWING NOTIFY THE PURCHASER PROMPTLY.

MAXIMUM ALLOWABLE TOLERANCES HAVE BEEN DETERMINED AND DEVIATIONS WILL BE CAUSE FOR REJECTION. REMOVE ALL BURRS AND SHARP EDGES

USED ON

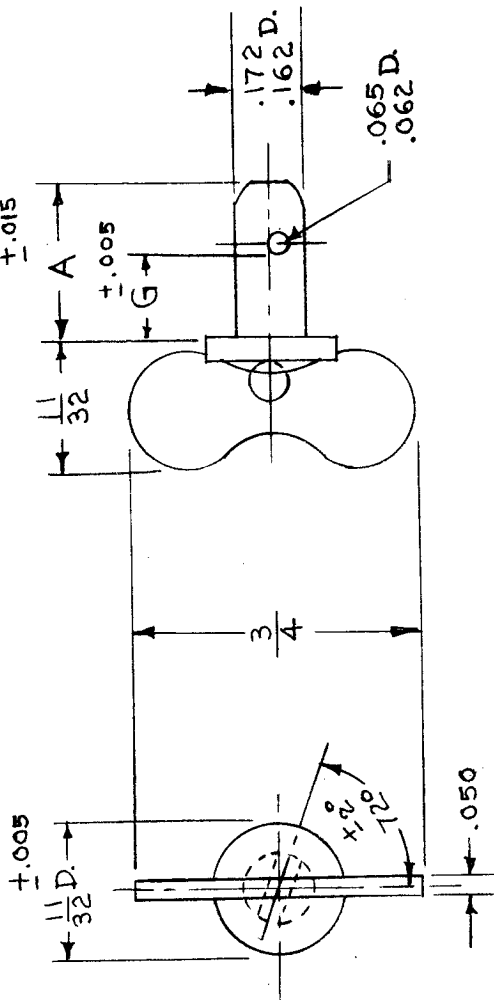
DATE

PROJECT NO.

ASSY. NO.

MODEL

T.M.C. NO.	CAT. NO.	TOTAL TO STUD FASTENED	STUD LENGTH MARKED	STUD LENGTH A	PIN LOCATION G
FS-106-1	98-ow-2-20	.191 - .200	20	.500	.315
FS-106-2	98-ow-2-21	.201 - .210	21	.500	.325
FS-106-3	98-ow-2-22	.211 - .220	22	.562	.335
FS-106-4	98-ow-2-23	.221 - .230	23	.562	.345
FS-106-5	98-ow-2-24	.231 - .240	24	.562	.355
FS-106-6	98-ow-2-25	.241 - .250	25	.562	.365
FS-106-7	98-ow-2-26	.251 - .260	26	.562	.375
FS-106-8	98-ow-2-27	.261 - .270	27	.562	.385
FS-106-9	98-ow-2-28	.271 - .280	28	.625	.395
FS-106-10	98-ow-2-29	.281 - .290	29	.625	.405
FS-106-11	98-ow-2-30	.291 - .300	30	.625	.415
FS-106-12	98-ow-2-31	.301 - .310	31	.625	.425
FS-106-13	98-ow-2-32	.311 - .320	32	.625	.435
FS-106-14	98-ow-2-33	.321 - .330	33	.625	.445
FS-106-15	98-ow-2-34	.331 - .340	34	.625	.455
FS-106-16	98-ow-2-35	.341 - .350	35	.687	.465
FS-106-17	98-ow-2-36	.351 - .360	36	.687	.475
FS-106-18	98-ow-2-37	.361 - .370	37	.687	.485
FS-106-19	98-ow-2-38	.371 - .380	38	.687	.495
FS-106-20	98ow-2-39	.381 - .390	39	.687	.505
FS-106-21	98-ow-2-50	.491 - .500	50	.812	.615



DIMENSIONS FOR REF. ONLY

REF: SHAKEPROOF INC.

REQ. ITEM	PART NO.	DESCRIPTION	SYMBOL
		STEEL	
		MATERIAL WEIGHT PER PC.	
		HARDENED AND TEMPERED.	
		TYPE & TEMPER	
		STOCK SIZE	
		THE TECHNICAL MATERIEL CORP.	
		MAMARONECK, NEW YORK	
		STUD, WING HEAD	
		G.T.O. 2-11-53	
		ELEC. DES. APP.	
		DRAWN	
		CHECKED	
		G.T.O.	
		ELEC. DES. APP.	
		MECH. DES. APP.	
		HEAT TREAT. SPEC.	
		S-105	
		CADMIUM PLATE	
		FINISH & SPEC. NO.	
		FINAL APPROVAL	
		FS-106	

DRILL, PUNCH, COMMERCIAL STOCK SIZES AND MANUFACTURERS TOLERANCES ARE NOT INCLUDED.

DEC. DIM. \pm
FRAC. DIM. \pm
ANGULAR DIM. \pm

TOLERANCES

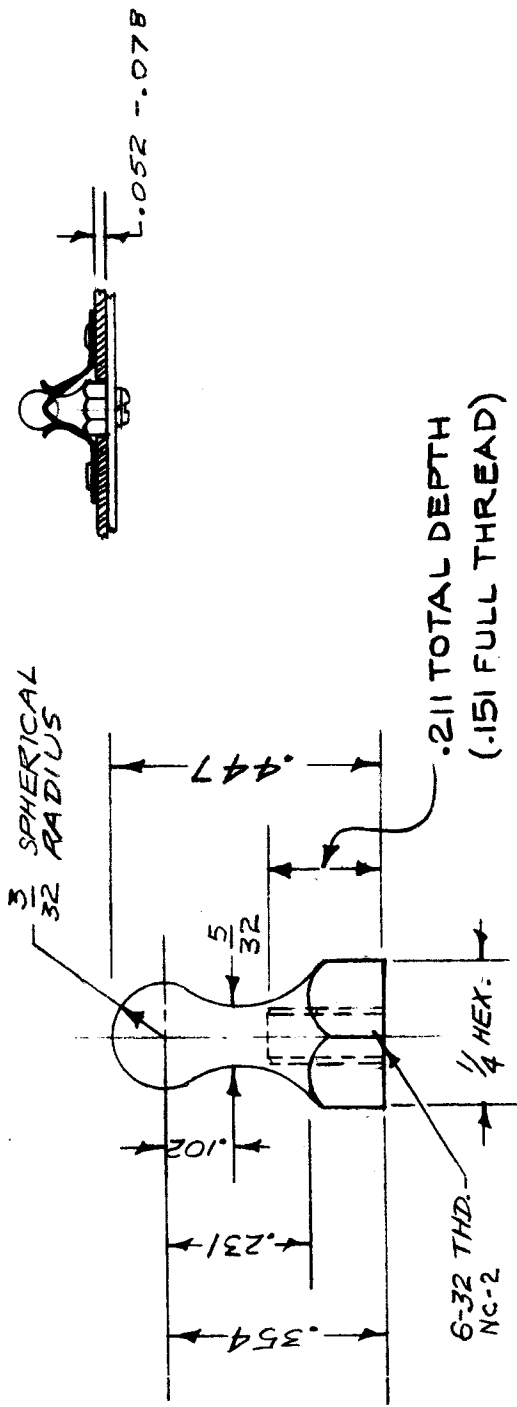
FS-17 B

Req. Per Unit	MODEL	PROJECT NO.	ASSY. NO.	DATE
2	XFK		A-708	8/20/53

USED ON

IF IT IS FOUND DESIRABLE TO CHANGE ANY TOLERANCE OR OTHER DETAIL SPECIFIED ON THIS DRAWING NOTIFY THE PURCHASER PROMPTLY.

MAXIMUM ALLOWABLE TOLERANCES HAVE BEEN DETERMINED AND DEVIATIONS WILL BE CAUSE FOR REJECTION. REMOVE ALL BURRS AND SHARP EDGES



REF: TINNEMAN PRODUCTS INC. P-101-44T-REV'S

REQ. ITEM	PART NO.	DESCRIPTION	SYMBOL
		THE TECHNICAL MATERIEL CORP. MAMARONECK. NEW YORK	
		FASTENER, ANCHOR.	
MATERIAL	WEIGHT PER PC.		
TYPE & TEMPER			
HEAT TREAT. SPEC.			
FINISH & SPEC. NO.			

ISSUE ITEM	CHANGED FROM	DATE	CN. NO.	DRAFTS	CHECKER/ENG. APP.
B	211 TOTAL DEPTH... WAS 242	11/12/53	12863	AMB	AMB
A	1 CAT. # CHANGED	11/25/53	1	C.D.P.	AMB

SCALE

TOLERANCES

DEC. DIM. \pm
FRAC. DIM. \pm
ANGULAR DIM. \pm

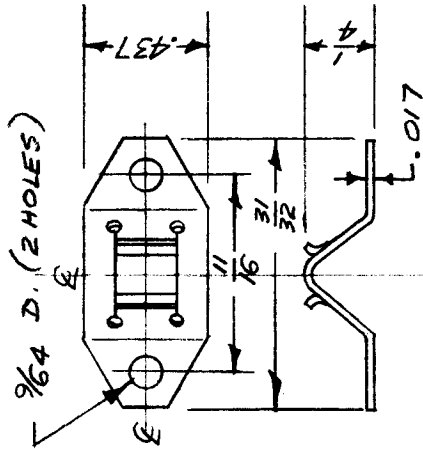
DRILL, PUNCH, COMMERCIAL STOCK SIZES AND MANUFACTURERS TOLERANCES ARE NOT INCLUDED.

DRAWN: V.G. 11/25/53
ELEC. DES. APP. A.J.J.
MECH. DES. APP. W.D.
CHECKED: J.A.D.
FINAL APPROVAL: W.D.

FS-107 B

IF IT IS FOUND DESIRABLE TO CHANGE ANY TOLERANCE OR OTHER DETAIL SPECIFIED ON THIS DRAWING NOTIFY THE PURCHASER PROMPTLY.

MAXIMUM ALLOWABLE TOLERANCES HAVE BEEN DETERMINED AND DEVIATIONS WILL BE CAUSE FOR REJECTION. REMOVE ALL BURRS AND SHARP EDGES



FS-108 A

Req. Per. UNIT	PROJECT NO.	ASSY. NO.	DATE
2	XFK	A-684	5/10/54

REF: TINNEMAN PRODUCTS INC. C4883-017-1

REQ. ITEM	PART NO.	DESCRIPTION	SYMBOL
		THE TECHNICAL MATERIEL CORP. MAMARONECK. NEW YORK	
STOCK SIZE		CATCH, SPRING	
MATERIAL			
WEIGHT PER PC.			
TYPE & TEMPER			
HEAT TREAT. SPEC.			
FINISH & SPEC. NO.			

ISSUE ITEM	CHANGED FROM	DATE	C.N. NO.	DRAFTS CHECKER	ENG. APP.
A 1	CAT. # CHANGED	7/20/53	1	C.D.D.	J.D. W.D.
TOLERANCES					
DEC. DIM. ±					
FRAC. DIM. ±					
OTHERS ANGULAR DIM. ±					
SCALE					
DRILL, PUNCH, COMMERCIAL STOCK SIZES AND MANUFACTURERS TOLERANCES ARE NOT INCLUDED.					

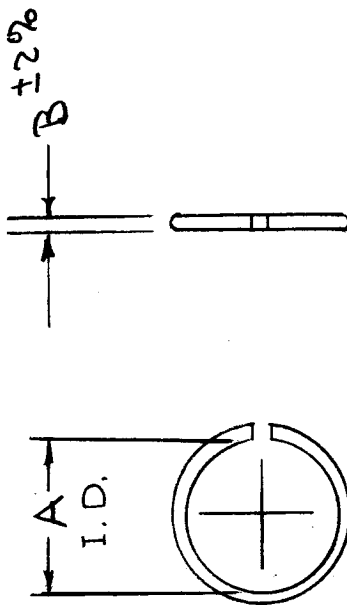
DRAWN	ELEC. DES. APP.	MECH. DES. APP.
LG	A. J. J.	W.D.
CHECKED		
		FINAL APPROVAL
		FS-108
		A

IF IT IS FOUND DESIRABLE TO CHANGE ANY TOLERANCE OR OTHER DETAIL SPECIFIED ON THIS DRAWING NOTIFY THE PURCHASER PROMPTLY.

MAXIMUM ALLOWABLE TOLERANCES HAVE BEEN DETERMINED AND DEVIATIONS WILL BE CAUSE FOR REJECTION. REMOVE ALL BURRS AND SHARP EDGES

TMC NO.	PART. NO.	A I.D.	B	PANEL HOLE SIZE ^{1/1000}	USE TOOL TYPE
FS-109-1	3	.172	.022	3/16	FRST 3
-2	3 1/2	.202	.022	7/32	3 1/2
-3	A	.230	.029	1/4	A
-4	5	.288	.035	5/16	5
-5	6	.345	.043	3/8	6
-6	7	.402	.051	7/16	7

MATERIAL - STEEL, HEAT TREATED, CADMIUM PLATED.



TOL. "A" - .070
 B - .070
 7 - .070

REF: DZUS MFG. CO.

FS-109

USED ON

Req. Per. UNIT	MODEL	PROJECT NO.	ASS'Y. NO.	DATE
13	XFK			

REQ. ITEM	PART NO.	DESCRIPTION	SYMBOL
#		THE TECHNICAL MATERIEL CORP. MAMARONECK. NEW YORK	
#	#	RING, STUD RETAINING	
MATERIAL	WEIGHT PER PC.		
#	#		
TYPE & TEMPER			
#			
HEAT TREAT. SPEC.			
#			
FINISH & SPEC. NO.			

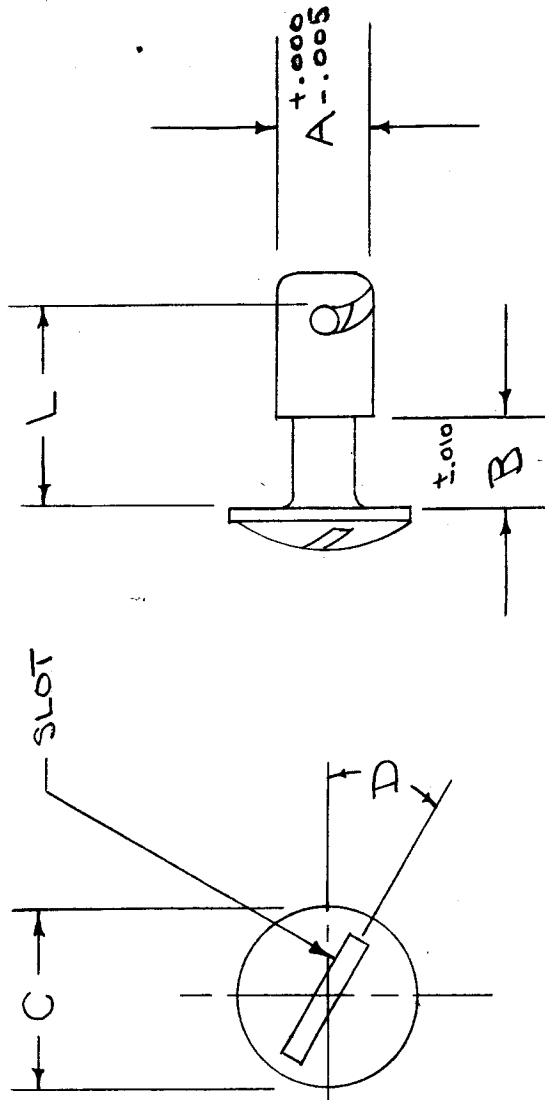
ISSUE ITEM	CHANGED FROM	DATE	CN. NO.	DRAFTS CHECKER	ENG. APP.
A 1	CHGD. "A" DIM. TO "A" I.D. IN PICTORIAL & CHART	6-14-62	6790	V.R.R.	JHE
TOLERANCES					
SCALE					
DRILL, PUNCH, COMMERCIAL STOCK SIZES AND MANUFACTURERS TOLERANCES ARE NOT INCLUDED.					
ALL OTHERS	DEC. DIM. ±				
	FRAC. DIM. ±				
	ANGULAR DIM. ±				

FS-109 A

IF IT IS FOUND DESIRABLE TO CHANGE ANY TOLERANCE OR OTHER DETAIL SPECIFIED ON THIS DRAWING NOTIFY THE PURCHASER PROMPTLY.

MAXIMUM ALLOWABLE TOLERANCES HAVE BEEN DETERMINED AND DEVIATIONS WILL BE CAUSE FOR REJECTION. REMOVE ALL BURRS AND SHARP EDGES

T.M.C. No.	CAT. No.	A	C	D	B	L	Panel Size
FS-110-1	AJA-30	1/4	1/16	28°	.100	.300	1/4
-2	AJA-50	1/4	1/16	28°	.250	.500	1/4
-3	AJA-45	1/4	1/16	28°	.225	.450	1/4
-4	AJA-40	1/4	1/16	28°	.200	.400	1/4
-5	AJS-35	5/16	9/16	30°	.125	.350	5/16
-6	AJS-40	5/16	9/16	30°	.190	.400	5/16
-7	AJA-35	1/4	1/16	28°	.150	.350	1/4



STANDARD DRAWING

FS-110 E

USED ON

MODEL PROJECT NO. ASS'Y. NO. DATE

REQ. ITEM	PART NO.	DESCRIPTION	SYMBOL
H		STUD	
STEEL		STOCK SIZE	
MATERIAL		WEIGHT PER PC.	
HEAT TREATED		TYPE & TEMPER	
C.D.P. 824 SA		DRAWN	WDC
		ELEC. DES. APP.	
		CHECKED	WDC
		FINAL APPROVAL	
		MECH. DES. APP.	
		FINISH & SPEC. NO.	FS-110 E

ISSUE ITEM	CHANGED FROM	DATE	CN. NO.	DRAFTS	CHECKER	ENG. APP.
E 1	ON FS-110-7, DIM. "B" WAS .100	3/26/63	8657			
D 1	FS-110-7 ADDED	1/15/60				
C 1	Panel Hole Size Added	12/31/58				
B 1	FS-110-4 Added	1/20/56	2			
A 1	FS-110-2 ADDED	7/1/54	1			

SCALE 3-401-1

TOLERANCES
DEC. DIM. ±
FRAC. DIM. ±
OTHERS ANGULAR DIM. ±

DRILL, PUNCH, COMMERCIAL STOCK SIZES AND MANUFACTURERS TOLERANCES ARE NOT INCLUDED.

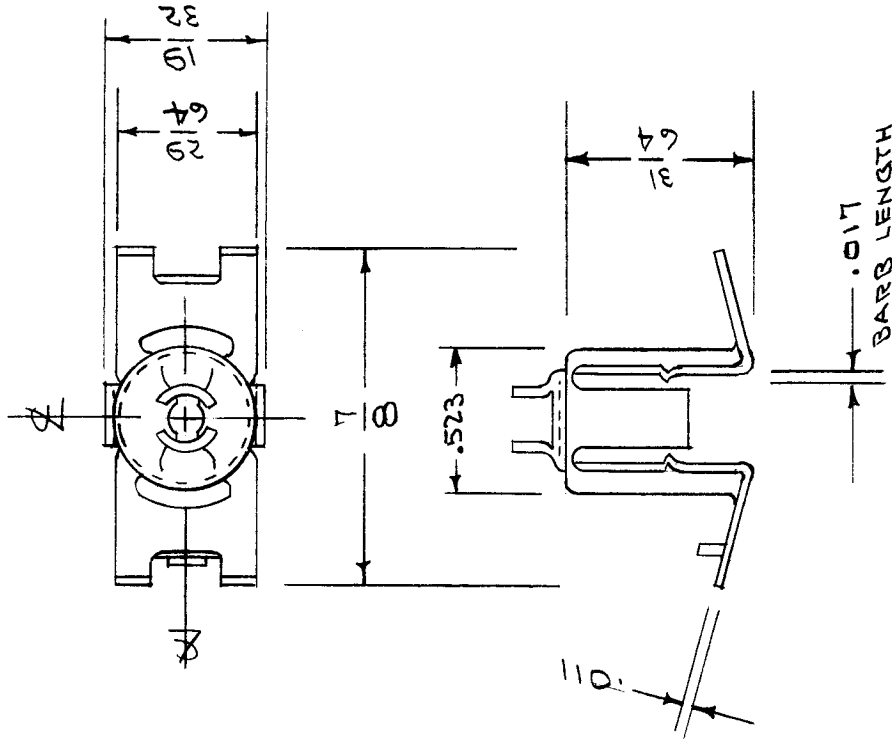
IF IT IS FOUND DESIRABLE TO CHANGE ANY TOLERANCE OR OTHER DETAIL SPECIFIED ON THIS DRAWING NOTIFY THE PURCHASER PROMPTLY.

MAXIMUM ALLOWABLE TOLERANCES HAVE BEEN DETERMINED AND DEVIATIONS WILL BE CAUSE FOR REJECTION. REMOVE ALL BURRS AND SHARP EDGES

STANDARD DRAWING

FS-111

USED ON
MODEL PROJECT NO. ASSY. NO. DATE



FOR.
SCREW SIZE - 6-32
COIL FORM O.D. - .500
PANEL RANGE - .034/.062

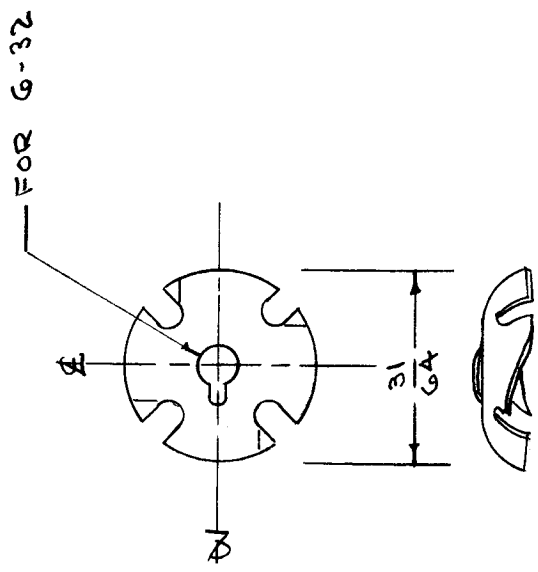
REF: TINHERMAN PRODUCTS INC. # C6801-632-24

REQ. ITEM	PART NO.	DESCRIPTION	SYMBOL
STEEL		THE TECHNICAL MATERIEL CORP. MAMARONECK, NEW YORK	
MATERIAL		FASTENER, TUNING	
SPRING		LARGE	
TYPE & TEMPER		CDP. 12-8-54	4H
HEAT TREATED		DRAWN	MECH. DES. APP.
HEAT TREAT. SPEC.		CHECKED	G.T.O
CADMIUM PLATE			FINAL APPROVAL
.0002			FS-111
FINISH & SPEC. NO.			

ISSUE ITEM	CHANGED FROM	DATE	CN. NO.	DRAFTS	CHECKER	ENG. APP.
TOLERANCES						
SCALE						
DRILL, PUNCH, COMMERCIAL STOCK SIZES AND MANUFACTURERS TOLERANCES ARE NOT INCLUDED.						
ALL	DEC. DIM. ±					
OTHERS	FRAC. DIM. ±					
	ANGULAR DIM. ±					

IF IT IS FOUND DESIRABLE TO CHANGE ANY TOLERANCE OR OTHER DETAIL SPECIFIED ON THIS DRAWING NOTIFY THE PURCHASER PROMPTLY.

MAXIMUM ALLOWABLE TOLERANCES HAVE BEEN DETERMINED AND DEVIATIONS WILL BE CAUSE FOR REJECTION. REMOVE ALL BURRS AND SHARP EDGES



STANDARD DRAWING

FS-112

USED ON	
MODEL	PROJECT NO.
	ASSY. NO.
	DATE

REF: TINNEMAN PRODUCTS INC. # CT133B-G32-2A

REQ. ITEM	PART NO.	DESCRIPTION	SYMBOL
	.012	THE TECHNICAL MATERIEL CORP. MAMARONECK. NEW YORK	
STEEL	STOCK SIZE	FASTENER, TUNING	
MATERIAL	WEIGHT PER PC.	SMALL	
SPRING			
TYPE & TEMPER		CDP. 12-8-54 PL.K.1-28-55	WDL
HEAT TREATED		DRAWN	
HEAT TREAT. SPEC.		###	
CADMIUM PLATE		CHECKED	
.0002			
FINISH & SPEC. NO.			
			FS-112

ISSUE ITEM	CHANGED FROM	DATE	CN. NO.	DRAFTS	CHECKER	ENG. APP.
TOLERANCES						
DEC. DIM. ±	SCALE					
FRAC. DIM. ±	DRILL, PUNCH, COMMERCIAL STOCK					
ANGULAR DIM. ±	SIZES AND MANUFACTURERS					
	TOLERANCES ARE NOT INCLUDED.					

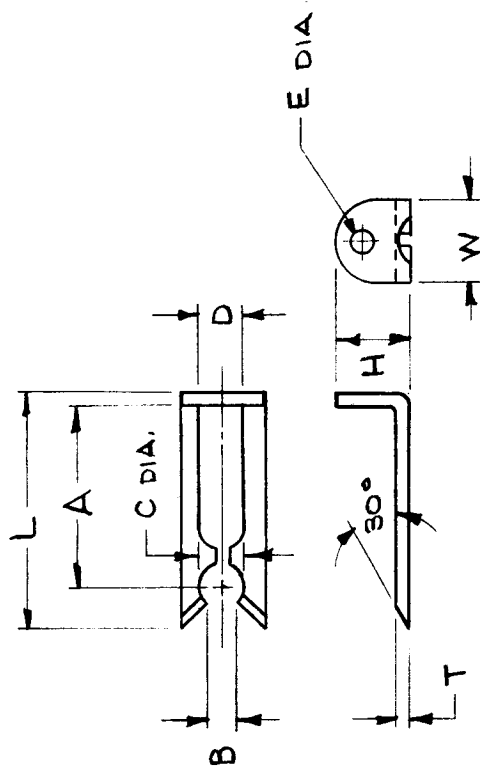
STANDARD DRAWING

USED ON ABS'Y. NO. **8-15-63**
 MODEL **STANDARD**

REQ. PER UNIT **4**
 DATE

FS-118

TMC PART No.	MFG'S PART No.	MILITARY STD. No.	DIMENSIONS								MATERIAL	FINISH	
			A	B	C DIA.	D	E	H	L	T			W
FS-118-1	1-L	NONE	15/32	.093	.125	.130	.047	3/16	39/64	.032	7/32	PHOSPHOR BRONZE, SPRING TEMP.	NICKEL PLATED
FS-118-2	2-L	MS-21332-11	7/8	.156	.187	3/16	.125	13/32	1-1/8	.050	7/16	STAINLESS STEEL	TUMBLER AND PASSIVATED



REF: FS-117

REQ. ITEM	PART NO.	DESCRIPTION	SYMBOL
SEE DIM "T"		THE TECHNICAL MATERIEL CORP. MAMARONECK. NEW YORK	
SEE CHART		LATCH, SNAPSIDE	
MATERIAL		FASTENER	
TYPE & TEMPER	—H—	—H—	
HEAT TREAT. SPEC.			
SEE CHART			
FINISH & SPEC. NO.			FS-118

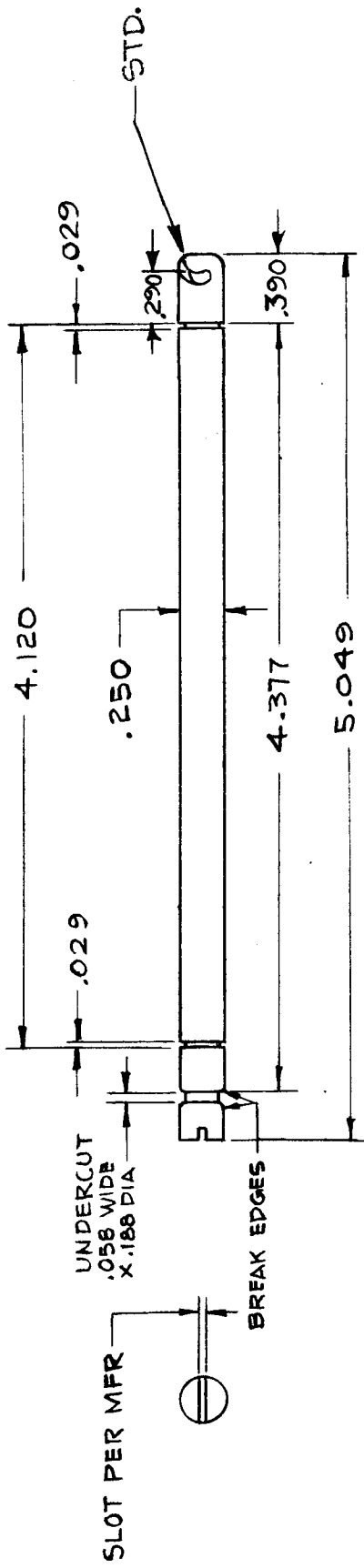
DRAWN *G. P.* CHECKED *K. G.*
 DATE **10-30**
 FINAL APPROVAL *RS*

THE CONTENTS OF THIS DRAWING ARE THE EXCLUSIVE PROPERTY OF THE TECHNICAL MATERIEL CORP. ITS UNAUTHORIZED USE FOR REPRODUCTION IN WHOLE OR IN PART IS STRICTLY FORBIDDEN.	REQ. PER UNIT	USED ON	DATE
	MODEL	ASSY. NO.	
#		VLR-1, LFS-1	# 8-12-63

FS 122

A

TMC PART NO.	MFG PART NO.	DIMENSIONS
FS 122-1	E4X847	AS SHOWN



REQ. ITEM		PART NO.	M. GELLMAN	DESCRIPTION	SYMBOL
		.25 DIA	THE TECHNICAL MATERIEL CORP. MAMARONECK. NEW YORK		
		STEEL C1118	STUD, TURNLOCK		
MATERIAL		PER MFR	FASTENER		
TYPE & TEMPER		HEAT TREAT. SPEC	DRAWN	CHECKED	FINAL APPROVAL
CADMIUM-00-P-415		CLASS 2	G. Lane		RAC
FINISH & SPEC. NO.		ELC. DES. APP. MECH. DES. APP.		FS 122	

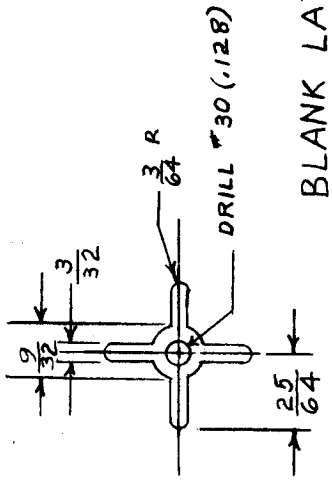
OGILVIE PRESS, INC., BROOKLYN 17, N. Y. REPROVEL NO. 400H 3787

STANDARD DRAWING

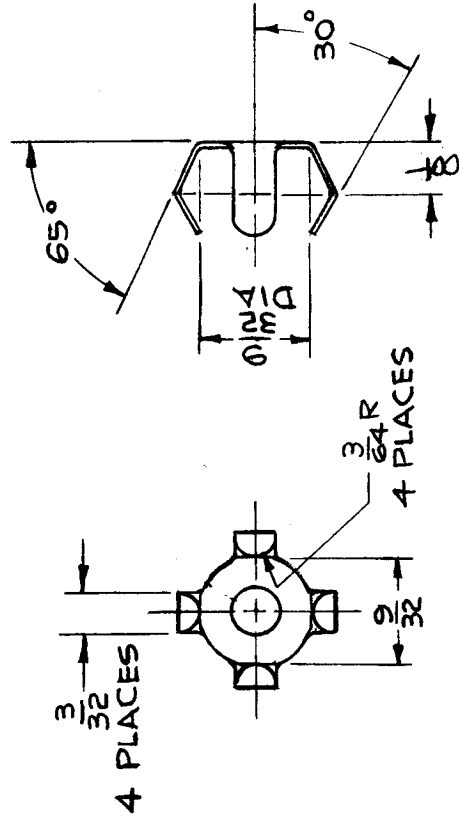
TMC FORM NO. 108-A

STANDARD DRAWING

REQ. PER UNIT	USED ON	DATE
4	ASSY. NO.	12-26-63
	MODEL	
	DDR-5	
		FS-124
		A



BLANK LAYOUT



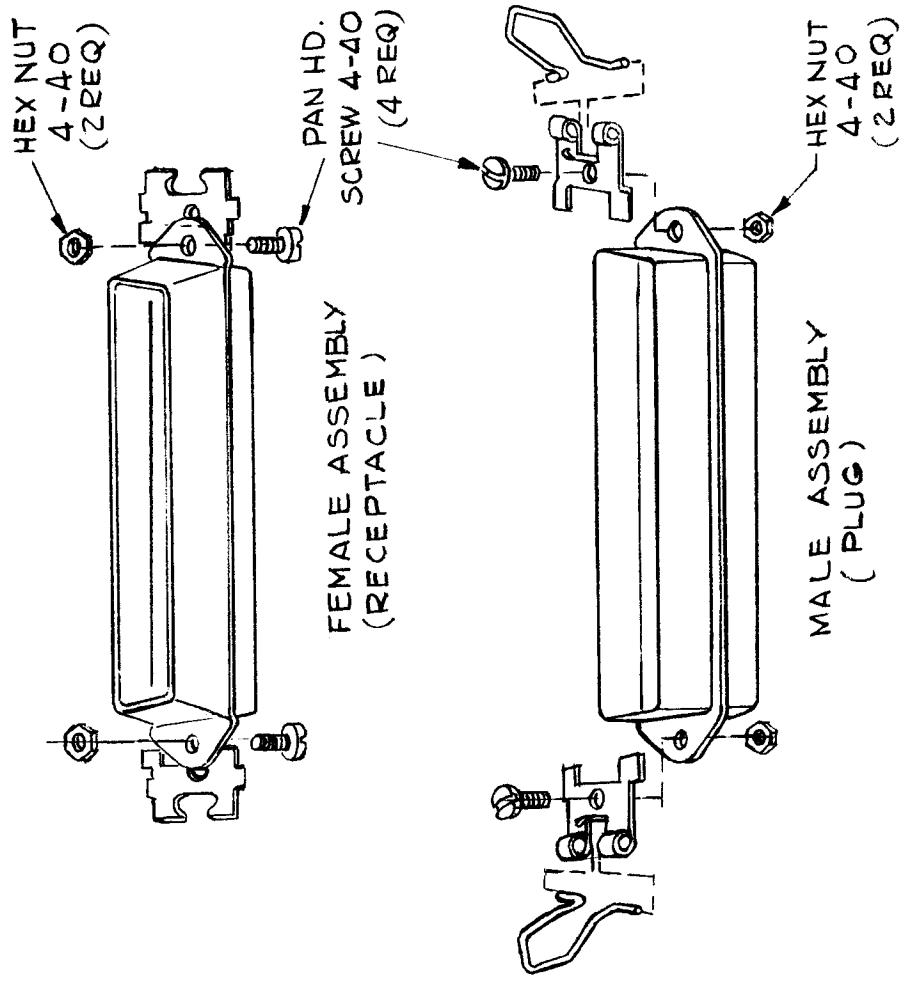
SPECIFICATIONS.

MATERIAL: .015 ± .000 SPRING STEEL
 HEAT TREAT: 600°F FOR 2 HOURS.
 FINISH: TMC S-105 BRIGHT CADMIUM PLATE.

REQ. ITEM	PART NO.	EATON DESCRIPTION	SYMBOL
SEE SPEC	SEE SPEC	THE TECHNICAL MATERIEL CORP. MAMARONECK. NEW YORK	
SEE SPEC	SEE SPEC	FASTENER, MOUNTING	
SEE SPEC	SEE SPEC		
TYPE & TEMPER	HEAT TREAT. SPEC.	CHECKED	FINAL APPROVAL
SEE SPEC	SEE SPEC	JMY	JDe 1/10/64
FINISH & SPEC. NO.		ELEC. DES. APP.	MECH. DES. APP.
SEE SPEC		FEZ	BS.
			FS-124
			A

SYM	DESCRIPTION	DATE	CH. NO.	DRAFTS	CHECKER	ENG. APP.
A	3/64 R WAS 9/64 R	4-3-64	1161	AM.	JDe	JDe
	UNLESS OTHERWISE SPECIFIED DIMENSIONS ARE IN INCHES AND INCLUDE CHEMICALLY APPLIED OR PLATED FINISHES	SCALE	2/1			
	TOLERANCES	CODE	S-401-259			
	FRACTIONS					
	DECIMALS					
	X ± .05					
	XX ± .01					
	XXX ± .005					
	ANGLES					
	± 0° 30'					

TMC PART NO.	FS125-1	MFG. PART NO.	17-529	USED WITH	JJ310 & JJ313	REQ. PER UNIT	1	MODEL	ARCA	ASSY. NO.		DATE	9-3-64	USED ON	FS125	A
--------------	---------	---------------	--------	-----------	---------------	---------------	---	-------	------	-----------	--	------	--------	---------	-------	---



— NOTE —
CONNECTOR SHOWN FOR
ASSY. REFERENCE ONLY

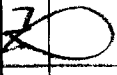
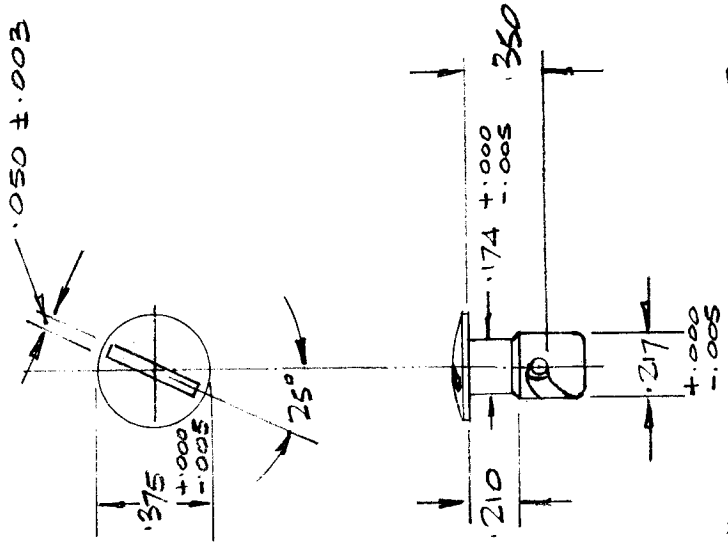
SYM	DESCRIPTION	DATE	CH. NO.	DRAFTS	CHECKER	ENG. APP.	REQ. ITEM	PART NO.	EATON	DESCRIPTION	SYMBOL
A	MATL WAS BRASS	1-9-70	19714	KD	<i>AK</i>	<i>F.B.H.</i>			THE TECHNICAL MATERIEL CORP. MAMARONECK, NEW YORK		
Q	ORIGINAL RELEASE FOR PRODUCTION	9-9-64	Q	<i>9/9</i>				STEEL	SPRING LATCH LOCK ASSY		
X	EXP. RELEASE	6-11-64	-	GDL				CADMIUM PLATE CLEAR CHROMATE FINISH & SPEC. NO.			
								MATERIAL			
								TYPE & TEMPER			
								HEAT TREAT. SPEC.			
								CHECKED			
								DRAWN			
								DATE			
								SCALE			
								NOT SCALE			
								CODE			
								C			
								TOLERANCES			
								± 1/64			
								ANGLES,			
								± 0° 30'			
								DECIMALS			
								.X ± .05			
								.XX ± .01			
								.XXX ± .005			
								UNLESS OTHERWISE SPECIFIED			
								DIMENSIONS ARE IN INCHES AND INCLUDE			
								CHEMICALLY APPLIED OR PLATED FINISHES			
								FINAL APPROVAL			
								FS125			
								MECH. DES. APP.			
								ELEC. DES. APP.			
								9/14/64			
								G.D.L. 9/3/64			

ISSUE	ITEM	CHANGED FROM	DATE	CH. NO.	DRAFTS	CHECKER	ENG. APP.	REQ.	ITEM	PART NO.	DESCRIPTION	SYMBOL
Ø		RELEASE TO PROD.	28/11/68		JB		<i>[Signature]</i>					

FASTENED TO BE IN ACCORDANCE WITH MIL-F-5531
USE WITH P/N FS10003 & FS10004

MANUFACTURED'S PART N: R 3 1/2
MANUFACTURER S401-1

MODEL	PROJECT NO.	DATE	STOCK SIZE
AMEB	074/69	28 Nov. 68	
TMC (Canada) LIMITED OTTAWA ONTARIO		RECEPTACLE FASTENER	
DRAWN		CHECKED	
BARTLETT		MCH. DES. APP.	
ELEC. DES. APP.		FINAL APPROVAL	
MATERIAL		WEIGHT PER PC.	
TYPE & TEMPER		HEAT TREAT. SPEC.	
FINISH & SPEC. NO.		FS 10003 Ø	

ISSUE	ITEM	CHANGED FROM	DATE	CN. NO.	DRAFTS	CHECKER	ENG. APP.	REQ.	ITEM	PART NO.	DESCRIPTION	SYMBOL
Ø		RELEASED TO PROD'N	28/1/68		JB							
												
<p>FASTENER TO BE IN ACCORDANCE WITH MIL - F. 5591</p> <p>USE WITH P/N FS10004 & FS10003</p>												
<p>MANUFACTURER'S PART N° 43'3712 MANUFACTURED BY S401.1</p>												
AMC 83		071/69		PROJECT NO.		DATE		ABS'Y. NO.		TMC (Canada) LIMITED OTTAWA ONTARIO		
MODEL		USED ON		STOCK SIZE		MATERIAL		WEIGHT PER PC.		STUD, FASTENER		
				SAE 2317 STEEL						DRAWN		
										ELEC. DES. APP.		
										MECH. DES. APP.		
										CHECKED		
										ELEC. DES. APP.		
										MECH. DES. APP.		
										FINISH & SPEC. NO.		
										FS 10003		
										Ø		

ISSUE	ITEM	CHANGED FROM	DATE	CN. NO.	DRAFTS	CHECKER	ENG. APP.	REQ.	ITEM	PART NO.	DESCRIPTION	SYMBOL
φ		RELEASE TO PROD. 28/1/68			JB		<i>W</i>					
<p>FASTENER TO BE IN ACCORDANCE WITH MIL - F - 5591</p> <p>USE WITH P/NS10002 & FS10003</p>												
<p>MANUFACTURED BY TMC (Canada) LIMITED OTTAWA ONTARIO</p>												
<p>MANUFACTURED BY TMC (Canada) LIMITED OTTAWA ONTARIO</p>												
<p>DETAINING RING</p>												
<p>BARTLETT</p>												
<p>DRAWN</p>												
<p>CHECKED</p>												
<p>ELEC. DES. BY</p>												
<p>MECH. DES. BY</p>												
<p>FINAL APPROVAL</p>												
<p>FS10004 φ</p>												
<p>STOCK SIZE</p>												
<p>CARBON STEEL</p>												
<p>MATERIAL</p>												
<p>WEIGHT PER PC.</p>												
<p>TYPE & TEMPER</p>												
<p>TO SPRING TEMPER</p>												
<p>HEAT TREAT. SPEC.</p>												
<p>CAD. PLATE</p>												
<p>FINISH & SPEC. NO.</p>												
<p>USED ON</p>												
<p>PROJECT NO. 074/69</p>												
<p>ASSY. NO.</p>												
<p>DATE 28 NOV 68</p>												
<p>IF IT IS FOUND DESIRABLE TO CHANGE ANY TOLERANCE OR OTHER DETAIL SPECIFIED ON THIS DRAWING NOTIFY THE PURCHASER PROMPTLY.</p>												
<p>SCALE</p>												
<p>DIMENSIONS IN INCHES UNLESS OTHERWISE SPECIFIED</p>												
<p>DRILL: PUNCH, COMMERCIAL STOCK SIZES AND MANUFACTURERS TOLERANCES ARE NOT INCLUDED.</p>												
<p>MAXIMUM ALLOWABLE TOLERANCES HAVE BEEN DETERMINED AND DEVIATIONS WILL BE CAUSE FOR REJECTION. REMOVE ALL BURRS AND SHARP EDGES</p>												
<p>TOLERANCES</p>												
<p>DEC. DIM. ± .X = .08</p>												
<p>FRAC. DIM. ± 1/64 .XX = .01</p>												
<p>ANGULAR DIM. ± 0° 30' .XXX = .008</p>												
<p>ALL OTHERS</p>												