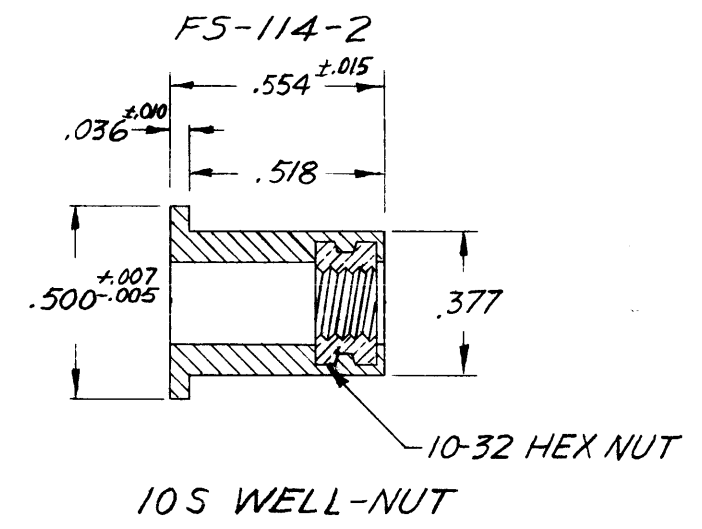
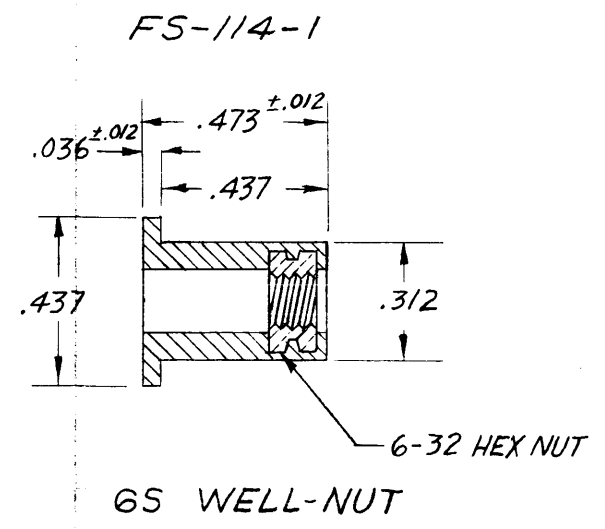


— SPECIFICATIONS —

FS-114

TMC PART NO.	TYPE	STANDARD THREAD	SUITABLE FOR WALL THICKNESS	HOLE DIAM.
FS-114-1	6S	6-32	.015" TO .154" .437 AND UP	5/16"
FS-114-2	10S	10-32	.015" TO .192" .518" AND UP	3/8"



NOTICE TO PERSONS RECEIVING THIS DRAWING

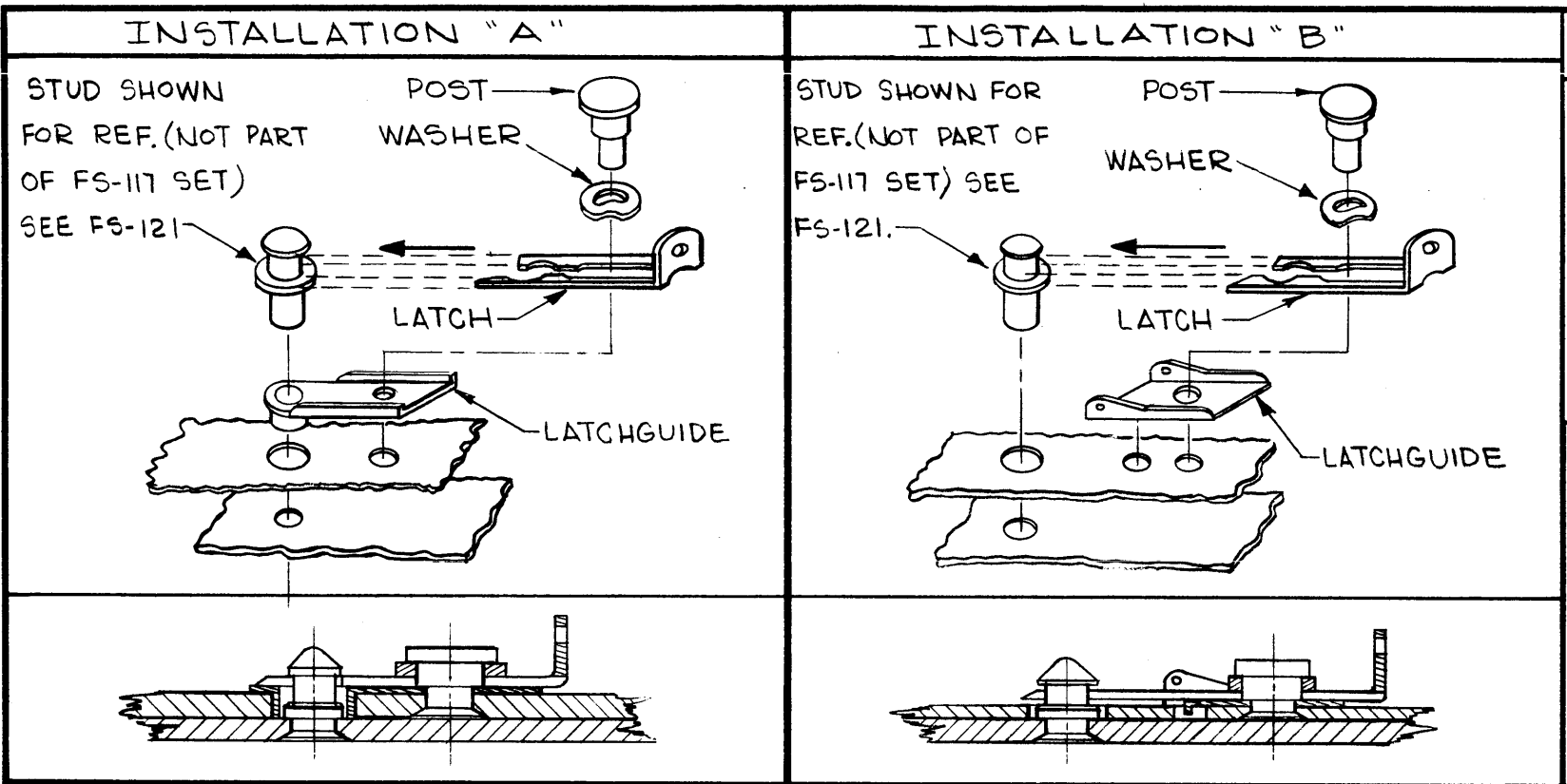
THE TECHNICAL MATERIEL CORPORATION claims proprietary right in the material disclosed herein. This drawing is issued in confidence for engineering information only and may not be reproduced or used to manufacture anything shown hereon without permission from THE TECHNICAL MATERIEL CORPORATION to the user. This drawing is loaned for mutual assistance and is subject to recall at any time.

Property of:
THE TECHNICAL MATERIEL CORPORATION
MAMARONECK, NEW YORK

SYM	DESCRIPTION	DATE	CH. NO.	DRAFTS	CHECKER	ENG. APP.
UNLESS OTHERWISE SPECIFIED:		SCALE: S401-145				
DIMENSIONS ARE IN INCHES		MAXIMUM ALLOWABLE TOLERANCES HAVE BEEN DETERMINED AND ANY DEVIATIONS WILL BE CAUSE FOR REJECTION.				
TOLERANCES ON FRACTIONS ± 1/64 DECIMALS ± .005 ANGLES ± 1/2°		REMOVE ALL BURRS AND SHARP EDGES				

REQ. PER UNIT	GPR-92	9-7-61
MODEL	SECTION	ASS'Y. NO.
USED ON		

REQ. ITEM	PART NO.	GELLMAN	DESCRIPTION	SYMBOL
STOCK SIZE		THE TECHNICAL MATERIEL CORP. MAMARONECK, NEW YORK		
722 BLACK NEOPRENE		FASTENER, WELL-NUT		
MATERIAL				
TYPE & TEMPER	HEAT TREAT. SPEC.	DRAWN	CHECKER	FINAL APPROVAL
		wh	RAC	FS-114
FINISH & SPEC. NO.		ELEC. DES. APP.	MECH. DES. APP.	



BYM		DESCRIPTION	DATE	E.M.N. NO.	DRAFT	CHKD	APPD
A		ON CHART, FS-117-4 ADDED.	7.13.64	11713	WFB	JCS	

TMC PART NUMBER (SET)	MFG PART NO.	MILITARY STANDARD NUMBER	CONSISTS OF ONE EACH OF THE FOLLOWING PARTS				SEE INSTALLATION DETAIL	USED ON
			LATCH	LATCHGUIDE	POST	WASHER		
FS-117-1	NONE	NONE	FS-118-1	FS-119-1	FS-120-1	WA-131-22	A	TTR-10
FS-117-2	NONE	NONE	FS-118-1	FS-119-2	FS-120-1	WA-131-22	B	VLR
FS-117-3	NONE	NONE	FS-118-2	FS-119-3	FS-120-2	WA-131-23	B	TTR, VLR
FS-117-4	NONE	NONE	FS-118-2	FS-119-3	FS-120-3	WA-131-23	B	RTPP-1

A
FS-117

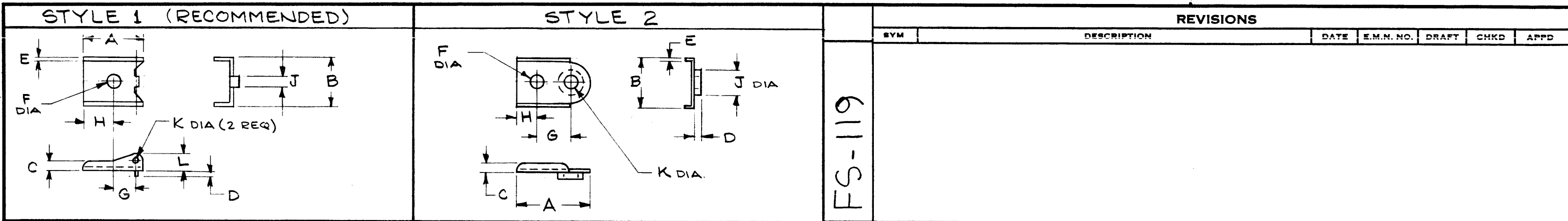
NOTES

STANDARD DRAWING

QTY./UNIT	MODEL USED ON	ASS'Y. NO.
SCALE NONE	CODE C	S401-214

THE CONTENTS OF THIS DRAWING ARE THE EXCLUSIVE PROPERTY OF THE TECHNICAL MATERIEL CORP. ITS UNAUTHORIZED USE OR REPRODUCTION IN WHOLE OR IN PART IS STRICTLY FORBIDDEN.

REQ'D.	ITEM	PART NUMBER	DESCRIPTION	SYMBOL
M. GELLMAN LIST OF MATERIAL				
MATERIAL			THE TECHNICAL MATERIEL CORP. MAMARONECK, NEW YORK	
FINISH			TITLE FASTENER, SNAPSLIDE, SET	
UNLESS OTHERWISE SPECIFIED DIMENSIONS ARE IN INCHES AND INCLUDE CHEMICALLY APPLIED OR PLATED FINISHES			<small>DRAWN</small> <small>DATE</small> 8-28-63	<small>FINAL APPROVAL</small> <small>DATE</small> 10-30-63
			<small>CHECKED</small> <small>DATE</small> 10-30-63	<small>DATE</small> 11/4/63
DECIMALS .X ± .05 .XX ± .01 .XXX ± .005			TOLERANCES	
			FRACTIONS ± 1/64 ANGLES ± 0° 30'	
			<small>ELECT. DES.</small> JC	<small>DATE</small> 11/4/63
			<small>MECH. DES.</small> JC	<small>DATE</small> 11/4/63
			FS-117	A
			SHEET	REV. LTR.


FS-119

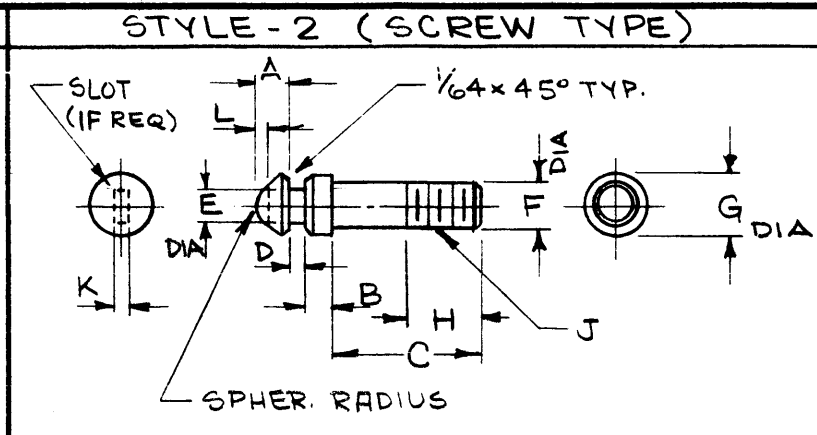
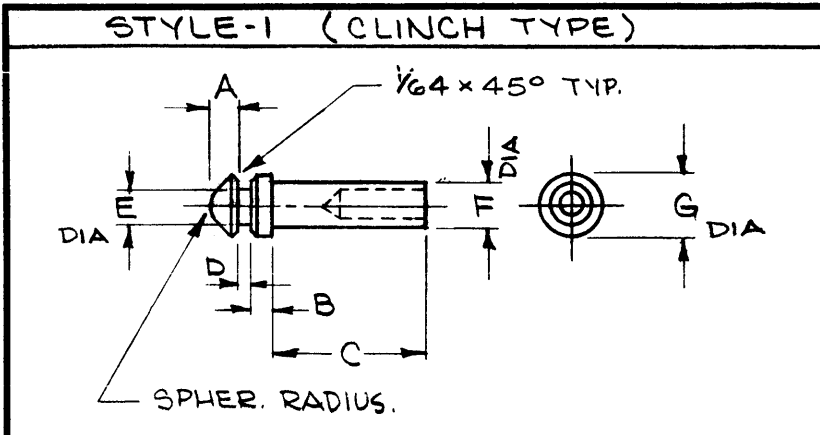
TMC PART NO.	MFG'S PART NO.	MILITARY STANDARD NUMBER	STYLE	DIMENSIONS											MATERIAL	FINISH
				A	B	C	D	E	F DIA.	G	H	J	K DIA	L		
FS-119-1	1-G-2	NONE	2	39/64	9/32	1/32	5/64	.010	.082 ±.002	.344	1/8	.219 DIA	.197	NONE	BRASS	NICKEL
FS-119-2	1-G-1	NONE	1	21/64	9/32	3/64	1/32	.016	.082 ±.002	.140	1/8	.047	.047	1/8	BRASS	NICKEL
FS-119-3	2-G-1	MS-21332-21	1	5/8	33/64	3/32	1/16	.022	.129 ^{+.002} / _{-.000}	.250	5/16	.125	.063	3/16	STAINLESS STEEL	TUMBLE & PASSIVATE

REF: FS-117

REQ'D.	ITEM	PART NUMBER	DESCRIPTION	SYMBOL
M. GELLMAN LIST OF MATERIAL				
MATERIAL			THE TECHNICAL MATERIEL CORP. MAMARONECK, NEW YORK	
SEE CHART			TITLE	
FINISH			LATCHGUIDE, SNAPSLIDE FASTENER	
SEE CHART			UNLESS OTHERWISE SPECIFIED DIMENSIONS ARE IN INCHES AND INCLUDE CHEMICALLY APPLIED OR PLATED FINISHES	
DRAWN		DATE	FINAL APPROVAL	
<i>G. Sencen</i>		8-15-63	 FS-119	
CHECKED		DATE		
<i>J. Sobel</i>		10-30-63	SHEET	
ELECT. DES.		DATE	REV. LTR.	
MECH. DES.		DATE		
<i>jc</i>		11/4/63		

STANDARD DRAWING		
Q'TY./UNIT	MODEL USED ON	ASS'Y. NO.
SCALE	CODE	
NONE	C	S401-214
THE CONTENTS OF THIS DRAWING ARE THE EXCLUSIVE PROPERTY OF THE TECHNICAL MATERIEL CORP. ITS UNAUTHORIZED USE OR REPRODUCTION IN WHOLE OR IN PART IS STRICTLY FORBIDDEN.		

NOTES



B
FS 121

REVISIONS						
SYM	DESCRIPTION	DATE	F.M.N. NO.	DRAFT	CHKD	APPD
A	FS121-4 & 5 ADDED	7.6.64	11717	WJB	<i>[Signature]</i>	<i>[Signature]</i>
B	ON FS121-5 MFG'S P/N WAS "SPECIAL" ON TMC P/N HYPHENS DELE. BET. "FS" & "121"	10.6.64	12542	WJB	@	<i>[Signature]</i>

TMC PART NO.	MFG'S PART NO.	MILITARY STANDARD NUMBER	STYLE	DIMENSIONS											MATERIAL	FINISH
				A	B	C	D	E DIA	F DIAMETER	G DIA	H	J THREADS	SLOT			
				K	L											
FS 121-1	1-S-080-093	NONE	1	.130	.080	.093	.045	.125	.125 ^{+.001} _{-.002}	3/16	NONE	NONE	NONE	NONE	BRASS	NICKEL PLATED
FS 121-2	SPECIAL	NONE	2	.130	.090	3/8	.045	.125	.112	3/16	1/4	4-40-NC-2A	NONE	NONE	BRASS	NICKEL PLATED
FS 121-3	AN3199-5A	AN3199-5A	2	.134	.055	13/16	.058	.187	.164	5/16	1/2	8-32-NC-3A	.054 .045	.075 .064	STAINLESS STEEL	PASSIVATE
FS 121-4	2-S-1-075-093	AN-3198-5	1	1/8	.075	.093	.058	.187	.164 ^{±.002}	5/16	NONE	NONE	NONE	NONE	STAINLESS STEEL	PASSIVATE
FS 121-5	1-S-090-093	NONE	1	.130	.090	.093	.045	.125	.125 ^{+.001} _{-.002}	3/16	NONE	NONE	NONE	NONE	BRASS	NICKEL PLATED

REF: FS 117

REQ'D.	ITEM	PART NUMBER	DESCRIPTION	SYMBOL
M. GELLMAN LIST OF MATERIAL				
MATERIAL		THE TECHNICAL MATERIEL CORP. MAMARONECK, NEW YORK		
FINISH		TITLE STUD, SNAPSLIDE FASTENER		
UNLESS OTHERWISE SPECIFIED DIMENSIONS ARE IN INCHES AND INCLUDE CHEMICALLY APPLIED OR PLATED FINISHES		DRAWN <i>G. Jensen</i>	DATE 8-15-63	FINAL APPROVAL <i>[Signature]</i>
		CHECKED <i>[Signature]</i>	DATE 10-30	
		ELECT. DES.	DATE	
		MECH. DES. <i>[Signature]</i>	DATE 11/4/63	
		DECIMALS .X ± .05 .XX ± .01 .XXX ± .005	FRACTIONS ± 1/64 ANGLES ± 0° 30'	FS 121 - B
		TOLERANCES		REV. LTR.

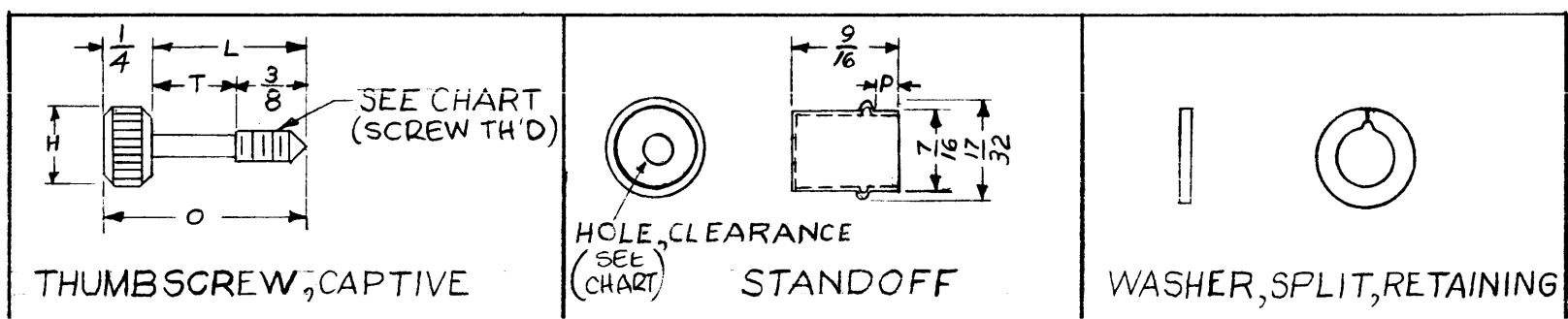
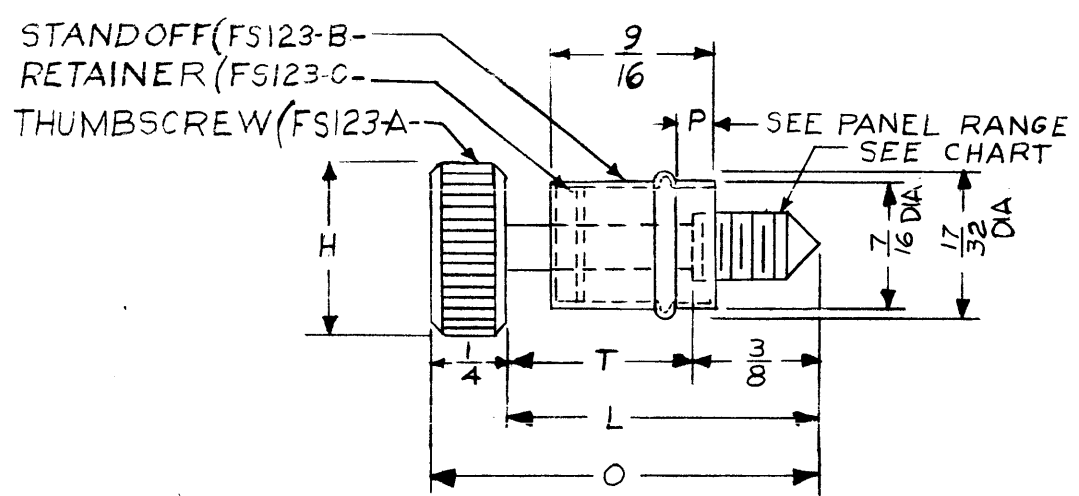
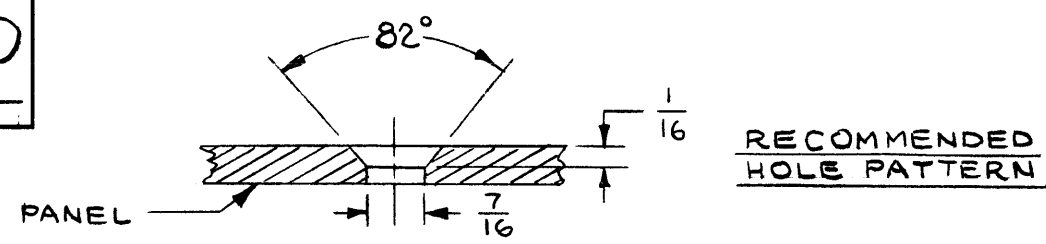
STANDARD DRAWING		
Q'TY./UNIT	MODEL USED ON	ASS'Y. NO.
SCALE NONE	CODE C	S401-214
THE CONTENTS OF THIS DRAWING ARE THE EXCLUSIVE PROPERTY OF THE TECHNICAL MATERIEL CORP. ITS UNAUTHORIZED USE OR REPRODUCTION IN WHOLE OR IN PART IS STRICTLY FORBIDDEN.		

NOTES

TMC P/N	MFG. P/N	CONSISTS OF ONE EACH			T	L	O	P	H	SCREW THREAD	PANEL RANGE
		THUMB SCREW	STANDOFF	WASHER							
FS123-1	54-47-809-56	FS-123-A1	FS-123-B1	FS-123-C1	9/16	15/16	3/16	3/16	7/16	8-32 NC-2	1/64 - 13/64

REVISIONS						
SYM	DESCRIPTION	DATE	E.M.N. NO.	DRAFT	CHKD	APPD
A	REDRAW & REVISED COMPLETELY	3-10-64	11027	A.M.	gcb	jc
B	RECOMMENDED HOLE PATTERN PICT. ADDED	10-9-64	12530	hob	@	R

FS123



TMC P/N	MFG P/N	O	L	T	H	SCREW THD.	TMC P/N	MFG P/N	P	HOLE CLEAR.	TMC P/N	MFG P/N	USED WITH
FS123-A1	54-17-309-56	3/16	15/16	9/16	7/16	8-32 NC-2	FS123-B1	58-17-309-56	3/16	8-32 NC-2	FS123-C1	58-45-524	8-32 NC-2 THD

PART	MATERIAL	FINISH
SCREW	BRASS	BRIGHT & CHROME NICKEL PLATE
STANDOFF	BRASS	BRIGHT NICKEL
RETAINER	STAINLESS STEEL 302	PASSIVATE

REQ'D.	ITEM	PART NUMBER	DESCRIPTION	SYMBOL
LIST OF MATERIAL				
MATERIAL			THE TECHNICAL MATERIEL CORP. MAMARONECK, NEW YORK	
FINISH			TITLE THUMBSCREW, CAPTIVE	
UNLESS OTHERWISE SPECIFIED DIMENSIONS ARE IN INCHES AND INCLUDE CHEMICALLY APPLIED OR PLATED FINISHES			DRAWN A. MARINO	DATE 3-10-64
TOLERANCES			CHECKED gcb	DATE 3-10-64
DECIMALS .X ± .05 .XX ± .01 .XXX ± .005			ELECT. DES.	DATE
FRACTIONS ± 1/64 ANGLES ± 0° 30'			MECH. DES.	DATE
THE CONTENTS OF THIS DRAWING ARE THE EXCLUSIVE PROPERTY OF THE TECHNICAL MATERIEL CORP. ITS UNAUTHORIZED USE OR REPRODUCTION IN WHOLE OR IN PART IS STRICTLY FORBIDDEN.			FINAL APPROVAL A.M. DATE 3-10-64 SHEET FS123	
			DATE 3-10-64 REV. LTR. B	

NOTES