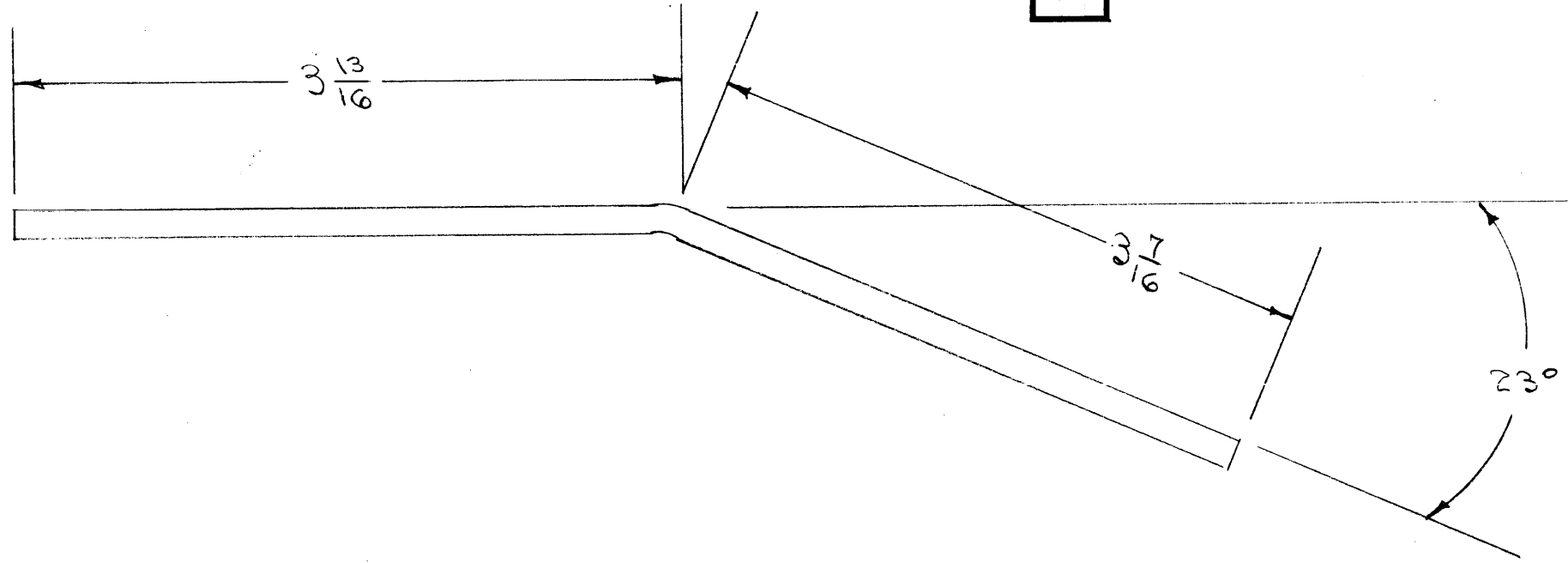


IF IT IS FOUND DESIRABLE TO CHANGE ANY TOLERANCE OR OTHER DETAIL SPECIFIED ON THIS DRAWING NOTIFY THE PURCHASER PROMPTLY.

MAXIMUM ALLOWABLE TOLERANCES HAVE BEEN DETERMINED AND DEVIATIONS WILL BE CAUSE FOR REJECTION. REMOVE ALL BURRS AND SHARP EDGES

FP-121



REQ.	ITEM	PART NO.	DESCRIPTION	SYMBOL
		3/16 DIA TUBING	THE TECHNICAL MATERIEL CORP. MAMARONECK, NEW YORK	
		COPPER	THERMOCOUPLE-WIPER R6D CONNECTOR	
		SOFT DRAWN	TAC-1	
			C.D.D. <i>ARB</i>	<i>WDE</i>
			DRAWN <i>ARB</i>	ELEC. DES. APP. MECH. DES. APP.
			CHECKED <i>ARB</i>	FINAL APPROVAL <i>WDE</i>
				FP-121

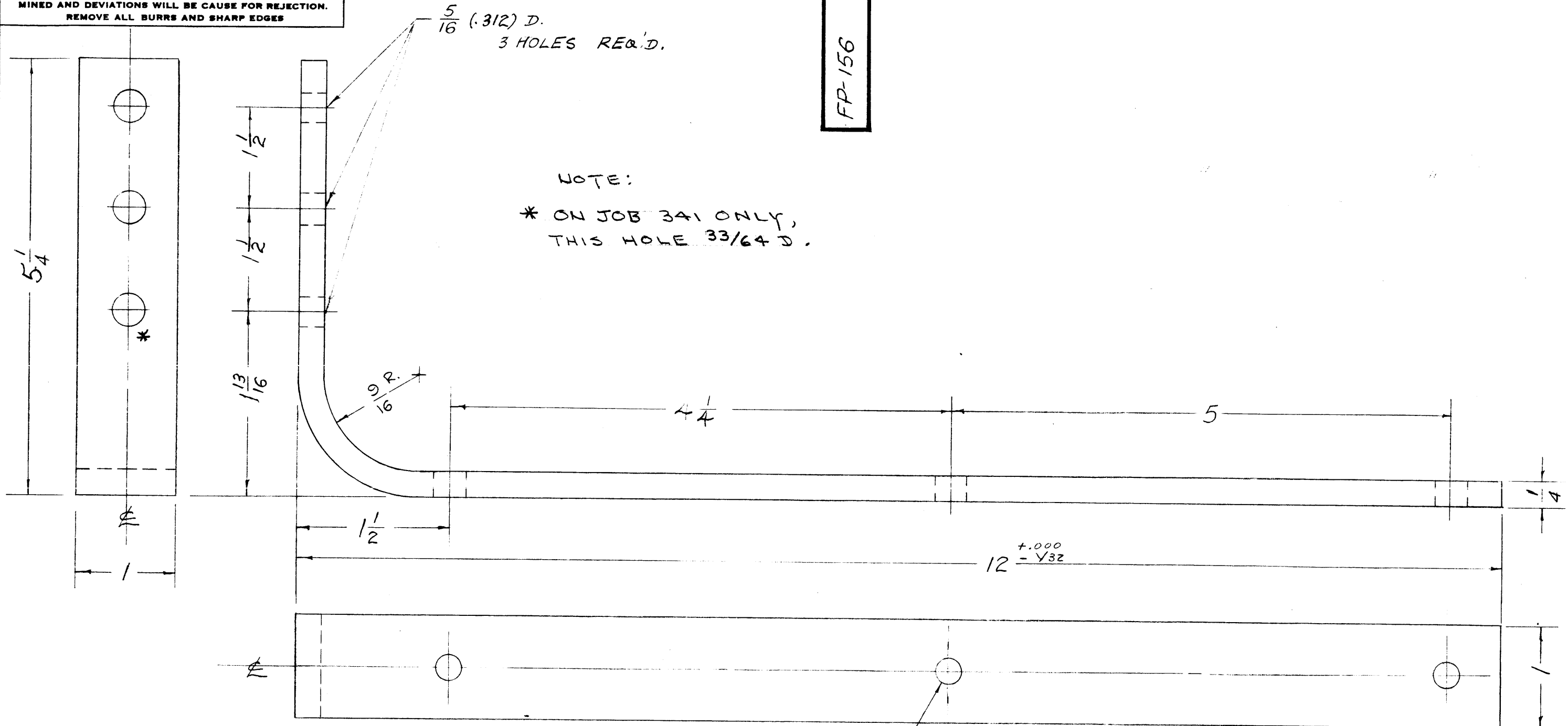
ISSUE	ITEM	CHANGED FROM	DATE	CN. NO.	DRAFTS	CHECKER	ENG. APP.
TOLERANCES		SCALE: $\frac{1}{16}$					
ALL OTHERS		DRILL, PUNCH, COMMERCIAL STOCK SIZES AND MANUFACTURERS TOLERANCES ARE NOT INCLUDED.					

1	TAC-1	132	A-727	1-5-54
REQ PER UNIT	MODEL	PROJECT NO.	ASS'Y. NO.	DATE
USED ON				

IF IT IS FOUND DESIRABLE TO CHANGE ANY TOLERANCE OR OTHER DETAIL SPECIFIED ON THIS DRAWING NOTIFY THE PURCHASER PROMPTLY.

MAXIMUM ALLOWABLE TOLERANCES HAVE BEEN DETERMINED AND DEVIATIONS WILL BE CAUSE FOR REJECTION. REMOVE ALL BURRS AND SHARP EDGES

FP-156 C



C	1	FINISH WAS SID1	19/21/58	3	HL	+	ARB
B	1	A/A WAS 5	7/23/56	2	ESP	W/D	ARB
A	1	NOTE ADDED	1/13/56	1	JLD		ARB

ISSUE	ITEM	CHANGED FROM	DATE	CN. NO.	DRAFTS	CHECKER	ENG. APP.
TOLERANCES		SCALE:					
ALL OTHERS		DEC. DIM. ±	DRILL, PUNCH, COMMERCIAL STOCK				
		FRAC. DIM. ± 1/64	SIZES AND MANUFACTURERS				
		ANGULAR DIM. ±	TOLERANCES ARE NOT INCLUDED.				

4	TER-3500-300	A-1223	2-9-61	
4	TER-500-70	A-1223	10-23-57	
4	TER-3500-70	A-1223	10-23-57	
4	TER-500	A-1223	8-21-56	
4	TER-3500	A-1223	12-1-55	
REQ. PER UNIT	MODEL	PROJECT NO.	ASS'Y. NO.	DATE

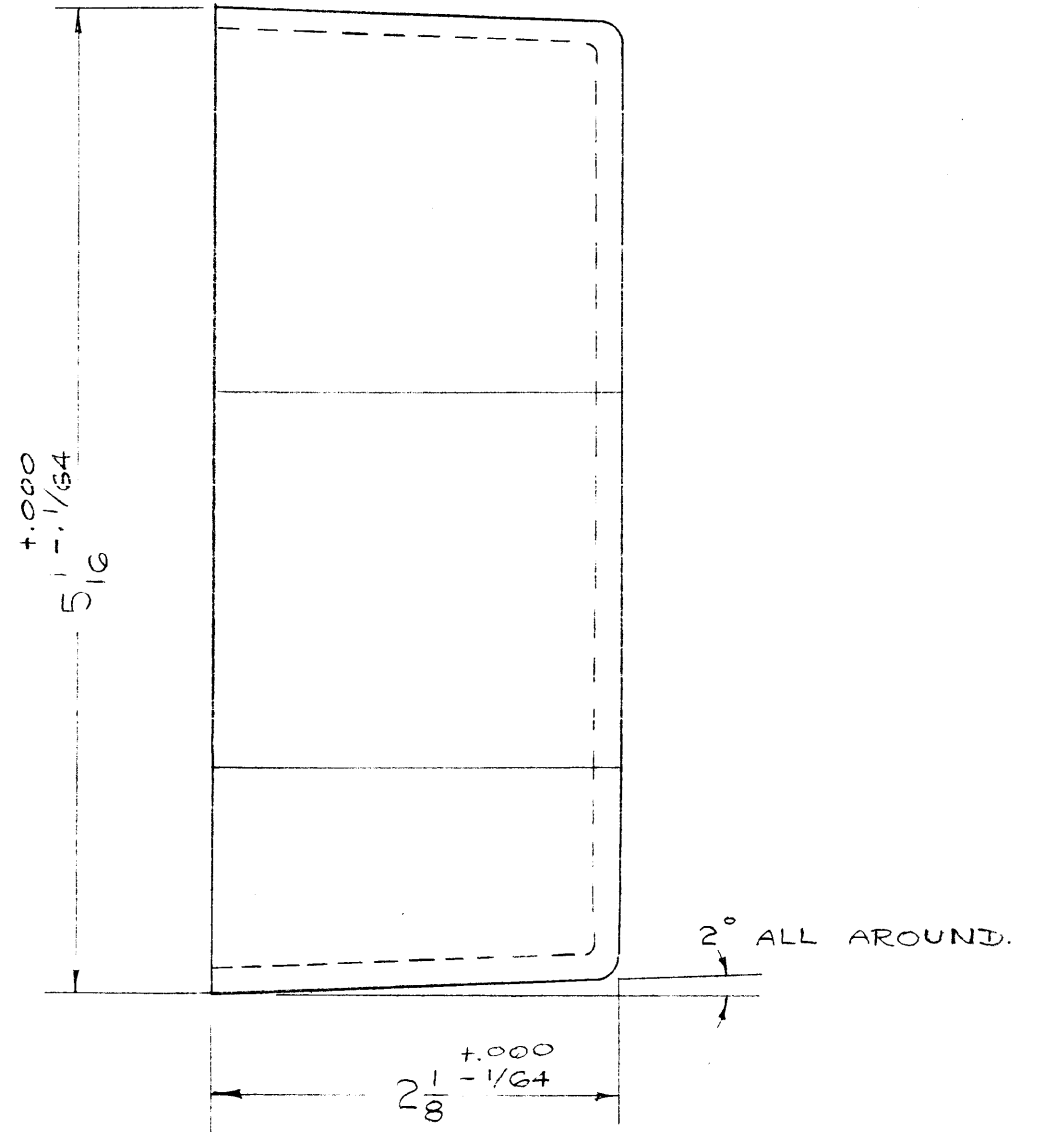
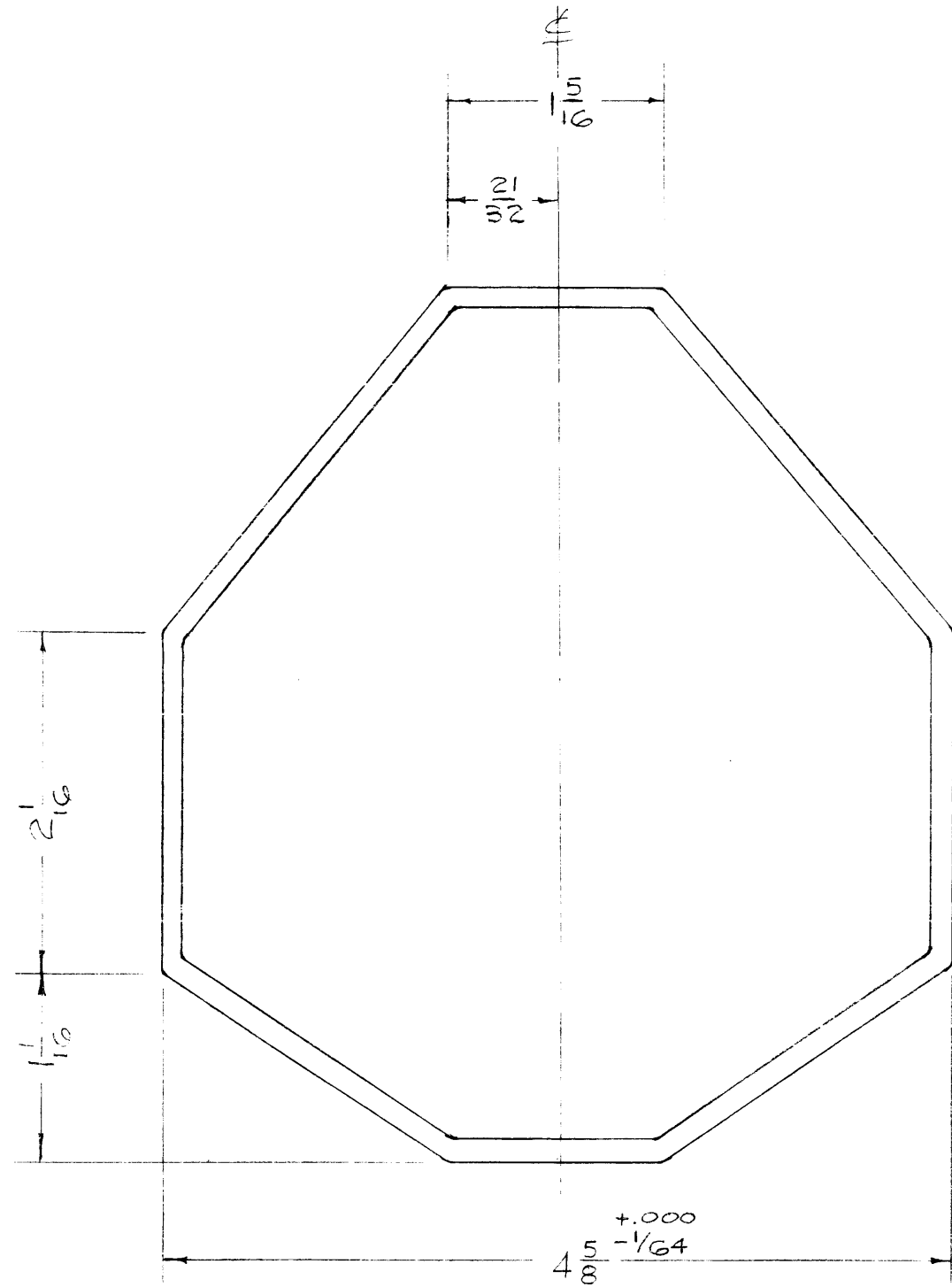
REQ.	ITEM	PART NO.	DESCRIPTION	SYMBOL
		1/4 THICK X 1	THE TECHNICAL MATERIEL CORP.	
		STOCK SIZE	MAMARONECK. NEW YORK	
	ALUMINUM	-#	CASE MOUNTING BRACKET	
	MATERIAL	WEIGHT PER PC.	TER SERIES	
		615 - T6	P. 12-1-55	ARB
		TYPE & TEMPER	W/D	
		#	DRAWN	ELEC. DES. APP.
		HEAT TREAT. SPEC.	ARB	MECH. DES. APP.
	5-114 - ZINC CHROMATE PRIMER		CHECKED	FINAL APPROVAL
	5-115 - SMOOTH GRAY SEMI-GLASS			
	FINISH & SPEC. NO.		FP-156	C

ALL DIMENSIONS UNLESS OTHERWISE SPECIFIED ARE IN INCHES.

THE TECHNICAL MATERIEL CORPORATION claims property right in the material disclosed herein. This drawing is issued in confidence for engineering information only and may not be reproduced or used to manufacture any item shown herein without permission from THE TECHNICAL MATERIEL CORPORATION to the user. This drawing is loaned for mutual assistance and is subject to recall at any time.

Property of:

THE TECHNICAL MATERIEL CORPORATION
MAMARONECK, NEW YORK



ALL FILLETS $\frac{1}{16}$ R.
ALL ROUNDS $\frac{3}{16}$ R.

ISSUE	ITEM	CHANGED FROM	DATE	CH. NO.	DRAFTS	CHECKER	ENG. APP.
TOLERANCES			SCALE:				
DEC. DIM. \pm			MAXIMUM ALLOWABLE TOLERANCES HAVE BEEN DETERMINED AND ANY DEVIATIONS WILL BE CAUSE FOR REJECTION. REMOVE ALL BURRS AND SHARP EDGES				
FRAC. DIM. $\pm \frac{.000}{164}$							
ANGULAR DIM. \pm							

REQ. PER UNIT	MODEL	PROJECT NO.	ASS'Y. NO.	DATE
				3-26-66
USED ON				

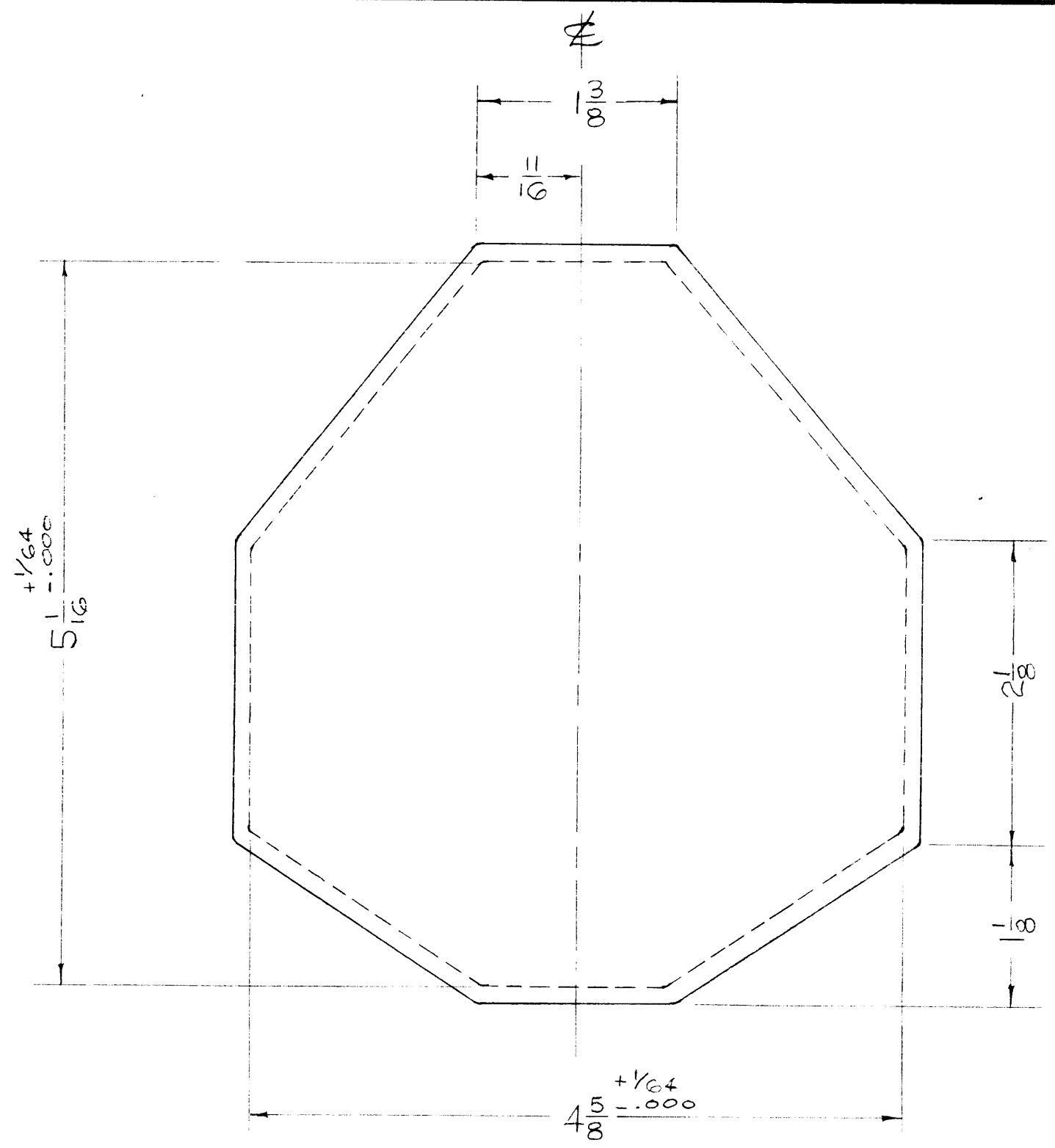
REQ. ITEM	PART NO.	DESCRIPTION	SYMBOL
		THE TECHNICAL MATERIEL CORP. MAMARONECK, NEW YORK	
STOCK SIZE		CASE MOLDING	
MATERIAL			
		13 3-26-66	
TYPE & TEMPER	HEAT TREAT. SPEC.	DRAWN	CHECKED
FINISH & SPEC. NO.		ELEC. DES. APP.	MECH. DES. APP.

FP-157

PROPERTY OF TECHNICAL MATERIEL CORP. DRAWING

THIS DRAWING IS THE PROPERTY OF TECHNICAL MATERIEL CORP. ANY REPRODUCTION OR USE OF THIS DRAWING WITHOUT THE WRITTEN PERMISSION OF TECHNICAL MATERIEL CORP. IS PROHIBITED. THIS DRAWING IS TO BE USED FOR REFERENCE ONLY AND MAY NOT BE REPRODUCED OR USED FOR ANY OTHER PURPOSE WITHOUT THE WRITTEN PERMISSION OF TECHNICAL MATERIEL CORP. ASSISTANCE AND IS SUBJECT TO RECALL AT ANY TIME.

Property of:
 THE TECHNICAL MATERIEL CORPORATION
 MAMARONECK, NEW YORK



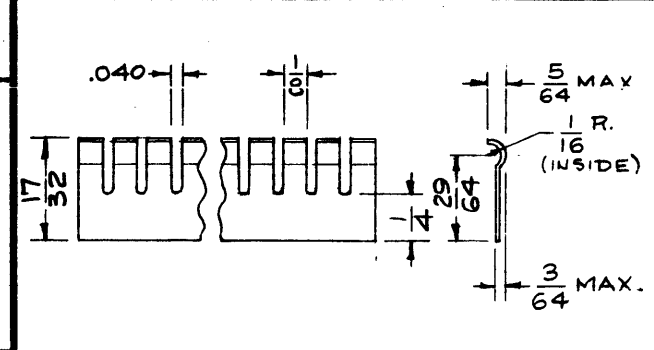
ALL FILLETS 1/16 R.
 ALL ROUNDS 3/16 R.

ISSUE	ITEM	CHANGED FROM	DATE	CH. NO.	DRAFTS	CHECKER	ENG. APP.
TOLERANCES			SCALE:				
DEC. DIM. ±			MAXIMUM ALLOWABLE TOLERANCES HAVE				
FRAC. DIM. ± 1/64			BEEN DETERMINED AND ANY DEVIATIONS				
ANGULAR DIM. ±			WILL BE CAUSE FOR REJECTION.				
			REMOVE ALL BURRS AND SHARP EDGES				

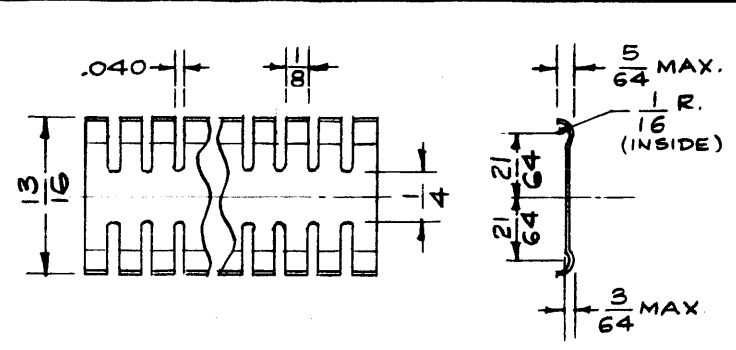
REQ. PER UNIT	MODEL	PROJECT NO.	ASS'Y. NO.	DATE
				3-26-56
USED ON				

REQ. ITEM	PART NO.	DESCRIPTION	SYMBOL
		THE TECHNICAL MATERIEL CORP.	
		MAMARONECK, NEW YORK	
STOCK SIZE		COVER MOLDING	
FIBERGLAS			
MATERIAL			
TYPE & TEMPER		DRAWN	CHECKED
HEAT TREAT. SPEC.			
FINISH & SPEC. NO.			
ELEC. DES. APP.			
MECH. DES. APP.		FP-158	

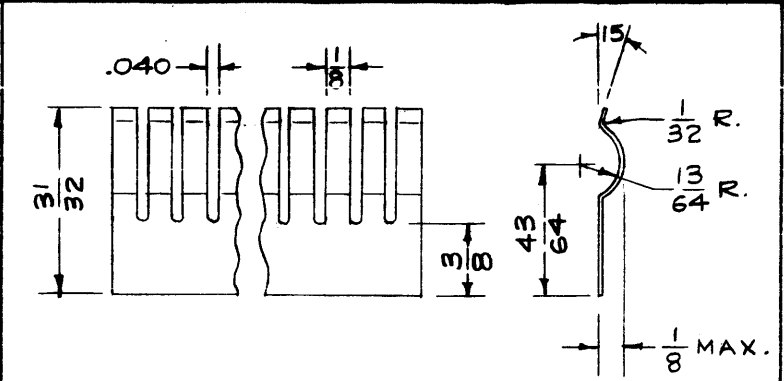
FP-160 B



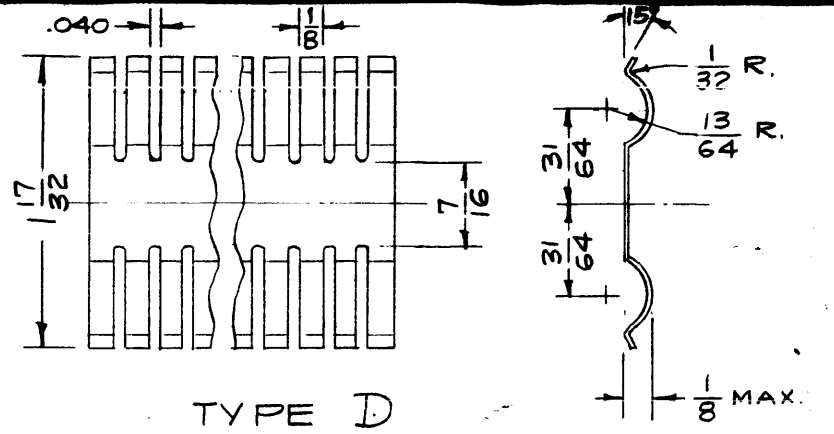
TMC TYPE A



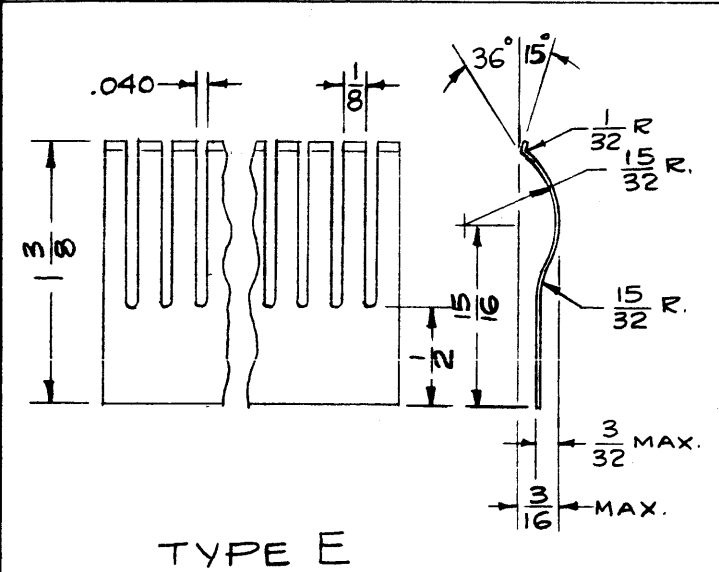
TYPE B



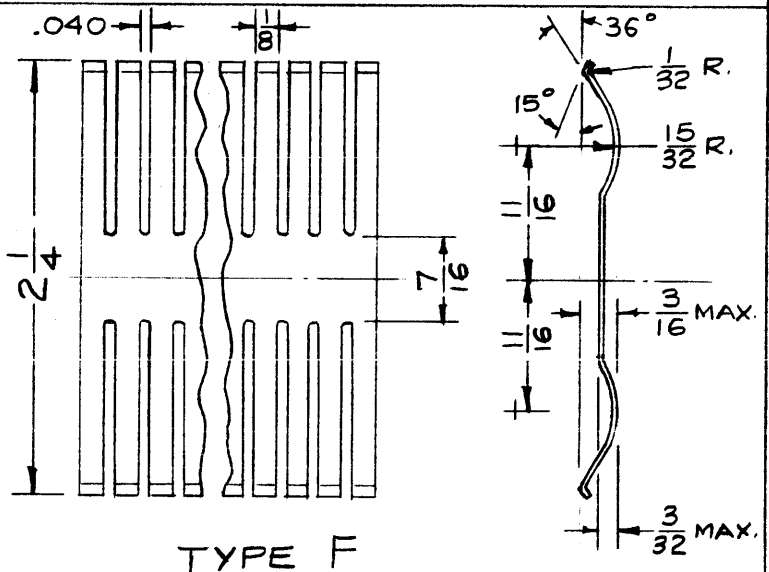
TYPE C



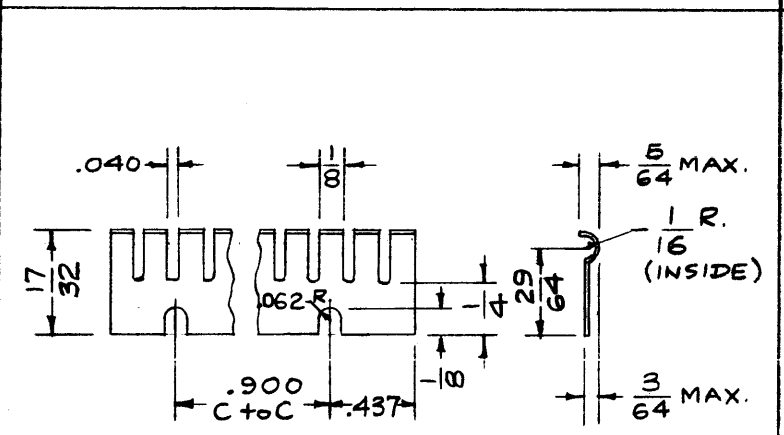
TYPE D



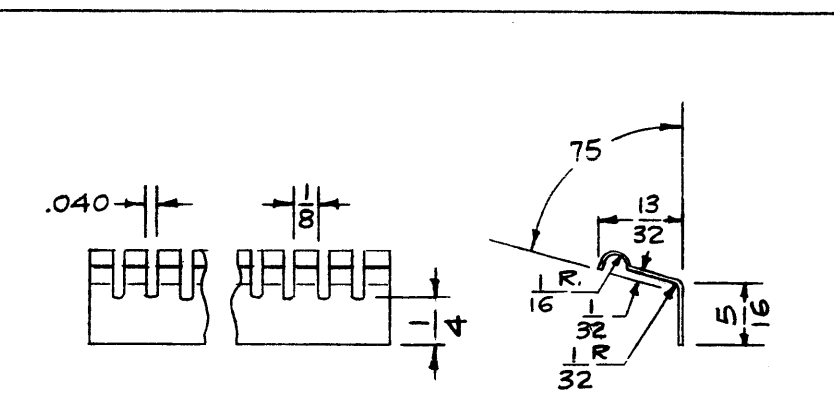
TYPE E



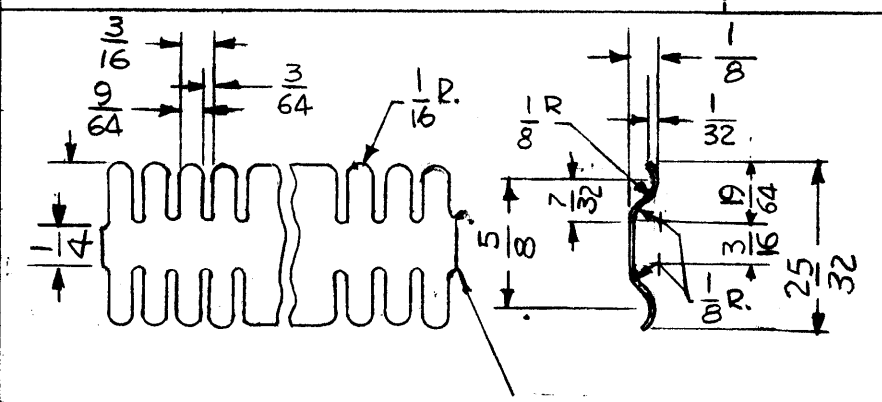
TYPE F



TYPE G



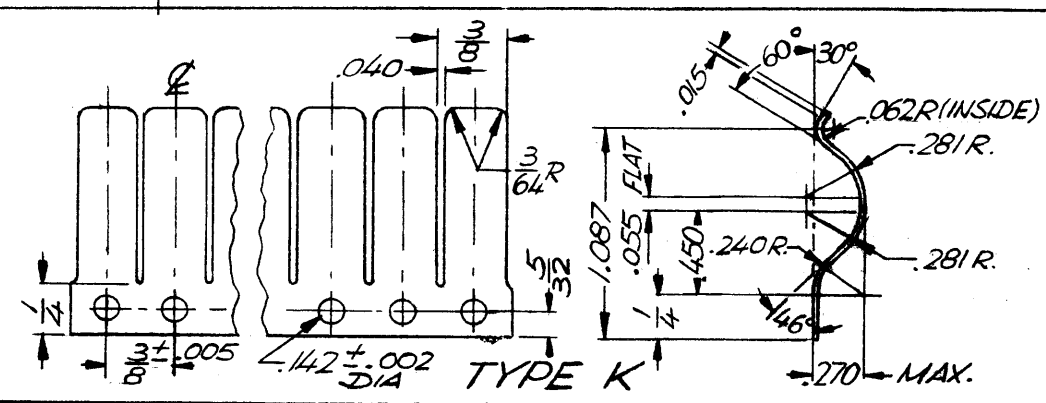
TYPE H



TYPE J

TMC TYPE	MFR'S TYPE	MFR'S CODE	MATL THK
A	CF-100	*A	.010
B	CF-200	*A	.010
C	CF-300	*A	.010
D	CF-400	*A	.010
E	CF-500	*A	.010
F	CF-600	*A	.010
G	CF-700	*A	.010
H	CF-800	*A	.010
J	97D-15	#B	.005±.0004
K	97D-438	#B	.005±.0004

FINISH CODE	FINISH
N	SLOTTED, FORMED, HEAT TREATED, NO PLATING
P	SLOTTED, FORMED, HEAT TREATED, SILVER PLATED



EXAMPLES:
 FP-160 G 5.00S = Contact, Type G, 5" Long, Silver Plated
 FP-160 B 2.25 N = Contact, Type B, 2-1/4" Long, No Plating

NOMENCLATURE TO BE IN THE FOLLOWING FORM

FP-160 A "L" N

TMC DWG NO. TMC TYPE (PICTORIALS) LENGTH REQ. (INCHES) FINISH SEE CHART

NOTES: 1 - MINIMUM CURVATURE RADIUS = 3/4"
 2 - *A DENOTES S401 - 23
 3 - #B DENOTES S401 - 26

Purchasing Info: Order in lengths of one foot, two feet, or three feet with finish specified in Part No.

ISSUE	ITEM	CHANGED FROM	DATE	CH. NO.	DRAFTS	CHECKER	ENG. APP.
B							
A							

TYPE K ADDED 1/3/69 19184 K.H. JAD FB
 TYPE J, MFR'S CODE No. 2 & NOTES 2 & 3 ADDED 5-9-67 18173 G.D.L. JAD FB

TOLERANCES: DEC. DIM. ±, FRAC. DIM. ±, ANGULAR DIM. ±

SCALE: —

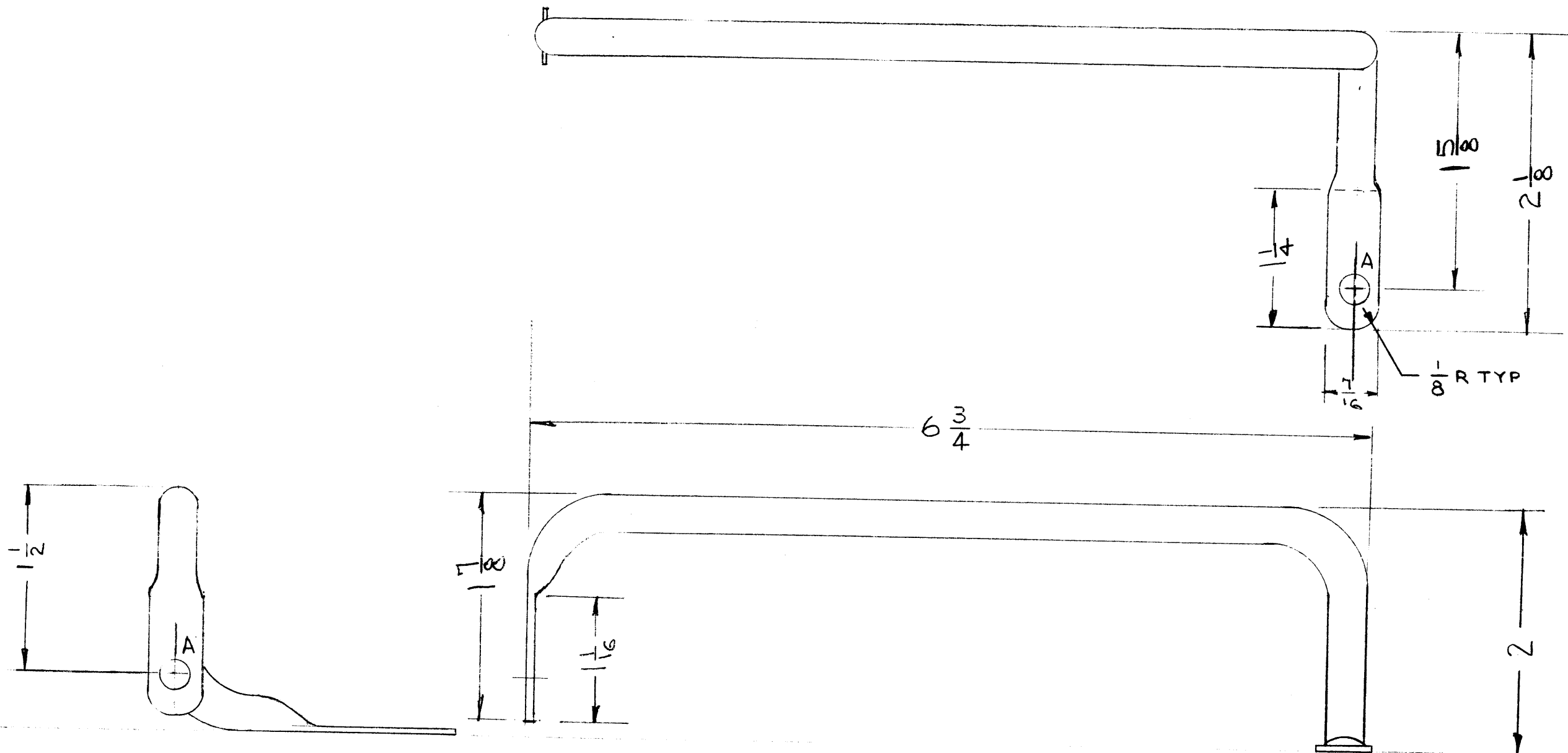
MAXIMUM ALLOWABLE TOLERANCES HAVE BEEN DETERMINED AND ANY DEVIATIONS WILL BE CAUSE FOR REJECTION. REMOVE ALL BURRS AND SHARP EDGES

STANDARD DRAWING

REQ. PER UNIT	MODEL	PR JECT NO.	ASS'Y. NO.	DATE

USED ON

REQ. ITEM	PART NO.	DESCRIPTION	SYMBOL
SEE CHART.		THE TECHNICAL MATERIEL CORP. MAMARONECK, NEW YORK	
STOCK SIZE Non-Ferrous Spring Alloy		CONTACT, ELECTRICAL	
MATERIAL N			
TYPE & TEMPER	HEAT TREAT. SPEC.	DRAWN	CHECKED
See Chart		JAD	JAD
FINISH & SPEC. NO.		FP-160 B	



NOTICE TO PERSONS RECEIVING THIS DRAWING

THE TECHNICAL MATERIEL CORPORATION claims proprietary right in the material disclosed herein. This drawing is issued in confidence for engineering information only and may not be reproduced or used to manufacture anything shown hereon without permission from THE TECHNICAL MATERIEL CORPORATION to the user. This drawing is loaned for mutual assistance and is subject to recall at any time.

Property of:

THE TECHNICAL MATERIEL CORPORATION
MAMARONECK, NEW YORK

A - 1/64 DIA

2 HOLES

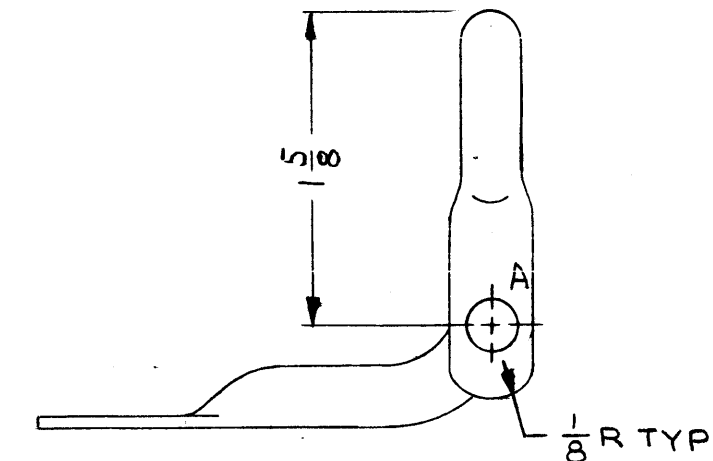
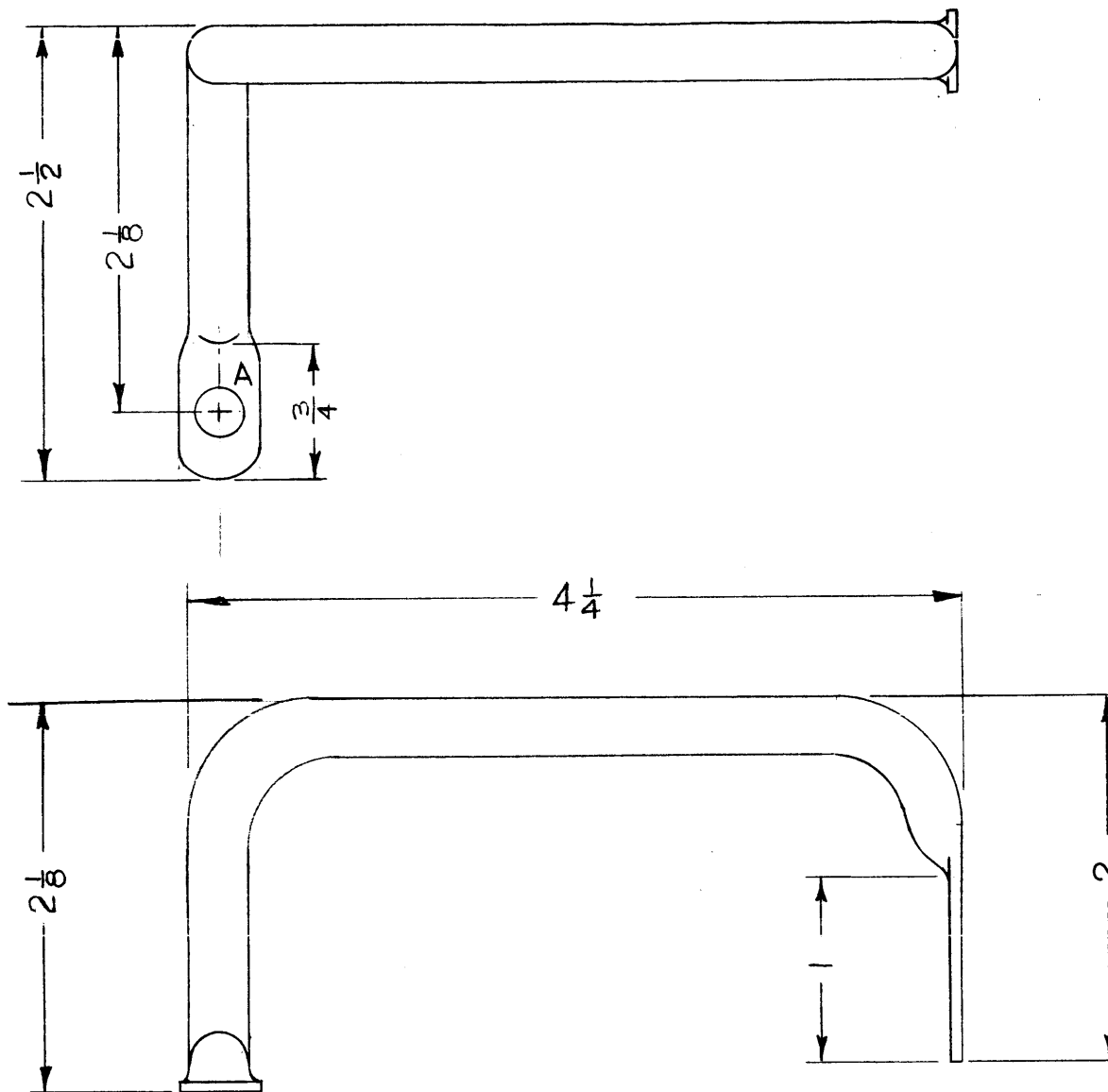
* PLATING & FINISHING TO BE COMPLETED BEFORE PIECE IS FABRICATED. CORNERS & EDGES TO BE SMOOTH.

C		DELETED #53 DR HOLES; ADDED PLATING & FIN. NOTE & SPECS		15711	JL	<i>[Signature]</i>	<i>[Signature]</i>
B	1	#53 DR. HOLES ADDED (2 PL)	2-18-65	13535	SL	<i>[Signature]</i>	<i>[Signature]</i>
A	1	DIM 6-3/4 WAS 7 1/8	7-12-62	6845	<i>[Signature]</i>	<i>[Signature]</i>	<i>[Signature]</i>
ISSUE	ITEM	CHANGED FROM	DATE	CH. NO.	DRAFTS	CHECKER	ENG. APP.
TOLERANCES			SCALE:				
DEC. DIM. ±			MAXIMUM ALLOWABLE TOLERANCES HAVE BEEN DETERMINED AND ANY DEVIATIONS WILL BE CAUSE FOR REJECTION. REMOVE ALL BURRS AND SHARP EDGES				
FRAC. DIM. ±							
ANGULAR DIM. ±							

1	GPT-10K	AT-100		3-21-55
REQ. PER UNIT	MODEL	PROJECT NO.	ASSY. NO.	DATE
USED ON				

REQ. ITEM	PART NO.	DESCRIPTION		SYMBOL
	5/16 OD	THE TECHNICAL MATERIEL CORP.		
	STOCK SIZE	MAMARONECK, NEW YORK		
	COPPER TUBING *	CONNECTOR STRAP # 3		
	MATERIAL			
	SOFT			
	TYPE & TEMPER	HEAT TREAT. SPEC.	<i>[Signature]</i>	<i>[Signature]</i>
	SILVER PLATE .0008 PER S245	CLEAR IRIDIUM PER S423 *	DRAWN	CHECKED
			<i>[Signature]</i>	<i>[Signature]</i>
	FINISH & SPEC. NO.	ELEC. DES. APP.	MECH. DES. APP.	FP-166 C

FP-167 D



PROPERTY OF THE TECHNICAL MATERIEL CORPORATION

THE TECHNICAL MATERIEL CORPORATION claims
 property right in the material disclosed herein.
 This drawing is issued in confidence for engineering
 information only and may not be reproduced or used
 to manufacture anything shown hereon without per-
 mission from THE TECHNICAL MATERIEL CORPORA-
 TION to the user. This drawing is loaned for mutual
 assistance and is subject to recall at any time.

A - 17/64 DIA 2 REQ.

* PLATING & FINISHING TO BE COMPLETED
 BEFORE PIECE IS FABRICATED. CORNERS
 & EDGES TO BE SMOOTH.

Property of:
 THE TECHNICAL MATERIEL CORPORATION
 MAMARONECK, NEW YORK

ISSUE	ITEM	CHANGED FROM	DATE	CH. NO.	DRAFTS	CHECKER	ENG. APP.
D		DELETED * 53 DR HOLES; ADD DR PLATING B. FAB. NOTE & SPECS	2/3/66	15711	JL	<i>[Signature]</i>	<i>[Signature]</i>
C	1	2 # 53 DR. HOLES ADDED.	2-18-65	13535	RY	<i>[Signature]</i>	<i>[Signature]</i>
B	2	DIM 2 1/8 WAS 1 1/8	4-18-63	8753	RY	<i>[Signature]</i>	<i>[Signature]</i>
	1	DIM 4 1/4 WAS 4 3/4					
A	4	DIM 2 - 1/2 WAS 2 - 1/8, 2" WAS 1 1/2	7-12-62	6845	<i>[Signature]</i>	<i>[Signature]</i>	<i>[Signature]</i>
	3	2 1/8 WAS 1 3/4, 4 3/4 WAS 5"					
	2	DIM 1 - 1/8" ADDED					
	1	2" DIM. DELETED					

TOLERANCES		SCALE:	
DEC. DIM. ±		MAXIMUM ALLOWABLE TOLERANCES HAVE BEEN DETERMINED AND ANY DEVIATIONS WILL BE CAUSE FOR REJECTION.	
FRAC. DIM. ±		REMOVE ALL BURRS AND SHARP EDGES	
ANGULAR DIM. ±			

REQ. PER UNIT	MODEL	PROJECT NO.	ASS'Y. NO.	DATE
1	GPT-10K	AT-100		
USED ON				

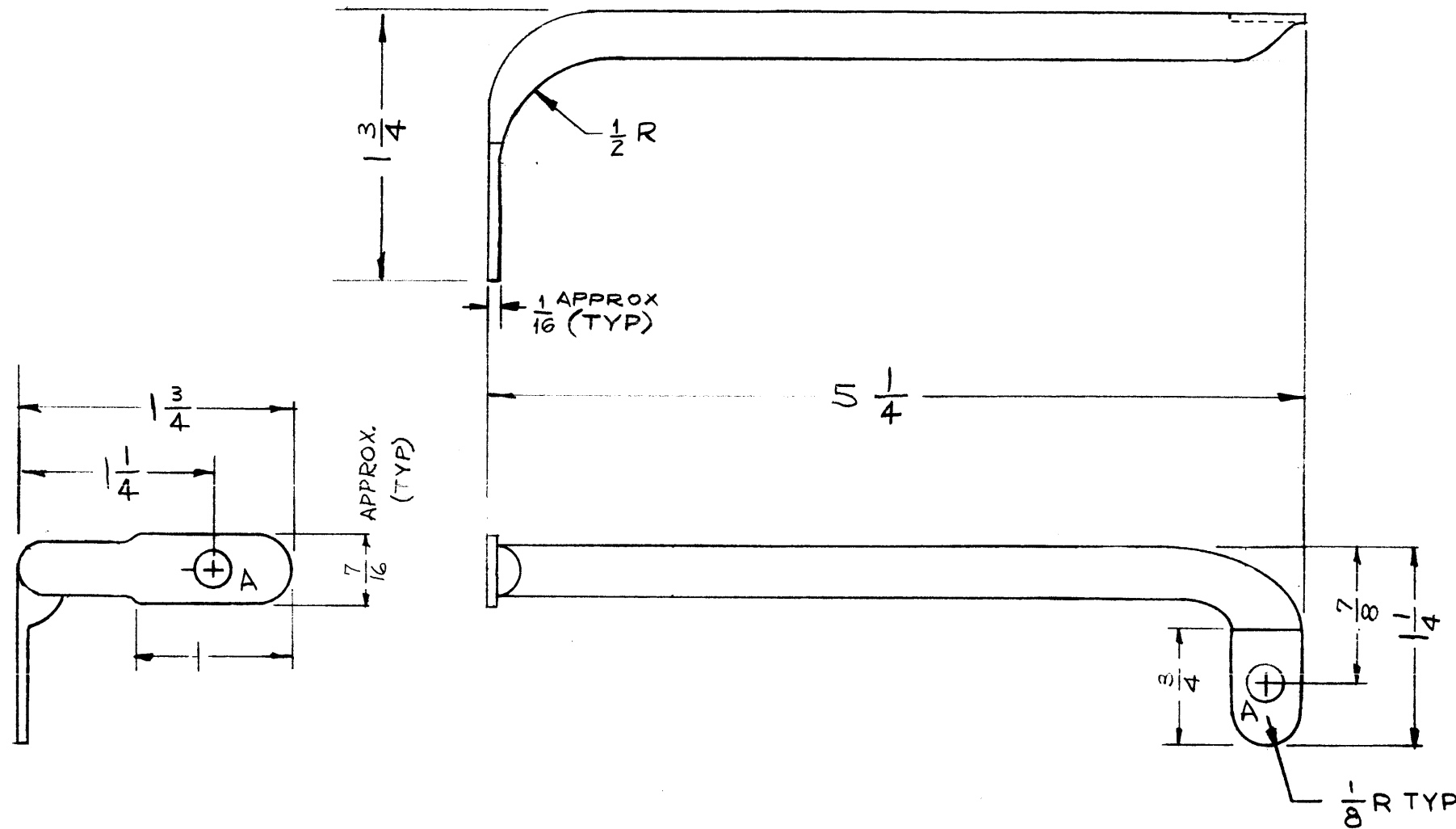
REQ. ITEM	PART NO.	DESCRIPTION		SYMBOL
	5/16 OD	THE TECHNICAL MATERIEL CORP. MAMARONECK, NEW YORK		
	STOCK SIZE			
	COPPER TUBING *	CONNECTOR STRAP # 4		
	MATERIAL:			
	SOFT	<i>[Signature]</i>	<i>[Signature]</i>	
	TYPE & TEMPER	HEAT TREAT. SPEC.	DRAWN	CHECKED
	SILVER PLATE .0003 PER S246		<i>[Signature]</i>	<i>[Signature]</i>
	CLEAR IRIDITE PER S423 *			
	FINISH & SPEC. NO.	ELEC. DES. APP.	MECH. DES. APP.	
				FP-167 D

RECEIVED THIS DRAWING

THE TECHNICAL MATERIEL CORPORATION claims proprietary right in the material disclosed hereon. This drawing is issued in confidence for engineering information only and may not be reproduced or used to manufacture anything shown hereon without permission from THE TECHNICAL MATERIEL CORPORATION to the user. This drawing is loaned for mutual assistance and is subject to recall at any time.

Property of:

THE TECHNICAL MATERIEL CORPORATION
MAMARONECK, NEW YORK



HOLES

A - 17/64 DIA 2 REQ

* PLATING & FINISHING TO BE COMPLETED BEFORE PIECE IS FABRICATED. CORNERS & EDGES TO BE SMOOTH.

ISSUE	ITEM	CHANGED FROM	DATE	CH. NO.	DRAFTS	CHECKER	ENG. APP.
E		DELETED 53 DR HOLES; ADDED PLATING & FAB. NOT & SPECS	2-8-66	15711	JL	JCS	MM
D	1	#53 DR. HOLES ADD. (2 PL.)	2-18-65	13535	92	JCS	JCS
C	1	COMPLETELY REVISED	12-27-62	7910			
B	1	DIM. CLARIFIED	7-12-62	6845			
A	1	DIM 1, 7/16, 1/2, 1/8, 7/32 ADDED	10/11/60	3169	RD	JCS	JCS

REQ. ITEM	PART NO.	DESCRIPTION	SYMBOL
5/16 O.D.		THE TECHNICAL MATERIEL CORP. MAMARONECK, NEW YORK	
STOCK SIZE			
COPPER TUBING *		CONNECTOR STRAP #5	
MATERIAL			
SOFT			
TYPE & TEMPER	HEAT TREAT. SPEC.	DRAWN	CHECKED
SILVER PLATE .0003 PER S245		JCS	JCS
CLEAR IRIDITE PER S423 *			
FINISH & SPEC. NO.		ELEC. DES. APP.	MECH. DES. APP.

REQ. PER UNIT	MODEL	PROJECT NO.	ASS'Y. NO.	DATE
1	APT-10K	AT-100		3-21-59

5

4

3

2

1

REVISIONS							
E.M.N. NO.	DRAFT	CHKD	ZONE	LTR	DESCRIPTION	DATE	APPROVED
	CDL			F	REDRAWN WITHOUT CHANGE	4-1-91	

D

D

C

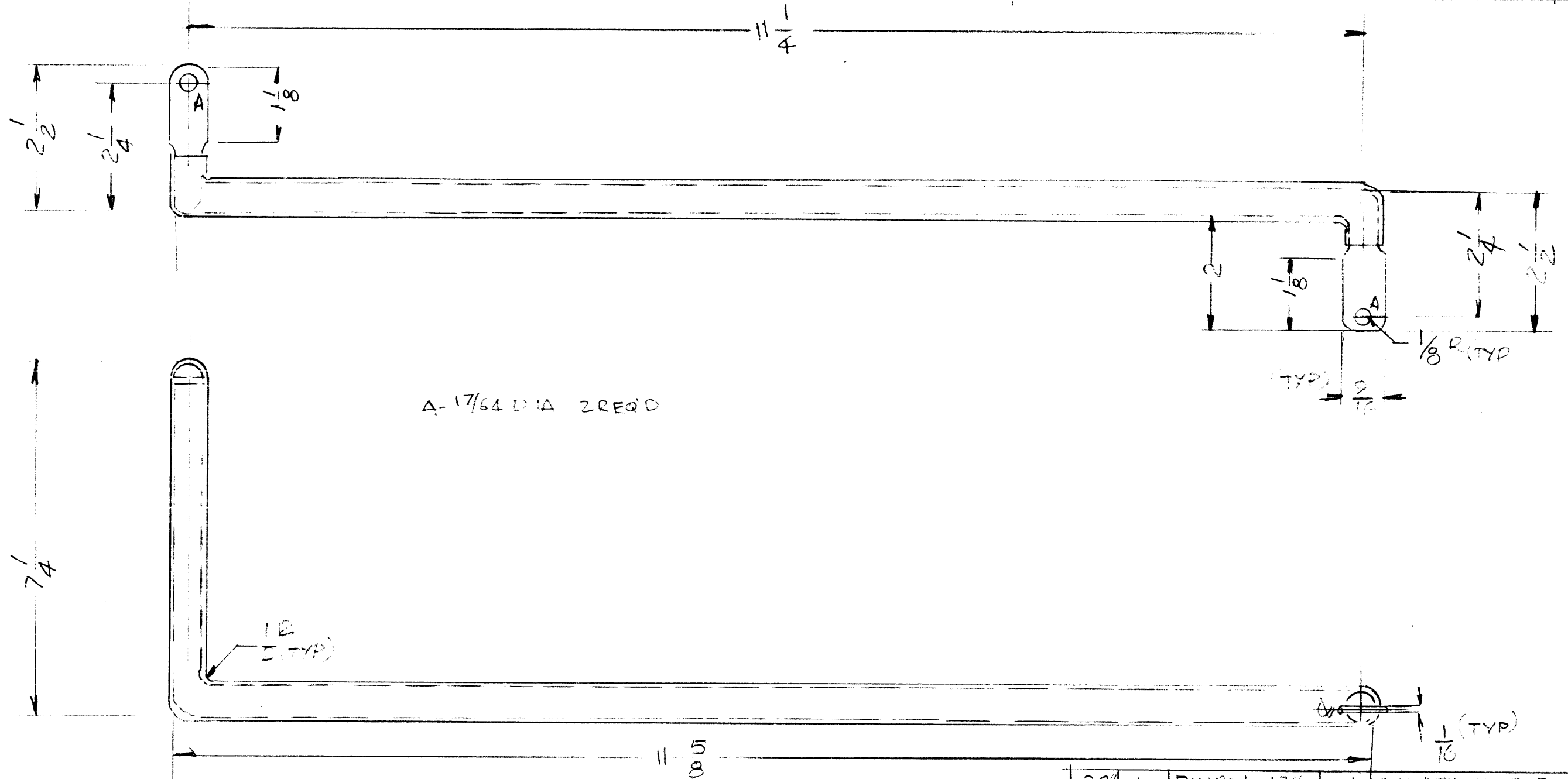
C

B

B

A

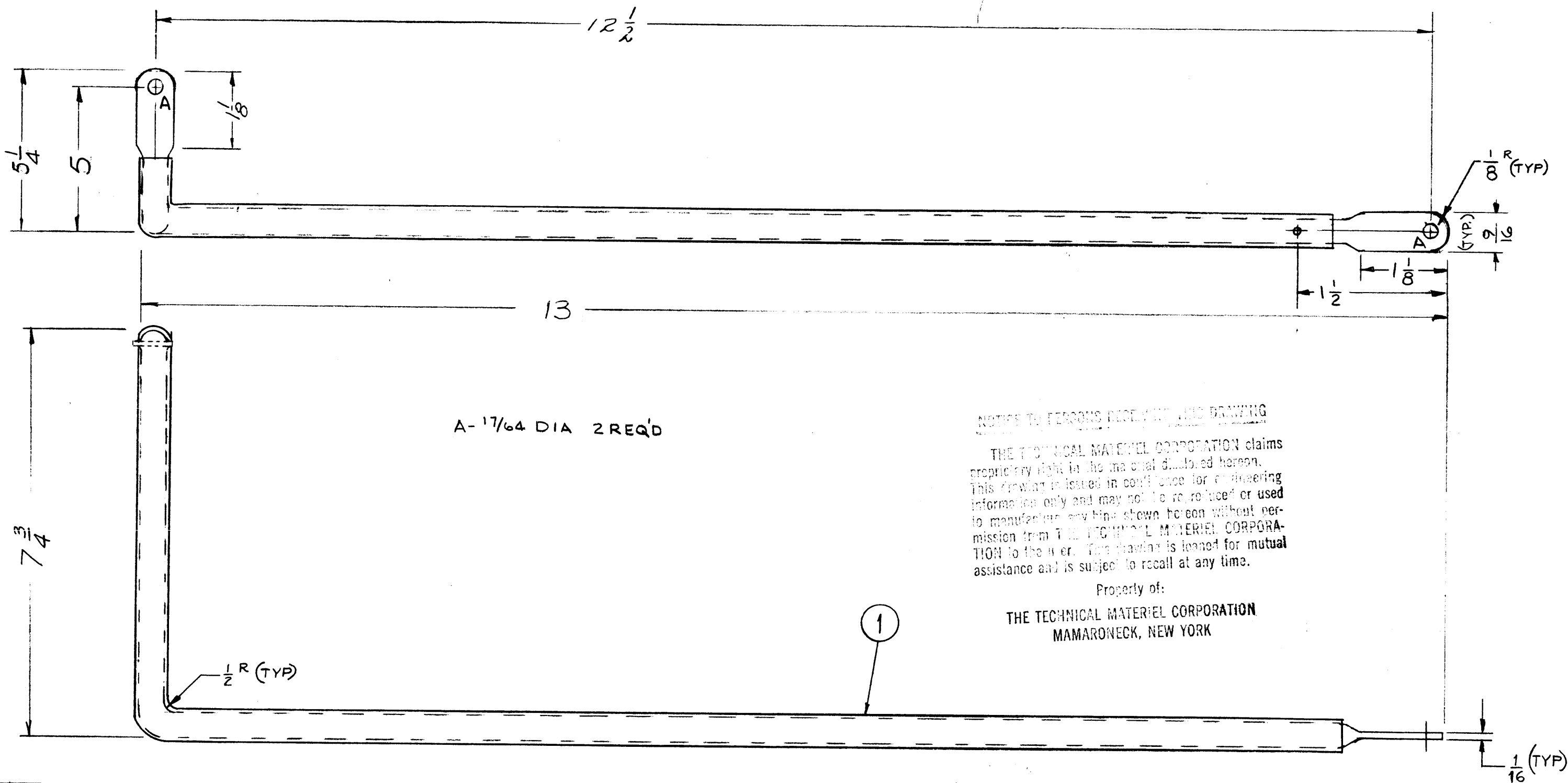
A



QTY / UNIT	MODEL USED ON	ASS'Y NO.	DECIMALS	FRACTIONS	FINAL APPROVAL	DATE	THE TECHNICAL MATERIEL CORP.			
1	GPT-10KW	BLOWER DECK	.X ± .05	1/64			MAMARONECK, NEW YORK			
APPLICATION			.XX ± .01	TOLS. ANGLES	MECH. DES.	DATE	PA FILAMENT CONNECTOR			
CODE			.XXX ± .005	0°-30'	ELECT. DES.	DATE	RIGHT			
MATERIAL			UNLESS OTHERWISE SPECIFIED DIMENSIONS ARE IN INCHES AND INCLUDE CHEMICALLY APPLIED OR PLATED FINISHES		CHECKED	DATE	SIZE	CODE IDENT. NO.	DWG NO.	ISSUE
NOTICE TO PERSONS RECEIVING THIS DRAWING			3/2 1/2		DRAWN	DATE	B	82679	FP 169	F
THE TECHNICAL MATERIEL CORPORATION claims proprietary right in the material disclosed hereon. This drawing is issued in confidence for engineering information only and may not be reproduced or used to manufacture anything shown hereon without permission from THE TECHNICAL MATERIEL CORPORATION to the user. This drawing is loaned for mutual assistance and is subject to recall at any time.			CORRECTION TUBING			4-1-91	SCALE		SHEET	OF
			FINISH SILVER PLATE							
			0003 DEB 5245							
			CLEAR IDENTIFIERS 433							

* PLATING & FINISHING TO BE COMPLETED BEFORE PIECE IS FABRICATED. CONTACT WITH TUBING TO BE COMPLETED.

FP-170 F



A-17/64 DIA 2 REQ'D

NOTICE TO PERSONS RECEIVING THIS DRAWING

THE TECHNICAL MATERIEL CORPORATION claims proprietary right in the material disclosed hereon. This drawing is issued in confidence for engineering information only and may not be reproduced or used to manufacture anything shown hereon without permission from THE TECHNICAL MATERIEL CORPORATION to the user. This drawing is loaned for mutual assistance and is subject to recall at any time.

Property of:
THE TECHNICAL MATERIEL CORPORATION
MAMARONECK, NEW YORK

PLATING & FINISHING TO BE COMPLETED BEFORE PIECE IS FABRICATED. CORNERS & EDGES TO BE SMOOTH.

F		1/8 R WAS 3/32; DELETED #30R; ADDED PLATING & FAB. NOTE & SPECS.	2-3-66	15711	JL	<i>[Signature]</i>	
E	1	#53 DR. HOLES ADD. (2 PL)	2-18-65	13535	<i>[Signature]</i>	<i>[Signature]</i>	
D	1	17/64 DIA. ADDED TO (2) HOLES	2-2-63	8114	<i>[Signature]</i>	<i>[Signature]</i>	
C	1	ITEM 1 ADDED	7-2-62	6845	<i>[Signature]</i>	<i>[Signature]</i>	
B	1	DIM. 13 WAS 12 3/4	11/3/60	3362	<i>[Signature]</i>	<i>[Signature]</i>	
A	1	DIM 1/2 R 3/32 1/16 9/16 ADDED	10/12/60	3169	<i>[Signature]</i>	<i>[Signature]</i>	
ISSUE	ITEM	CHANGED FROM	DATE	CH. NO.	DRAFTS	CHECKER	ENG. APP.
TOLERANCES			SCALE: <i>[Signature]</i>				
DEC. DIM. ±			MAXIMUM ALLOWABLE TOLERANCES HAVE BEEN DETERMINED AND ANY DEVIATIONS WILL BE CAUSE FOR REJECTION. REMOVE ALL BURRS AND SHARP EDGES				
FRAC. DIM. ± 1/32							
ANGULAR DIM. ±							

1	QPT-10KW	BLOWER DECK	3-21-59
REQ. PER UNIT	MODEL	PROJECT NO.	DATE
USED ON			

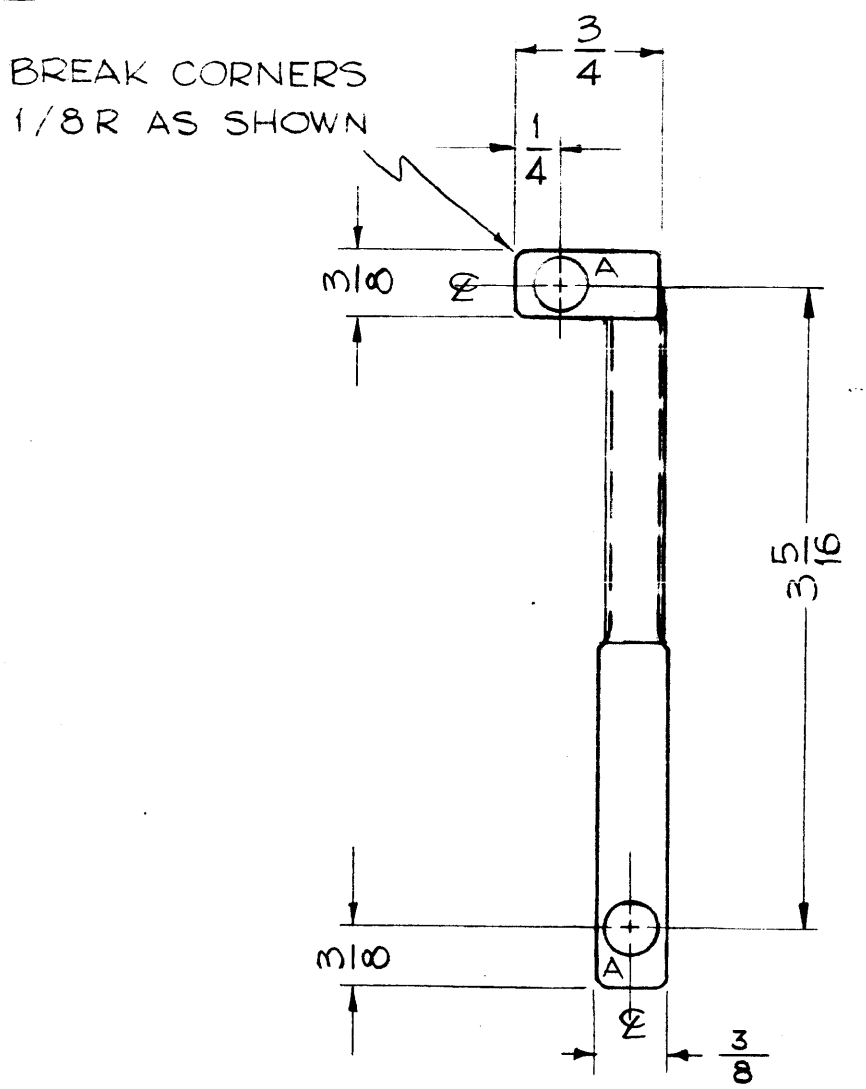
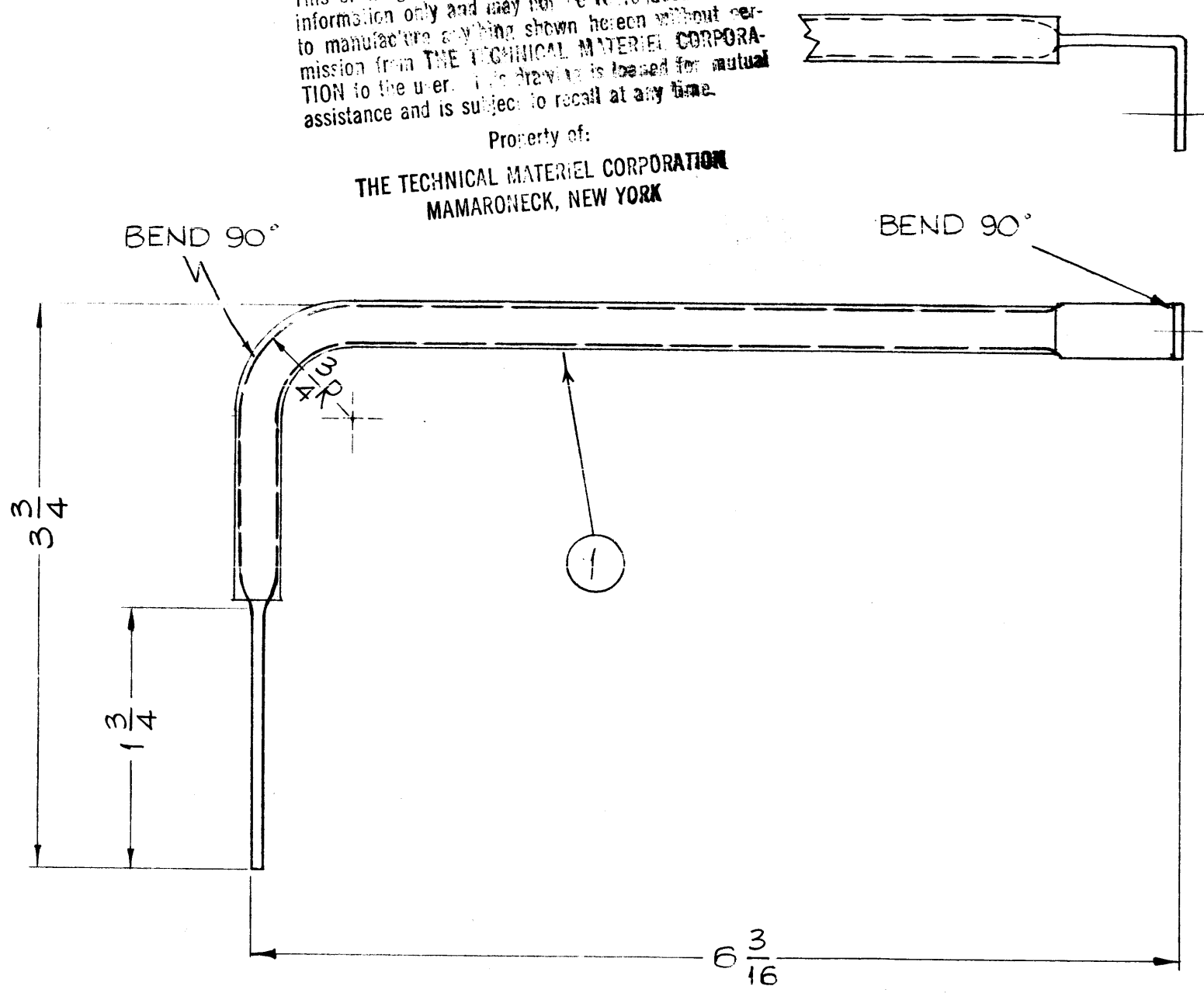
22" 1	PX-100-1-.438	INSULATION, SLEEVING	
REQ. ITEM	PART NO.	DESCRIPTION	SYMBOL
3/8 O.D.		THE TECHNICAL MATERIEL CORP. MAMARONECK, NEW YORK	
STOCK SIZE			
COPPER TUBING *		PA FILAMENT CONNECTOR, LEFT	
MATERIAL			
SOFT		<i>[Signature]</i>	<i>[Signature]</i>
TYPE & TEMPER		HEAT TREAT. SPEC.	
SILVER PLATE .0003 PERS 5246		CLEAR IRIDITE PERS 5423 *	
FINISH & SPEC. NO.		ELEC. DES. APP.	MECH. DES. APP.
		<i>[Signature]</i>	<i>[Signature]</i>
		FP-170	F

FP 180 D

HOLES ~
A ~ 1/4 DIA. 2REQ.

NOTICE TO PERSONS RECEIVING THIS DRAWING
THE TECHNICAL MATERIEL CORPORATION claims proprietary right in the material disclosed herein. This drawing is issued in confidence for engineering information only and may not be reproduced or used to manufacture anything shown herein without permission from THE TECHNICAL MATERIEL CORPORATION to the user. This drawing is loaned for mutual assistance and is subject to recall at any time.

Property of:
THE TECHNICAL MATERIEL CORPORATION
MAMARONECK, NEW YORK



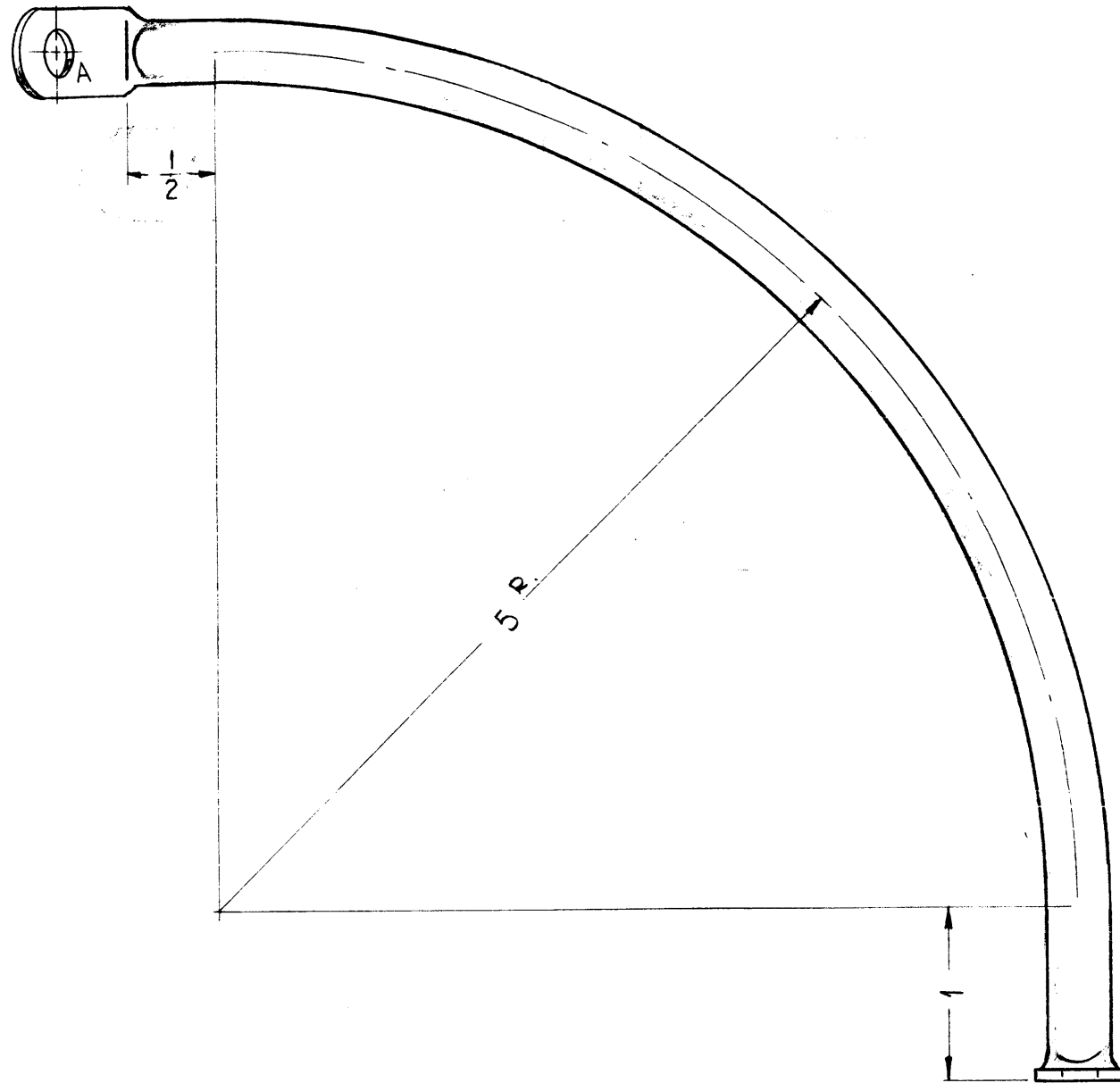
D	PICT & DIMS REVISED	1-18-67	17606	RME	<i>[Signature]</i>	<i>[Signature]</i>	
B	ADDED IT. 1 PX370-3-8 USED ON CHART & TITLE UPDATED	7-28-66	16646	RME	<i>[Signature]</i>	<i>[Signature]</i>	
A	FINISH & SPEC. NO WAS GOLD PLATE .000025	11/6/61	5848	G.D.	<i>[Signature]</i>	<i>[Signature]</i>	
ISSUE	ITEM	CHANGED FROM	DATE	CH. NO.	DRAFTS	CHECKER	ENG. APP.
TOLERANCES		SCALE: FULL ~ DO NOT SCALE ~					
DEC. DIM. ±		MAXIMUM ALLOWABLE TOLERANCES HAVE BEEN DETERMINED AND ANY DEVIATIONS WILL BE CAUSE FOR REJECTION.					
FRAC. DIM. ± 1/64		REMOVE ALL BURRS AND SHARP EDGES					
ANGULAR DIM. ±							

1	GPT-40K() 4	AS-125	AX-458	12-23-63
1	GPT-40K() 3	AS-120	AX-353	12-23-63
1	GPT40K	AX-209		7-6-60
REQ. PER UNIT	MODEL	SECTION	ASS'Y. NO.	DATE
USED ON				

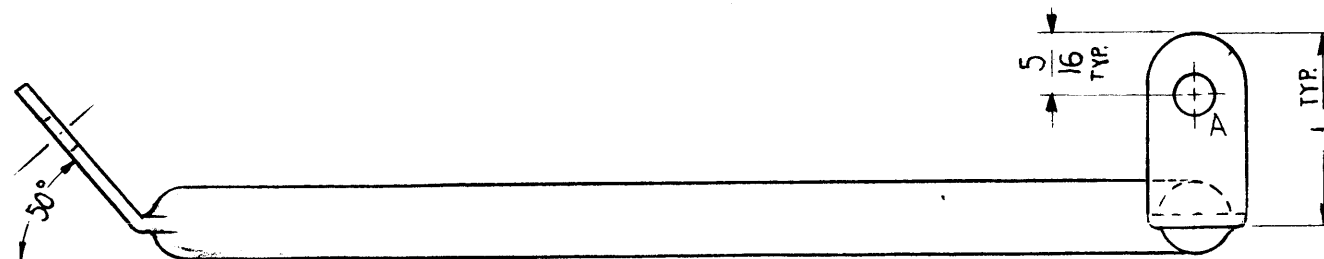
7-4	1	PX 370-3-8	INSULATION, SLEEVING, TEFLON	
REQ. ITEM		PART NO.	DESCRIPTION	SYMBOL
		1/4 DIA.	THE TECHNICAL MATERIEL CORP.	
		STOCK SIZE	MAMARONECK.	NEW YORK
		COPPER TUBING	STRAP, CONNECTING, ROTOR -	
		MATERIAL	"L" SECTION	
			J.C. Biele	<i>[Signature]</i>
			<i>[Signature]</i>	<i>[Signature]</i>
			DRAWN	CHECKED
			FINAL APPROVAL	
		SILVER PLATE .0003		
		FINISH & SPEC. NO.	ELEC. DES. APP.	MECH. DES. APP.
FP 180 D				

C
FP-191

THE CONTENTS OF THIS DRAWING ARE THE EXCLUSIVE PROPERTY OF THE TECHNICAL MATERIEL CORP. ITS UNAUTHORIZED USE OR REPRODUCTION IN WHOLE OR IN PART IS STRICTLY FORBIDDEN.



LEGEND		
HOLE	DESCRIPTION	REQ'D.
A	13/64 DIA.	2



SYM	DESCRIPTION	DATE	CH. NO.	DRAFTS	CHECKER	ENG. APP.
C	USED ON CHART AND TITLE UPDATED	12/23/63	10642			
B	Completely Revised	7-2-62	6838	SRG		
A	Redrawn & Revised From 1-Size	12-15-61	6066	R.H.		

UNLESS OTHERWISE SPECIFIED:
DIMENSIONS ARE IN INCHES
TOLERANCES ON FRACTIONS ± 1/64 DECIMALS ± .005 ANGLES ± 1/2°

SCALE:
MAXIMUM ALLOWABLE TOLERANCES HAVE BEEN DETERMINED AND ANY DEVIATIONS WILL BE CAUSE FOR REJECTION.
REMOVE ALL BURRS AND SHARP EDGES

REQ. PER UNIT	MODEL	SECTION	ASSY. NO.	DATE
1	GPT-40K()4	AS-125	CL-278	12-23-63
1	GPT-40K()3	AS-120	CL-278	12-15-61

REQ. ITEM	PART NO.	DESCRIPTION	SYMBOL
	3/8 O.D.	THE TECHNICAL MATERIEL CORP.	
	STOCK SIZE	MAMARONECK, NEW YORK	
	COPPER TUBING	CL-278 MACHINING	
	MATERIAL		
SOFT		E.L.	RUIZZO
TYPE & TEMPER	HEAT TREAT. SPEC.	DRAWN	CHECKED
SILVER PLATE		LT	DB
FINISH & SPEC. NO.		ELEC. DES. APP.	MECH. DES. APP.

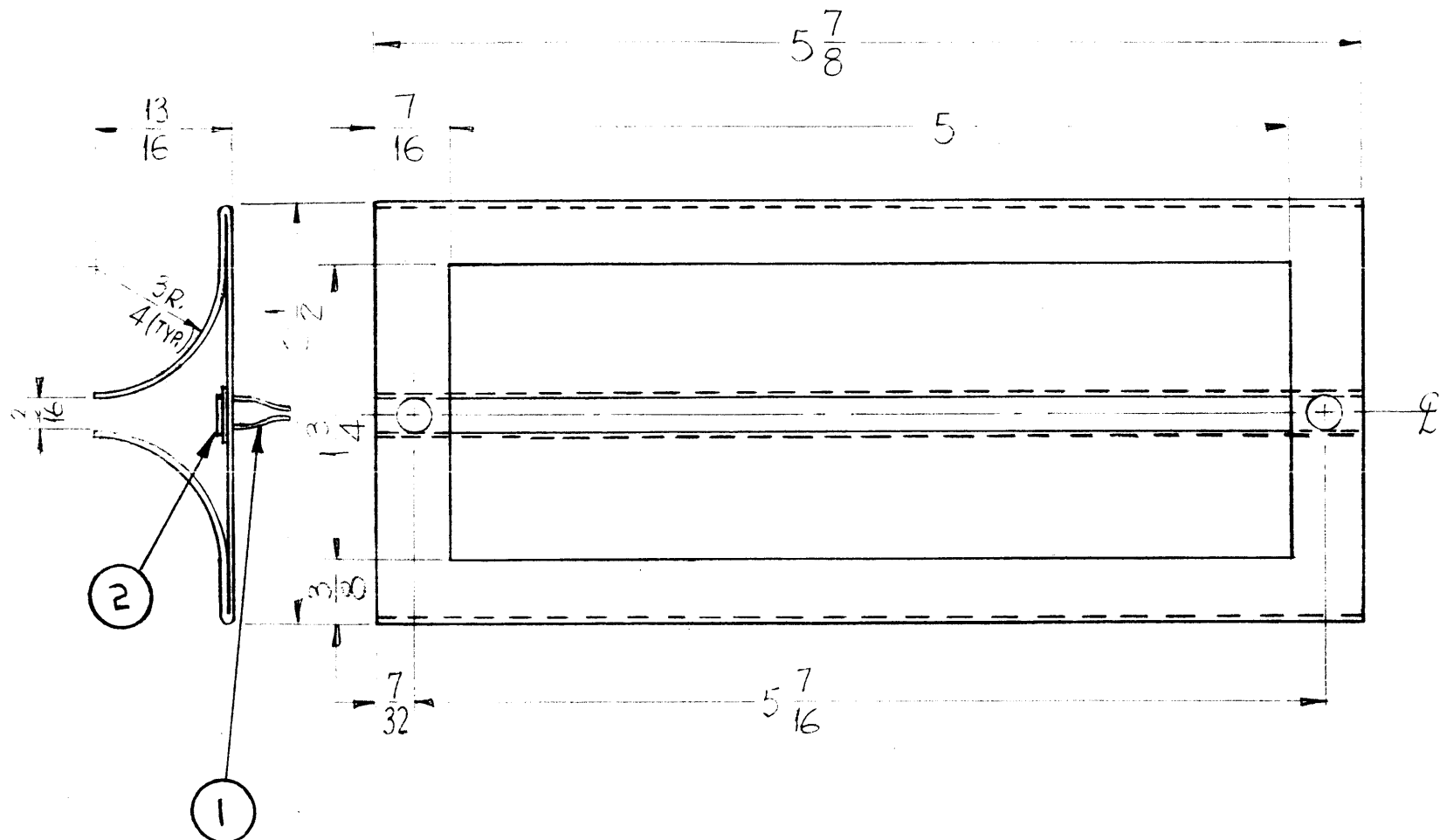
FP-191

C

X
FP-194

REVISIONS

SYM	DESCRIPTION	DATE	E.M.N. NO.	DRAFT	CHKD	APPD
X	CHART ADDED MATERIAL WAS #20 GA STL.	9/20/65	TH	H.V.V.		



TMC P/N	MATERIAL
FP-194	#20 GA STL. CR5
FP194-2	.040 ALUM. 5052-H32

NOTE
INSTALL ITEMS 1 & 2
AFTER PAINTING.

REQ'D.	ITEM	PART NUMBER	DESCRIPTION	SYMBOL
2	2	FW10HBN	WASHER, FLAT	
2	1	FS-115-1	CLIP, SPRING TENSION	

KRUZ LIST OF MATERIAL

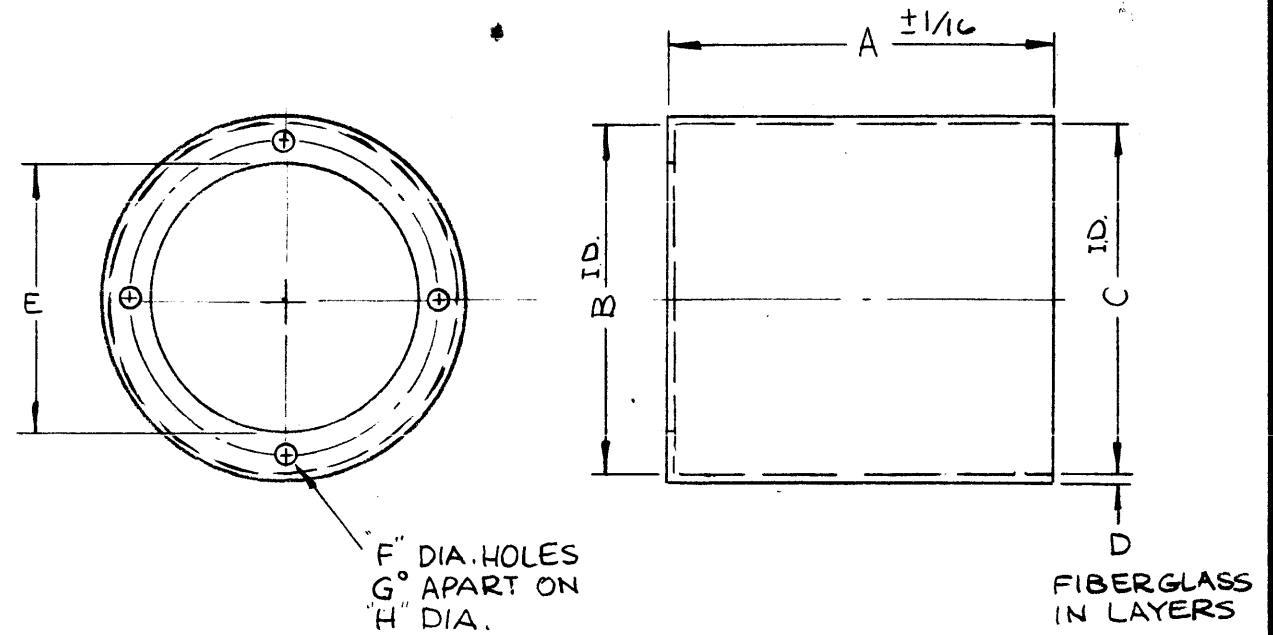
MATERIAL SEE CHART	THE TECHNICAL MATERIEL CORP. MAMARONECK, NEW YORK		
FINISH BLUE VINYL	TITLE PLATE, AIR DEFLECTOR		
UNLESS OTHERWISE SPECIFIED DIMENSIONS ARE IN INCHES AND INCLUDE CHEMICALLY APPLIED OR PLATED FINISHES		DRAWN DM	DATE 5/25/62
DECIMALS .X ± .05 .XX ± .01 .XXX ± .005		CHECKED JDe	DATE
FRACTIONS ± 1/64 ANGLES ± 0° 30'		ELECT. DES.	DATE
TOLERANCES		MECH. DES.	DATE
THE CONTENTS OF THIS DRAWING ARE THE EXCLUSIVE PROPERTY OF THE TECHNICAL MATERIEL CORP. ITS UNAUTHORIZED USE OR REPRODUCTION IN WHOLE OR IN PART IS STRICTLY FORBIDDEN.		FINAL APPROVAL [Signature] DATE	
NOTES		SHEET FP-194	
		REV. LTR. X	

Q'TY./UNIT	MODEL USED ON	ASS'Y. NO.
4	RAK-21 CODE A	

TMC P/N	A	B	C	D	E	F	G°	H	HOLES REQ.	MAT'L	FINISH
FP 203-1	3 1/2	5 1/8	5 1/4	3 PLY	4 7/8	~	~	~	~	FIBERGLASS	S115

FP 203

REVISIONS						
SYM	DESCRIPTION	DATE	E.M.N. NO.	DRAFT	CHKD	APPD
X	EXPERIMENTAL RELEASE	6-6-66	X	<i>[Signature]</i>		
X ₂	OBSOLETE FP 203-1	12-2-66		<i>[Signature]</i>		<i>[Signature]</i>
Ø	ORIGINAL RELEASE FOR PRODUCTION	3-27-67		RME		
A	ADD -1 TO PIN CHT.	4-21-70	19820	GE	<i>[Signature]</i>	FB
B	COLUM E-1 WAS 4 3/8, TLAA APP.	3-3-72	20498	GE	ES	ES



REQ'D.	ITEM	PART NUMBER	DESCRIPTION	SYMBOL
F. BUDETTI LIST OF MATERIAL				
MATERIAL			THE TECHNICAL MATERIEL CORP. MAMARONECK, NEW YORK	
SEE CHART			TITLE CYLINDER, FLANGED	
FINISH			DRAWN <i>[Signature]</i> DATE 11-19-66	
SEE CHART			CHECKED <i>[Signature]</i> DATE 11-19-66	
UNLESS OTHERWISE SPECIFIED DIMENSIONS ARE IN INCHES AND INCLUDE CHEMICALLY APPLIED OR PLATED FINISHES			ELECT. DES. <i>[Signature]</i> DATE 12/1/66	
DECIMALS .X ± .05 .XX ± .01 .XXX ± .005			MECH. DES. <i>[Signature]</i> DATE 12/1/66	
FRACTI NS ± 1/64 ANGLES ± 0° 30'			FINAL APPROVAL <i>[Signature]</i> DATE 3/27/67	
TOLERANCES			FP 203	
			SHEET	
			REV. LTR. B	

	TLAA-1K	
1	TST-2.5K	BMA148
QTY./UNIT	MODEL USED ON	ASS'Y. NO.
SCALE STANDARD DWG	CODE A	S401-451 S401- S401-

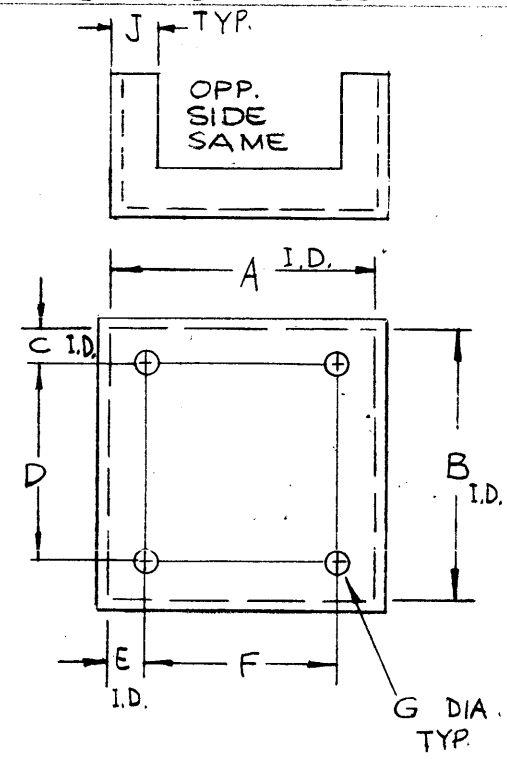
NOTES

THE CONTENTS OF THIS DRAWING ARE THE EXCLUSIVE PROPERTY OF THE TECHNICAL MATERIEL CORP. ITS UNAUTHORIZED USE OR REPRODUCTION IN WHOLE OR IN PART IS STRICTLY FORBIDDEN.

TMC P/N	A	B	C	D	E	F	G	H	I	J	MATERIAL	FINISH
FP 204 -1	5 ³ / ₈	8 ⁷ / ₈	1 ¹ / ₄	5 ¹ / ₂	1 ¹ / ₂	4 ¹ / ₂	3 ³ / ₁₆	1-3/4	3PLY	1/2	FIBERGLASS	SI15 GREY ENAM.
FP 204 -2	7 ³ / ₁₆	12 ¹ / ₂	2 ³ / ₃₂	7 ¹ / ₄	1 ³ / ₁₆	4 ³ / ₈	1/4	1-3/4	3PLY	NONE	II	II
FP 204 -3	8 ¹ / ₈	7 ¹ / ₈	—	—	—	—	—	2 ³ / ₄	3PLY	—	FIBERGLASS	SI15 GREY ENAM.
FP 204 -4	8 ¹ / ₈	8 ³ / ₈	—	—	—	—	—	3	3PLY	—	FIBERGLASS	SI15 GREY ENAM.
FP 204 -5	3 ³ / ₄	2	—	—	—	—	—	1 ⁷ / ₈	1PLY	—	KYDEX	SI15 GREY ENAM.
FP 204 -6	9 ¹ / ₂	8 ¹ / ₂	—	—	—	—	—	4	3PLY	—	FIBERGLASS	SI15 GREY ENAM.

REVISIONS						
SYM	DESCRIPTION	DATE	E.M.N. NO.	DRAFT	CHKD	APPD
X	EXPERIMENTAL RELEASE	6-16-66	X			
X1	FP204-2 REVISED	7-11-66	X1			
X2	FP204-3 ADDED	10-6-66	X2			
X3	ON FP204-1, D WAS 6 1/4, FP204-2, D WAS 7-3/16	11-1-66	X3			
X4	FP204-3 DEL. SEE PX1001	12-5-66	X4			
X5	ON-1 A,C,H DIM REVISED, ON-2 A,B,H DIM. REVISED	12-14-66	X5			
X6	J DIM. ADDED	12-27-66	X6			
Ø	ORIGINAL RELEASE FOR PRODUCTION	3-1-67	*			
A	FP 204-3 & 4 ADDED	1-24-69	18735	HG		FB
B	FP 204-5 ADDED	8-1-68	19012	H.S.		EFM
C	FP 204-6 ADDED	3/17/71	20268	GE		G.E.D.

FP 204



FIBERGLASS IN LAYERS

REQ'D.	ITEM	PART NUMBER	DESCRIPTION	SYMBOL
F. BUDETTI LIST OF MATERIAL				
MATERIAL		SEE CHART		
FINISH		SEE CHART		
UNLESS OTHERWISE SPECIFIED DIMENSIONS ARE IN INCHES AND INCLUDE CHEMICALLY APPLIED OR PLATED FINISHES		THE TECHNICAL MATERIEL CORP. MAMARONECK, NEW YORK		
TITLE		BOX, FORMED		
DECIMALS	FRACTIONS	DRAWN	DATE	FINAL APPROVAL
.X ± .05	± 1/64		6-16-66	
.XX ± .01	ANGLES ± 0° 30'	CHECKED	DATE	
.XXX ± .005			2-28-67	
TOLERANCES		ELECT. DES.	DATE	
		MECH. DES.	DATE	
			28 Feb 67	
SHEET				REV. LTR.
FP 204				C

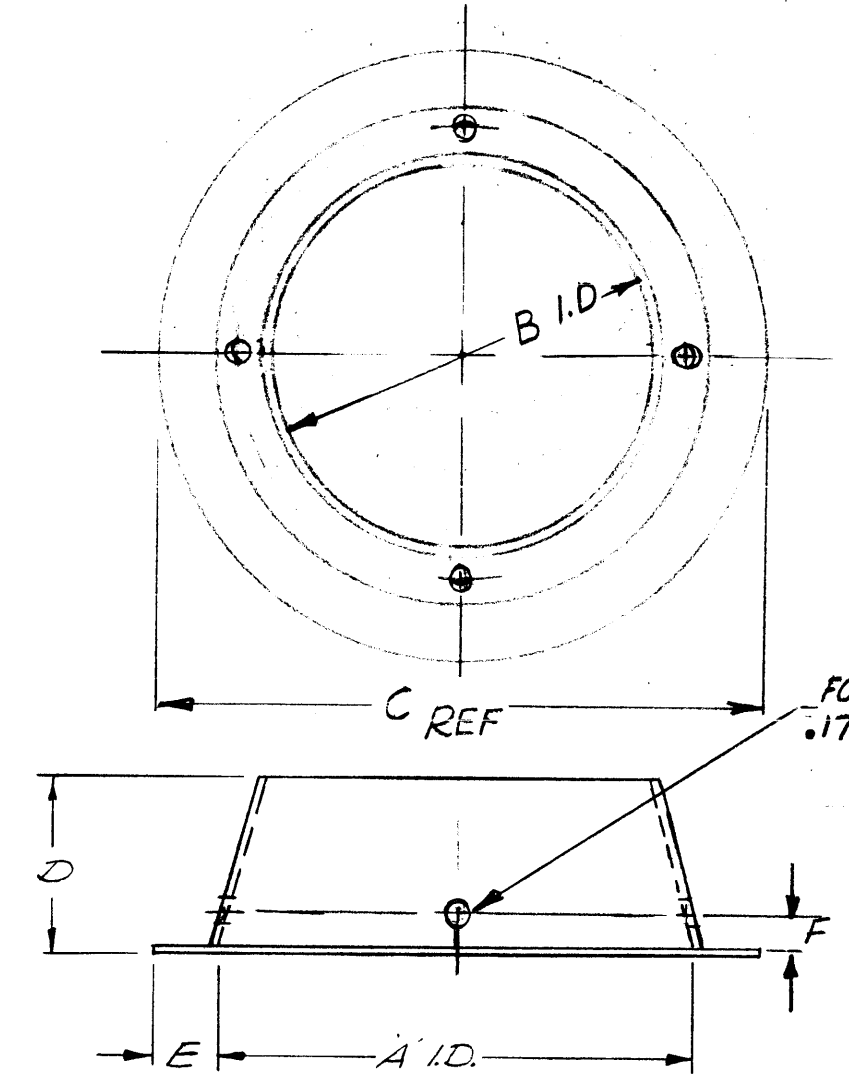
NOTES

Q'TY./UNIT	MODEL USED ON	ASS'Y. NO.
—	A	STANDARD

THE CONTENTS OF THIS DRAWING ARE THE EXCLUSIVE PROPERTY OF THE TECHNICAL MATERIEL CORP. ITS UNAUTHORIZED USE OR REPRODUCTION IN WHOLE OR IN PART IS STRICTLY FORBIDDEN.

TMC P/N	A DIM.	B DIM.	C DIM.	DDIM.	E DIM.	FDIM.	MATL.	FINISH
FP 206-1	8	6 ⁷ / ₁₆	9 ¹ / ₄	2 ¹ / ₂	5/8	—	FIB. GLS. 3 PLY	TMC GREY
FP 206-2	6	5 ¹⁵ / ₁₆	7 ¹ / ₄	1 ¹ / ₈	5/8	—	"	"
FP 206-3	1 ³ / ₄	1 ³ / ₄	2 ³ / ₈	1 ³ / ₈	5/16	—	"	"
FP 206-4	9-7/8	9-13/16	11-5/8	1-1/2	7/8	—	"	"
FP 206-5	6	5-15/16	7-1/4	1-7/8	NO FLANGE	3/8	"	"

REVISIONS						
ZONE	LTR	DESCRIPTION	DATE	E.M.N. NO	DRAFT	CHKD APPD
	A	FP206-3 ADDED	10/14/70	20031	W	PEJ PEJ
	B	FP206-4 ADDED	5/18/71	20361	RF	PEJ PEJ
	C	FP 206-5 ADDED	7/15/72	20492	W	EP EP
	D	ON FP 206-5 E DIM WAS 5/8 F DIM ADD. .171 DIA ON 90° 4 REQ ADD	3/12-74	21148	GDL	A A



STANDARD DRAWING

REQ'D	ITEM	PART NUMBER	DESCRIPTION	SYM.		
		F BUDETTI	LIST OF MATERIAL			
FINAL APPROVAL		DATE	THE TECHNICAL MATERIEL CORP. MAMARONECK, NEW YORK <i>FLUE, OUTSIDE FLANGE</i>			
MECH. DES.		DATE				
ELECT. DES.		DATE				
CHECKED		DATE				
DRAWN		DATE	SIZE	CODE IDENT. NO.	DWG NO.	ISSUE
		EVANGELIS 12-1-69	B	82679	FP 206	D
SCALE			SHEET OF			

QTY / UNIT	MODEL USED ON	ASS'Y NO.
	PALA 10K	
APPLICATION		
	CODE	
NOTICE TO PERSONS RECEIVING THIS DRAWING THE TECHNICAL MATERIEL CORPORATION claims proprietary right in the material disclosed hereon. This drawing is issued in confidence for engineering information only and may not be reproduced or used to manufacture anything shown hereon without permission from THE TECHNICAL MATERIEL CORPORATION to the user. This drawing is loaned for mutual assistance and is subject to recall at any time.		

UNLESS OTHERWISE SPECIFIED DIMENSIONS ARE IN INCHES AND INCLUDE CHEMICALLY APPLIED OR PLATED FINISHES	
DECIMALS	FRACTIONS
.X ± .05	1/64
.XX ± .01	TOLS. ANGLES
.XXX ± .005	0° -30'
MATERIAL	
SEE CHART	
FINISH	
SEE CHART	

5

4

3

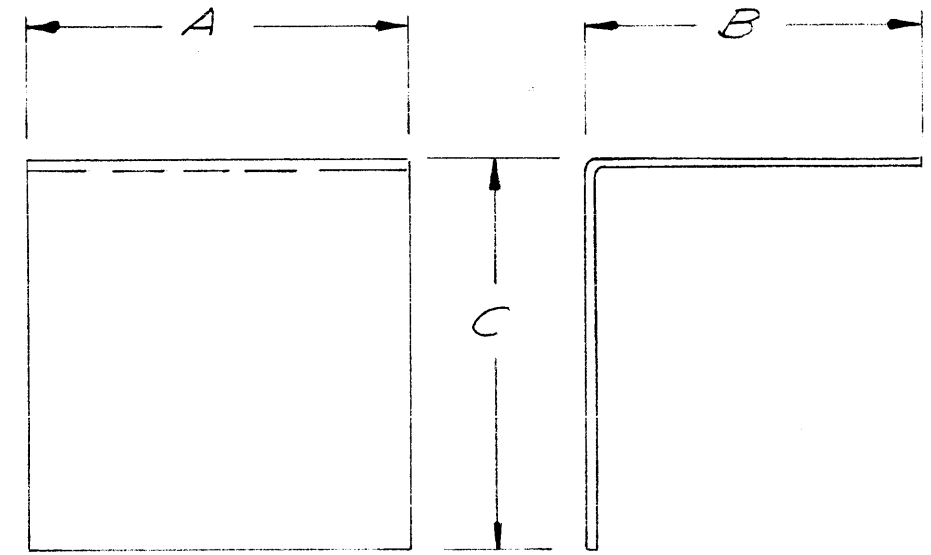
2

1

REVISIONS

ZONE	LTR	DESCRIPTION	DATE	E.M.N.NO	DRAFT	CHKD	APPD
	Ø	REVISION RELEASE	3/15/71		W		PEL
	A	ADD - 2	5/24/71	21086	GE	EJ	EJ

TMC P/N	A' DIM.	B' DIM.	C' DIM.	MATERIAL	FINISH
FP207-1	2 IN.	2 IN	3 IN	3 PLY FIBERGLAS	S115 TMC GRAY
FP207-2	2 3/4	2 IN.	3 IN.	3 PLY FIBERGLAS	S115 TMC GRAY



STANDARD DRAWING

QTY / UNIT	MODEL USED ON	ASS'Y NO.
APPLICATION		
CODE		

NOTICE TO PERSONS RECEIVING THIS DRAWING
 THE TECHNICAL MATERIEL CORPORATION claims proprietary right in the material disclosed hereon. This drawing is issued in confidence for engineering information only and may not be reproduced or used to manufacture anything shown hereon without permission from THE TECHNICAL MATERIEL CORPORATION to the user. This drawing is loaned for mutual assistance and is subject to recall at any time.

UNLESS OTHERWISE SPECIFIED
 DIMENSIONS ARE IN INCHES
 AND INCLUDE CHEMICALLY APPLIED
 OR PLATED FINISHES

DECIMALS	FRACTIONS
.X ± .05	1/64
.XX ± .01	TOLS. ANGLES
.XXX ± .005	0° - 30'

MATERIAL 3 PLY FIBERGLASS
 FINISH S115 TMC GRAY

REQ'D	ITEM	PART NUMBER	DESCRIPTION	SYM.
BUDETTI LIST OF MATERIAL				
FINAL APPROVAL <i>[Signature]</i>			DATE 15/Nov/71	THE TECHNICAL MATERIEL CORP. MAMARONECK, NEW YORK
MECH. DES. <i>[Signature]</i>			DATE 15/Nov/71	
ELECT. DES.			DATE	
CHECKED			DATE	
DRAWN <i>GE</i>			DATE 3/12/71	COVER, NON-METALIC
SIZE B	CODE IDENT. NO. 82679	DWG NO. FP207	ISSUE A	
SCALE		SHEET		OF

5

4

3

2

1