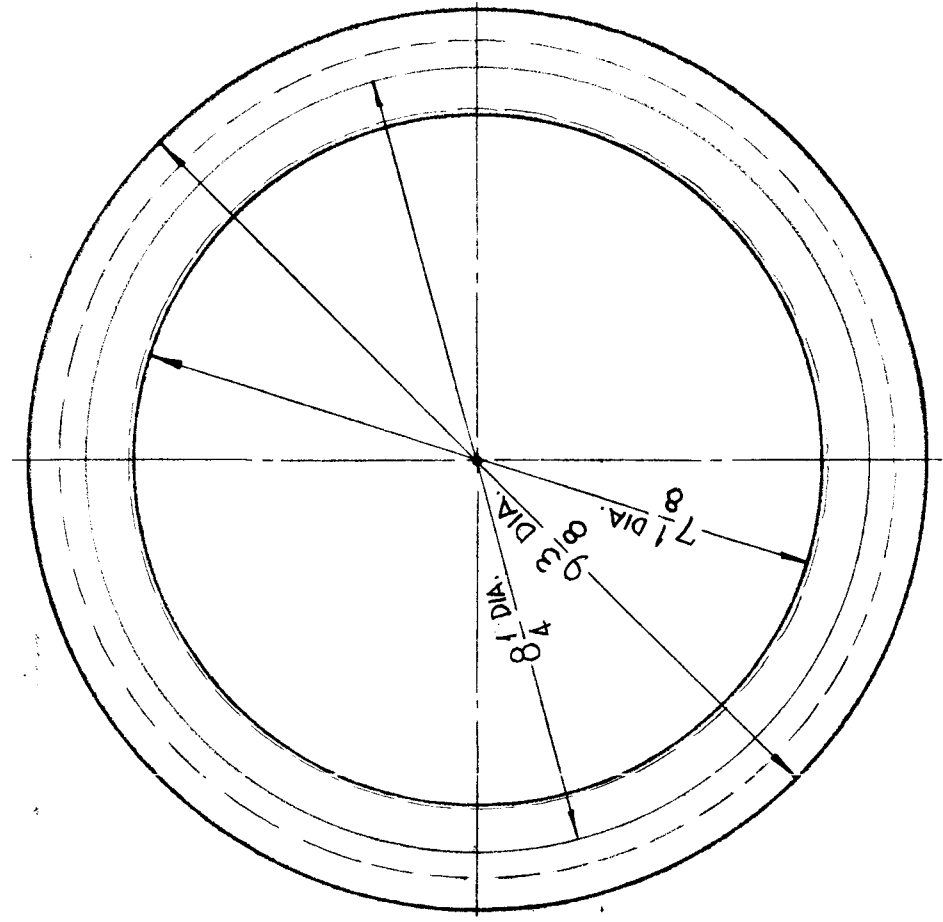
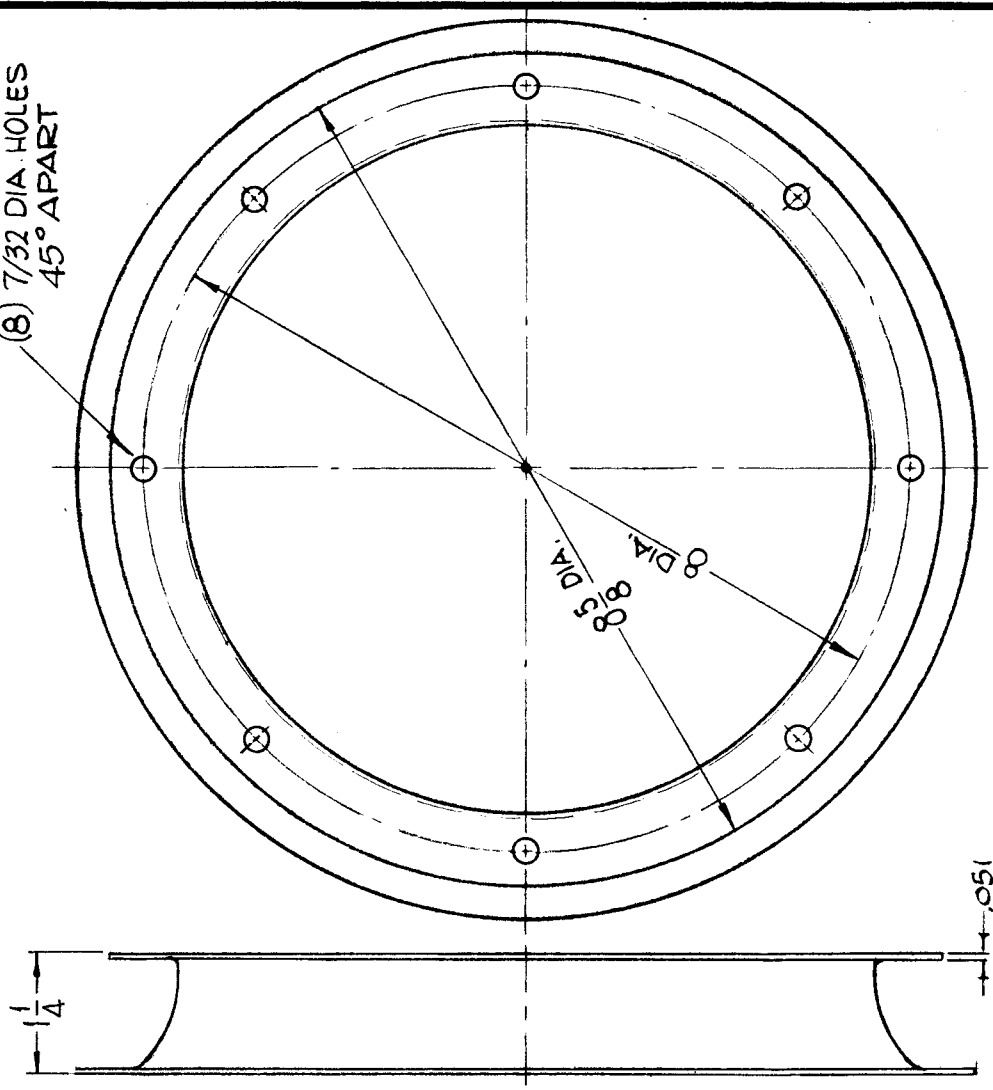


REQ. PER UNIT	MODEL	USED ON
TER 100 K	ASSY. NO.	FP200
	DATE	Ø
	4-30-64	

(8) 7/32 DIA. HOLES
45° APART



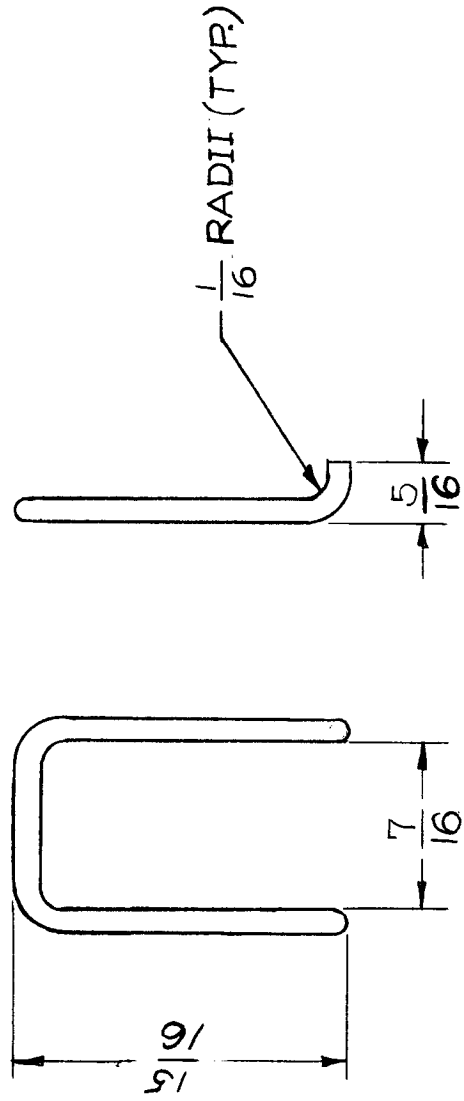
REQ. ITEM	PART NO.	F. BUDETTI	DESCRIPTION	SYMBOL
			THE TECHNICAL MATERIEL CORP. MAMARONECK. NEW YORK	
	ALUMINUM		ADAPTOR, FAN, INTAKE	
	SPUN		SRG	
	ANODIZED		DRAWN	
	FINISH & SPEC. NO.		CHECKED	
			FINAL APPROVAL	
				FP200
				Ø

UNLESS OTHERWISE SPECIFIED
DIMENSIONS ARE IN INCHES AND INCLUDE
CHEMICALLY APPLIED OR PLATED FINISHES

DATE 6-9-65
SCALE 1/2" = 1"
DRAFTS JC
CHECKER
ENG. APP.

DESCRIPTION ORIGINAL RELEASE FOR PRODUCTION
CODE C
TOLERANCES DECIMALS
FRACTIONS
ANGLES
± .05
± 1/64
± 0° 30'

REQ. PER UNIT	USED ON	DATE
2	ASSY. NO.	5-5-64
	MODEL	
	TU-2	A1769
	FP201	A



REQ. ITEM	PART NO.	DESCRIPTION	SYMBOL
.062 DIA.		R. HAY	
STOCK SIZE		THE TECHNICAL MATERIEL CORP.	
BRASS ROD		MAMARONECK. NEW YORK	
MATERIAL		RETAINER, COIL	
FREE MACHINING	—H—	A. MARINO @ 5-21-64	
TYPE & TEMPER	HEAT TREAT. SPEC.	DRAWN	CHECKED
SILVER PLATE 5243			
CLEAR IRIDITE 5423			
FINISH & SPEC. NO.		ELEC. DES. APP.	MECH. DES. APP.
			FP201
			A

DATE	CH. NO.	DRAFTS	CHECKER	ENG. APP.
7/29/65	14544	A.V.V.	J.C.B.	
5-28-64	0	A.M.	@	
5/5/64	X	A.M.		
SCALE	2:1			
DESCRIPTION	UNLESS OTHERWISE SPECIFIED DIMENSIONS ARE IN INCHES AND INCLUDE CHEMICALLY APPLIED OR PLATED FINISHES			
TOLERANCES	FRACTIONS ± 1/64 ANGLES ± 0° 30'			
CODE	A			

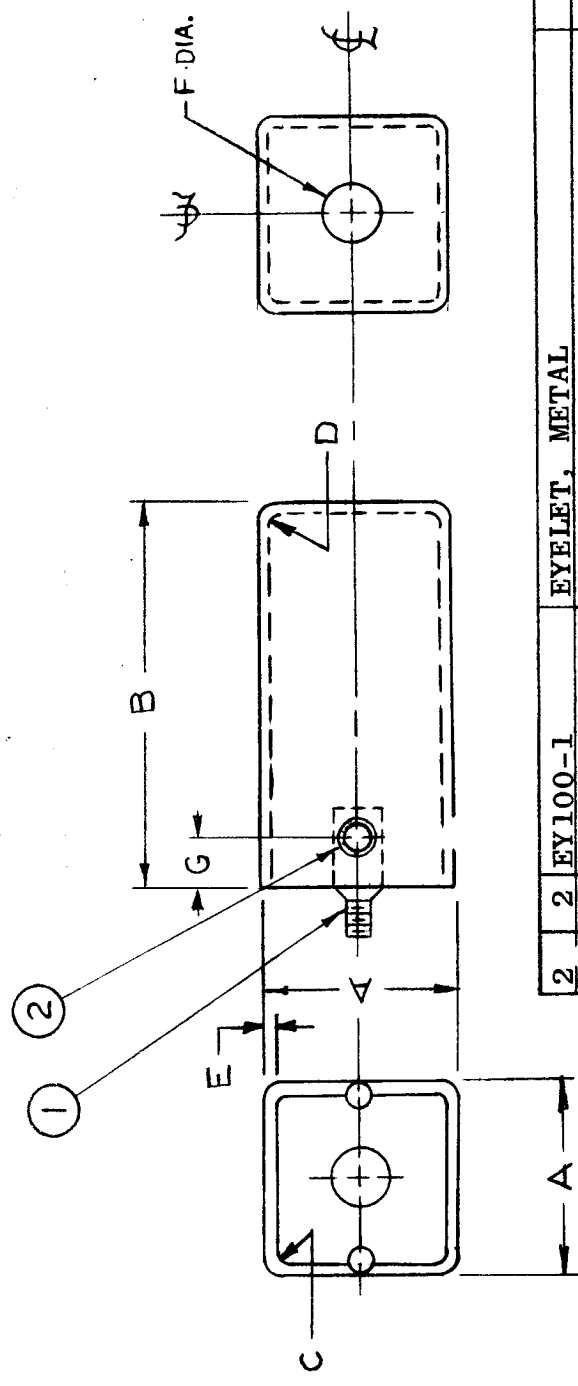
STANDARD DRAWING

REQ. PER UNIT
USED ON
MODEL
VLRB-1

ASSY. NO.
DATE
9-3-64

FP202 A

TMC PART NO.	MFGR. CASE PART NO.	"A" SQ. CASE	"B"	"C"	"D"	"E"	CASE MAT'L	CASE FINISH	F	G	ITEM #1	REQ PER UNIT
FP202-1	HU4280	1"	2"	3/32 ±.010	3/32	.019	BRASS	TMC HOT TIN DIP	9/32A/4	9/32A/4	SC106-1	12
FP202-2	HU4170	3/4"	1 27/32	3/32 ±.010	3/32	.019	BRASS		9/32A/4	9/32A/4	SC106-1	5



SYM	DESCRIPTION	DATE	CH. NO.	DRAFTS	CHECKER	ENG. APP.
A	CHART & PICT. REVISED, ITS. "1/8" ADDED.	12-2-64	13032	2P.	@	
Q	ORIGINAL RELEASE FOR PRODUCTION	9-9-64	Q	Q		
X	EXPER. RELEASE	9-3-64	X	Q		

SCALE	CODE	TOLERANCES	FRACTIONS
	C	± 1/64 ANGLES ± 0° 30'	

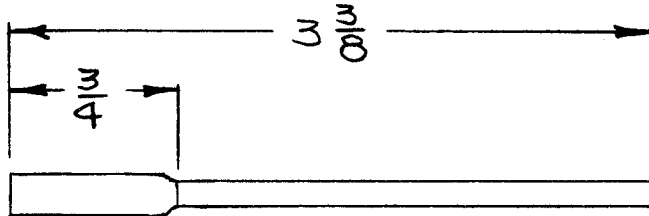
REQ. ITEM	PART NO.	DESCRIPTION	SYMBOL
2	EY100-1	EYELET, METAL	
2	SEE CHART	BOLT, EYE-SPADE	
		GELLMAN	

TYPE & TEMPER	HEAT TREAT. SPEC.	DRAWN	CHECKED	FINAL APPROVAL
		Q	Q	Q

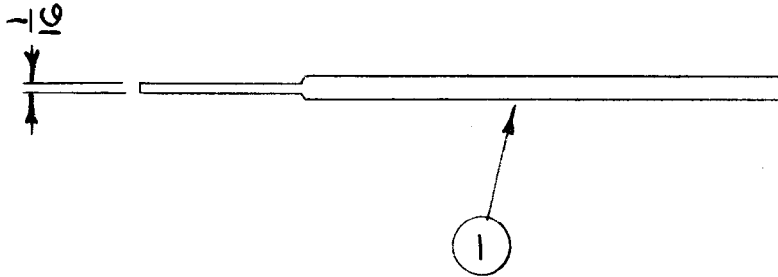
FINISH & SPEC. NO.	WITH LUGS
FP202 A	WITH LUGS

THE TECHNICAL MATERIEL CORP.
MAMARONECK, NEW YORK

APPLICATION			REVISIONS							
QTY	MODEL USED ON	ASS'Y NO.	LTR	DESCRIPTION	DATE	E.M.N.NO	DRAFT	CHKD	APPD.	
1	RAC-32	AX259-3	X	EXP RELEASE	12-19-67					
			Ø	ORIGINAL REL. FOR PROD.	2-14-68	Ø	R.G.			



INNER DIA. TO BE FREE OF BURRS



UNLESS OTHERWISE SPECIFIED DIMENSIONS ARE IN INCHES AND INCLUDE CHEMICALLY APPLIED OR PLATED FINISHES		3-3/8	1	TU100-2N	TUBING, COPPER, SOFT	
DECIMALS .X ± .05 .XX ± .01 .XXX ± .005		FRACTIONS 1/64 ANGLES 0° - 30'		M. STURMER LIST OF MATERIAL		
MATERIAL		REQ'D	ITEM	PART NUMBER	DESCRIPTION	SYM.
FINISH S245 SIL. PL S423 SIL. KOTE S401-451		FINAL APPROVAL	DATE	THE TECHNICAL MATERIEL CORP. MAMARONECK, NEW YORK		
		MECH. DES.	DATE	LEAD, ELECTRICAL		
		ELECT. DES.	DATE			
		CHECKED	DATE			
		DRAWN	DATE			
NOTICE TO PERSONS RECEIVING THIS DRAWING THE TECHNICAL MATERIEL CORPORATION claims proprietary right in the material disclosed hereon. This drawing is issued in confidence for engineering information only and may not be reproduced or used to manufacture anything shown hereon without permission from THE TECHNICAL MATERIEL CORPORATION to the user. This drawing is loaned for mutual assistance and is subject to recall at any time.				SIZE	CODE IDENT. NO.	DWG NO.
				A	82679	FP205
				SCALE 1:1	SHEET OF	
						ISSUE Ø