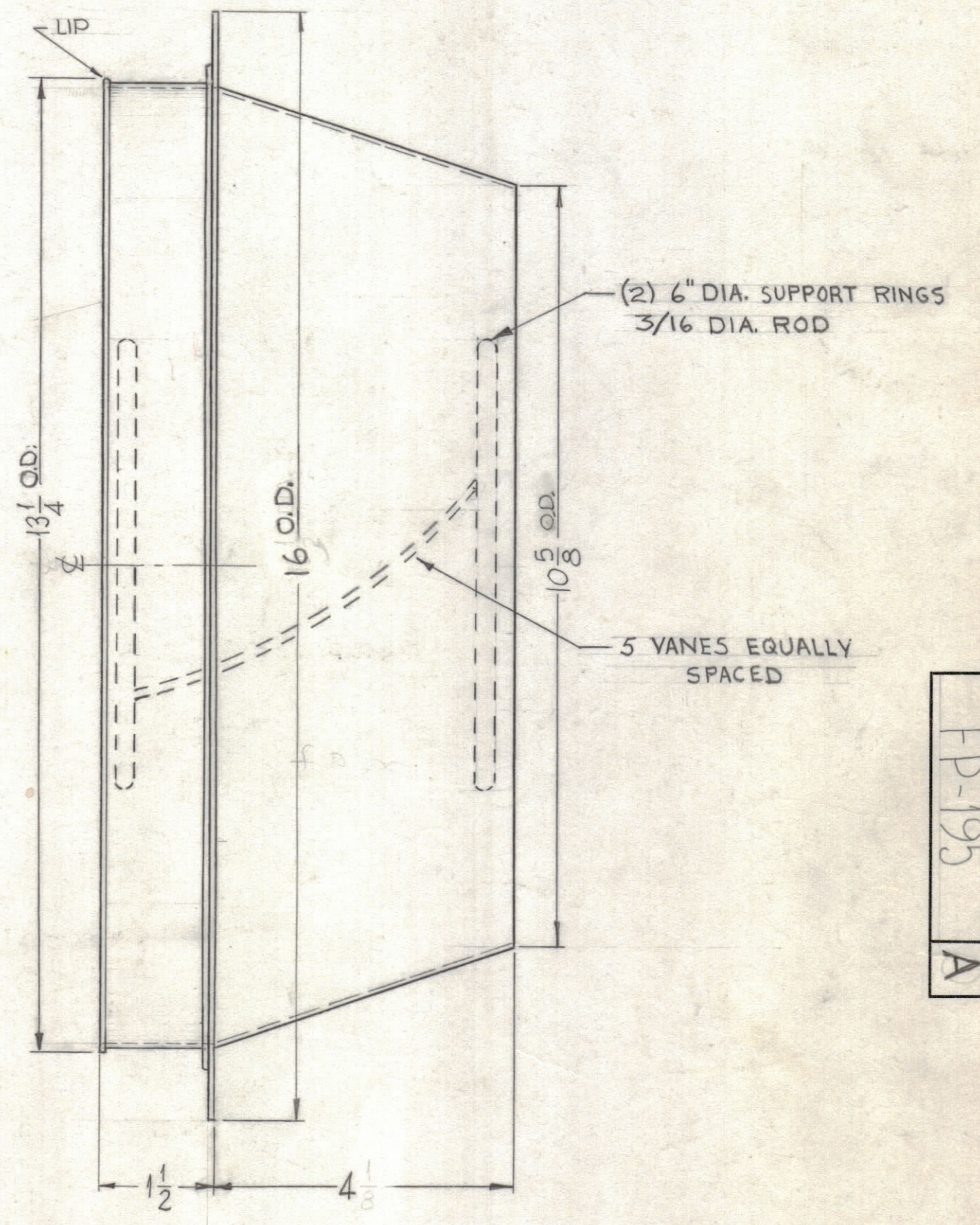
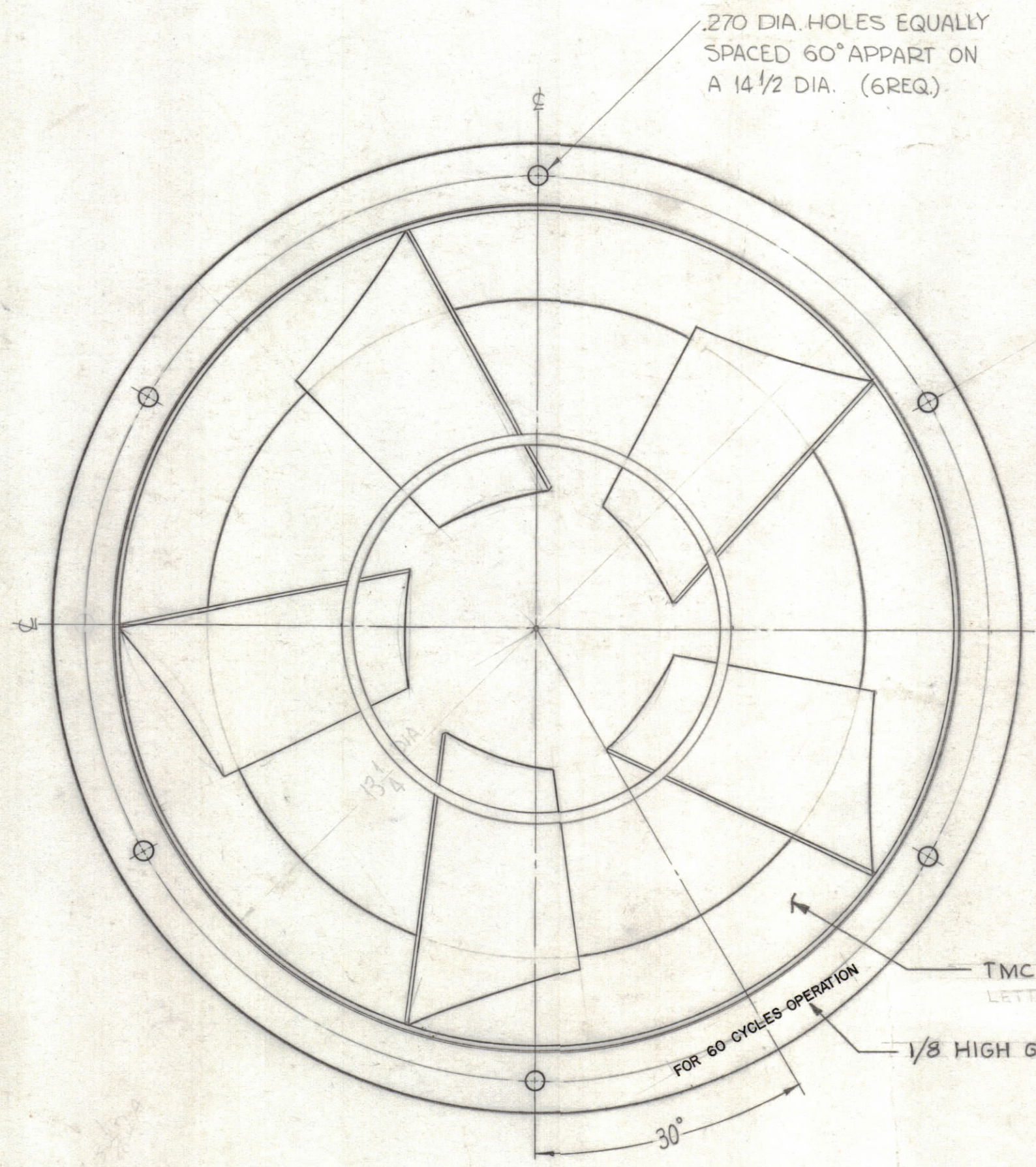


TMC P/N	MFG P/N	OPERATING FREQUENCY	NO. OF VANES
FP 195-50	SK 655	50 CY	NONE
FP 195-60	SK 701	60 CY	5

(SEE SHEET 2)

REVISIONS						
ZONE	SYM	DESCRIPTION	DATE	E.M.N. NO.	DRAFT	CHKD
	X1	BLADES ADDED	4-22-64			
	O	ORIGINAL RELEASE FOR PRODUCTION	5-27-64	O	A.M.	
	A	TMC CHART ADD. DIM. UPDATED, TMC PART NO. FP 195-60 ADD. TO PICT. SEE SHEET 2 OF 2 FOR FP 195-50	11-2-64	12781	J.L.	



FP 195-60

NOTE:  
FINISH- SEMI-GLOSS ENAMEL PER FED TT-E-529 COLOR\*27038 PER FED STD 595

NOTE  
MARKING PROCESS: AS PER TMC SPECIFICATION S-727.

QTY./UNIT	GPT-200K	BL-113
SCALE	MODEL USED ON	ASS'Y. NO.
DO NOT SCALE	CODE	

THE CONTENTS OF THIS DRAWING ARE THE EXCLUSIVE PROPERTY OF THE TECHNICAL MATERIEL CORP. ITS UNAUTHORIZED USE OR REPRODUCTION IN WHOLE OR IN PART IS STRICTLY FORBIDDEN.

REF: TMC DWG. BL-113

REQ'D.	ITEM	PART NUMBER	DESCRIPTION	SYMBOL
F. BUDETTI LIST OF MATERIAL				
MATERIAL		THE TECHNICAL MATERIEL CORP. MAMARONECK, NEW YORK		
.064 THICK STEEL		TITLE		
SEE NOTE		BLOWER, INLET, CENTRIFUGAL		
FINISH		DRAWN		
SEMIGLOSS BLACK ENAMEL		SRG		
		DATE		
		11-15-62		
		CHECKED		
		DD		
		DATE		
		11-15-62		
DECIMALS		ELECT. DES.		
.X ± .05		DATE		
.XX ± .01		MECH. DES.		
.XXX ± .005		DATE		
TOLERANCES		FP-195		
FRACTIONS ± 1/64		SHEET 1 OF 2		
ANGLES ± 0° 30'		REV. LTR.		
		A		

NOTES

STANDARD DRAWING

FP-195  
A