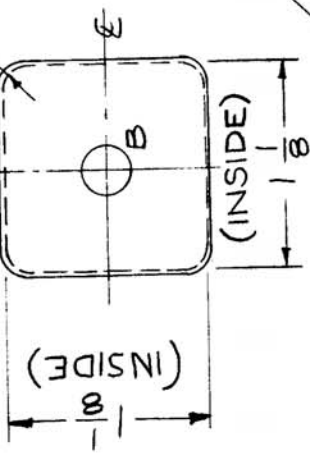


REQ. PART UNIT	MODEL	ASSY. NO.	DATE
1	SBE-2	A-1513	3-12-58
1	SBE-3	A-1513	11-30-59

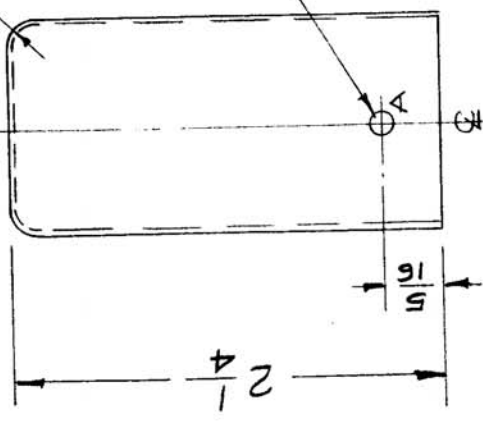
FP-161

A

1/8 R. (Inside)
4 Corners



1/8 R. (Inside)



Same on Opposite Side

A - #30 Dr. (.128 Diam) 2 Req.
B - 17/64 (.265) Diam. 1 Req.

Ref - Aluminum Goods #

REQ. ITEM	PART NO.	DESCRIPTION	SYMBOL
	.0159 THK.	THE TECHNICAL MATERIEL CORP.	
	Aluminum	MAMARONECK. NEW YORK	
		CAN. MACHINING	
ISSUE ITEM	CH. NO.	DATE	CHECKER
A 1	3816	12-27-60	RU JCS
<p>The word INSIDE Added (TOP VIEW) 2 PLACES</p> <p>CHANGED FROM</p> <p>DATE</p> <p>CHECKER</p> <p>ENG. APP.</p>			
<p>SCALE:</p> <p>MAXIMUM ALLOWABLE TOLERANCES HAVE BEEN DETERMINED AND ANY DEVIATIONS WILL BE CAUSE FOR REJECTION. REMOVE ALL BURRS AND SHARP EDGES</p>			
<p>TOLERANCES</p> <p>DEC. DIM. ±</p> <p>FRAC. DIM. ± 1/64</p> <p>ANGULAR DIM. ±</p>			
TYPE & TEMPER		HEAT TREAT. SPEC.	
FINISH & SPEC. NO.			
DRAWN		CHECKED	FINAL APPROVAL
16 ³ /12/58		JCS	JCS
ELEC. DES. APP. MECH. DES. APP.		FP-161 A	