

STANDARD DRAWING

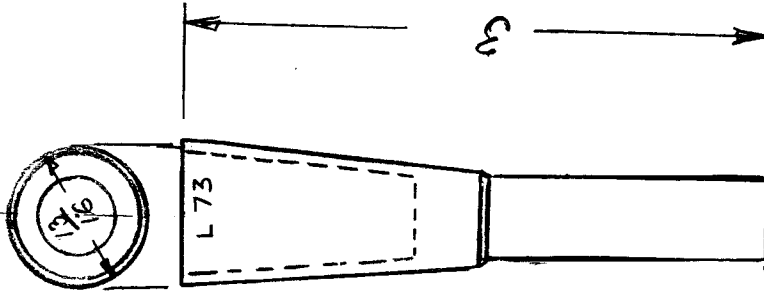
IF IT IS FOUND DESIRABLE TO CHANGE ANY TOLERANCE OR OTHER DETAIL SPECIFIED ON THIS DRAWING NOTIFY THE PURCHASER PROMPTLY.

MAXIMUM ALLOWABLE TOLERANCES HAVE BEEN DETERMINED AND DEVIATIONS WILL BE CAUSE FOR REJECTION. REMOVE ALL BURRS AND SHARP EDGES

USED ON
 MODEL PROJECT NO. ASSY. NO. DATE

FP-10001

EF SWITCH A-10067 14-11-55



MOULDED RUBBER

OBSOLETE

REPLACED BY TP104

NOTICE TO PERSONS RECEIVING THIS DRAWING

THE TECHNICAL MATERIEL CORPORATION claims proprietary right in the material disclosed hereon. This drawing is issued in confidence for engineering information only and may not be reproduced or used to manufacture anything shown hereon without permission from THE TECHNICAL MATERIEL CORPORATION to the user. This drawing is loaned for mutual assistance and is subject to recall at any time.

Property of:
 THE TECHNICAL MATERIEL CORPORATION
 MAMARONECK, NEW YORK

REF. DIAL LIGHT. NEW YORK - L 73

REQ. ITEM	PART NO.	DESCRIPTION	SYMBOL
		TMC (Canada) LIMITED ONTARIO	
		LIGHT BULB EXTRACTOR	
STOCK SIZE			
MATERIAL	WEIGHT PER PC.		
TYPE & TEMPER		E.W.B.G.	
HEAT TREAT. SPEC.		DRAWN	ELEC. DES. APP. MECH. DES. APP.
FINISH & SPEC. NO.		CHECKED	FINAL APPROVAL
			FP-10001 A

ISSUE ITEM	CHANGED FROM	DATE	CN. NO.	DRAFTS CHECKER	ENG. APP.
A -	SUPERSEDED REP. BY TP104	11/15/64	15769	J.V.V.	J.B.
TOLERANCES					
SCALE					
DRILL, PUNCH, COMMERCIAL STOCK SIZES AND MANUFACTURERS TOLERANCES ARE NOT INCLUDED.					
ALL OTHERS	DEC. DIM. ±	FRAC. DIM. ±	ANGULAR DIM. ±		

IF IT IS FOUND DESIRABLE TO CHANGE ANY TOLERANCE OR OTHER DETAIL SPECIFIED ON THIS DRAWING NOTIFY THE PURCHASER PROMPTLY.

MAXIMUM ALLOWABLE TOLERANCES HAVE BEEN DETERMINED AND DEVIATIONS WILL BE CAUSE FOR REJECTION. REMOVE ALL BURRS AND SHARP EDGES

FP10003-A

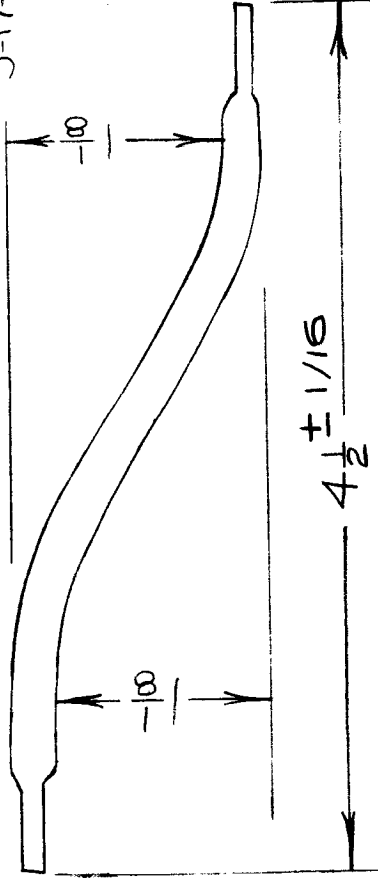
USED ON

MODEL PROJECT NO. ASS'Y. NO. DATE

HLC-3 ST1078 MAY 3/60

CA-799

9-17-63 EMN9969



FLATTEN BOTH ENDS 1/2"

ISSUE	ITEM	CHANGED FROM	DATE	CN. NO.	DRAFTS	CHECKER	ENG. APP.
A	1	REPLACED BY CA-799	9/17/63	9969	EMN	JFB	JFB
TOLERANCES							
SCALE 1 : 1							
DIMENSIONS IN INCHES UNLESS OTHERWISE SPECIFIED							
DRILL, PUNCH, COMMERCIAL STOCK SIZES AND MANUFACTURERS TOLERANCES ARE NOT INCLUDED.							
ALL OTHERS	DEC. DIM. ± FRAC. DIM. ± ANGULAR DIM. ±						

REQ. ITEM	PART NO.	DESCRIPTION	SYMBOL
	3/1600.X 3/32TK.	TMC (Canada) LIMITED	
	STOCK SIZE	OTTAWA ONTARIO	
	COPPER	CONNECTOR	
	MATERIAL		
	WEIGHT PER PC.		
	TYPE & TEMPER	JPC	
	HEAT TREAT. SPEC.	DRAWN	
		CHECKED	
		ELEC. DES. APP.	
		MECH. DES. APP.	
		FINAL APPROVAL	
	CADMIUM PLATED	FP10003	A
	FINISH & SPEC. NO.		

IF IT IS FOUND DESIRABLE TO CHANGE ANY TOLERANCE OR OTHER DETAIL SPECIFIED ON THIS DRAWING NOTIFY THE PURCHASER PROMPTLY.

MAXIMUM ALLOWABLE TOLERANCES HAVE BEEN DETERMINED AND DEVIATIONS WILL BE CAUSE FOR REJECTION. REMOVE ALL BURRS AND SHARP EDGES

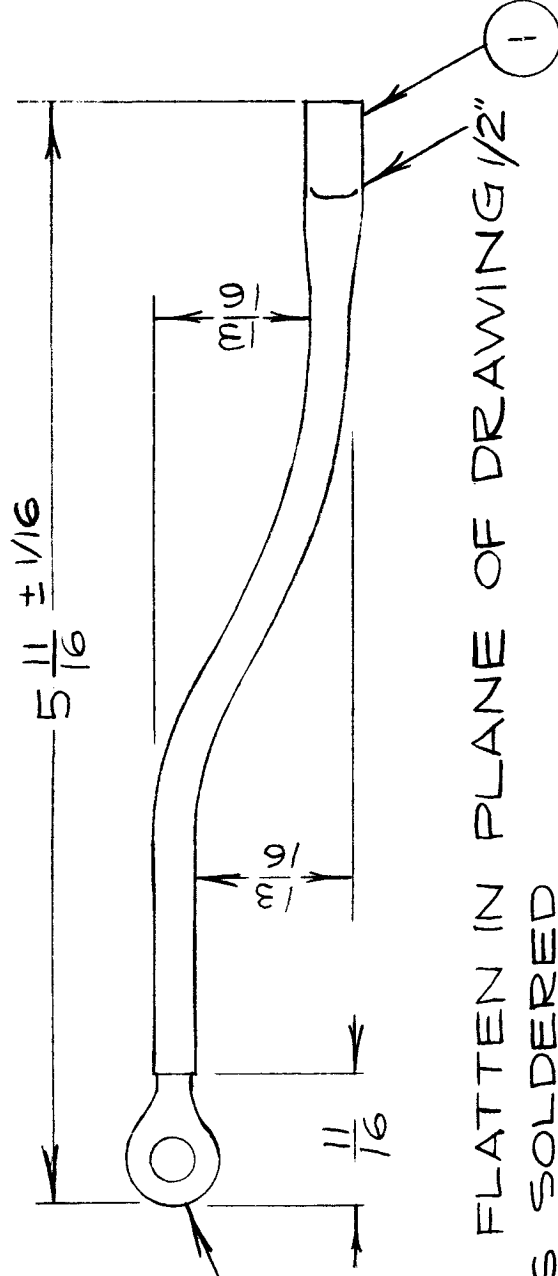
SUP

QUALITY REPLACES BY

CA-809

9-17-63 EMJ9968

2



NOTE: ITEM 2 IS SOLDERED TO ITEM 1.

1	2	TE/5632953	SOLDERLESS TERMINAL		
1	1	7/16ODX3/32TK.	COPPER TUBE		
REQ. ITEM	PART NO.		DESCRIPTION	SYMBOL	
STOCK SIZE			TMC (Canada) LIMITED OTTAWA		
MATERIAL			CONNECTOR ASS'Y		
WEIGHT PER PC					
TYPE & TEMPER			JPC		
HEAT TREAT. SPEC.			DRAWN R.W. Jones ELEC. DES. APP. MECH. DES. APP.		
FINISH & SPEC. NO.			CHECKED <i>me</i> FINAL APPROVAL		
CADMIUM PLATED			FPI0004		
FINISH & SPEC. NO.			A		

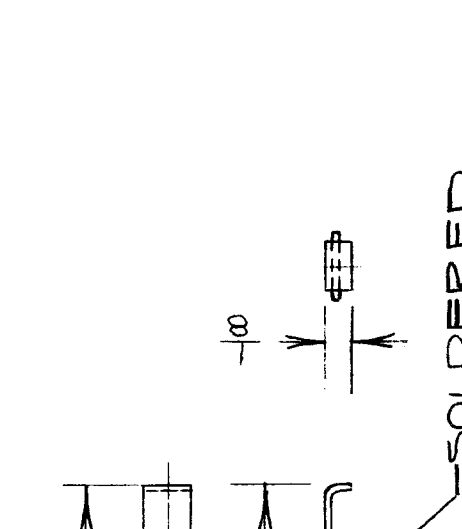
ISSUE ITEM	CHANGED FROM	DATE	CN. NO.	DRAFTS CHECKER	ENG. APP.
A 1	REPLACED BY CA-809	9-17-63	9968	EMJ	9968
TOLERANCES					
SCALE 1:1					
DIMENSIONS IN INCHES					
UNLESS OTHERWISE SPECIFIED					
DRILL, PUNCH, COMMERCIAL STOCK					
SIZES AND MANUFACTURERS					
TOLERANCES ARE NOT INCLUDED.					
ALL OTHERS	DEC. DIM. ±				
	FRAC. DIM. ±				
	ANGULAR DIM. ±				

IF IT IS FOUND DESIRABLE TO CHANGE ANY TOLERANCE OR OTHER DETAIL SPECIFIED ON THIS DRAWING NOTIFY THE PURCHASER PROMPTLY.

MAXIMUM ALLOWABLE TOLERANCES HAVE BEEN DETERMINED AND DEVIATIONS WILL BE CAUSE FOR REJECTION. REMOVE ALL BURRS AND SHARP EDGES

USED ON
 MODEL PROJECT NO. ASSY. NO. DATE
 HLC-3#4 ST1078 MAY 11/60

FP10005 A



NOTICE TO PERSONS RECEIVING THIS DRAWING

THE TECHNICAL MATERIEL CORPORATION claims proprietary right in the material disclosed herein. This drawing is issued in confidence for engineering information only and may not be reproduced or used to manufacture anything shown herein without permission from THE TECHNICAL MATERIEL CORPORATION to the user. This drawing is loaned for mutual assistance and is subject to recall at any time.

Property of:
 THE TECHNICAL MATERIEL CORPORATION
 MAMARONECK, NEW YORK

REPLACED BY CA-804
 9-17-63 EMN 9967

REQ. ITEM	PART NO.	DESCRIPTION	SYMBOL
1/32		TMC (Canada) LIMITED OTTAWA	
COPPER		GROUND CONNECTOR	
MATERIAL	WEIGHT PER PC.	HLC-3 # 4	
TYPE & TEMPER		JPC	
HEAT TREAT. SPEC.		DRAWN	
FINISH & SPEC. NO.		ELEC. DES. APP.	
		MECH. DES. APP.	
		CHECKED	
		FINAL APPROVAL	
			FP10005 A

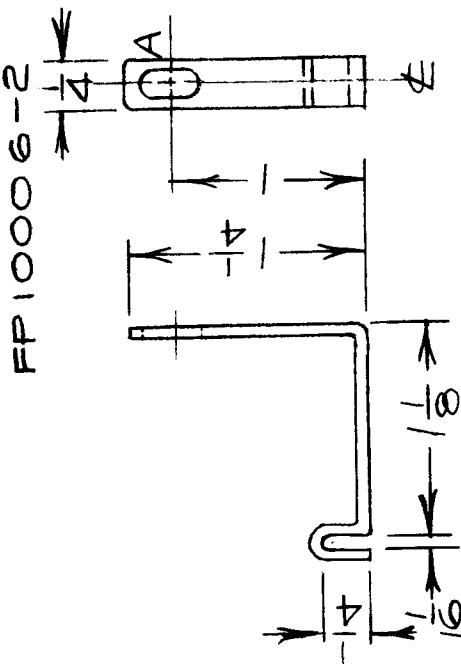
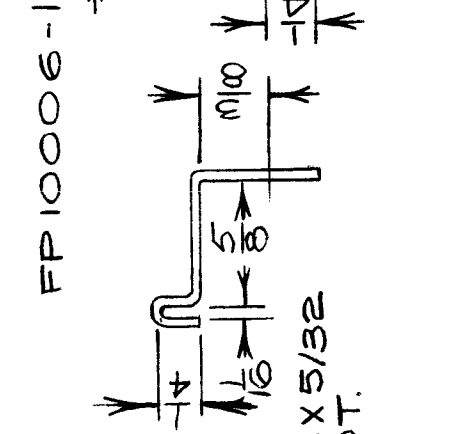
ISSUE	ITEM	CHANGED FROM	DATE	CN. NO.	DRAFTS	CHECKER	ENG. APP.
A	1	REPLACED BY CA-804	9-17-63	9967		EMN	

TOLERANCES

DEC. DIM. ±
 FRAC. DIM. ± 1/32
 ANGULAR DIM. ±

DIMENSIONS IN INCHES
 UNLESS OTHERWISE SPECIFIED
 DRILL, PUNCH, COMMERCIAL STOCK
 SIZES AND MANUFACTURERS
 TOLERANCES ARE NOT INCLUDED.

IF IT IS FOUND DESIRABLE TO CHANGE ANY TOLERANCE OR OTHER DETAIL SPECIFIED ON THIS DRAWING NOTIFY THE PURCHASER PROMPTLY.	<h1>FP10006</h1>			
	USED ON			
MAXIMUM ALLOWABLE TOLERANCES HAVE BEEN DETERMINED AND DEVIATIONS WILL BE CAUSE FOR REJECTION. REMOVE ALL BURRS AND SHARP EDGES	MODEL	PROJECT NO.	ASS'Y. NO.	DATE
	CATU-1K CE5008	JUNE9/60	JUNE9/60	JUNE9/60



NOTICE TO PERSONS RECEIVING THIS DRAWING

THE TECHNICAL MATERIEL CORPORATION claims no copyright in the material disclosed herein. All drawings are prepared by our staff or by our customers. Any use of the drawings without the written consent of THE TECHNICAL MATERIEL CORPORATION is prohibited. This drawing is loaned to your assistance and is subject to recall at any time.

Property of
THE TECHNICAL MATERIEL CORPORATION
MAMARONECK, NEW YORK

REQ. ITEM	PART NO.	DESCRIPTION	SYMBOL
	3/64 TK.	TMC(Canada)LIMITED OTTAWA COIL LINKS	
COPPER			
MATERIAL			
TYPE & TEMPER			
HEAT TREAT. SPEC.			
SILVER PLATED			
FINISH & SPEC. NO.			

J.P.C.	ELEC. DES. APP.	<i>R.W. [illegible]</i>	MECH. DES. APP.
6115			
CHECKED			FINAL APPROVAL
			FP10006

ISSUE	ITEM	CHANGED FROM	DATE	CN. NO.	DRAFTS	CHECKER	ENG. APP.

TOLERANCES	
DEC. DIM. ±	SCALE 1:1 DIMENSIONS IN INCHES UNLESS OTHERWISE SPECIFIED DRILL, PUNCH, COMMERCIAL STOCK SIZES AND MANUFACTURERS TOLERANCES ARE NOT INCLUDED.
FRAC. DIM. ±	
ANGULAR DIM. ±	

IF IT IS FOUND DESIRABLE TO CHANGE ANY TOLERANCE OR OTHER DETAIL SPECIFIED ON THIS DRAWING NOTIFY THE PURCHASER PROMPTLY.

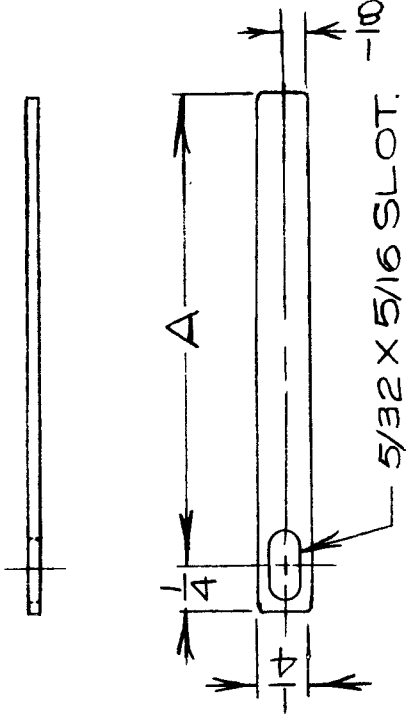
MAXIMUM ALLOWABLE TOLERANCES HAVE BEEN DETERMINED AND DEVIATIONS WILL BE CAUSE FOR REJECTION. REMOVE ALL BURRS AND SHARP EDGES

FP10007A

USED ON
PROJECT NO.
MODEL

ASS'Y. NO.
DATE

CATU1 K.C.E 5008 JUNE 9/60



TMC.PT.NO.	DIM.A
FP10007-1	2 5/8
FP10007-2	1 1/8

NOTICE TO PERSONS RECEIVING THIS DRAWING

THE TECHNICAL MATERIEL CORPORATION claims proprietary rights in the material disclosed herein. This drawing is not to be reproduced or used in any manner without the prior written permission of THE TECHNICAL MATERIEL CORPORATION. This drawing is loaned for mutual assistance and is subject to recall at any time.

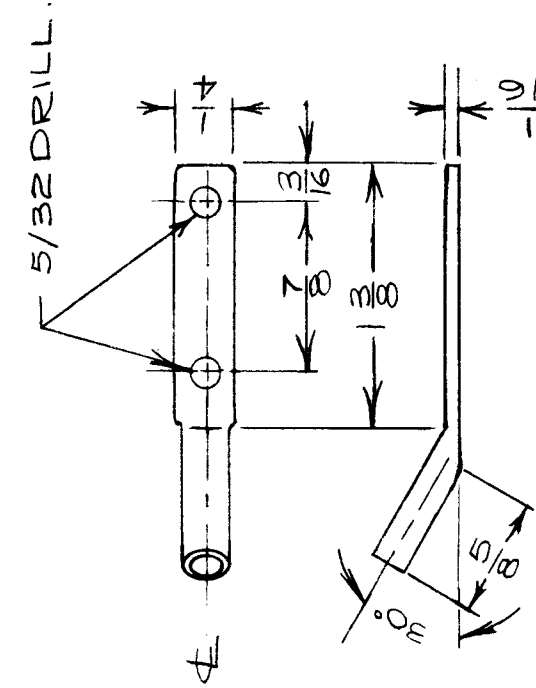
Property of:
THE TECHNICAL MATERIEL CORPORATION
MAMARONECK, NEW YORK

ISSUE	ITEM	CHANGED FROM	DATE	CN. NO.	DRAFTS	CHECKER	ENG. APP.
A		DIM. 1-1/8 WAS 1-3/8	5/9/60	JC			
TOLERANCES							
SCALE 1:1							
DIMENSIONS IN INCHES UNLESS OTHERWISE SPECIFIED							
DRILL, PUNCH, COMMERCIAL STOCK SIZES AND MANUFACTURERS TOLERANCES ARE NOT INCLUDED.							
ALL OTHERS	DEC. DIM. ±						
	FRAC. DIM. ±						
	ANGULAR DIM. ±						

REQ. ITEM	PART NO.	DESCRIPTION	SYMBOL
	3/64 TK.	TMC(Canada)LIMITED OTTAWA	
		STOCK SIZE	
		COPPER	SWITCH LINKS
		MATERIAL	
		TYPE & TEMPER	JPC
		WEIGHT PER PC.	
		HEAT TREAT. SPEC.	
		SILVER PLATED	
		FINISH & SPEC. NO.	FP10007 A
		DRAWN	ELEC. DES. APP.
		CHECKED	MECH. DES. APP.
			FINAL APPROVAL

IF IT IS FOUND DESIRABLE TO CHANGE ANY TOLERANCE OR OTHER DETAIL SPECIFIED ON THIS DRAWING NOTIFY THE PURCHASER PROMPTLY.		FR-10008	
MAXIMUM ALLOWABLE TOLERANCES HAVE BEEN DETERMINED AND DEVIATIONS WILL BE CAUSE FOR REJECTION. REMOVE ALL BURRS AND SHARP EDGES		USED ON	DATE
NOTICE TO PERSONS RECEIVING THIS DRAWING		PROJECT NO.	6/14/60

CATU-1K CE5008



THE TECHNICAL MATERIEL CORPORATION claims proprietary right in the material disclosed hereon. This drawing is issued in confidence for engineering purposes only and is not to be used or used in any way without the express written permission of THE TECHNICAL MATERIEL CORPORATION. If you are in doubt, please contact the company. This information is subject to recall at any time.

Property of
 THE TECHNICAL MATERIEL CORPORATION
 BAHAMARONECK, NEW YORK

REQ.	ITEM	PART NO.	DESCRIPTION	SYMBOL
	3/16 O.D. x 5/8 I.D.		TMC (Canada) LIMITED OTTAWA ONTARIO	
	COPPER TUBING.	STOCK SIZE	TERMINAL LUG	
	MATERIAL	WEIGHT PER PC.		
			UPC	
			DRAWN	ELEC. DES. APP. MECH. DES. APP.
			CHECKED	FINAL APPROVAL
		TYPE & TEMPER		
		HEAT TREAT. SPEC.		
ALL OTHERS		SILVER PLATED		
		FINISH & SPEC. NO.		FR-10008

ISSUE	ITEM	CHANGED FROM	DATE	CN. NO.	DRAFTS	CHECKER	ENG. APP.
TOLERANCES							
SCALE 1:1							
DIMENSIONS IN INCHES UNLESS OTHERWISE SPECIFIED							
DRILL, PUNCH, COMMERCIAL STOCK SIZES AND MANUFACTURERS TOLERANCES ARE NOT INCLUDED.							
DEC. DIM. ±	1/64						
FRAC. DIM. ±	1/64						
ANGULAR DIM. ±	—						

IF IT IS FOUND DESIRABLE TO CHANGE ANY TOLERANCE OR OTHER DETAIL SPECIFIED ON THIS DRAWING NOTIFY THE PURCHASER PROMPTLY.

MAXIMUM ALLOWABLE TOLERANCES HAVE BEEN DETERMINED AND DEVIATIONS WILL BE CAUSE FOR REJECTION. REMOVE ALL BURRS AND SHARP EDGES

FP10009

USED ON

ASS'Y. NO.

PROJECT NO.

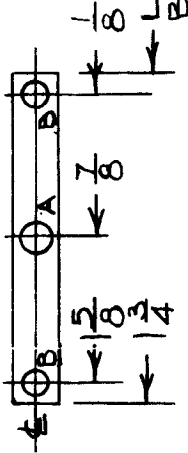
MODEL

DATE

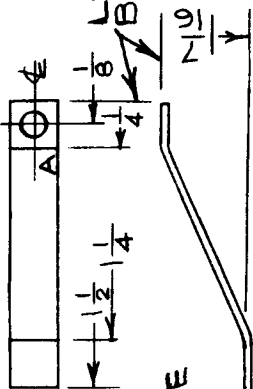
AFU-1 E1143-P

JUNE 1/61

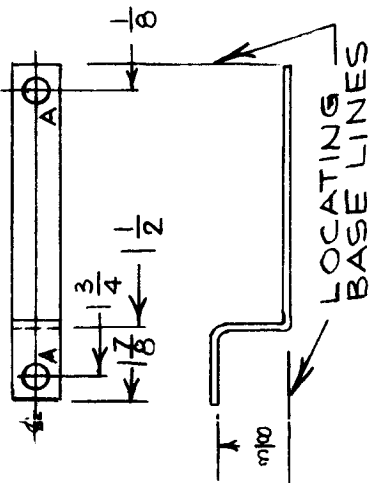
FP10009-1



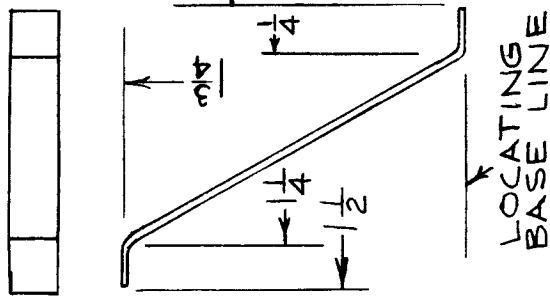
FP10009-2



FP10009-4



FP10009-5



HOLE A - 1/8 DIA.
HOLE B - 5/32 DIA.

REQ. ITEM	PART NO.	DESCRIPTION	SYMBOL
		TMC (Canada) LIMITED OTTAWA ONTARIO	
		CONNECTING STRAPS	
		ANTENNA FILTER UNIT	
		JPC	
		DRAWN	
		CHECKED	
		ELEC. DES. APP.	
		MECH. DES. APP.	
		FINAL APPROVAL	
		FP10009	

REQ. ITEM	PART NO.	DESCRIPTION	SYMBOL
		1/4" X .022" THICK.	
		STOCK SIZE	
		COPSTRIP 10" TOT.	
		MATERIAL	
		WEIGHT PER PC.	
		TYPE & TEMPER	
		HEAT TREAT. SPEC.	
		\$245-SILVER PLATE.	
		FINISH & SPEC. NO.	

ISSUE	ITEM	CHANGED FROM	DATE	CN. NO.	DRAFTS	CHECKER	ENG. APP.
TOLERANCES							
SCALE 1:1							
DIMENSIONS IN INCHES UNLESS OTHERWISE SPECIFIED							
DRILL, PUNCH, COMMERCIAL STOCK SIZES AND MANUFACTURERS TOLERANCES ARE NOT INCLUDED.							
ALL OTHERS	DEC. DIM. ±	FRAC. DIM. ± 1/64"					
	ANGULAR DIM. ±						

FP 10010

STANDARD DRAWING

ISSUE	ITEM	CHANGED FROM	DATE	CH. NO.	DRAFTS	CHECKER	ENG. APP.	REQ.	ITEM	PART NO.	DESCRIPTION	SYMBOL
Ø		REL. TO PROD.	SEPT 7/67		RPL		[Signature]					

TMC PART NO.	MFGR PART NO.	BOARD THICKNESS	MATERIAL
FP 10010-1	75764-2	1/16	ABS. PLASTIC MATERIAL NATURAL COLOUR (BONE)
FP 10010-2	75764-3	3/32	ABS. PLASTIC MATERIAL NATURAL COLOUR (BONE)

NOTE:- EXTRACTOR SUPPLIED WITH SPRING PIN.

PC. BOARD

MOUNTING DETAIL

MFGR. S401-254

MODEL	PROJECT NO.	ASSY. NO.	DATE
			AUG 31/67

TMC (Canada) LIMITED OTTAWA	
EXTRACTOR, P.C. BOARD	
STOCK SIZE	WEIGHT PER PC.
MATERIAL	
TYPE & TEMPER	
HEAT TREAT. SPEC.	
FINISH & SPEC. NO.	

IF IT IS FOUND DESIRABLE TO CHANGE ANY TOLERANCE OR OTHER DETAIL SPECIFIED ON THIS DRAWING NOTIFY THE PURCHASER PROMPTLY.	
SCALE	
DIMENSIONS IN INCHES UNLESS OTHERWISE SPECIFIED	
DRILL, PUNCH, COMMERCIAL STOCK SIZES AND MANUFACTURERS TOLERANCES ARE NOT INCLUDED.	

MAXIMUM ALLOWABLE TOLERANCES HAVE BEEN DETERMINED AND DEVIATIONS WILL BE CAUSE FOR REJECTION. REMOVE ALL BURRS AND SHARP EDGES	
TOLERANCES	
DEC. DIM. ±	
FRAC. DIM. ±	
ANGULAR DIM. ±	

ELEC. DES. APP.	MECH. DES. APP.
DRAWN	
CHECKED	
FINAL APPROVAL	
FP 10010	Ø