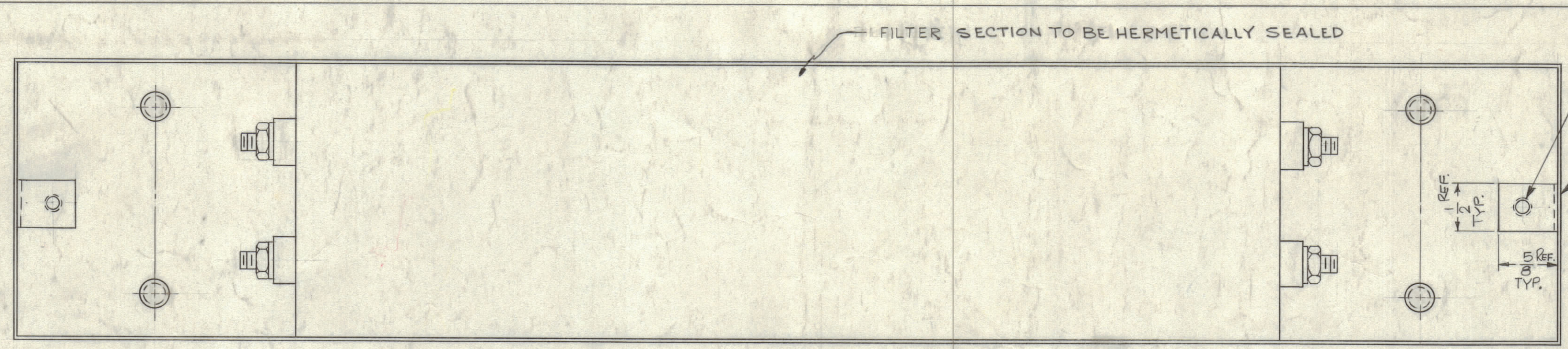
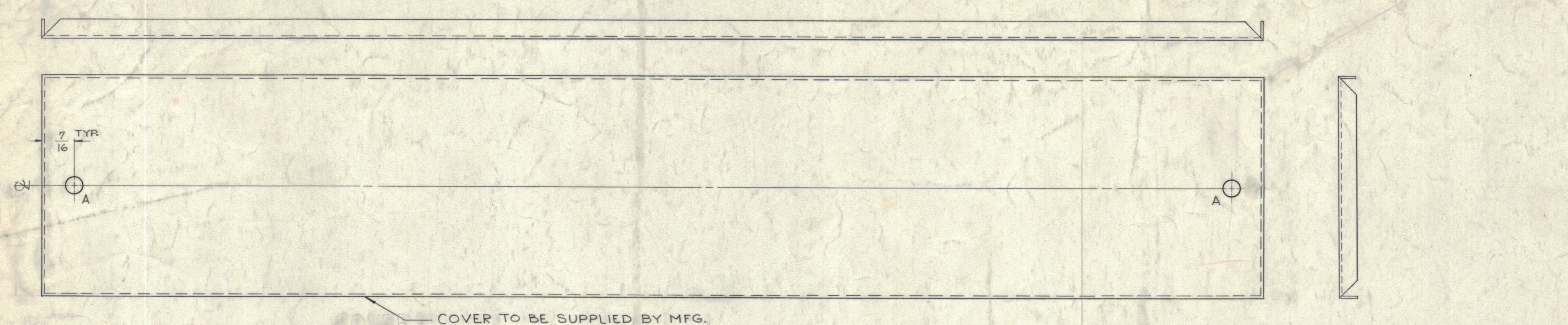
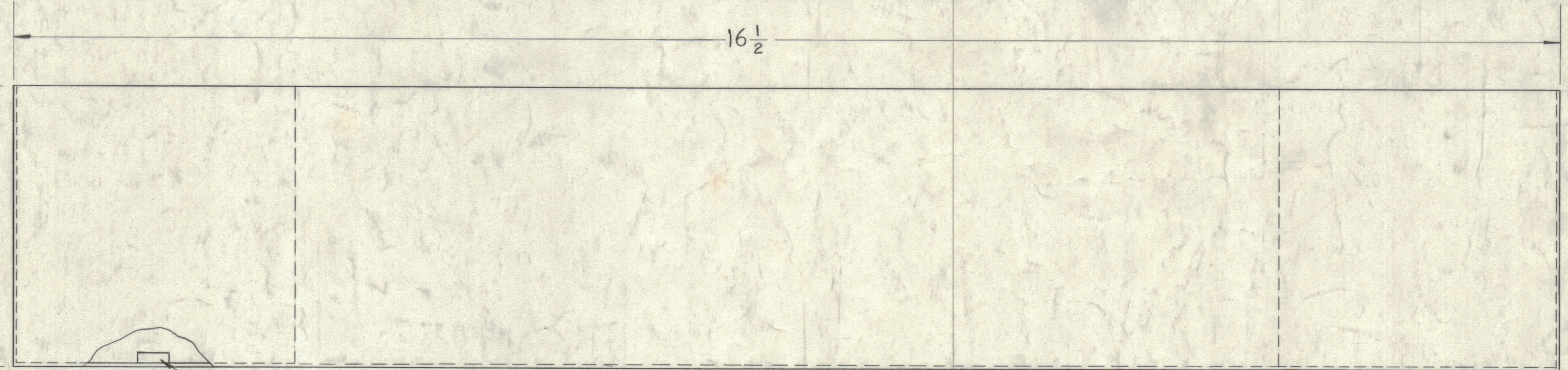
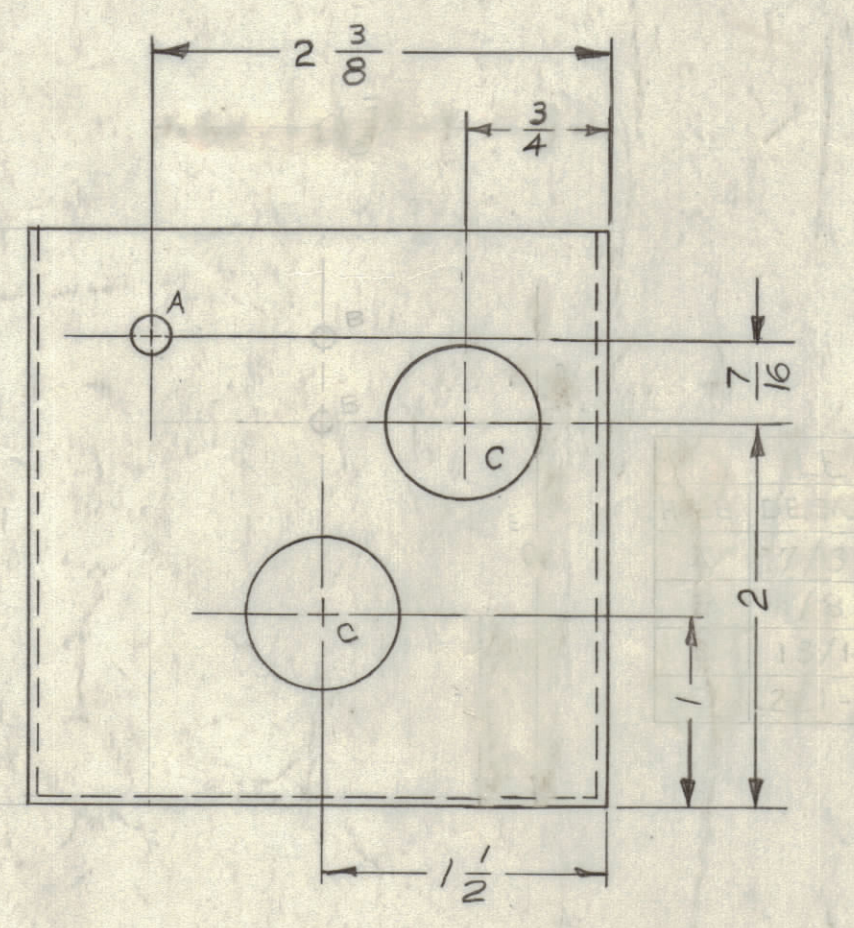
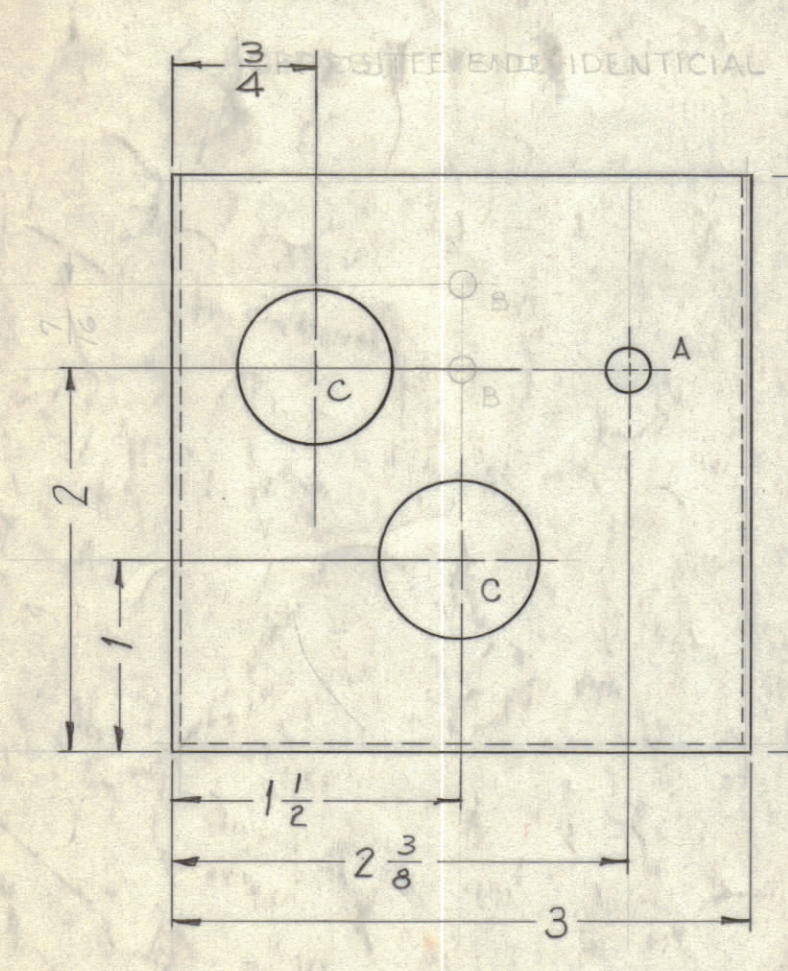


ZONE		SYM	DESCRIPTION	DATE	E.M.N. NO.	DRAFT	CHKD	APPD
D4	A		ADDED RIGHT SIDE VIEW. "C" HOLE TO LEFT SIDE VIEW	8-5-63	9665	AK	AK	AK
D3	B		ONE "C" HOLE ADDED	4-6-62	11175	AM	AK	AK
	C		ADD. BRKTS (2); DBLE. "B" HOLES (4); ADD. FINISH "TIN DIP"	3-14-61	15949	MLB	AK	AK



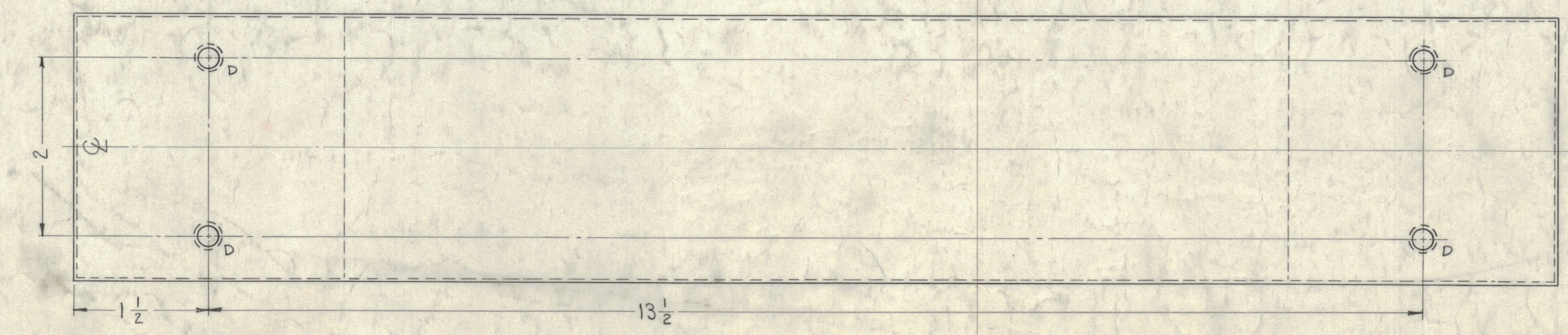
**SPECIFICATIONS**

POWER FREQUENCY ~ 0 THRU 400 CPS  
 VOLTAGE ~ 250 VAC/600 VDC  
 CURRENT ~ 20 AMPERES MAX.  
 ATTENUATION ~ 60 DB MIN. FROM 150 KC THRU 10KMC  
 CASE MATERIAL ~ STEEL  
 TERMINALS ~ SCREW TYPE, 8-32 THD.  
 MOUNTING ~ (4) 8-32 SCREWS (SEE DIMS)



8-32 SWAGE NUTS, MOUNTED IN "D" HOLES, TO BE SUPPLIED BY MFG. (4 REQ)

HOLE	LEGEND DESCRIPTION	REQ.
A	7/32 DIA.	4
B	DELETED	
C	13/16 DIA.	4
D	.221-.224 DIA.	4



**NOTICE TO PERSONS RECEIVING THIS DRAWING**

THE TECHNICAL MATERIEL CORPORATION claims proprietary right in the material disclosed hereon. This drawing is issued in confidence for engineering information only and may not be reproduced or used to manufacture anything shown hereon without permission from THE TECHNICAL MATERIEL CORPORATION to the user. This drawing is loaned for mutual assistance and is subject to recall at any time.

Property of:  
 THE TECHNICAL MATERIEL CORPORATION  
 MAMARONECK, NEW YORK

STANDARD DRAWING

NOTES

1	RAK-21B-1	A-2483
QTY./UNIT	MODEL USED OR CODE	ASSY. NO.
SCALE 3/401-183		

REQ'D.	ITEM	PART NUMBER	DESCRIPTION	SYMBOL
R. KOHN LIST OF MATERIAL				
MATERIAL STEEL		THE TECHNICAL MATERIEL CORP. MAMARONECK, NEW YORK		
FINISH TIN DIP		TITLE FILTER, RADIO INTERFERENCE		
UNLESS OTHERWISE SPECIFIED DIMENSIONS ARE IN INCHES AND INCLUDE CHEMICALLY APPLIED OR PLATED FINISHES		DRAWN	DATE 8-5-62	FINAL APPROVAL
DECIMALS FRACTIONS		CHECKED	DATE 8-16-62	DATE
X ± .05		ELECT. DES. R. KOHN	DATE 8/16/62	FI-102
XX ± .01		MECH. DES. R. KOHN	DATE 8/16/62	REV. LTR.
XXX ± .005		TOLERANCES ± 1/64 ANGLE ± 0° 30'		

FI-102