

STANDARD DRAWING

IF IT IS FOUND DESIRABLE TO CHANGE ANY TOLERANCE OR OTHER DETAIL SPECIFIED ON THIS DRAWING NOTIFY THE PURCHASER PROMPTLY.

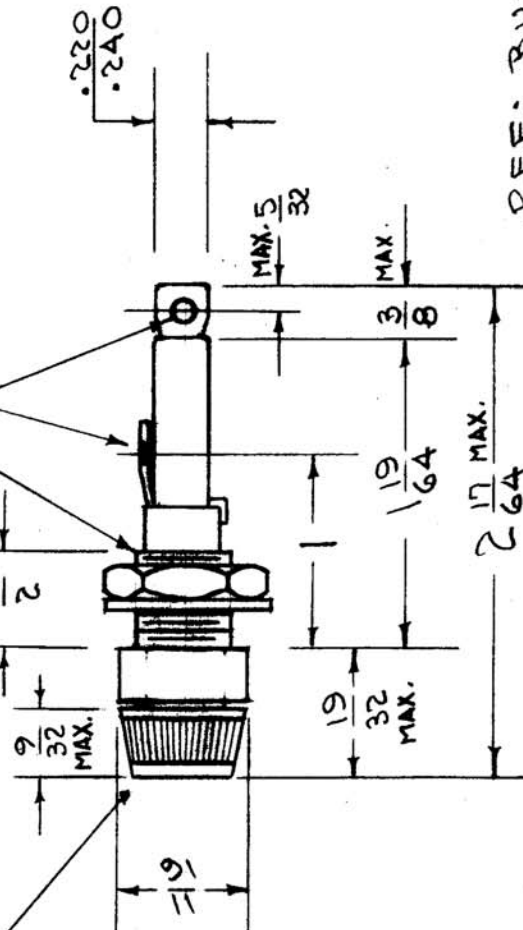
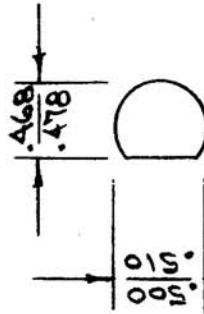
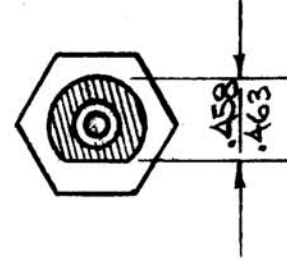
MAXIMUM ALLOWABLE TOLERANCES HAVE BEEN DETERMINED AND DEVIATIONS WILL BE CAUSE FOR REJECTION. REMOVE ALL BURRS AND SHARP EDGES

T.M.C. NO.	BUSSMAN No.	REMARKS.
FH-100-1	HKP	END TERM. MOVEABLE
FH-100-2	HKP-M	" " STATIONARY
FH-100-3	HKP-H	HKP-M WITH TEST HOLE IN KNOB

When supplying cap for spare parts, use T.M.C. DWG. HB-107

NUT & NEOPRENE WASHER FURNISHED BY MFG.

$\frac{1}{2}$ X 2A THDS.



REF: BUSSMAN MFG. CO.

DRILLING PLAN DIM. FOR REF. ONLY.

USED ON
MODEL PROJECT NO. ASSY. NO. DATE

FH-100-1

REQ. ITEM	PART NO.	DESCRIPTION	SYMBOL
#	#	THE TECHNICAL MATERIEL CORP. MAMARONECK, NEW YORK	
STOCK SIZE		FUSE EXTRACTOR POST	
MATERIAL	WEIGHT PER PC.		
#	#		
TYPE & TEMPER			
#			
HEAT TREAT. SPEC.			
#			
FINISH & SPEC. NO.			

ISSUE ITEM	CHANGED FROM	DATE	CN. NO.	DRAFTS CHECKER	ENG. APP.
B 2	DIMS CLARIFIED	2-9-63	8210		
A 1	FUSE LETTERING CLARIFIED	5/7/67	1		
	CAP NOTE ADDED	9/10/64			
	REDRAWN - NO CHANGE				
TOLERANCES		SCALE			
DEC. DIM. ±		DRILL, PUNCH, COMMERCIAL STOCK			
FRAC. DIM. ±		SIZES AND MANUFACTURERS			
OTHERS		TOLERANCES ARE NOT INCLUDED.			