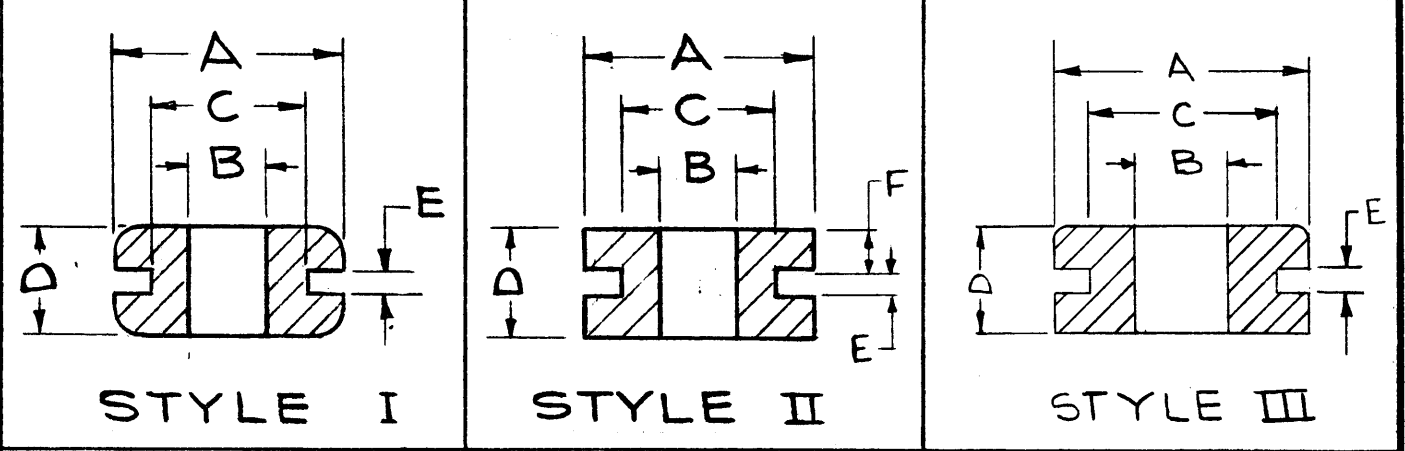


TMC NO.	MFRS REF	MFRS NO.	STYLE	A	B	C	D	E	F
EY 102-1	A	1125	I	5/16	1/8	3/16	3/16	1/16	
EY 102-2	A	1126	I	7/16	3/16	5/16	3/16	1/16	
EY 102-3	*						11/32±1/6		
EY 102-4	B	GB2252	I	5/8	5/16	7/16	1/4±1/32	1/16	
EY 102-5	B	GB225	I	5/8	3/8	1/2	1/4±1/32	1/16	
EY 102-6	A	1124	I	3/4	7/16	9/16	1/4±1/32	1/16	
EY 102-7	A	1127	I	1 1/16	1/2	3/4	5/16±1/16	1/16	
EY 102-8	A	1128	I	1 1/8	5/8	7/8	5/16±1/16	1/16	
EY 102-9	A	1129	I	1 1/16	9/16	13/16	5/16±1/16	1/16	
EY 102-10	A	1130	I	1	3/4	7/8	5/32	1/32	
EY-102-11	A/B	1114/GB210	I	11/32	1/8	1/4	3/16	1/16	
EY 102-12	**								
EY 102-13	A/B	1119/GB220	I	9/16	1/4	3/8	1/4±1/32	1/16	
EY 102-14	***								
EY 102-15	B	GB 230	I	13/16	1/2	5/8	9/32±1/16	1/16	
EY 102-16	B	GB 324	I	19/32	5/16	7/16	3/8±1/32	1/8	
EY 102-17	A/B	1164A/GB1102-2	I	1 1/16	1/2	13/16	11/32±1/32	1/8	
EY 102-18	A/B	AN931-A16-22	I	1 3/4	1	1 3/8	1/2±1/16	1/8	
EY 102-19	A/B	AN931-A12-14	I	1 1/8	3/4	7/8	3/8±1/32	1/8	
EY 102-20	B	GB-3251	I	5/8	1/4	3/8	3/8±1/32	1/8	
EY 102-21	B	GF-325	III	5/8	3/8	1/2	5/16±1/16	1/8	
EY 102-22	A/B	AN931-12-14	I	1 1/8	3/4	7/8	5/16±1/16	1/16	
EY 102-23	B	GF-330	III	13/16	1/2	5/8	11/32±1/32	1/8	
EY 102-24	A	4414-26	II	1 13/16	1 1/4	1 1/2	7/16±1/16	1/8	5/32
EY 102-25	***								
EY 102-26	B	GS-2192	II	17/32	7/32	11/32	3/8±1/16	1/16	5/32
EY 102-27	A/B	AN931-A3-5	I	7/16	3/16	5/16	1/4±1/32	1/8	
EY 102-28	B	AN931-A11-16	I	1-5/16	11/16	1	7/16	1/8	
EY 102-29	A/C	1133/Z 2068	I	1	1/4	3/4	3/8	1/16	
EY 102-30	C	Z 3050	I	2	1-5/16	1-5/8	7/16	1/8	
EY 102-31	C	Z 2278	II	1/2	3/16	5/16	13/32	1/16	1/16
EY 102-32	A/B	AN931A12-17	I	1-3/8	3/4	1-1/16	7/16	1/8	
EY 102-33	A/B	AN931B3-5	I	7/16	3/16	5/16	5/16	3/16	
EY 102-34	B	AN93111-16	I	1-5/16	11/16	1	3/8	1/16	
EY 102-35	B	320	III	9/16	1/4	3/8	5/16	1/8	

REVISIONS						
SYM	DESCRIPTION	DATE	E.M.N. NO.	DRAFT	CHKD	APPD
N	REDRAWN - ADDED EY-102-26, MFRS REF & STYLE. ON PICTORIAL ADDED STYLE II.	2-7-63	8128	YMS		
P	DWG UPDATED & CLARIFIED PER EMN. 10263	10-22-63	10263			
R	DWG UPDATED & CLARIFIED	12-17-63	10549			
S	EY-102-28, -29, -30 ADDED.	7-20-64	11866	SRG		
T	F" ADD. ON STYLE II. F" COLUMN & EY102-31 ADD. TO CHART.	10-20-64	12669			
U	EY-102-32 ADD., TO (-24) & (-26) F - 5/32 ADDED	11-3-64	12837	NB		
V	EY-102-33 ADDED	12-17-64	13102	HLA		
W	PIN CHART (-5) A WAS 11/16; B WAS 5/16; (-14) VAL. DELETED. "X" ADD. IN MFRS REF. COL; (-28) MFRS NO. WAS AN116; (-33) MFRS NO. WAS AN931B3-5; NOTES: *** ADDED.	2/15/65	13452			
Y	EY 102-34 ADDED	2/14/68	18770			FB
Z	EY 102-35 ADDED	1/7/69	19124			

EY 101



* — USE EY 102-13
 ** — USE EY 102-2
 *** — USE EY 102-17
 **** — USE EY 102-5

STANDARD DRAWING

Q'TY./UNIT	MODEL USED ON	ASS'Y. NO.
SCALE	CODE	A - S401-89 B - S401-109 C - S401-231

THE CONTENTS OF THIS DRAWING ARE THE EXCLUSIVE PROPERTY OF THE TECHNICAL MATERIEL CORP. ITS UNAUTHORIZED USE OR REPRODUCTION IN WHOLE OR IN PART IS STRICTLY FORBIDDEN.

NOTES

REQ'D.	ITEM	PART NUMBER	DESCRIPTION	SYMBOL
LIST OF MATERIAL				
MATERIAL		NEOPRENE OR RUBBER		
FINISH		TITLE		
		GROMMET, RUBBER		
UNLESS OTHERWISE SPECIFIED DIMENSIONS ARE IN INCHES AND INCLUDE CHEMICALLY APPLIED OR PLATED FINISHES		DRAWN	DATE	FINAL APPROVAL
		YMS	2-14-63	
		CHECKED	DATE	
			2-15-63	
		ELECT. DES.	DATE	
		MECH. DES.	DATE	
		EY 102		Z
		SHEET		REV. LTR.