

IF IT IS FOUND DESIRABLE TO CHANGE ANY TOLERANCE OR OTHER DETAIL SPECIFIED ON THIS DRAWING NOTIFY THE PURCHASER PROMPTLY.

MAXIMUM ALLOWABLE TOLERANCES HAVE BEEN DETERMINED AND DEVIATIONS WILL BE CAUSE FOR REJECTION. REMOVE ALL BURRS AND SHARP EDGES

STANDARD DRAWING

EY-101 C

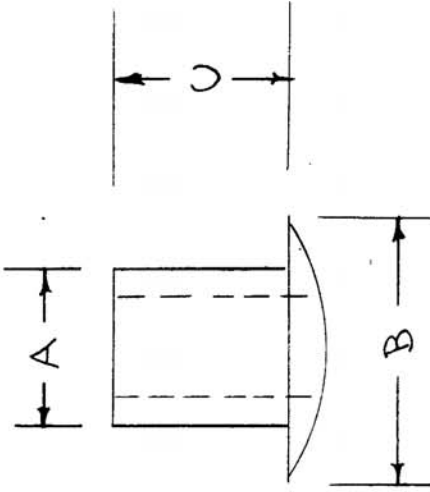
USED ON

DATE

ASSY. NO.

PROJECT NO.

MODEL



T.M.C. NO.	CAT. NO.	A	B	C	METAL THICK.	MAT.	FINISH
EY-101-1	A-1236	.097	.170	.187	.013	BRASS	NICKEL
EY-101-2	A-737	.185	.285	.182	.013	BRASS	NONE
EY-101-3	A-2161	.089	.150	.156	.009	BRASS	NONE
EY-101-4	-	-	-	-	-	-	-
EY-101-5	A-2301	.064	.138	.140	.0065	BRASS	NONE
EY-101-6	A-2013	.157	.235	.102	.010	BRASS	NONE

REF: EDWIN B. STIMPSON CO.

REQ. ITEM	DESCRIPTION	PART NO.	SYMBOL
	THE TECHNICAL MATERIEL CORP. MAMARONECK, NEW YORK		
	EYELETS, ROLLED FLANGE		
	SEE MULTITABLE		
	MATERIAL	WEIGHT PER PC.	
	TYPE & TEMPER		
	DRAWN	ELEC. DES. APP.	MECH. DES. APP.
	CHECKED		
	HEAT TREAT. SPEC.		
	FINISH & SPEC. NO.		

ISSUE ITEM	CHANGED FROM	DATE	CN. NO.	DRAFTS CHECKER	ENG. APP.
C	EY-101-9, 5&6 ADDED	12/29/67	18692	ENT	
B	EY-101-3 ADDED TO CHART	8-23-62	7134	G.S.	
A	EY-101-2 ADDED TO CHART	2-16-62	6375	G.S.	
-	REDRAWN, NO CHG.	1/1/54	-	OSB	

TOLERANCES	
DEC. DIM. ±	DRILL, PUNCH, COMMERCIAL STOCK
FRAC. DIM. ±	SIZES AND MANUFACTURERS
OTHERS	TOLERANCES ARE NOT INCLUDED.
ANGULAR DIM. ±	

FINAL APPROVAL
EY-101 C