

# STANDARD DRAWING

# EY-100

IF IT IS FOUND DESIRABLE TO CHANGE ANY TOLERANCE OR OTHER DETAIL SPECIFIED ON THIS DRAWING NOTIFY THE PURCHASER PROMPTLY.

MAXIMUM ALLOWABLE TOLERANCES HAVE BEEN DETERMINED AND DEVIATIONS WILL BE CAUSE FOR REJECTION. REMOVE ALL BURRS AND SHARP EDGES

RELEASED

USED ON

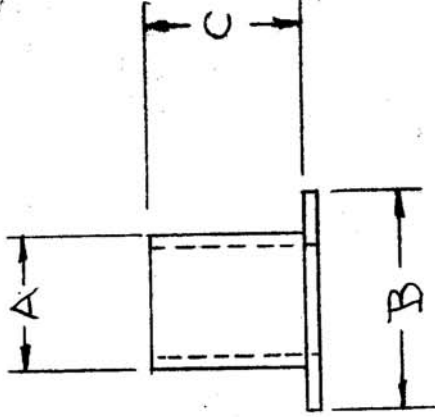
PROJECT NO.

MODEL

ASSY. NO.

TRC NO.	CAT. NO.	A	B	C	METAL THK.	MAT.	FINISH
EY-100-1	A-1527	.121	.210	.157	.016	BRASS	NICKEL
EY-100-2	A-1526	.121	.210	.214	.016	BRASS	NICKEL
EY-100-3	A-740	.185	.285	.102	.009	BRASS	NICKEL
EY-100-4	A-1523	.062	.115	.171	.008	BRASS	NICKEL
EY-100-5	A-1690	.062	.115	.158	.008	BRASS	NONE
EY-100-6	A-791	.495	.595	.115	.018	BRASS	NICKEL
EY-100-7	A-1472	.138	.180	.258	.010	BRASS	NICKEL
EY-100-8	A-1225	.127	.240	.115	.010	BRASS	NICKEL

(CANADIAN SPECIAL)



DEC 30 1963

DEC 1963

DEC 1963

REP: EDWIN B. STIMPSON CO.

REQ. ITEM		PART NO.		DESCRIPTION		SYMBOL	
				THE TECHNICAL MATERIEL CORP.			
				MAMARONECK, NEW YORK			
				EYELET, FLAT FLANGE			
G 1 EY-100-8 ADDED		A.M. 1156		DRAWN		G.T.O.	
F 1 EY-100-7 ADDED		8565		ELEC. DES. APP.		G.T.O.	
E 1 EY-100-G ADDED		6		CHECKED		G.T.O.	
D 5 EY-100-5 ADDED		5		FINAL APPROVAL		G.T.O.	
C 4 EY-100-4 ADDED		4					
B 3 REDRAWN		3					
ISSUE ITEM		DATE		CN. NO.		DRAFTS-CHECKER/ENG. APP.	
CHANGED FROM		2-24-53					
TOLERANCES		SCALE					
DEC. DIM. ±							
FRAC. DIM. ±							
OTHERS							
ANGULAR DIM. ±							
DRILL, PUNCH, COMMERCIAL STOCK SIZES AND MANUFACTURERS TOLERANCES ARE NOT INCLUDED.							
SEE TABLE		HEAT TREAT. SPEC.					
FINISH & PEC. NO.							

EY-100