

REVISIONS						
ZONE	LTR	DESCRIPTION	DATE	E.M.N.NO	DRAFT	CHKD APPD
	X	EXP. RELEASE	4/2/69	X	LH	JDe
	XI	NOTE 5 ON OVERALL SPEC REVISED	5/6/69	X	CV	JDe
	Ø	ORIGINAL RELEASE FOR PRODUCTION	5/8/69	Ø	CV	

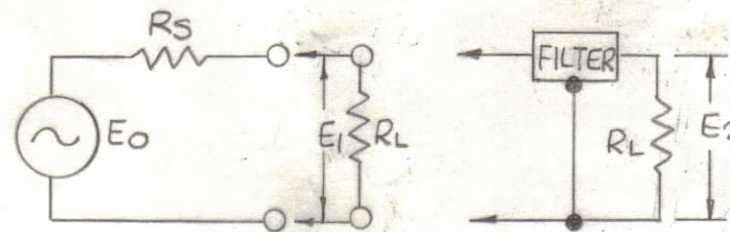
OVERALL SPECIFICATIONS OF EQ293 EQUALIZER AND FX.293 FILTER

1. dB MEASUREMENTS: ALL dB MEASUREMENTS ARE RELATIVE TO MAXIMUM SIGNAL RESPONSE IN THE PASSBAND
2. -1 dB POINTS: 253.260kHz MAX AND 256.035kHz MIN
3. -75 dB POINTS: NOT LOWER THAN 252.790kHz AND NOT HIGHER THAN 256.530 kHz
4. RIPPLE: 0.5 dB MAX BETWEEN 253.300kHz AND 255.870kHz
5. ALL SPURIOUS RESPONSES AT LEAST 65 dB DOWN BETWEEN 200kHz AND 300kHz

6. OVERALL MAXIMUM ENVELOPE DELAY DISTORTION TO BE LESS THAN 500 µs BETWEEN 253.370 & 255.820 kHz

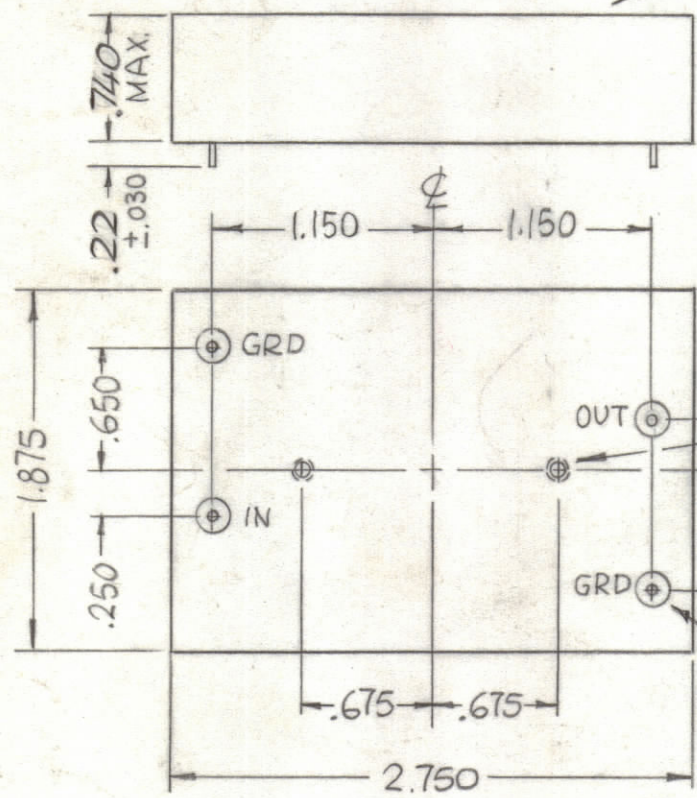
PARTICULAR SPECIFICATIONS

1. TYPE: OUTER, UPPER SIDEBAND EQUALIZER
2. INSERTION LOSS 4 dB MAX
3. SOURCE AND LOAD IMPEDANCE: 500 ±5% OHMS
4. OPERATING TEMPERATURE: 0 DEGREES TO 65 DEGREES C
5. THIRD ORDER, IN-BAND INTERMODULATION DISTORTION WILL BE AT LEAST 65 dB DOWN FROM THE REFERENCE LEVEL OF EITHER OF TWO EQUAL 30 mv TONES IN THE FILTER PASSBAND, SELECTED IN A MANNER SUCH THAT THE THIRD ORDER-PRODUCT FALLS IN THE FILTER PASSBAND
6. MAXIMUM SIGNAL INPUT: 3 VOLTS rms
7. NON OPERATING TEMP RANGE: -62 DEGREES C TO +75 DEGREES C
8. PEAK SHOCK CAPABILITY: 20 G WITHIN A PERIOD OF 10 MILLISECONDS APPLIED ALONG THREE MUTUALLY PERPENDICULAR AXES
9. VIBRATION CAPABILITY: 5 Hz TO 50 Hz AT AN AMPLITUDE OF 1.3 G



LETTERING & TMC P/N WITH LATEST REV LETTER

THE TECHNICAL MATERIEL CORP
MAMARONECK NEW YORK
EQ 293



4-40 UNC-2B
4 FULL THREADS DEEP
(2 PLACES)

MECHANICAL SPEC

CASE:
MATERIAL: 24 GA CR2 STEEL'S STEEL
DIMENSIONS: AS SHOWN
FINISH: POWDER BLASTED NICKEL
MARKING: AS INDICATED
UNIT TO BE HERMETICALLY SEALED

TERMINALS 4 PL
STEEL WIRE
.040 DIA OR EQUIVALENT
GLASS OR TEFLON INSULATION

1	MSAR-5	
QTY / UNIT	MODEL USED ON	ASS'Y NO.
APPLICATION		
	CODE S401-451	
	A	

NOTICE TO PERSONS RECEIVING THIS DRAWING
THE TECHNICAL MATERIEL CORPORATION claims proprietary right in the material disclosed hereon. This drawing is issued in confidence for engineering information only and may not be reproduced or used to manufacture anything shown hereon without permission from THE TECHNICAL MATERIEL CORPORATION to the user. This drawing is loaned for mutual assistance and is subject to recall at any time.

INSERTION LOSS IS DEFINED AS $20 \log A$, WHERE $A = |E_2/E_1|$, $R_s =$ SOURCE IMPEDANCE, $R_L =$ LOAD IMPEDANCE SEE SKETCH. E_o IS FIXED AT ANY FREQUENCY IN THE PASSBAND OF THE FILTER.
MARKING PROCESS: AS PER TMC SPECIFICATION S727
LETTERING: 1/8 HIGH BLACK GOTHIC, LOCATED AS SHOWN

QTY. REQ.	ITEM	PART NO.	DESCRIPTION	SYMBOL
O. POSE LIST OF MATERIAL				
FINISH APPROVAL		DATE	THE TECHNICAL MATERIEL CORP.	
MECH. DES.		DATE	MAMARONECK, NEW YORK	
ELECT. DES.		DATE	BANDPASS EQUALIZER	
CHECKED		DATE	CHANNEL A2	
DRAWN		DATE		
MATERIAL			SIZE	CODE IDENT. NO. DWG NO.
FINISH			C	82679 EQ 293
			SCALE	1:1 SHEET OF

EQ 293