









THE CONTENTS OF THIS DRAWING ARE THE EXCLUSIVE PROPERTY OF THE TECHNICAL MATERIEL CORP. ITS UNAUTHORIZED USE OR REPRODUCTION IN WHOLE OR IN PART IS STRICTLY FORBIDDEN.

REQ. PER UNIT

1

USED ON

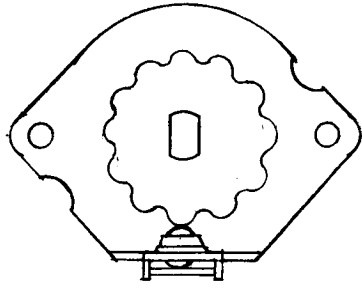
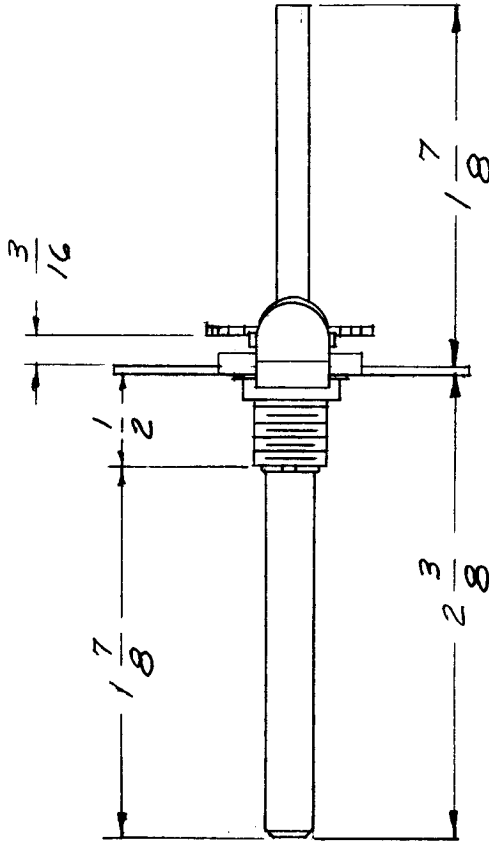
ASSY. NO.

HFI-1

DATE

1-10-62

DT-107



UNLESS OTHERWISE SPECIFIED:  
DIMENSIONS ARE IN INCHES  
TOLERANCES ON  
FRAC.  $\pm 1/64$  DEC.  $\pm .005$  ANGLES  $\pm 1/2^\circ$

A

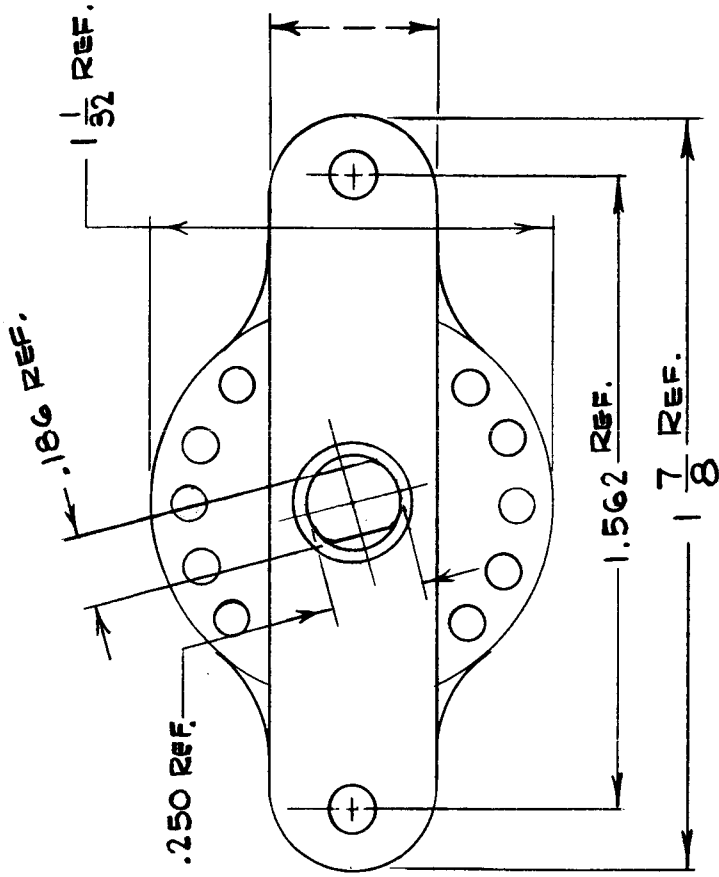
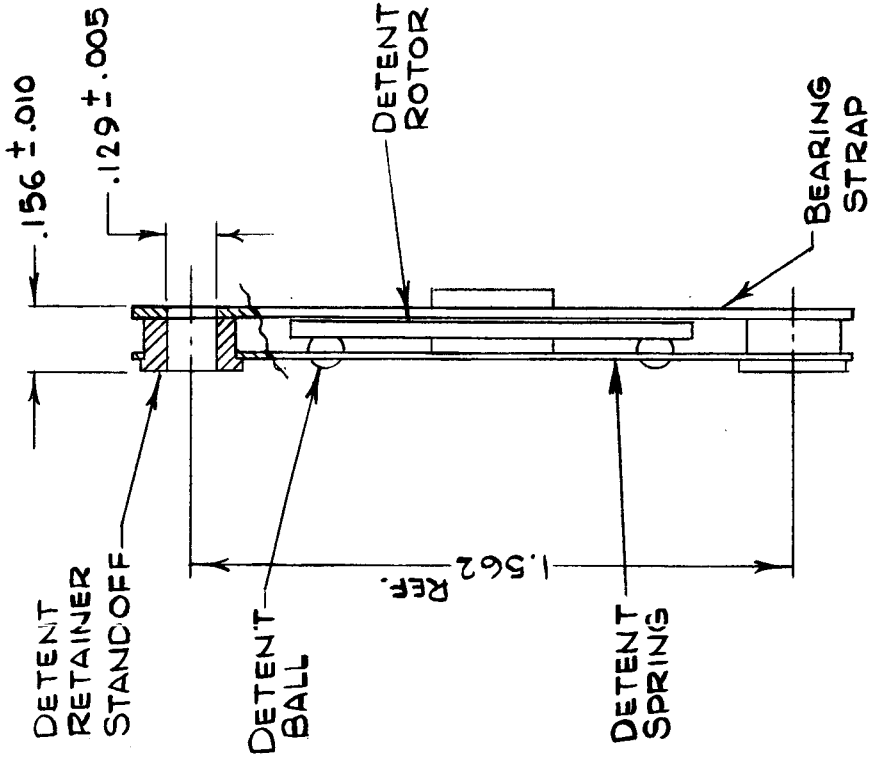
SCALE: 3/4" = 1" (31-11898-1)

MAXIMUM ALLOWABLE TOLERANCES HAVE BEEN DETERMINED AND ANY DEVIATIONS WILL BE CAUSE FOR REJECTION. REMOVE ALL BURRS AND SHARP EDGES

REQ. ITEM	PART NO.	DESCRIPTION	SYMBOL
		THE TECHNICAL MATERIEL CORP. MAMARONECK, NEW YORK	
		DETENT, SWITCH (ROTARY)	
		CR	W.S.
		SHAFT STEEL	5M
		CADMIUM PLATED	
		FINISH & SPEC. NO.	DT-107
		CHECKER	
		DRAFTS	
		CH. NO.	
		DATE	
		ENG. APP.	
		CHECKER	
		DRAWN	
		HEAT TREAT. SPEC.	
		TYPE & TEMPER	
		MECH. DES. APP.	
		ELEC. DES. APP.	
		MECH. DES. APP.	
		FINAL APPROVAL	

REQ. PER UNIT	USED ON		DATE
	MODEL	ASSY. NO.	
	LRCC-1	A5014	7-6-65
	LRCM-1		7-6-65

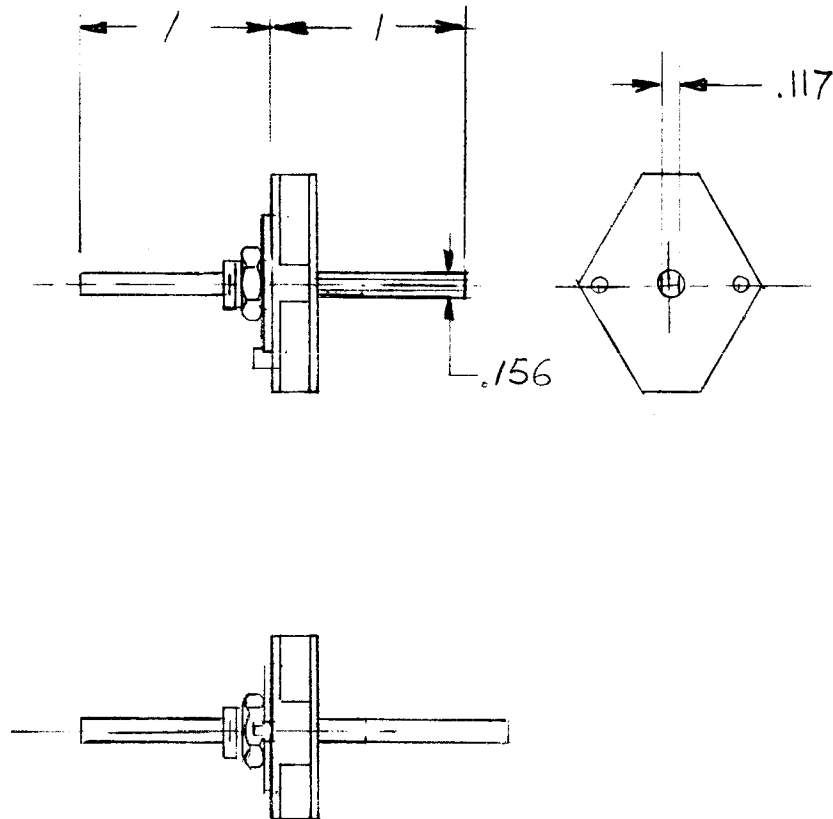
DT109  $\emptyset$



REQ. ITEM	PART NO.	EATON	DESCRIPTION	SYMBOL
			THE TECHNICAL MATERIEL CORP. MAMARONECK. NEW YORK	
			DETENT, ROTARY ASSY.	
			16 POSITION	
		H. AUSTIN	<i>[Signature]</i>	
		DRAWN	CHECKED	FINAL APPROVAL
			HEAT TREAT. SPEC.	
			MATERIAL	
			STOCK SIZE	
			FINISH & SPEC. NO.	DT109 $\emptyset$
			ELEC. DES. APP. MECH. DES. APP.	
			ML <i>[Signature]</i>	

SYM	DESCRIPTION	DATE	CH. NO.	DRAFTS	CHECKER	ENG. APP.
$\emptyset$	ORIGINAL RELEASE FOR PRODUCTION	8/4/66	$\emptyset$	CV.		
UNLESS OTHERWISE SPECIFIED DIMENSIONS ARE IN INCHES AND INCLUDE CHEMICALLY APPLIED OR PLATED FINISHES						
DECIMALS	FRACTIONS	SCALE				
.X ± .05	± 1/64	S401-281(149700-009)				
.XX ± .01	ANGLES	C				
.XXX ± .005	± 0° 30'					

APPLICATION			REVISIONS						
QTY	MODEL USED ON	ASS'Y NO.	LTR	DESCRIPTION	DATE	E.M.N.NO	DRAFT	CHKD	APPD
	GPR110		X Ø	PIN & LOCATION DIMS. DEL. ORIGINAL RELEASE FOR PRODUCTION	1-10-76 5-23-77		GDL	W.P.	*



SPECIFICATIONS:  
30° THROW

5401  
(IEE SHADOW)  
P/N: ESK-10-30

UNLESS OTHERWISE SPECIFIED DIMENSIONS ARE IN INCHES AND INCLUDE CHEMICALLY APPLIED OR PLATED FINISHES		REQ'D ITEM	PART NUMBER	DESCRIPTION	SYM.
DECIMALS X ± .05 .XX ± .01 XXX ± .005	FRACTIONS 1/64 ANGLES 0°-30°	F. BUDETTI LIST OF MATERIAL			
MATERIAL		FINAL APPROVAL	DATE	THE TECHNICAL MATERIEL CORP. MAMARONECK, NEW YORK	
FINISH		MECH. DES.	DATE	DETENT SW 30°	
		ELECT. DES.	DATE		
		CHECKED	DATE		
		DRAWN	DATE		

<p><b>NOTICE TO PERSONS RECEIVING THIS DRAWING</b> THE TECHNICAL MATERIEL CORPORATION claims proprietary right in the material disclosed hereon. This drawing is issued in confidence for engineering information only and may not be reproduced or used to manufacture anything shown hereon without permission from THE TECHNICAL MATERIEL CORPORATION to the user. This drawing is loaned for mutual assistance and is subject to recall at any time.</p>				SIZE A	CODE IDENT. NO. 82679	DWG NO. DT 110	ISSUE Ø
SCALE			SHEET		OF		