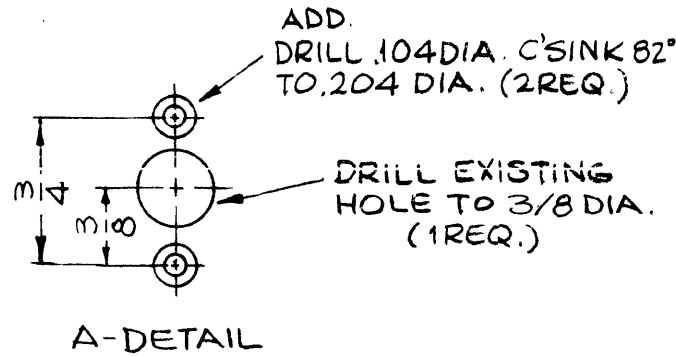
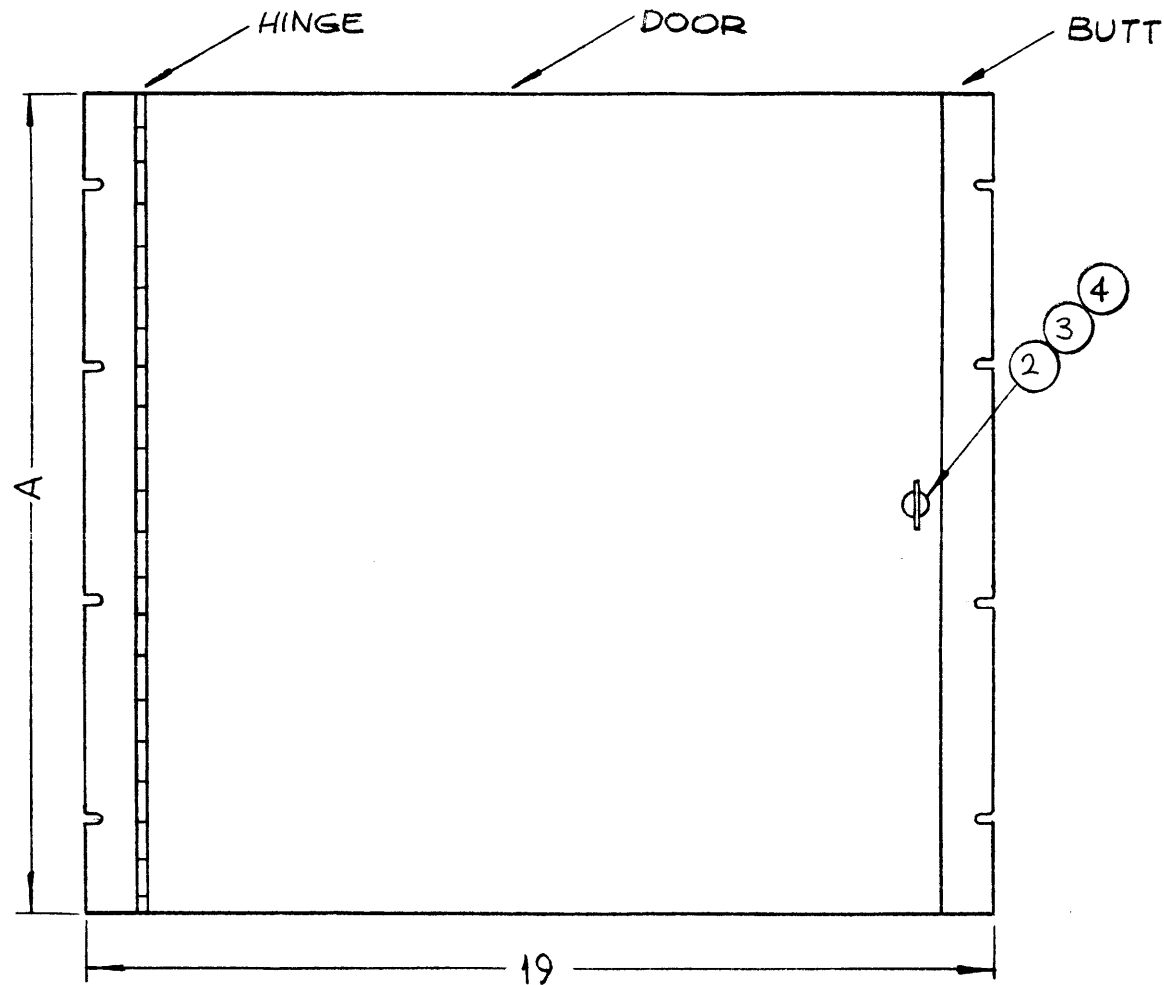


TMC NO.	DIA A	MODIFY TMC # ①
DR102-1	21	DR101-1
DR102-2	17 1/2	DR101-2
DR102-3	14	DR101-3
DR102-4	12 1/4	DR101-4
DR102-5	10 1/2	DR101-5
DR102-6	8 3/4	DR101-6
DR102-7	7	DR101-7
DR102-8	5 1/4	DR101-8
DR102-9	3 1/2	DR101-9



DR102

REVISIONS					
SYM	DESCRIPTION	DATE	E.M.N. NO.	DRAFT	CHKD APPD
X	EXPERIMENTAL RELEASE	11-18-64	X	SRG	
Ø	ORIGINAL RELEASE FOR PRODUCTION	1-26-65	Ø	SRG	



- NOTE:
- EXISTING LATCH TO BE REMOVED.
  - ENLARGE LATCH HOLE IN DOOR TO 1/4 DIAM. (1 REQ.)
  - MODIFY BUTT SECTION PER DETAIL "A"
  - FINISH: SPRAY BLUE GREY LACQUER OVER EXISTING FINISH. (S523)

REQ'D.	ITEM	PART NUMBER	DESCRIPTION	SYMBOL
2	7	NTH0348BN6	NUT, PLAIN, HEX	
2	6	LWE03MRN	LOCKWASHER EXTERNAL	
2	5	SCFP0348BN6	SCREW, MACHINE	
1	4	FS109-3	SNAP RING	
1	3	FS102-1	SPRING TYPES	
1	2	FS103-5	FASTENER, WING TYPE	
1	1	SEE CHART		

M. STURMER		LIST OF MATERIAL	
MATERIAL 1/8 THICK STEEL		THE TECHNICAL MATERIEL CORP. MAMARONECK, NEW YORK	
FINISH 'SEE NOTE 4		TITLE DOOR, CONSOLE	
UNLESS OTHERWISE SPECIFIED DIMENSIONS ARE IN INCHES AND INCLUDE CHEMICALLY APPLIED OR PLATED FINISHES		DRAWN SRG	DATE 11-18-64
		CHECKED [Signature]	DATE 1-22-65
		ELECT. DES. [Signature]	DATE 1-22-65
		MECH. DES.	DATE
		APPROVAL [Signature] DR102	
		SHEET	

1	COPA-2	A4017
Q'TY./UNIT	MODEL USED ON	ASS'Y. NO.
SCALE	CODE A	

NOTES

THE CONTENTS OF THIS DRAWING ARE THE EXCLUSIVE PROPERTY OF THE TECHNICAL MATERIEL CORP. ITS UNAUTHORIZED USE OR REPRODUCTION IN WHOLE OR IN PART IS STRICTLY FORBIDDEN.

DECIMALS .X ± .05 .XX ± .01 .XXX ± .005	TOLERANCES	FRACTIONS ± 1/64 ANGLES ± 0° 30'
--	------------	---