

5

4

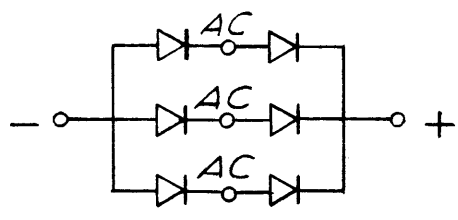
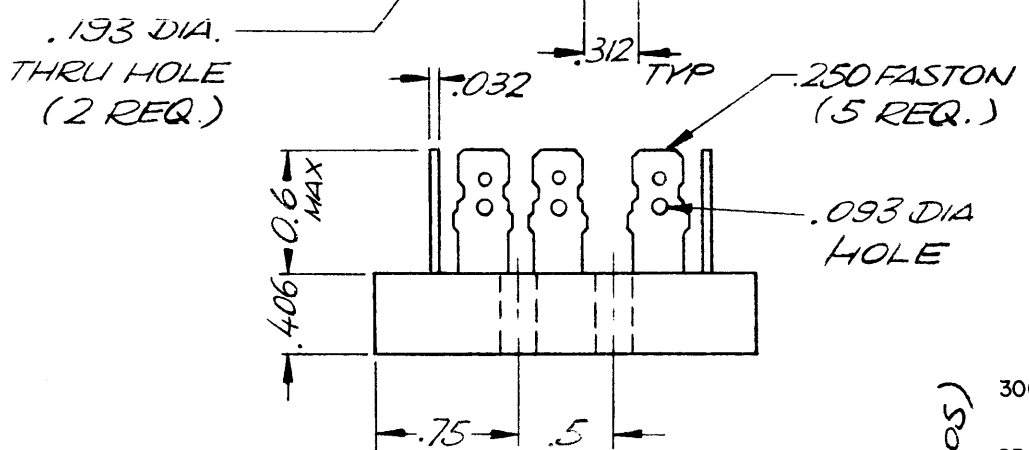
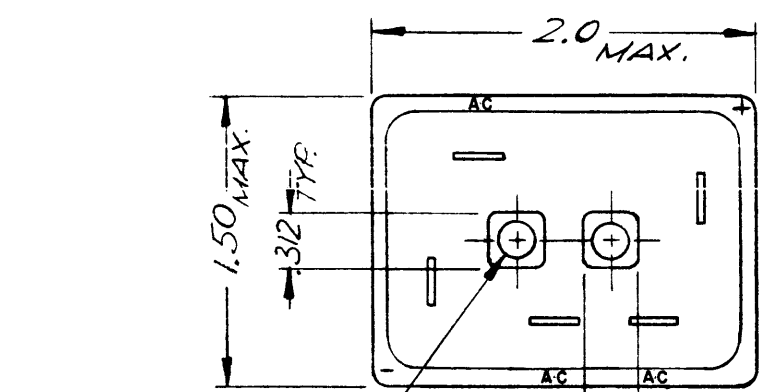
3

2

1

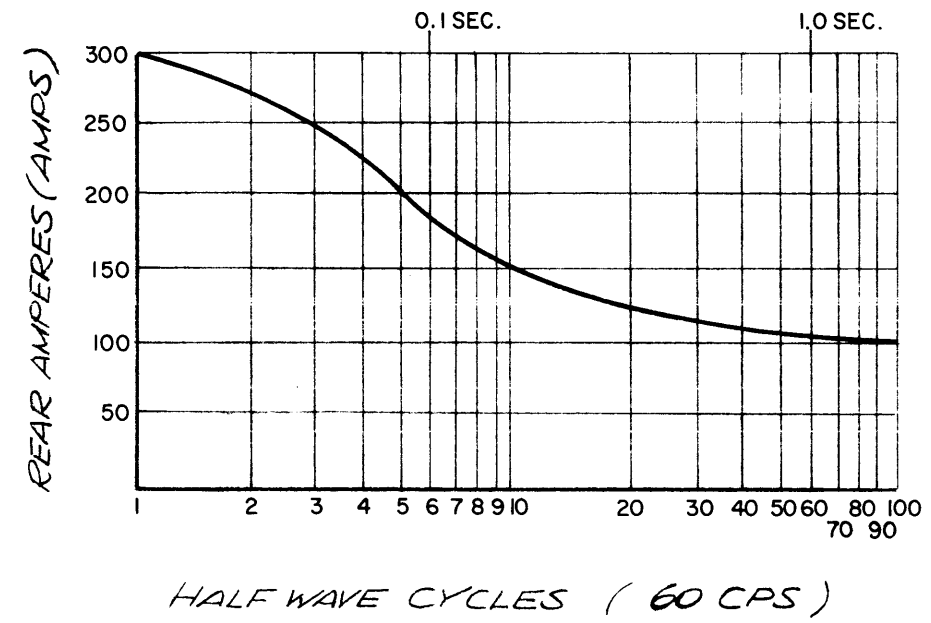
TMC P/N	MFG. P/N	PIV PER LEG
DD 146-1	PBT 05	50V
DD 146-2	PBT 10	100V
DD 146-3	PBT 20	200V
DD 146-4	PBT 40	400V
DD 146-5	PBT 60	600V
DD 146-6	PBT 80	800V
DD 146-7	PBT 100	1000V

REVISIONS						
ZONE	LTR	DESCRIPTION	DATE	E.M.N.NO	DRAFT	CHKD APPD
	X	EXP. RELEASE	1/20/70			GLND
	Ø	ORIGINAL RELEASE	1/26/70			CU
	A	POLARITY SYM. REVERS.	3/12/70	19785		GLND A.S. RTA
	B	POLARITY SYM REVERSED	6/11/71	20373		CU CU



SCHEMATIC

NON-REPETITIVE SURGE CURRENT RATINGS



SPECIFICATIONS

AVERAGE DC CURRENT OUTPUT CASE TEMPERATURE:

55°C	27.5 AMPS
100°C	20 AMPS
125°C	15 AMPS
150°C	7.5 AMPS

AMBIENT TEMPERATURE: (No heat sink)

25°C	8 AMPS
55°C	6 AMPS
100°C	4 AMPS

PEAK ONE-CYCLE SURGE(60HZ): 300 AMPS MAX

PEAK RECURRENT FORWARD CURRENT(Tc = 55 C): 75 AMPS MAX

MAXIMUM DC FORWARD VOLTAGE PER LEG @3 AMPS DC @25°C: 1 VOLT

MAXIMUM DC REVERSE CURRENT @RATED PIV: 10 uA @25°C, 100 uA @100 C

MATERIAL: METALLIC CASE FILLED WITH HIGH THERMAL CONDUCTIVITY EPOXY

1	PALA-10K	AX 5080
QTY / UNIT	MODEL USED ON	ASS'Y NO.
APPLICATION		
	CODE	5401-402

NOTICE TO PERSON RECEIVING THIS DRAWING
 THE TECHNICAL MATERIEL CORPORATION claims proprietary right in the material disclosed hereon. This drawing is issued in confidence for engineering information only and may not be reproduced or used to manufacture anything shown hereon without permission from THE TECHNICAL MATERIEL CORPORATION to the user. This drawing is loaned for mutual assistance and is subject to recall at any time.

UNLESS OTHERWISE SPECIFIED DIMENSIONS ARE IN INCHES AND INCLUDE CHEMICALLY APPLIED OR PLATED FINISHES

DECIMALS: .X ± .05, .XX ± .01, .XXX ± .005
 FRACTIONS: 1/64
 TOLS.: ANGLES: 0° .30'

MATERIAL
 FINISH

REQ'D	ITEM	PART NUMBER	DESCRIPTION	SYM.
LIST OF MATERIAL				
THE TECHNICAL MATERIEL CORP. MAMARONECK, NEW YORK				
RECTIFIER, SCOND DEV				
SIZE	CODE IDENT. NO.	DWG NO.	ISSUE	
B	82679	DD 146	B	
SCALE	#		SHEET	OF

5

4

3

2

1