

5

4

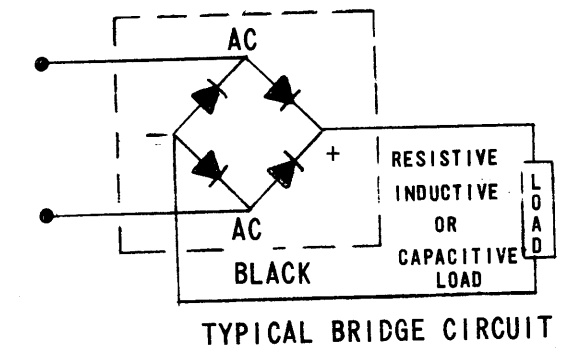
3

2

1

REVISIONS						
ZONE	LTR	DESCRIPTION	DATE	E.M.N.NO	DRAFT	CHKD APPD
	X	EXPERIMENTAL RELEASE			C.V.	JAO
	Z	OPIG RELEASE FOR PROD.	2-19-68		P.G.	JAO

TMC P/N	TYPE	PIV PER LEG VOLTS	SINE WAVE RMS INPUT VOLTAGE MAX VOLTS	AVERAGE DC OUTPUT AMPS TC=(CASE TEMP.)				AVERAGE DC OUTPUT AMPS TA=AMBIENT TEMP (NO HEAT SINK)			PEAK 1 CYCLE FORWARD SURGE AMPS	PEAK RECURRENT FORWARD AMPS	PEAK DC OUTPUT (1 SEC MAX) AMPS	VF MAX PER LEG @ 3ADC		REVERSE CURRENT (IR MAX PER LEG @ PIV)	
				55°C AMPS	100°C AMPS	125°C AMPS	150°C AMPS	25°C AMPS	55°C AMPS	100°C AMPS				55°C VOLTS	25°C UA	25°C UA	100°C UA
				25	18.5	12.5	6.5	6.0	5.0	3.0				300	75	60	1.0
DD142-1	SCBA1	100	70														



PURCHASING NOTE: VENDOR MUST INCLUDE THE FOLLOWING INFORMATION WHEN SHIPPING THIS ITEM TO TMC.

1. AN OUTLINE DRAWING OR ILLUSTRATION FROM CATALOG SHOWING ALL PERTINENT DIMENSIONS AND TOLERANCES.
2. ELECTRICAL AND/OR MECHANICAL SPECIFICATIONS AS SHOWN IN THEIR CATALOGS.

LPA-2		
QTY / UNIT	MODEL USED ON	ASS'Y NO.
APPLICATION		
CODE	S401-459	

NOTICE TO PERSONS RECEIVING THIS DRAWING
 THE TECHNICAL MATERIEL CORPORATION claims proprietary right in the material disclosed hereon. This drawing is issued in confidence for engineering information only and may not be reproduced or used to manufacture anything shown hereon without permission from THE TECHNICAL MATERIEL CORPORATION to the user. This drawing is loaned for mutual assistance and is subject to recall at any time.

UNLESS OTHERWISE SPECIFIED DIMENSIONS ARE IN INCHES AND INCLUDE CHEMICALLY APPLIED OR PLATED FINISHES	
DECIMALS	FRACTIONS
.X ± .05	1/64
.XX ± .01	TOLS. ANGLES
.XXX ± .005	0° -30'
MATERIAL	
FINISH	

REQ'D	ITEM	PART NUMBER	DESCRIPTION	SY
F. BUDETTI LIST OF MATERIAL				
THE TECHNICAL MATERIEL CORP. MAMARONECK, NEW YORK				
RECTIFIER, FULL WAVE BRIDGE				
SIZE	CODE IDENT. NO.	DWG NO.		
B	82679	DD 142		
SCALE				SHEET
				1

5

4

3

2

1