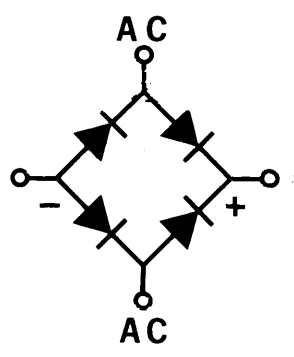
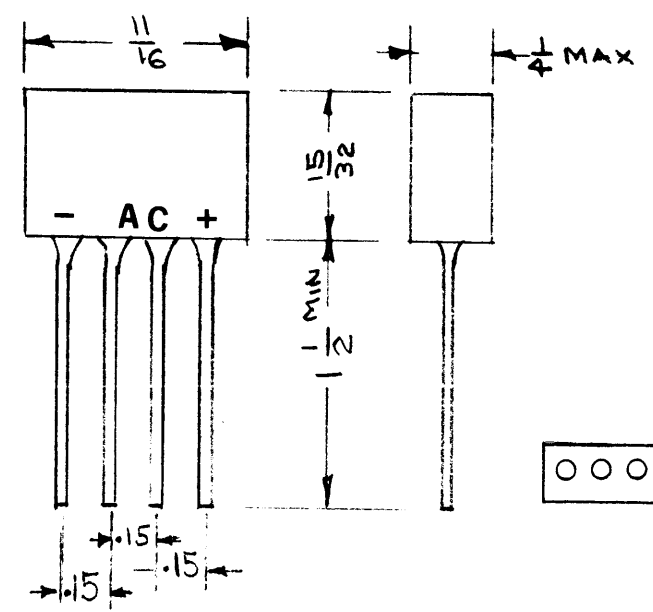


# STANDARD DRAWING

CHART I VOLTAGE	
PEAK REVERSE VOLTS	RMS INPUT VOLTS
200	140
600	420
100	70
1000	700

CHART II OUTPUT CURRENT				
DC OUTPUT CURRENT MAX @ 25°C AMPS.	MFG. A TYPE	PEAK ONE-CYCLE SURGE CURRENT AMPS.	PEAK RECURRENT FORWARD CURRENT @ 25°C. AMPS	FORWARD VOLTAGE DROP PER JUNCTION @ 25°C AND 1/2 RATED CURRENT VOLTS
1.5	FWL (FW)	35	5	0.87
3.0	FWLB (FWB)	35	8	1.10
4.0	FWLC (FWC)	50	10	0.9



### NOTES

Q'TY./UNIT	MODEL USED ON	ASS'Y. NO.
SCALE	CODE A S401-107	
	B S401-402	

THE CONTENTS OF THIS DRAWING ARE THE EXCLUSIVE PROPERTY OF THE TECHNICAL MATERIEL CORP. ITS UNAUTHORIZED USE OR REPRODUCTION IN WHOLE OR IN PART IS STRICTLY FORBIDDEN.

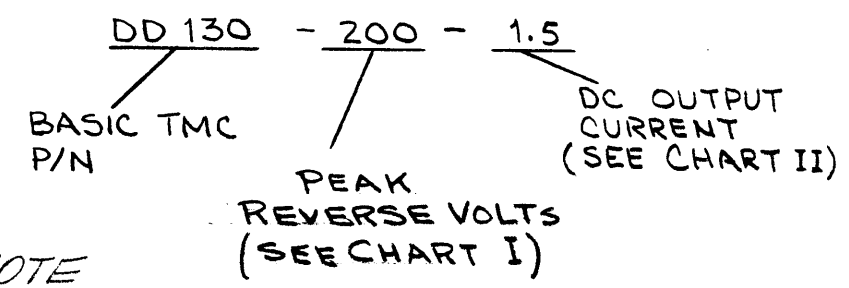
DD130

REVISIONS					
SYM	DESCRIPTION	DATE	E.M.N. NO.	DRAFT	CHKD
Ø	ORIGINAL RELEASE FOR PRODUCTION	1-18-66	M	Jc	Jc
A	COMPLETELY REVISED & REDRAWN	11-17-66	17270	RME	Jc
B	ADDED S401-402	7/7/69	#	GE	Jc
C	ADD NOTE DD-130	2/17/71	20234	GE	Jc

### SPECIFICATIONS

OPERATING TEMP: -55°C TO 100°C.  
 DERATING: RATED CURRENT AT 25°C DERATING TO ZERO AT 100°C.  
 CASE: MOULDED PLASTIC  
 MARKING: LEADS TO BE MARKED AC, NEG. AND POS. SYMBOL, AND TMC PART NO.  
 LEADS: .032 - 1.5 AMP.  
 .051 - 3 & 4 AMP.

TMC P/N SHALL BE IN THE FOLLOWING FORM:



NOTE  
 DD-130-200-4.0 SUPERCEDED BY DD 144-6

REQ'D.	ITEM	PART NUMBER	DESCRIPTION	SYMBOL
LIST OF MATERIAL				
MATERIAL		THE TECHNICAL MATERIEL CORP. MAMARONECK, NEW YORK		
FINISH		TITLE Semi Conductor, Rectifier, Bridge		
UNLESS OTHERWISE SPECIFIED DIMENSIONS ARE IN INCHES AND INCLUDE CHEMICALLY APPLIED OR PLATED FINISHES		DRAWN: <i>[Signature]</i> CHECKED: <i>[Signature]</i> ELECT. DES: <i>[Signature]</i> MECH. DES:	DATE: 1-17-66 DATE: 1-17-66 DATE: 1-18-66 DATE:	FINAL APPROVAL: <i>[Signature]</i> DATE: 1/18/66 DD130 SHEET: C REV. LTR.
DECIMALS	TOLERANCES	FRACTIONS		
.X ± .05		± 1/64		
.XX ± .01		ANGLES ± 0° 30'		
.XXX ± .005				