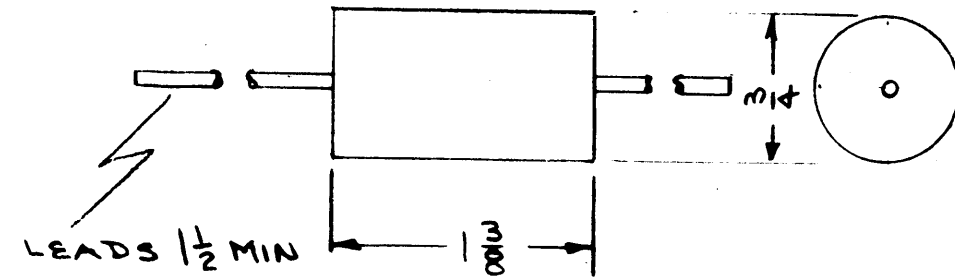


STANDARD DRAWING

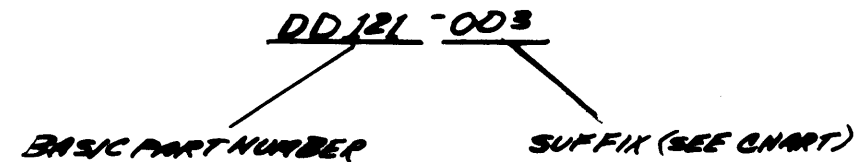
SOLENOID SIZE	COIL AWG.	DUTY CYCLE									
		Continuous		1/3/4		1/2		1/4		1/10	
		Volts	TMC SUFFIX	Volts	TMC SUFFIX	Volts	TMC SUFFIX	Volts	TMC SUFFIX	Volts	TMC SUFFIX
1	33	—	—	15	002	18	002	28	002	41	002
1	36	—	—	32	002	39	002	56	004	89	004
1	38	—	—	48	002	57	004	80	004	126	004
2	30	9	002	10	002	13	002	18	002	28	002
2	32	14	002	16	002	20	002	28	002	45	002
2	35	28	002	32	002	39	002	56	004	89	004
2	37	45	002	51	002	63	004	89	004	142	001
3	28	8.4	002	9.7	002	12	002	17	002	26	002
3	29	10	002	12	002	15	002	21	003	33	003
3	31	17	002	19	002	24	002	33	002	53	002
3	34	33	002	38	002	47	002	67	004	105	004
3	36	53	002	61	004	75	004	106	004	167	001
4	28	13	002	15	002	18	002	26	002	42	002
4	31	27	002	31	002	38	002	54	002	85	004
4	33	43	002	50	002	60	004	86	004	138	001
5	25	9.5	002	11	002	13	002	19	002	30	003
5	26	12	002	14	002	17	002	24	002	38	003
5	27	15	002	17	002	21	002	30	002	48	003
5	30	30	002	34	002	43	002	60	004	95	004
5	31	38	002	43	002	54	002	76	004	120	003
5	32	48	002	56	004	67	004	95	004	150	001
6	24	13	002	15	002	18	002	26	003	41	003
6	27	26	002	30	002	37	002	52	002	83	004
6	29	41	002	48	002	59	004	83	004	131	001
7	22	13	002	15	002	18	003	26	003	41	003
7	25	26	002	30	002	37	003	52	003	83	004
7	27	41	002	47	002	59	004	83	004	132	001
8	21	15	002	17	003	22	003	30	003	47	003
8	24	30	002	35	002	44	002	61	004	83	004
8	26	49	002	56	004	70	004	97	004	152	001

A
DD121

REVISIONS						
SYM	DESCRIPTION	DATE	E.M.N. NO.	DRAFT	CHKD	APPD
0	ORIGINAL RELEASE FOR PRODUCTION	5/29/65				
A	COMPLETELY REVISED	7/4/65				

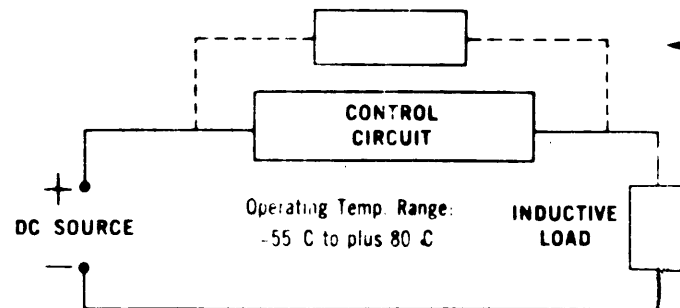


TMC PART NUMBER SHALL BE IN THE FOLLOWING FORM:



When selecting suppressors for coils other than those shown in the chart, note that the DC source voltage should not exceed the maximum voltage rating of the suppressor. In an unfiltered rectified circuit, the peak value may be estimated by multiplying the average DC voltage by 1.5. For example, a full wave silicon bridge rectifier has an average output of 100 volts DC. The value of the suppressor, therefore, should be 150 volts or more.

Suffix	001	002	003	004
Max. Voltage Rating (DC)	170	55 (below 2 amps)	55 (above 2 amps)	110



Schematic for suppressors DD121-001 thru 004 (connect in parallel with control circuit). Suppressor is non-polarized.

QTY./UNIT		MODEL USED ON		ASS'Y. NO.
SCALE		CODE	5401-281 (12103-)	

THE CONTENTS OF THIS DRAWING ARE THE EXCLUSIVE PROPERTY OF THE TECHNICAL MATERIEL CORP. ITS UNAUTHORIZED USE OR REPRODUCTION IN WHOLE OR IN PART IS STRICTLY FORBIDDEN.

REQ D	ITEM	PART NUMBER	DESCRIPTION	SYMBOL
BUDETTI LIST OF MATERIAL				
MATERIAL			THE TECHNICAL MATERIEL CORP. MAMARONECK, NEW YORK	
FINISH			SUPPRESSOR	
UNLESS OTHERWISE SPECIFIED DIMENSIONS ARE IN INCHES AND INCLUDE CHEMICALLY APPLIED OR PLATED FINISHES			DRAWN <i>Wd</i> CHECKED <i>Mc</i> ELECT. DES. MECH. DES.	DATE <i>5-25/65</i> DATE <i>5/25/65</i> DATE DATE
DECIMALS .X ± .06 .XX ± .01 .XXX ± .005			FINAL APPROVAL <i>Wd</i> DATE DATE DATE DATE	
TOLERANCES ± 1/64 ANGLES ± 0° 30'			DD121 A	
			SHEET	

NOTES