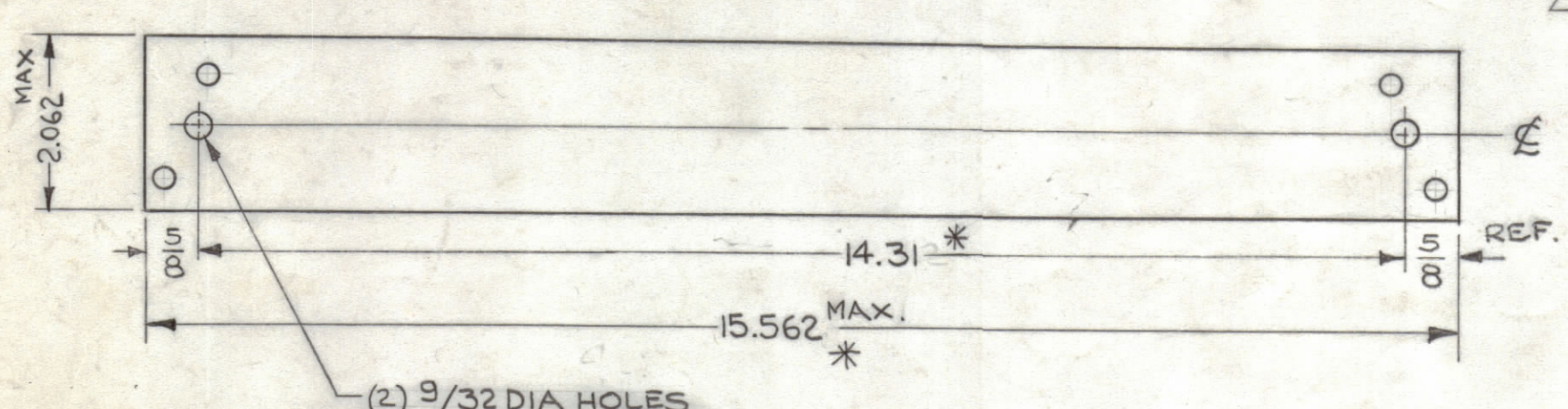
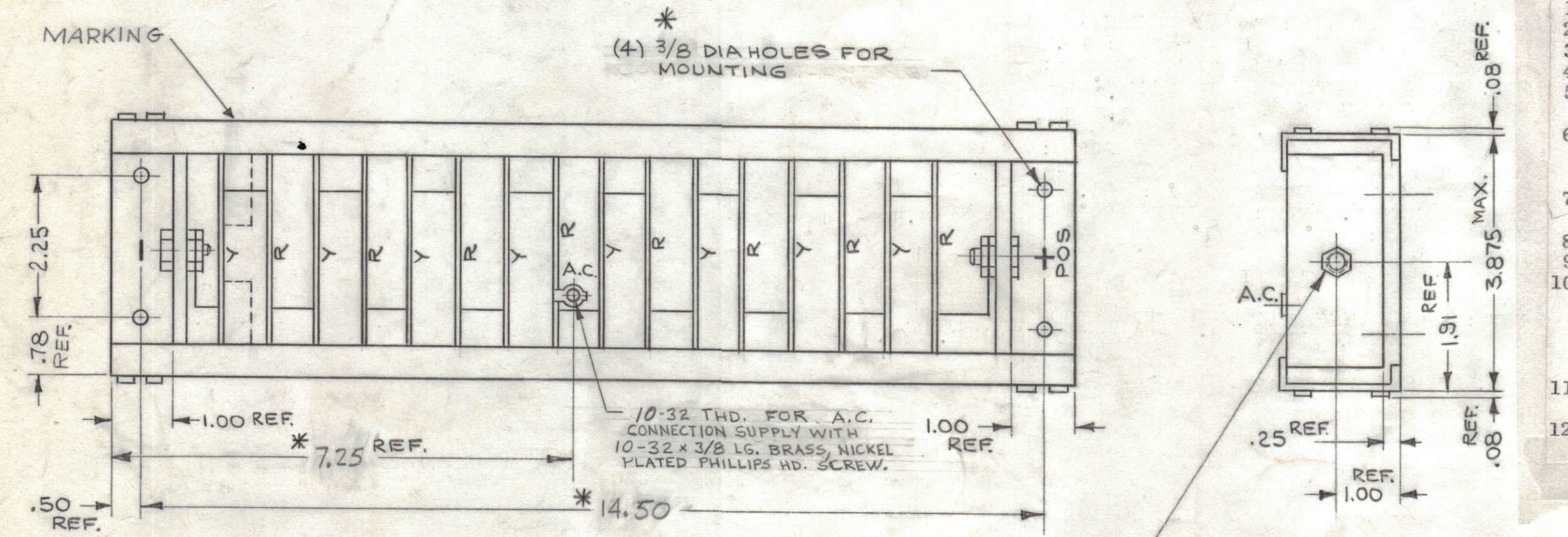


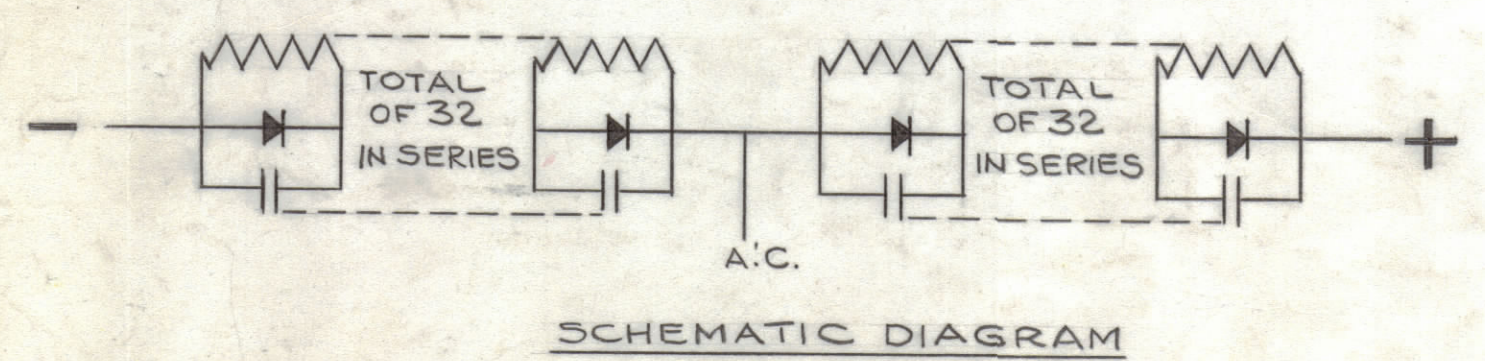
TMC PART No.	TMC CONTROL No.	MFG. CODE	MFG. P/N
DD116	DD116XX329	S401-239	SD15A09MOB17

REVISIONS						
ZONE	SYM	DESCRIPTION	DATE	E.M.N. NO.	DRAFT	CHKD
X		EXPERIMENTAL RELEASE	1-25-65	X	WFB	
Ø		ORIGINAL RELEASE FOR PRODUCTION	2-26-65		WFB	
A		"(4) 3/8 DIA. WAS "(4) .27 DIA. ON THD. CALLOUTS: "SUPPLY WITH 10-32 X 3/8 LG. ... " ADD. (2 PL.)	4-14-65	13852	97	WFB
B		CURRENT & VOLTAGE VALUES REVISED. NOTE #12, TMC P/N CHG. ADDED. N.W. WAS 6-32, DIM. 14.31 WAS 14.312. N.F.B. PT. NO. DELETED	1-27-65	15017	H.V.	WFB
C		NOTE & NEW DIMS ADDED	8-27-74	21174	CP	WFB
D		DD116 MFG CODE WAS S401-116-2 MFG. NO. 3200018610	5-24-76	21389	SDL	WFB
E		NOTE "NO LONGER AVAIL NOTE Added	9-14-79	21714	C.D.L.	WFB
		SHEET 2 Added.	9-18-79	21714	MAC	WFB

* NOTE:
DUE TO UNAVAILABILITY OF ORIGINAL PARTS, SLIGHT DIMENSIONAL CHANGES ON REPLACEMENT STACK REQ'S RELOCATION OF ONE MOUNTING HOLE ON HVRC-1 ASSY. (NEW MOUNTING DIM. 15")



OLD DIM.	NEW DIM.
* 14.31	15"
* 15.562	16.250
* 3/8 DIA	5/16 X 9/16 SLOT
* 7.25	8.00
* 14.50	15.25



- SPECIFICATIONS
- TYPE: DOUBLER
 - NO. OF CIRCUIT LEGS: TWO WITH EIGHT MODULES PER LEG (4 DIODES PER MODULE)
 - MAX. PEAK REVERSE WORKING VOLTAGE: EACH LEG 20KV
 - MAX. PEAK REVERSE CURRENT AT RATED PRV: 20MA
 - MAX. AVERAGE RECTIFIED CURRENT @50°C 4.8 AMPS @ 1000LFM FORCED AIR
1.2 AMPS @ NATURAL CONVECTION
 - PEAK FORWARD SURGE OVERLOAD CURRENT AT RATED LOAD, 1 CYCLE @ 60CPS: 100 AMP
6 CYCLES @ 60CPS: 65 AMP
 - MAX. FULL LOAD FORWARD VOLTAGE DROP, FULL CYCLE AVERAGE @ 50°C: 34.5 VOLTS EACH LEG @ 4.8 AMPS.
 - OPERATING TEMP. RANGE: -55 TO +85°C
 - STORAGE TEMP: -55°C TO +71°C
 - MATERIAL: EXTERIOR-POLYESTER FIBERGLASS
- NOTE: FOR REPLACEMENT OF MODULE BOARDS ADD A "Y" FOR YELLOW OR "R" FOR RED TO TMC P/N OR MFG. P/N.
- MFG. MODULE PART NUMBER 366 B-E
 - MARKING: TMC P/N AND TMC CONTROL NO. TO BE STAMPED PER. CHART 1/8 BLACK GOTHIC WHERE SHOWN.

DD116 NO LONGER AVAILABLE REPLACED BY DD 116-2 (AX799) (SEE SHEET 2)

REQ'D.	ITEM	PART NUMBER	DESCRIPTION	SYMBOL
LIST OF MATERIAL				
MATERIAL		THE TECHNICAL MATERIEL CORP. MAMARONECK, NEW YORK		
FINISH		TITLE RECTIFIER, SEMICONDUCTOR DEVICE		
UNLESS OTHERWISE SPECIFIED DIMENSIONS ARE IN INCHES AND INCLUDE CHEMICALLY APPLIED OR PLATED FINISHES		DRAWN WFB	DATE 1-25-65	FINAL APPROVAL
DECIMALS .X ± .05 .XX ± .01 .XXX ± .005		CHECKED WFB	DATE 7/24/65	DATE
FRACTIONS ± 1/64 ANGLES ± 0° 30'		ELECT. DES. WFB	DATE 7/24/65	DATE
TOLERANCES		MECH. DES. WFB	DATE 7/24/65	DATE
THE CONTENTS OF THIS DRAWING ARE THE EXCLUSIVE PROPERTY OF THE TECHNICAL MATERIEL CORP. ITS UNAUTHORIZED USE OR REPRODUCTION IN WHOLE OR IN PART IS STRICTLY FORBIDDEN.		SHEET 1 OF 2		

STANDARD DRAWING

NOTES

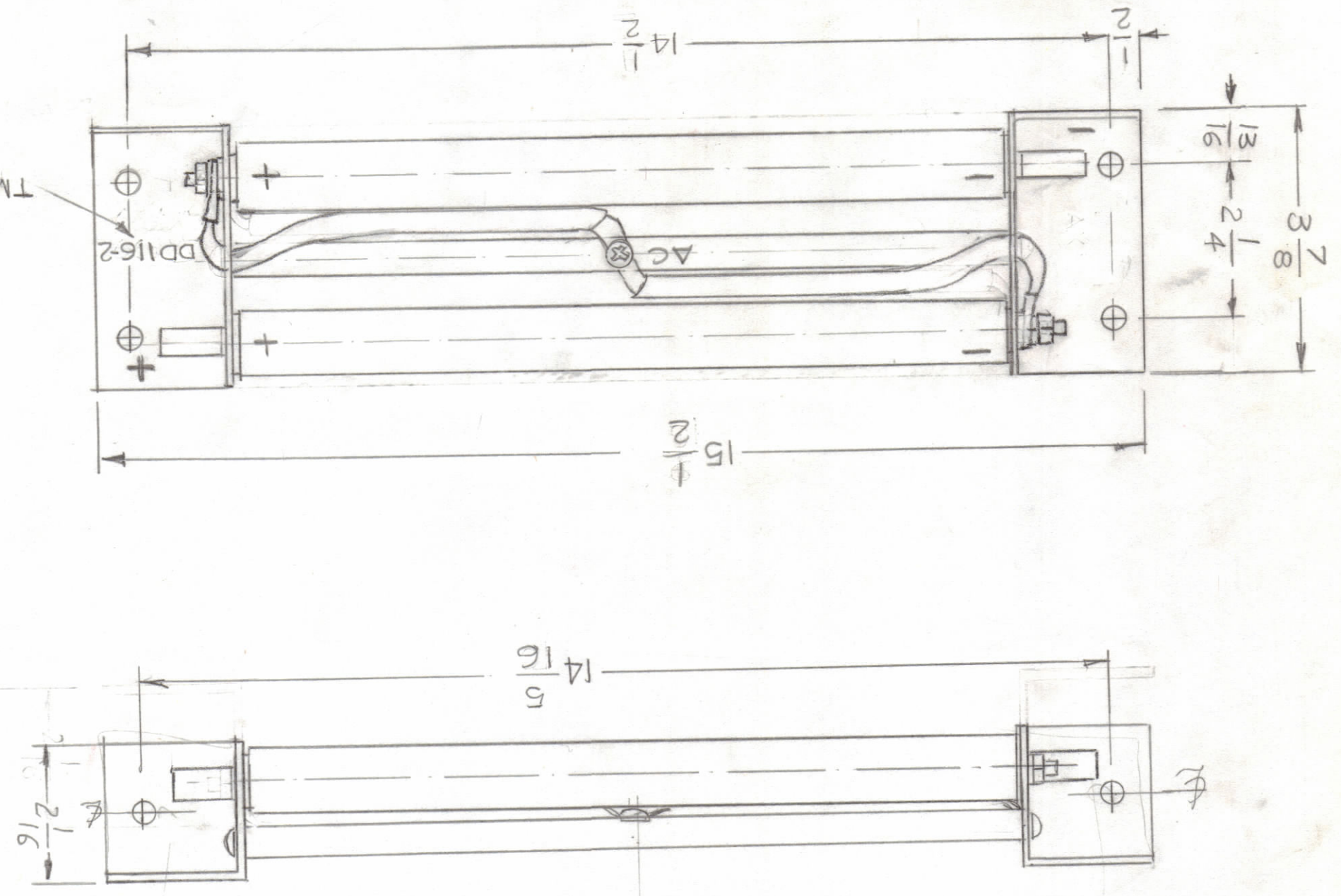
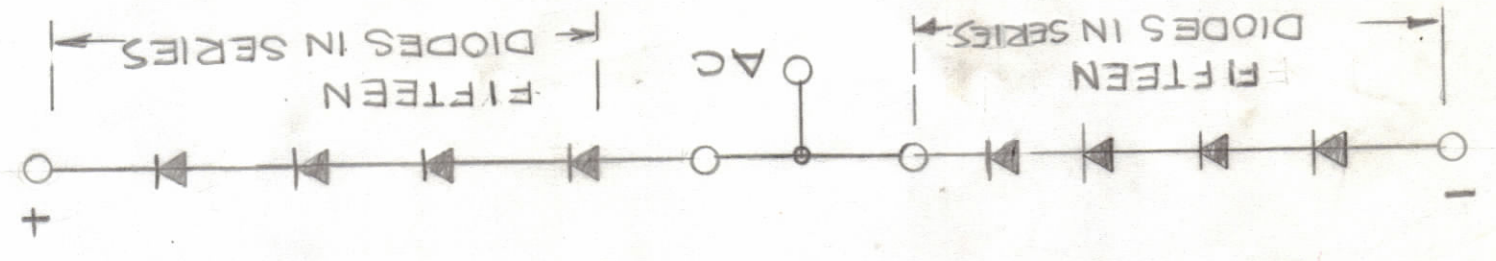
HVRC-1	
Q'TY./UNIT	MODEL USED ON
SCALE	CODE
	ASS'Y. NO.
	S401-329

NOTICE TO PERSONS RECEIVING THIS DRAWING
 THE TECHNICAL MATERIEL CORPORATION claims proprietary right in the materiel disclosed herein. This drawing is issued in confidence for engineering information only and may not be reproduced or used to manufacture anything shown hereon without permission from THE TECHNICAL MATERIEL CORPORATION.

to the user. This drawing is loaned for mutual assistance and is subject to recall at any time.

KIT450		QTY / UNIT	3
AVRC-1		MODEL USED ON	3
AX799		ASSY NO.	3

SCHEMATIC DIAGRAM



UNLESS OTHERWISE SPECIFIED DIMENSIONS ARE IN INCHES AND INCLUDE CHEMICALLY APPLIED OR PLATED FINISHES	
DECIMALS	± 0.05
FRACTIONS	± 1/64
ANGLES	± 0.30°
XXX ± .005	
XX ± .01	
X ± .05	

QTY REQ.	ITEM	PART NO.	DESCRIPTION	SYMBOL
----------	------	----------	-------------	--------

LIST OF MATERIAL

DATE	MECH. DES.	DATE	ELECT. DES.	DATE	CHECKED	DATE	DRAWN	DATE	
							G.D.L.	9-14-79	
FINAL APPROVAL		MAMARONECK, NEW YORK		RECTIFIER, SEMICONDUCTOR		DEVICE		SCALE 1/2	
C 82679		CODE IDENT. NO.		DD116-2		DWG. NO.		E	
SIZE		ISSUE		SHEET 2 OF 2		FINISH		1	

SPECIFICATIONS

- 1- TYPE DOUBLER (AVALANCHE DIODES)
- 2- NO. OF CIRCUIT LEGS TWO WITH 15 DIODES PER LEG
- 3- MAX. PEAK REVERSE WORKING VOLTAGE EACH LEG 15KV
- 4- MAX PEAK REVERSE CURRENT AT RATED PRV (1A50°C) 2MA
- 5- MAX AVERAGE RECTIFIED @ 50°C 2.8A NATURAL CONVECTION
- 6- PEAK FORWARD SURGE @ 60 CPS 400 AMPS
- 7- MAX FULL LOAD FORWARD VOLTAGE DROP FULL CYCLE AVERAGE @ IDC = 4A TA=25°C 18VOLTS
- 8- OPERATING TEMP RANGE -55°C TO +125°C
- 9- STORAGE TEMP -55°C TO +71°C
- 10- MODULE PART NO. AX 799
- 11- MARKING: TMC P/NO. 1/8 HIGH GOTHIC AS SHOWN.

(DD116-2 Replaces DD116)

NOTE: PARTS AND ASSEMBLY INFORMATION TO BE LOCATED ON DRAWING AX799

REVISIONS	DATE	E.M.N.O	DRAFT	CHKD	APPD
See Sheet 2	9-6-79	M.A.D.			