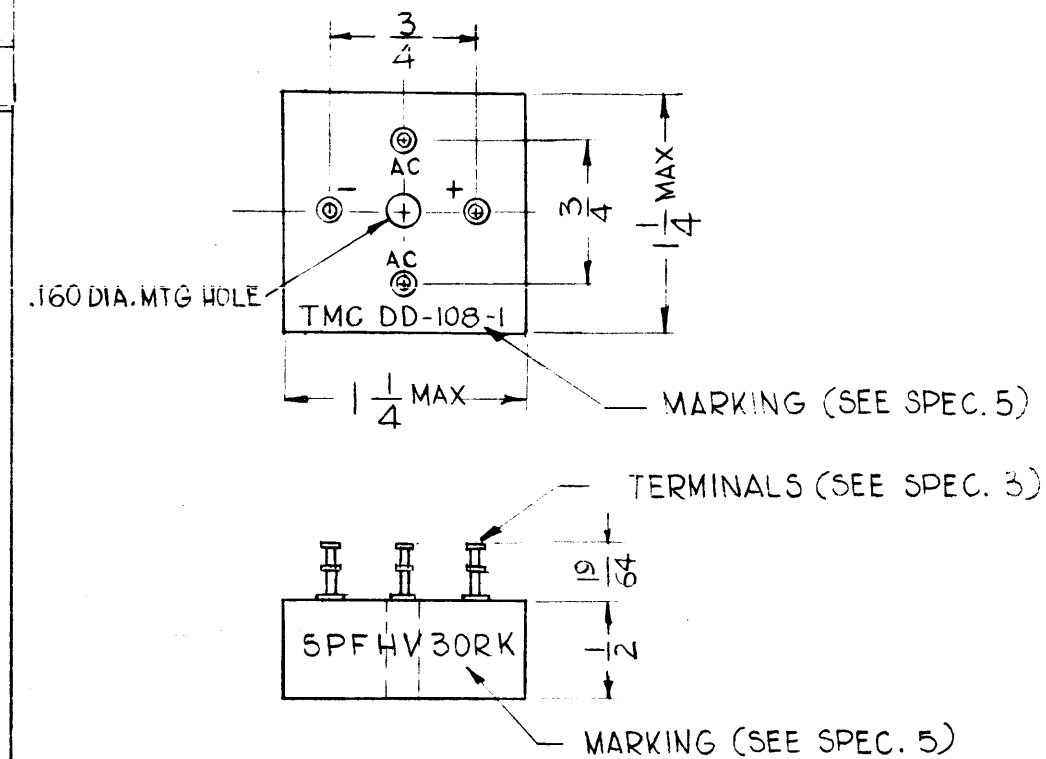


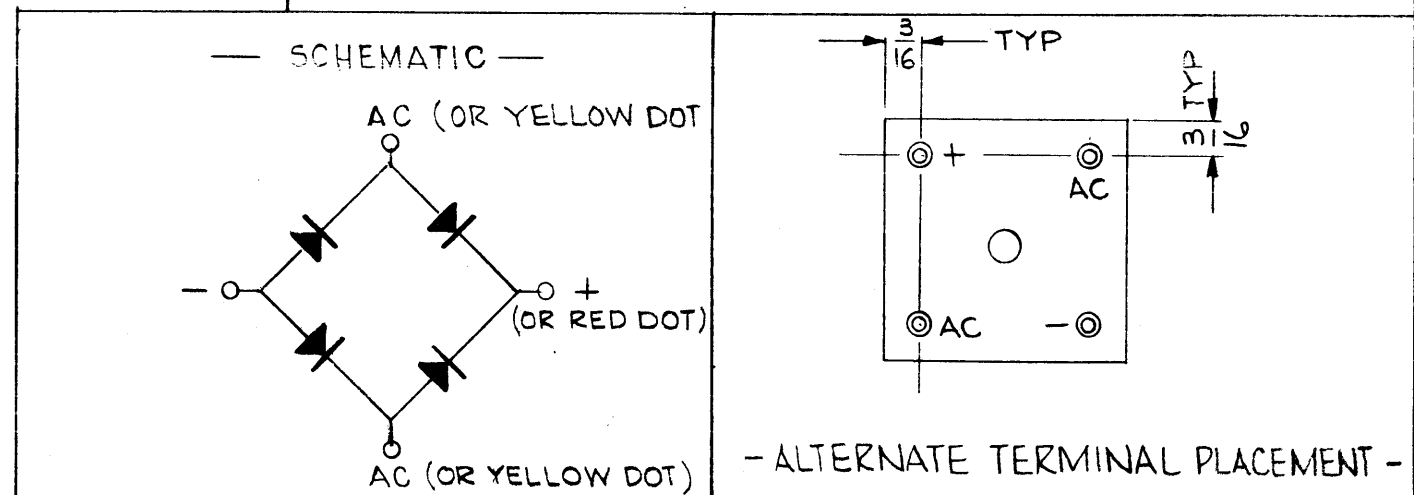
TMC PART NO.	PEAK REV. VOLT PER LEG	RMS VOLT PER LEG (MAX) (INPUT)	DC OUTPUT VOLT (MAX)	ELECTRICAL SPECS (AT 25 C)				
				DC OUTPUT CURRENT (MAX)	MAX. FWD VOLT DROP PER LEG	RECURRENT PEAK CURRENT	OPER. TEMP. RANGE (C)	MAX REVERSE CURRENT AT PRV
DD-108-1	3000	2100	1890	500 MA	6V	3A	-55 to +125	10 UA

REVISIONS						
SYM	DESCRIPTION	DATE	E.M.N. NO.	DRAFT	CHKD	APPD
A	DWG UPDATED	7/11/63	10531			



SPECIFICATIONS

- INDIVIDUAL SEMICONDUCTOR DATA
 - QUAN: 4
 - MATERIAL: SILICON
- CASE DATA
 - MATERIAL: EPOXY (SILICA FILLED)
 - FINISH: NONE
 - COLOR: BLACK
- TERMINAL DATA
 - QUAN: 4
 - TYPE: SOLDER STUD (CAMBION 1011 OR EQUIV)
 - MATERIAL: BRASS
 - FINISH: SILVER PLATE & WATER DIP LACQUER
- CONSTRUCTION
 - HERMETICALLY SEALED
- MARKING
 - ALL LETTERING TO BE 3/32 HIGH WHITE GOTHIC AS PER TMC SPEC S727
 - INPUT TERMINALS SHALL BE MARKED "AC" OR SIGNIFIED BY YELLOW DOTS.
 - OUTPUT TERMINALS SHALL BE MARKED "-" & "+" OR RED DOT INSTEAD OF "+".
 - MFRS. NO. SHALL BE MARKED ON SIDE OF UNIT (PER CHART)
 - TMC INITIALS & PART NO. (PER CHART) SHALL BE MARKED ON TERMINAL END AS SHOWN.
- ELECTRICAL SPECS
 - SEE CHART
 - SEE DETAIL
 - CIRCUIT: SINGLE PHASE, FULL WAVE BRIDGE



REQ'D.	ITEM	PART NUMBER	DESCRIPTION	SYMBOL
LIST OF MATERIAL				
KOHN			THE TECHNICAL MATERIEL CORP. MAMARONECK, NEW YORK	
MATERIAL SEE SPECS.			TITLE RECTIFIER, SEMICONDUCTOR DEVICE, FULL WAVE	
FINISH SEE SPECS.			DRAWN G.D.L. DATE 7-30-63	
UNLESS OTHERWISE SPECIFIED DIMENSIONS ARE IN INCHES AND INCLUDE CHEMICALLY APPLIED OR PLATED FINISHES			CHECKED <i>[Signature]</i> DATE 8-8-63	
			ELECT. DES. RON KOHN DATE 8-8-63	
DECIMALS .X ± .05 .XX ± .01 .XXX ± .005			MECH. DES. DATE	
			FRACTIONS ± 1/64 ANGLES ± 0° 30'	
THE CONTENTS OF THIS DRAWING ARE THE EXCLUSIVE PROPERTY OF THE TECHNICAL MATERIEL CORP. ITS UNAUTHORIZED USE OR REPRODUCTION IN WHOLE OR IN PART IS STRICTLY FORBIDDEN.			FINAL APPROVAL <i>[Signature]</i> DATE	
			DD-108 A	
NOTES			SHEET	
			REV. LTR.	

Q'TY./UNIT	MODEL USED ON	ASS'Y. NO.
1	TTR-10	AX-413
SCALE 1:1	CODE	S401-255 (DR30522B) S401-178 (SPFHY-30RK)