

CY-102 A		USED ON	
REQ PER UNIT	MODEL	PROJECT NO.	ASSY. NO.
			DATE

TMC P/N	MFR P/N	DRIVE SHAFT LOCATION	RANGE	DRIVE
CY102	A114235	1	0-99999	1 COUNT, 1 REVOL
CY102-2	A114135	1	0-9999.9	10 COUNTS, 1 REVOL
CY102-3	A114125	2	0-9999.9	10 COUNTS, 1 REVOL

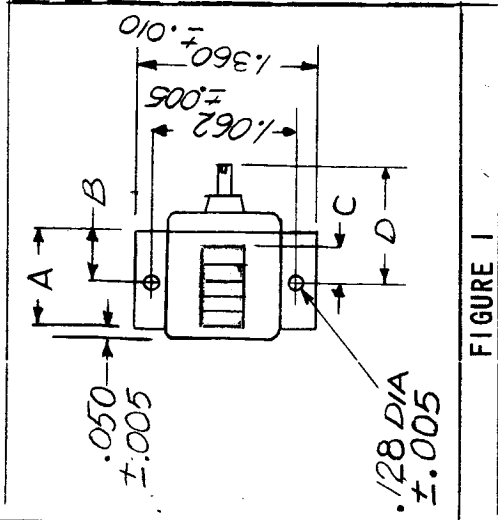


FIGURE 1

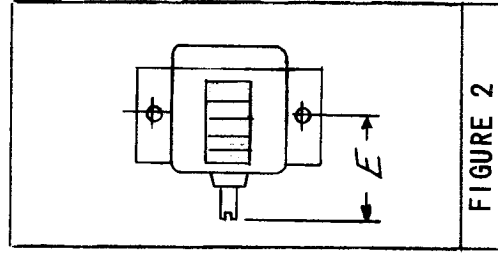


FIGURE 2

SYMBOL	A	B	C	D	E
DIA	.750 ±.005	.375 ±.005	.259 ±.005	.881 ±.002	.770 ±.020

REQ. ITEM	PART NO.	DESCRIPTION	SYMBOL
		THE TECHNICAL MATERIEL CORP. MAMARONECK, NEW YORK	
		COUNTER	
		STOCK SIZE	
		MATERIAL	
		WEIGHT PER PC.	
		TYPE & TEMPER	
		HEAT TREAT. SPEC.	
		FINISH & SPEC. NO.	

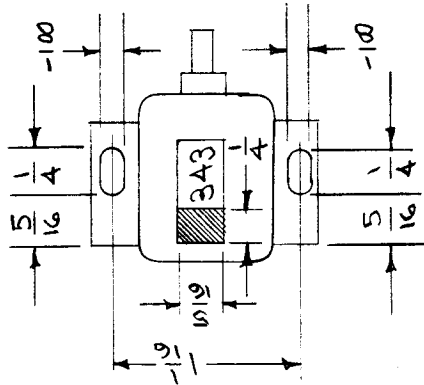
ISSUE ITEM	CHANGED FROM	DATE	CN. NO.	DRAFTS CHECKER	ENG. APP.
A	REV & UPDATED	2/9/69	19256	GE	FB
TOLERANCES					
SCALE S 401-22					
DRILL, PUNCH, COMMERCIAL STOCK SIZES AND MANUFACTURERS TOLERANCES ARE NOT INCLUDED.					
ALL OTHERS	DEC. DIM. ±				
	FRAC. DIM. ±				
	ANGULAR DIM. ±				

DRAWN	A. J. J.	MECH. DES. APP.	WDC
CHECKED	A. J. J.	FINAL APPROVAL	WDC
			CY-102 A

IF IT IS FOUND DESIRABLE TO CHANGE ANY TOLERANCE OR OTHER DETAIL SPECIFIED ON THIS DRAWING NOTIFY THE PURCHASER PROMPTLY.

MAXIMUM ALLOWABLE TOLERANCES HAVE BEEN DETERMINED AND DEVIATIONS WILL BE CAUSE FOR REJECTION. REMOVE ALL BURRS AND SHARP EDGES

NOTE:  
 PAINT SHADED AREA WITH ALUMINUM PAINT.  
 MODIFY HOLES AS SHOWN



USED AS ALTERNATE FOR PO-100

CY-103

REQ. PER UNIT	MODEL	PROJECT NO.	ASSY. NO.	DATE
1	Y0X			6-11-54

REF: CY-102

REQ. ITEM	PART NO.	DESCRIPTION	SYMBOL
		THE TECHNICAL MATERIEL CORP. MAMARONECK, NEW YORK	
STOCK SIZE		COUNTER MODIFICATION	
MATERIAL	WEIGHT PER PC.		
TYPE & TEMPER			
HEAT TREAT. SPEC.			
FINISH & SPEC. NO.			

WAB  
 DRAWN 9/11/54  
 CHECKED  
 ELEC. DES. APP. WSPC  
 MECH. DES. APP. WAD

OF CY-102

FINAL APPROVAL  
 CY-103

ISSUE ITEM	CHANGED FROM	DATE	CN. NO.	DRAFTS CHECKER	ENG. APP.
TOLERANCES					
ALL DEC. DIM. ±					
OTHERS FRAC. DIM. ±					
ANGULAR DIM. ±					

DRILL, PUNCH, COMMERCIAL STOCK SIZES AND MANUFACTURERS TOLERANCES ARE NOT INCLUDED.



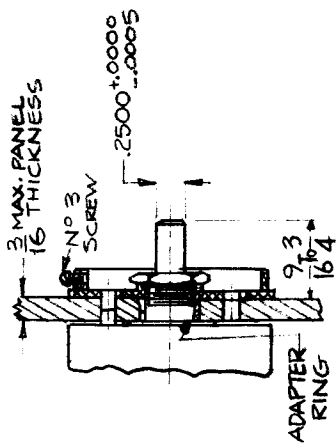
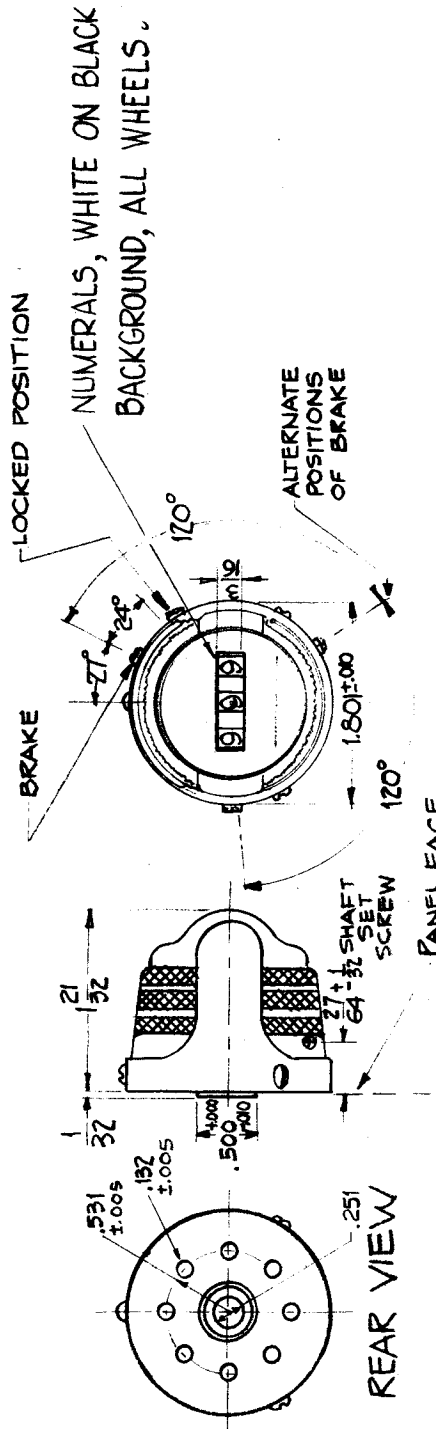




# STANDARD DRAWING

REQ. PER UNIT	MODEL	USED ON
1	TIS-3	ASST. NO.
		DATE
		9-21-60

CY-108



INTERNAL GEARS ARE TO BE BRASS

Mounting on Panels Over 1/8 Showing Use of Adapter Ring N°61026 To Center Potentiometer

REQ. ITEM	DESCRIPTION	PART NO.	STOCK SIZE	MATERIAL	HEAT TREAT. SPEC.	FINISH & SPEC. NO.
C	MFRS. PART NO. CHG	320.69	GE			
B	TO S401- (1309-BS-200-2) AND GEAR NOTE ADDED	824.64	ASB			
A	Note added for numerals	330.61	4531			
ISSUE ITEM	CHANGED FROM	DATE	CH. NO.	DRAFTS	CHECKER	ENG. APP.
	TOLERANCES					
DEC. DIM. ±						
FRAC. DIM. ±						
ANGULAR DIM. ±						
SCALE: S401-125 (1309A)S896-41						
MAXIMUM ALLOWABLE TOLERANCES HAVE BEEN DETERMINED AND ANY DEVIATIONS WILL BE CAUSE FOR REJECTION. REMOVE ALL BURRS AND SHARP EDGES						
THE TECHNICAL MATERIEL CORP. MAMARONECK, NEW YORK COUNTER, PRECISION						
DRAWN: JWB						
CHECKED: JWB						
FINAL APPROVAL: JWB						
CY-108						

