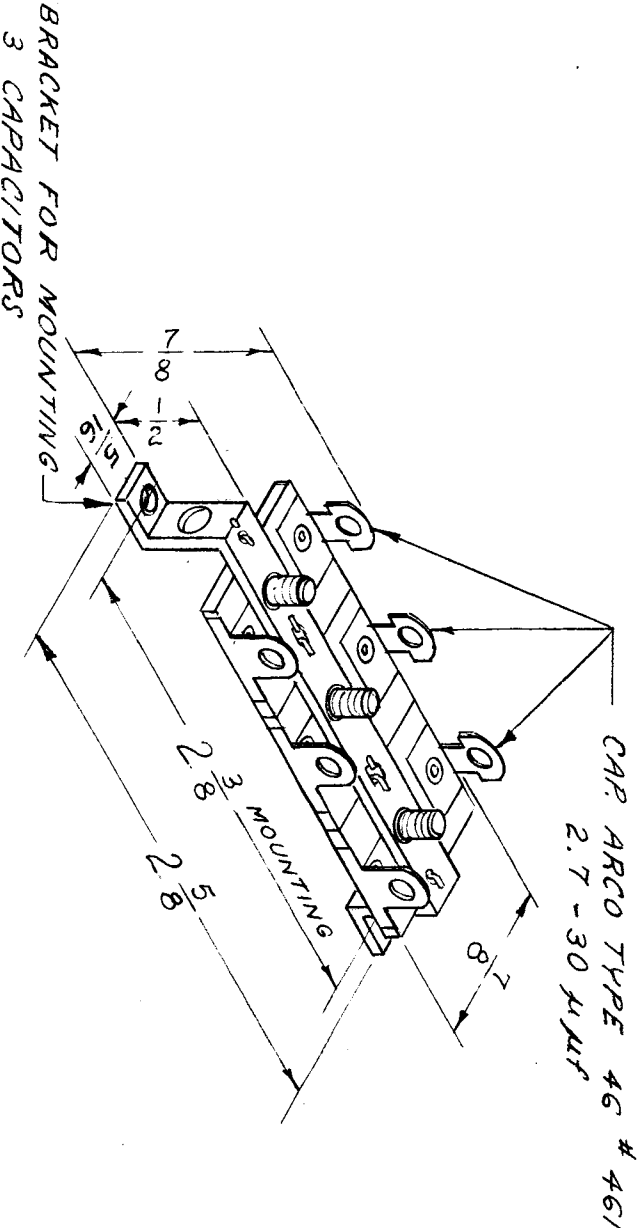


IF IT IS FOUND DESIRABLE TO CHANGE ANY TOLERANCE OR OTHER DETAIL, SPECIFIED ON THIS DRAWING NOTIFY THE PURCHASER PROMPTLY.

MAXIMUM ALLOWABLE TOLERANCES HAVE BEEN DETERMINED AND DEVIATIONS WILL BE CAUSE FOR REJECTION. REMOVE ALL BURRS AND SHARP EDGES

CX-101

| REQ. PER UNIT | | USED ON | | |
|---------------|-------------|-----------|------|--------|
| MODEL | PROJECT NO. | ASSY. NO. | DATE | |
| 2 | GPR | | | 4-6-55 |



| | | | | | | |
|---|--------------|----------------|---------|--------|---------|-----------|
| ISSUE ITEM | CHANGED FROM | DATE | CN. NO. | DRAFTS | CHECKER | ENG. APP. |
| TOLERANCES | | | | | | |
| ALL DEC. DIM. ± | FRAC. DIM. ± | ANGULAR DIM. ± | OTHERS | | | |
| SCALE | | | | | | |
| DRILL, PUNCH, COMMERCIAL STOCK SIZES AND MANUFACTURERS TOLERANCES ARE NOT INCLUDED. | | | | | | |

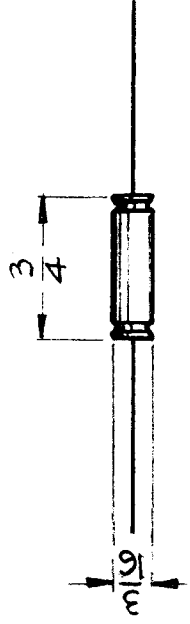
| | | | |
|--------------------|----------------|------------------------------|--------|
| REQ. ITEM | PART NO. | DESCRIPTION | SYMBOL |
| | | THE TECHNICAL MATERIEL CORP. | |
| | | MAMARONECK, NEW YORK | |
| | | CAPACITOR VARIABLE MICA | |
| MATERIAL | WEIGHT PER PC. | | |
| TYPE & TEMPER | | | |
| HEAT TREAT. SPEC. | | | |
| FINISH & SPEC. NO. | | | |
| DRAWN | | P.B. 4-6-55 | |
| CHECKED | | G.T.O. | |
| FINAL APPROVAL | | CX-101 | |

| | | | |
|---------------|-------|-----------|---------|
| REQ. PER UNIT | MODEL | USED ON | DATE |
| 1 | CLL | ASBY. NO. | 5-11-60 |
| 1 | CMO | | 5-11-60 |

CX-105 B

SPECIFICATIONS

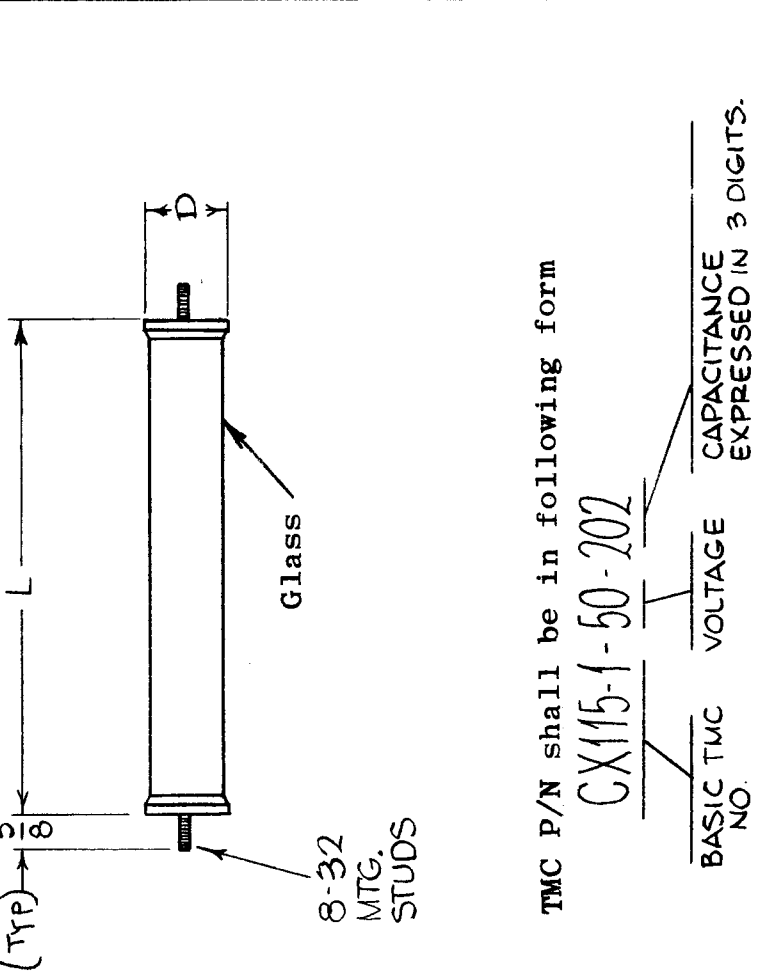
CAP. — 5µf +30%
 TOL. — — — — — 15%
 WDC — 25



| REQ. ITEM | PART NO. | DESCRIPTION | SYMBOL |
|--|---------------------|--|---------|
| B 1 | 3/16 WAS 3/32 | THE TECHNICAL MATERIEL CORP. MAMARONECK, NEW YORK | B |
| A 1 | TOLERANCE WAS ± 15% | CAPACITOR, TANTALUM | |
| ISSUE ITEM | CHANGED FROM | | |
| TOLERANCES | | | |
| DEC. DIM. ± FRAC. DIM. ± ANGULAR DIM. ± | | | |
| DATE | CH. NO. | DRAFTS | CHECKER |
| 6-17-66 | 16403 | | JKB |
| 4-16-63 | 8750 | | JKB |
| SCALE: 5-401-40(29F489) | | | |
| MAXIMUM ALLOWABLE TOLERANCES HAVE BEEN DETERMINED AND ANY DEVIATIONS WILL BE CAUSE FOR REJECTION. REMOVE ALL BURRS AND SHARP EDGES | | | |
| TYPE & TEMPER | HEAT TREAT. SPEC. | DRAWN | CHECKED |
| | | D.P.M. JLB | JLB |
| MATERIAL | | FINAL APPROVAL | |
| | | CX-105 B | |
| FINISH & SPEC. NO. | | ELEC. DES. APP. MECH. DES. APP. | |

| | | | | | | |
|---------|------------|-------------------|------|---------------|--------------|--------------|
| TMC P/N | MFG. P/N | CAPACITANCE Pf | CODE | VOLTAGE DC | "L" ±1/16 | "D" ±1/16 |
| CX115-1 | OF500-202 | 2000 | 50 | 50,000 | 8-1/4 | 1-1/8 |
| CX115-2 | OF800-102A | 1000 | 80 | 80,000 | 9-1/2 | 1-5/8 |

| | | | |
|---------------|--------|------------|----------|
| REQ. PER UNIT | MODEL | USED ON | DATE |
| 3 | HVRB-2 | ASS'Y. NO. | 11-22-65 |
| 3 | HVRC-2 | | 11-22-65 |



(TYP) → 3/8

TMC P/N shall be in following form
CX115-1-50-202

BASIC TMC NO. VOLTAGE CAPACITANCE

SPECIFICATIONS

- Temp. Range: -55°C to +85°C at rated voltage.
- 55°C to +105°C at 60% rated voltage.
- Test Voltage: 200% rated voltage for one minute.
- Maximum Altitude: 100,000 feet (non-operating).
- Power Factor: 1% maximum at 60 cps.
- Life: 250 Hours at 85°C at 140% rated voltage.

| | | | | |
|-----------|--------------------|------------------|--|----------|
| REQ. ITEM | PART NO. | BUDETTI | DESCRIPTION | SYMBOL |
| | | | THE TECHNICAL MATERIEL CORP. MAMARONECK. NEW YORK | |
| | STOCK SIZE | | CAPACITOR, FIXED PLASTIC | |
| | MATERIAL | | | |
| | TYPE & TEMPER | HEAT TREAT. SPEC | DRAWN | CHECKED |
| | | | Jc | 11/16/65 |
| | FINISH & SPEC. NO. | ELEC. DES. APP. | MECH. DES. APP. | |
| | | | | CX115 |

ORIGINAL RELEASE 1/17/66
 CHART REVISED
 CX115-2 ADDED

SCALE S401-55

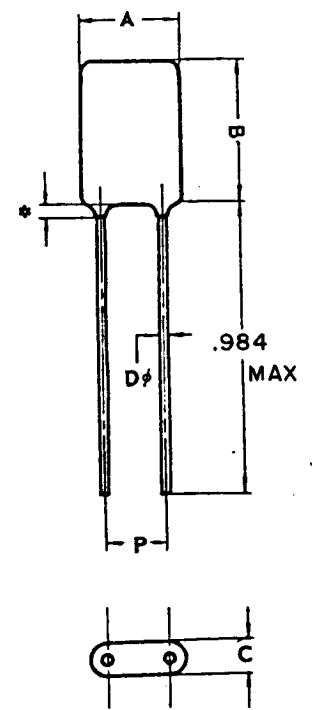
UNLESS OTHERWISE SPECIFIED
 DIMENSIONS ARE IN INCHES AND INCLUDE
 CHEMICALLY APPLIED OR PLATED FINISHES

FRACTIONS ± 1/64
 ANGLES ± 0° 30'

DECIMALS
 .X ± .05
 .XX ± .01
 .XXX ± .005

| APPLICATION | | | REVISIONS | | | | | | |
|-------------|---------------|-----------|-----------|-----------------------|--------|----------|-------|------|------|
| QTY | MODEL USED ON | ASS'Y NO. | LTR | DESCRIPTION | DATE | E.M.N.NO | DRAFT | CHKD | APPD |
| | | | Ø | ORIG RELEASE FOR PROD | 4/8/70 | | CV | | |

Working volt 100 V DC
 Test voltage: 250 V DC
 Operating temperature range: -25 to +85°C
 Insulation resistance: at 20°C, 100 VDC: 50,000 M Ω min.
 Dissipation: less than 0.9%, at 20°C, 1000 Hz.
 Marking: capacity, voltage, tolerance letter K or M



| Cat. No. | Capacity pf | Width A Max. | Height B Max. | Thickn. C Max. | Wire Dia. D | Spacing Min. P |
|----------|-------------|--------------|---------------|----------------|-------------|----------------|
| PD-1 | 1000 | .196 | .472 | .118 | .016 | .079 |
| PD-1.5 | 1500 | .216 | .472 | .118 | .016 | .079 |
| PD-2 | 2000 | .216 | .472 | .118 | .016 | .079 |
| PD-2.2 | 2200 | .216 | .472 | .118 | .016 | .079 |
| PD-3 | 3000 | .216 | .472 | .118 | .016 | .079 |
| PD-3.3 | 3300 | .216 | .472 | .118 | .016 | .079 |
| PD-4 | 4000 | .216 | .472 | .118 | .016 | .079 |
| PD-4.7 | 4700 | .216 | .472 | .118 | .016 | .079 |
| PD-5 | 5000 | .216 | .472 | .118 | .016 | .079 |
| PD-6.8 | 6800 | .275 | .472 | .118 | .016 | .118 |
| PD-8 | 8000 | .275 | .472 | .118 | .016 | .118 |
| PD-10 | 10000 | .275 | .472 | .118 | .016 | .118 |
| PD-15 | 15000 | .275 | .472 | .118 | .016 | .138 |
| PD-20 | 20000 | .295 | .472 | .137 | .016 | .138 |
| PD-22 | 22000 | .354 | .472 | .157 | .016 | .157 |
| PD-30 | 30000 | .354 | .472 | .157 | .016 | .177 |
| PD-33 | 33000 | .354 | .531 | .157 | .016 | .197 |
| PD-40 | 40000 | .354 | .531 | .157 | .019 | .197 |
| PD-47 | 47000 | .354 | .531 | .177 | .019 | .177 |
| PD-50 | 50000 | .354 | .531 | .177 | .019 | .177 |
| PD-60 | 60000 | .354 | .531 | .196 | .019 | .177 |
| PD-68 | 68000 | .354 | .531 | .196 | .019 | .177 |
| PD-80 | 80000 | .433 | .531 | .236 | .019 | .196 |
| PD-100 | 100000 | .452 | .531 | .275 | .019 | .216 |
| PD-150 | 150000 | .511 | .551 | .314 | .019 | .255 |
| PD-200 | 200000 | .629 | .629 | .314 | .027 | .334 |
| PD-220 | 220000 | .629 | .629 | .314 | .027 | .334 |

* Extension of paint on leads 1.5mm max.

CX119 103 M
 BASIC TMC P/N CAPACITANCE IN pf, SEE CHART, 1ST 2 DIGITS ARE SIGN. FIGS. 3RD DIGIT IND. NO. OF ZEROS TOLERANCE M=20% K=10%

| | | | | | | | |
|---|-------------|--------------------|------|--|-----------------|---------|-------|
| UNLESS OTHERWISE SPECIFIED DIMENSIONS ARE IN INCHES AND INCLUDE CHEMICALLY APPLIED OR PLATED FINISHES | | REQ'D | ITEM | PART NUMBER | DESCRIPTION | SYM. | |
| LIST OF MATERIAL | | | | | | | |
| DECIMALS FRACTIONS .x ± .05 TOLS. 1/64 .xx ± .01 ANGLES .xxx ± .005 0°-30° | | FINAL APPROVAL | | THE TECHNICAL MATERIEL CORP. MAMARONECK, NEW YORK | | | |
| MATERIAL | MECH. DES. | DATE | | FIXED CAPACITOR POLYESTER / EPOXY DIPPED | | | |
| FINISH | ELECT. DES. | DATE | | | | | |
| | CHECKED | DATE | | | | | |
| | DRAWN | DATE | | | | | |
| NOTICE TO PERSONS RECEIVING THIS DRAWING THE TECHNICAL MATERIEL CORPORATION claims proprietary right in the material disclosed hereon. This drawing is issued in confidence for engineering information only and may not be reproduced or used to manufacture anything shown hereon without permission from THE TECHNICAL MATERIEL CORPORATION to the user. This drawing is loaned for mutual assistance and is subject to recall at any time. | | | | SIZE | CODE IDENT. NO. | DWG NO. | ISSUE |
| | | | | A | 82679 | CX 119 | Ø |
| | | | | SCALE | SHEET | | OF |