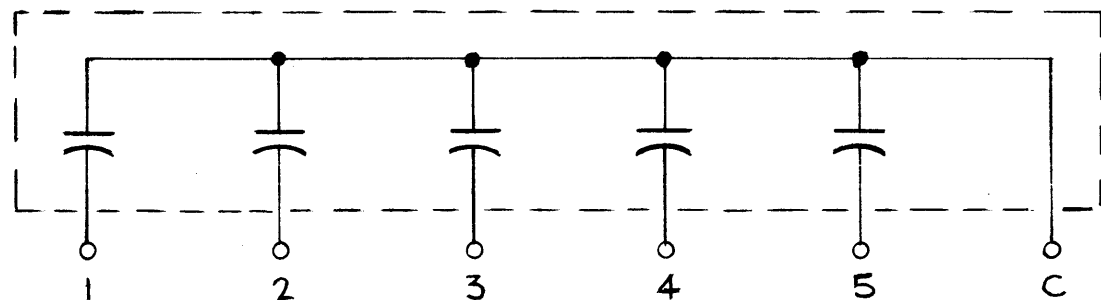


TMC PART NUMBER	CAPACITANCE (μf) TO COM. TERM.					VOLTAGE MAX.	USED ON	Q'TY REQ'D
	TERM.#1	TERM.#2	TERM.#3	TERM.#4	TERM.#5			
CX-110-1	.051	.0765	.1275	.255	.765	100VDC	MAF-1	2
CX-110-2	.0796	.1194	.1990	.398	1.194	100VDC	MAF-1	2

SPECIFICATIONS:

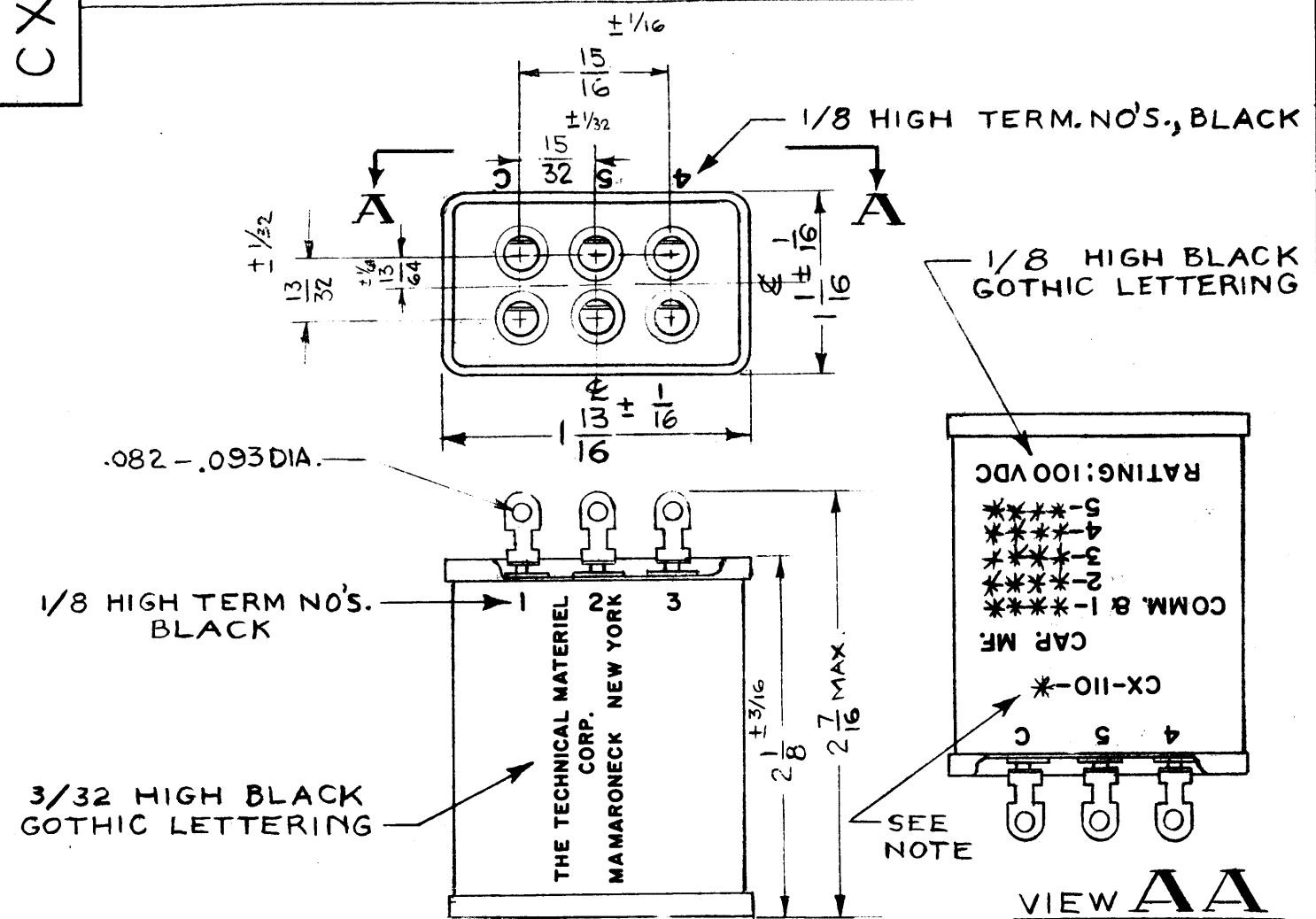
1. QUANTITY OF SECTIONS — 5
2. WORKING VOLTAGE DATA:
 - A) RATING — SEE CHART
 - B) FLASH TEST — 200VDC BETWEEN TERMINALS
3. CAPACITANCE TOL. $\pm 5\%$.
4. OPERATING TEMPERATURE: $-55^{\circ}C$ TO $85^{\circ}C$
5. CASE DATA:
 - A) MATERIAL — METAL, STYLE CP70 MIL-C-25
 - B) HERMETICALLY SEALED
6. TERMINAL DATA: SOLDER LUGS; QUANTITY 6; TERMS. NOT GRD. TO CASE
7. MOUNTING DATA — BRACKETS CPO7SA2



SCHMATIC DIAGRAM

CX-110

REVISIONS						
SYM	DESCRIPTION	DATE	E.M.N. NO.	DRAFT	CHKD	APPD
X1	ADDED S401-81. REVISED DIM. TO CONFORM	2/13/64		TQ.		JRL
O	ORIGINAL RELEASE FOR PRODUCTION	4/24/64	O	A.M.	@	



NOTE:
 * INDICATES DASH NO. PER ORDER TO BE INSERTED & CAPACITANCE ACCORDING TO DASH NO.

S401-112: (17750)-1
 (17751)-2
 S401-81: (2920)-1
 (2921)-2

STANDARD DRAWING

Q'TY./UNIT		MODEL USED ON		ASS'Y. NO.
SCALE		CODE	SEE NOTE	
1:1		C		

THE CONTENTS OF THIS DRAWING ARE THE EXCLUSIVE PROPERTY OF THE TECHNICAL MATERIEL CORP. ITS UNAUTHORIZED USE OR REPRODUCTION IN WHOLE OR IN PART IS STRICTLY FORBIDDEN.

REQ'D.	ITEM	PART NUMBER	DESCRIPTION	SYMBOL
LIST OF MATERIAL				
MATERIAL		THE TECHNICAL MATERIEL CORP. MAMARONECK, NEW YORK		
FINISH		TITLE CAPACITOR, FIXED MYLAR DIELECTRIC		
UNLESS OTHERWISE SPECIFIED DIMENSIONS ARE IN INCHES AND INCLUDE CHEMICALLY APPLIED OR PLATED FINISHES		DRAWN T. RAMIREZ	DATE 10/10/63	FINAL APPROVAL RJR
DECIMALS .X \pm .05 .XX \pm .01 .XXX \pm .005		CHECKED @	DATE 4-23-64	DATE 4/20/64
FRACTIONS $\pm 1/64$ ANGLES $\pm 0^{\circ} 30'$		ELECT. DES. JRL	DATE 1/14/64	CX-110
TOLERANCES		MECH. DES. JC	DATE 6-25-64	O
				REV. LTR.