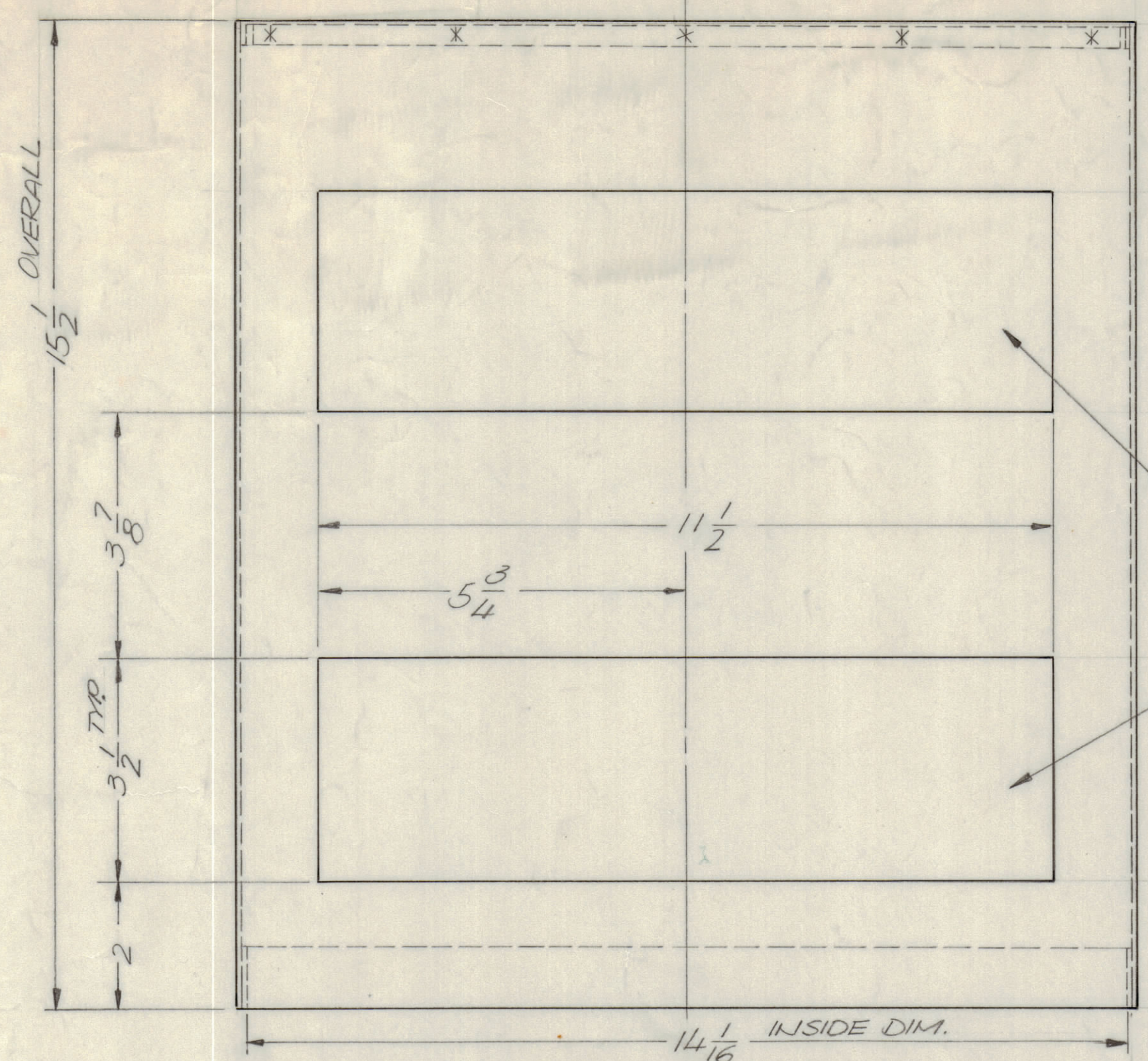
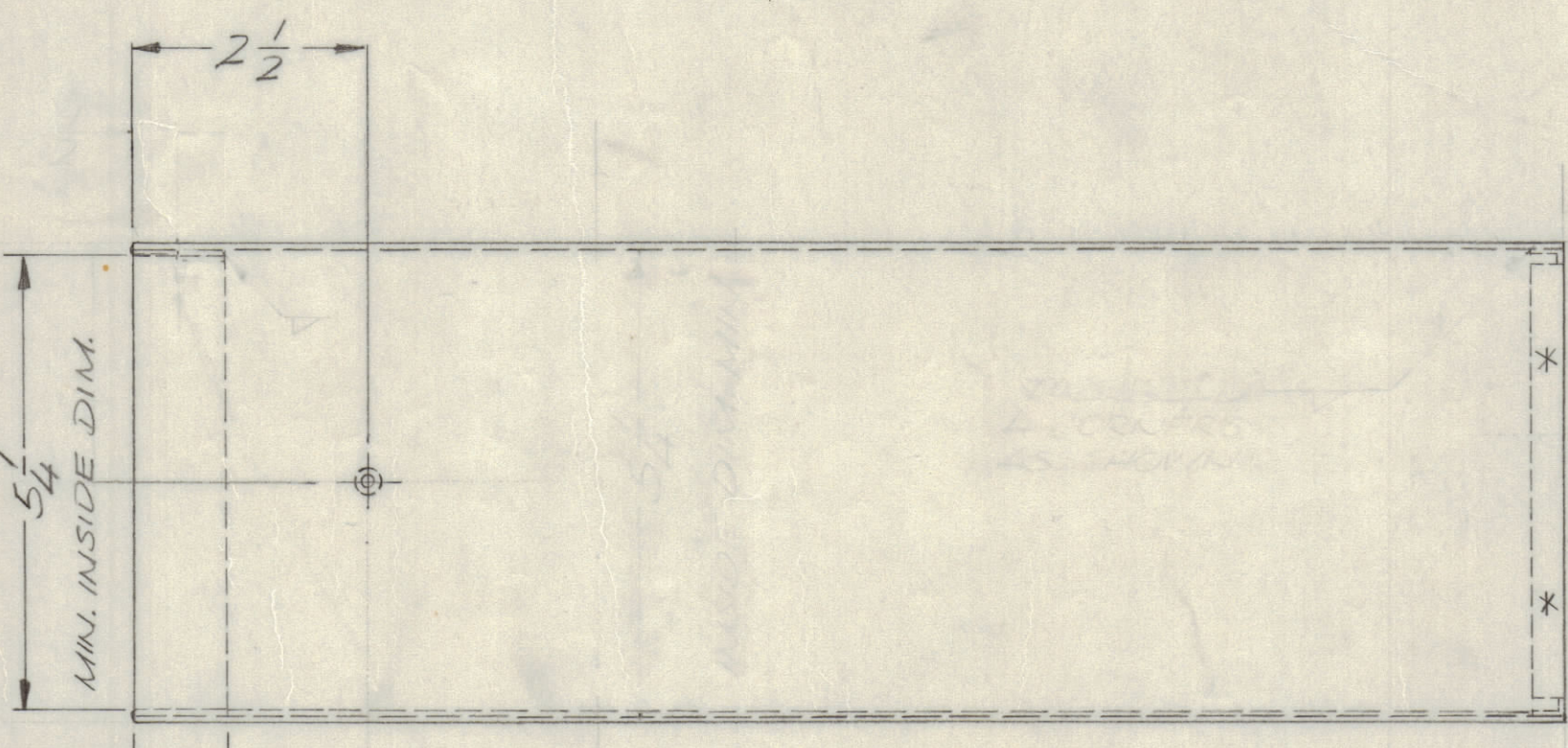
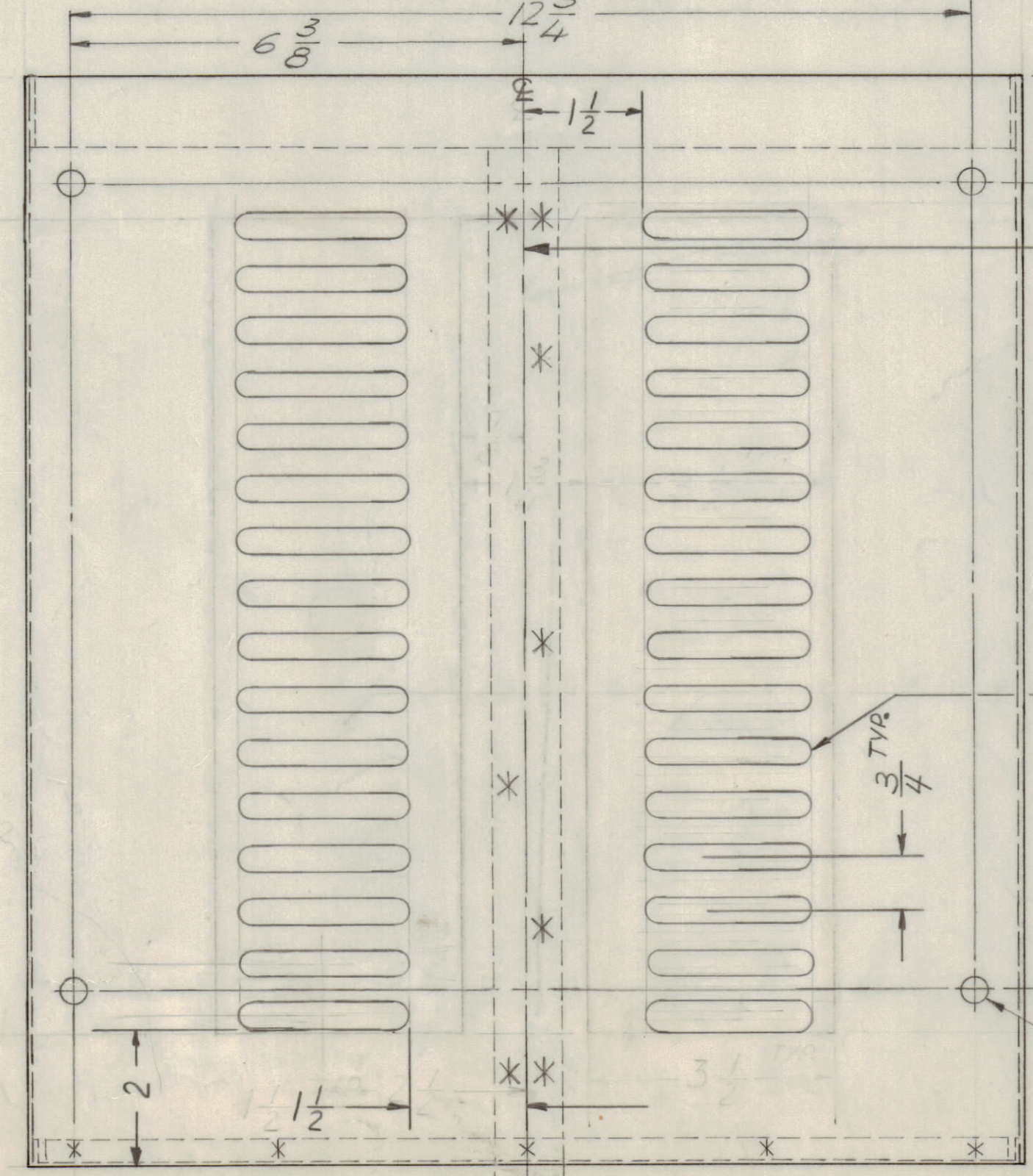
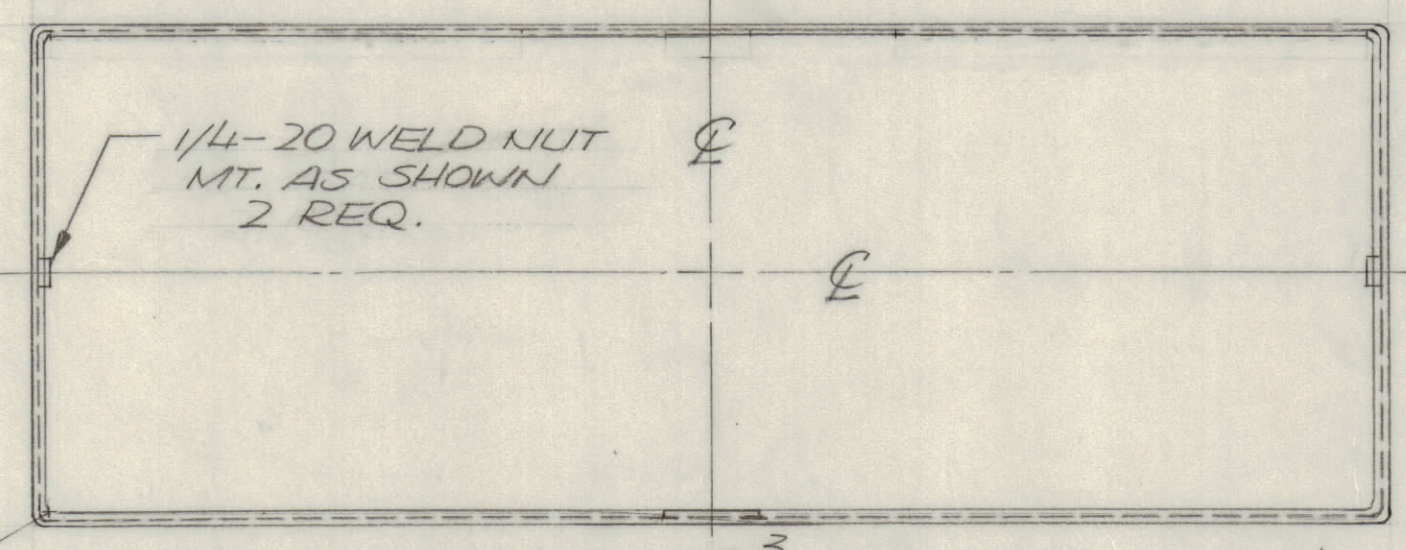
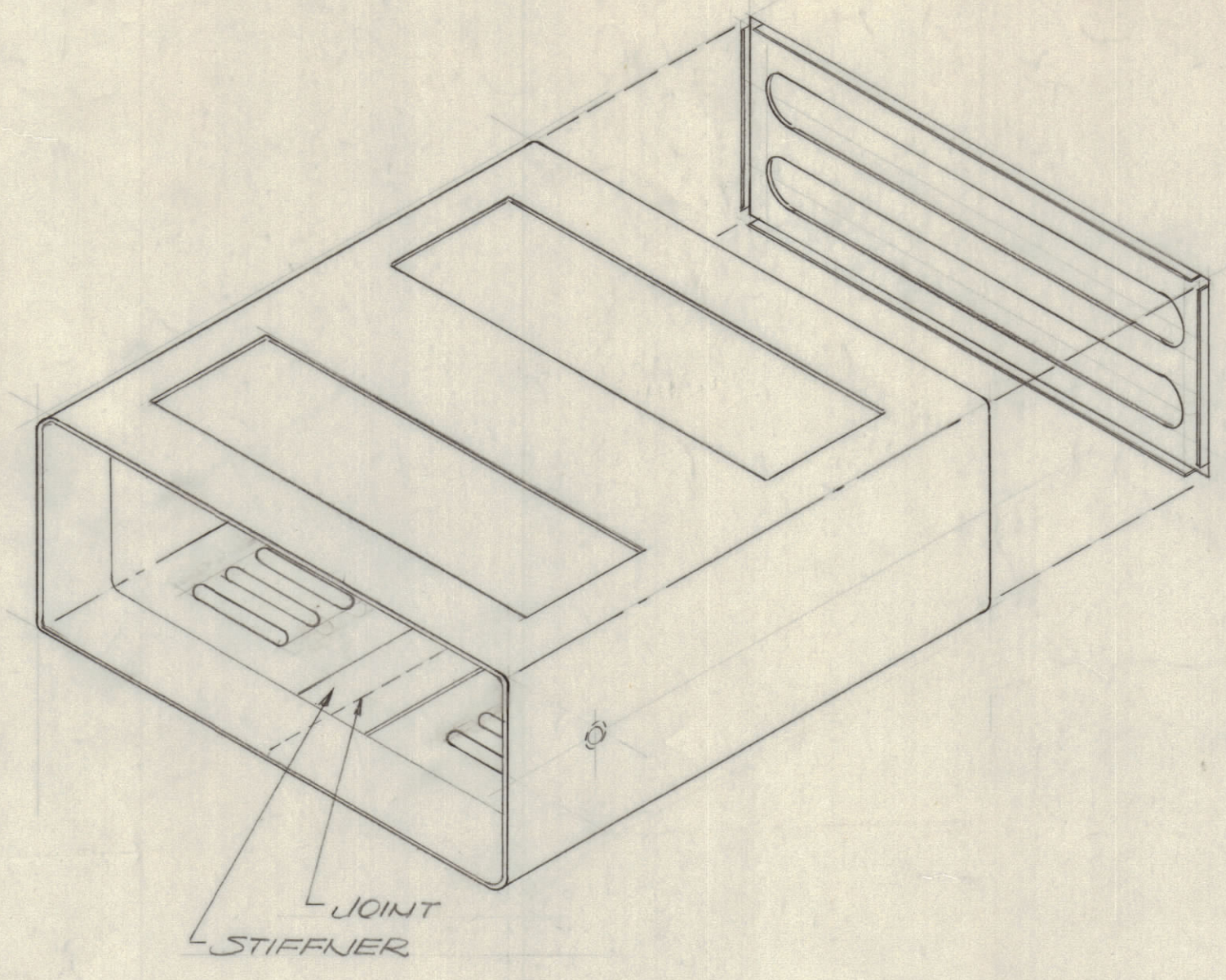


REVISIONS							
E.M.N.O.	DRAFT	CHKD	ZONE	LTR	DESCRIPTION	DATE	APPROVED
21265	DV				ORIGINAL RELEASE FOR PRODUCTION	4-5-74	
	F.I.			A	PERFORATIONS REMOVED, SLOTS ADDED	7-7-75	



TOP ONLY. 064 PERFORATED MATL.
 .072 DIA. HLS ON 3/32 CENTERS
 STAGGERED 2 PLACES.

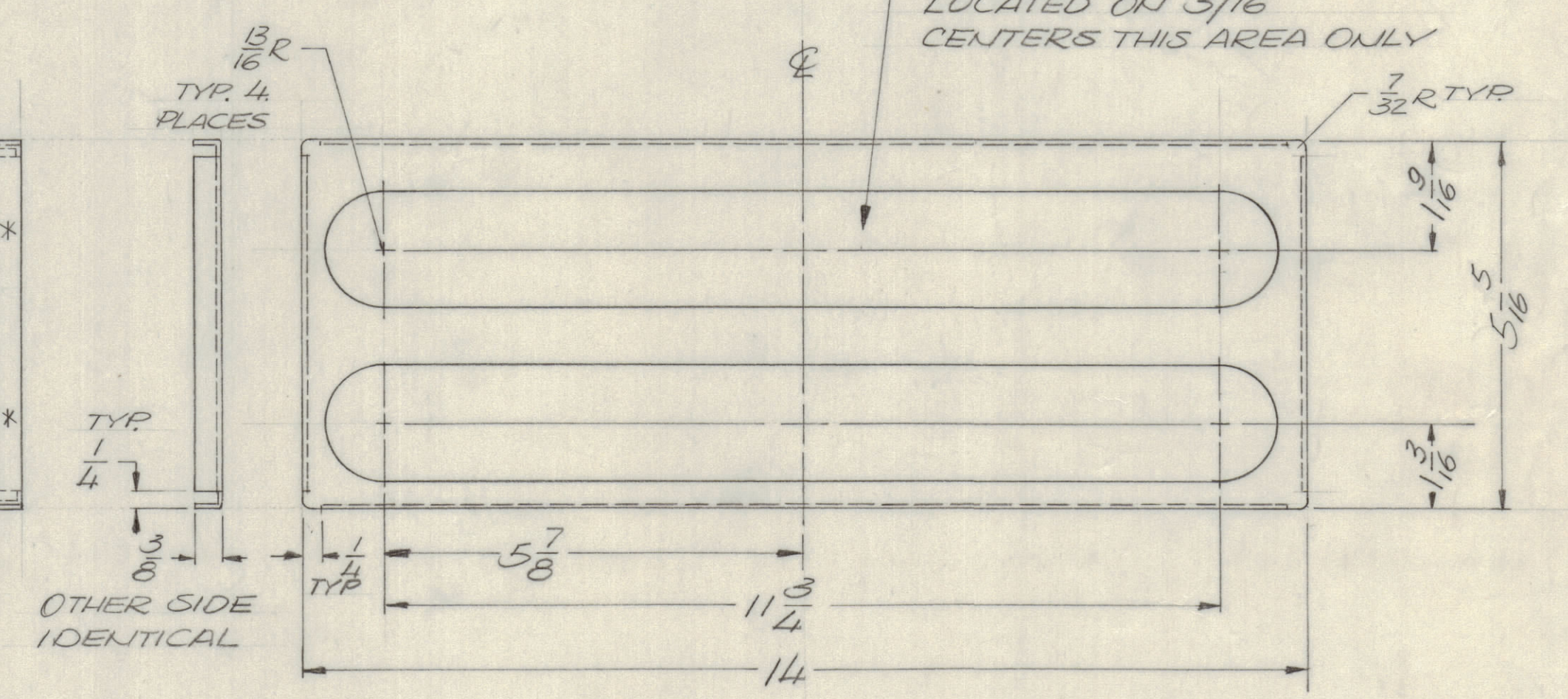


SAFETY EDGE
 ALL AROUND
 FRONT ONLY

JOINT TO FOLLOW Q (BOTTOM) COVER
 WITH STIFFNER SUPPORT (SEE DETAIL)
 LOCATED AS SHOWN. SPOT WELD
 AS SHOWN (X)

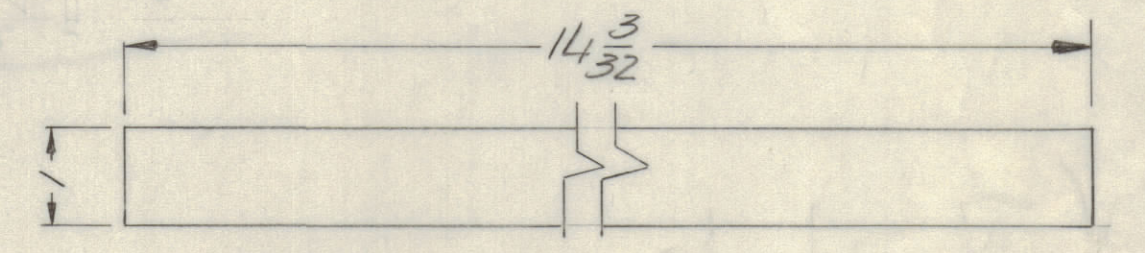
SLOT 3/8 X 2 TYP. 5/32 DIA. HOLES
 STAGGERED 2 PLACES
 BOTTOM ONLY

Ø1/8 DIA. 4 REQ.



PERFORATED AREA
 5/32 DIA. HOLES
 LOCATED ON 3/16
 CENTERS THIS AREA ONLY

REAR DETAIL



STIFFNER SUPPORT DETAIL
 MATL: 18 GA. CRS

- FINISH NOTES:
- S404 - IRIDITE 14-2 AL-COAT.
 - S114 - ZINC CHROMATE PRIMER } FRONT AND EDGES ONLY
 - S115 - SMOOTH GRAY ENAMEL } FRONT AND EDGES ONLY
- PRIME AND PAINT PER CUSTOMER'S SPECIFICATIONS

QTY / UNIT	MODEL USED ON	ASSY NO.
	TMA350 TM125	
APPLICATION		
CODE		

NOTICE TO PERSONS RECEIVING THIS DRAWING
 THE TECHNICAL MATERIEL CORPORATION claims proprietary right in the material disclosed herein. This drawing is issued in confidence for engineering information only and may not be reproduced or used to manufacture anything shown hereon without permission from THE TECHNICAL MATERIEL CORPORATION to the user. This drawing is loaned for mutual assistance and is subject to recall at any time.

TOLERANCES ON DIMENSIONS ARE IN INCHES AND INCLUDE CHEMICALLY APPLIED OR PLATED FINISHES	
DECIMALS	FRACTIONS
.X ± .05	± 1/64
.XX ± .01	ANGLES ± 0° - 30'
.XXX ± .005	

QTY. REQ.	ITEM	PART NO.	DESCRIPTION	SYMBOL
LIST OF MATERIAL				
THE TECHNICAL MATERIEL CORP. MAMARONECK, NEW YORK				
CASE, EQUIPMENT				
SIZE		CODE	IDENT NO.	DWG NO.
D 82679				CW107
SCALE 1/2		SHEET		OF