

STANDARD DRAWING

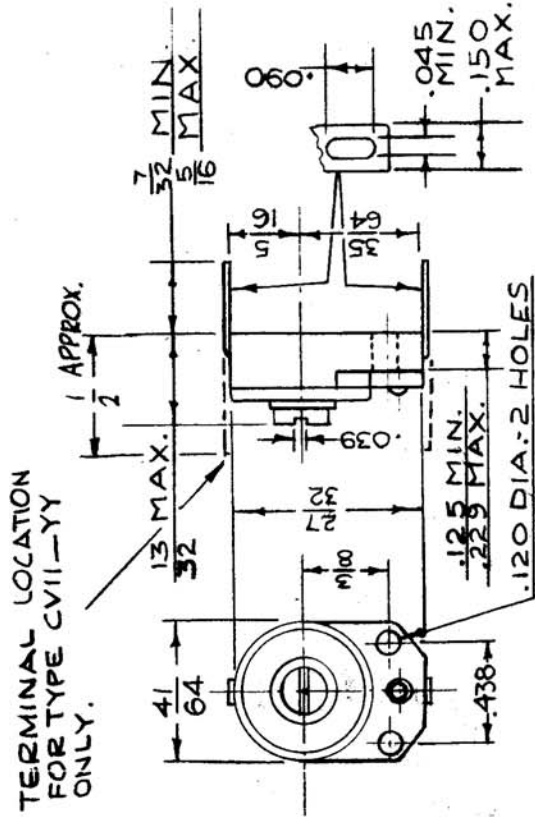
CVII

IT IS PREFERRED TO CHANGE ANY TOLERANCE OR OTHER DETAIL SPECIFIED ON THIS DRAWING NOTIFY THE PURCHASER PROMPTLY.

MAXIMUM ALLOWABLE TOLERANCES HAVE BEEN DETERMINED AND DEVIATIONS WILL BE CAUSE FOR REJECTION. REMOVE ALL BURRS AND SHARP EDGES

USED ON
MODEL PROJECT NO. ASSY. NO.

TYPE DESIGNATION	CHARACTERISTIC LETTER	RATED TEMPERATURE COEFFICIENT	MINIMUM CAPACITANCE	MAXIMUM CAPACITANCE
CVIIA070	A	0	1.5 μ pf	7.0 μ pf
CVIIA120	A	0	3.0	12.0
CVIIA250	A	0	4.5	25.0
CVIIB130	B	-300	3.0	13.0
CVIIB200	B	-300	5.0	20.0
CVIIC300	C	-500	4.0	30.0
CVIIC450	C	-500	7.0	45.0
CVIID060	D	-650	2.0	6.0
CVIID300	D	-650	4.0	30.0
CVIID450	D	-650	7.0	45.0



SY II A 070 YY
COMPONENT STYLE CHAR. CAP.

INDICATES A NON MILITARY ITEM WITH RESPECT TO TERMINAL STYLE, BUT MEETS ALL OTHER SPECIFICATIONS.

REF. MIL-C-81A AND AMEND.

REP. ITEM	PART NO.	DESCRIPTION	SYMBOL
ff	ff	THE TECHNICAL MATERIEL CORP. MAMARONECK. NEW YORK	
STOCK SIZE			
ff	ff	CAPACITOR, VARIABLE	
MATERIAL WEIGHT PER PC.			
ff	ff		
TYPE & TEMPER			
ff	ff	G.T.O	
HEAT TREAT. SPEC.			
ff	ff	G.T.O	
FINISH & SPEC. NO.			
ff	ff	CVII	

ISSUE ITEM	CHANGED FROM	DATE	CN. NO.	DRAFTS	CHECKER	ENG. APP.
6	1/2 DIM. ADDED, YY ADDED	7-17-61	11887	SRG		
5	ADDED TOLERANCES .090 DIM					
4	ADDED CVIID300 & D450					
3	REF MIL-C-81A WAS JAN-C-81					
2	DELETED CVIIIC60, C750, D750, D1500					
1	DELETED TEMP. COEF. CHART					

TOLERANCES

DEC. DIM. \pm .010
FRAC. DIM. \pm $\frac{1}{32}$
ANGULAR DIM. \pm

DRILL, PUNCH, COMMERCIAL STOCK SIZES AND MANUFACTURERS TOLERANCES ARE NOT INCLUDED.