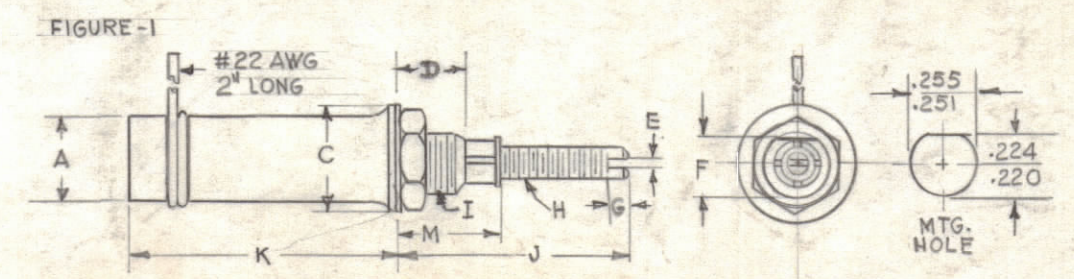


| TMC PART NO. | MFG PART NO. | ELECTRICAL DATA | | | | | | | PHYSICAL DATA | | | | | | | MATERIAL | | | | | |
|--------------|------------------|----------------------|------|--------------------|---|---|------------------|--|----------------|-----|-----|------|------|------|------|----------|----|------------|------|-----------|-------------|
| | | CAPACITANCE RANGE PF | | DC WORKING VOLTAGE | DIELECTRIC STRENGTH MEASURED FOR 5 SEC. AT 50% R.H. AT MAX. CAP. (DC VOLTS) | INSULATION RESISTANCE MEASURED AFTER ONE MINUTE AT 50% R.H. AND 500V DC | Q FACTOR AT 1 MC | TEMP COEFFICIENT OF CAPACITANCE MEASURED AT 100KC PPM/°C | OPER. TEMP. °C | A | C | D | E | F | G | THREADS | | MAX. ±1/32 | M | ADJ SCREW | ROTOR |
| MIN | MAX | H | I | | | | | | | | | | | | | J | K | | | | |
| CV107-1 | VC-50C OR VC-55C | 5.0 | 50.0 | 1250 | 2500 | 10 ⁵ MΩ | 450 | | 17/64 | 3/8 | 1/4 | .028 | .218 | 5/64 | 4-48 | 1/4-28 | 1" | 1" | 3/32 | BRASS | PHOS BRONZE |



NOTES:
 DIELECTRIC-CERAMIC
 BRASS HEXAGON NUT, 5/16 ACROSS FLATS, 3/32 TH'K &
 INTERNAL TOOTH LOCK WASHER SUPPLIED BY MFG'R.

NOTICE TO PERSONS RECEIVING THIS DRAWING
 THE TECHNICAL MATERIEL CORPORATION claims proprietary right in the material disclosed hereon. This drawing is issued in confidence for engineering information only and may not be reproduced or used to manufacture anything shown hereon without permission from THE TECHNICAL MATERIEL CORPORATION to the user. This drawing is loaned for mutual assistance and is subject to recall at any time.
 Property of:
 THE TECHNICAL MATERIEL CORPORATION
 MAMARONECK, NEW YORK

| | | | | | | | |
|--------------------------------|---|-------------|--|---------|--------|---------------|-----------|
| D | UPDATED & REV. (MFG PART NO) | 7-23-61 | C.C. | 7461 | GP | for | 82 |
| C | *E" DIM WAS .025, *J" DIM WAS 61/64 | 10-24-62 | | | | | |
| H6 | 5 SEC. WAS 1 MINUTE ON "DIELECTRIC STRENGTH" | 9- | 29- | 5640 | GH | AB | 16 |
| B | H6 1MC WAS 20MC ON "Q FACTOR" | 61 | | | | | |
| G4 | 3/8 WAS 13/32 ON "M"; 61/64 WAS 15/16 ON "J" | | | | | | |
| A | HT On chart Mfg. Part No. VC-50C was VC-500 (ERROR) | 6-21-61 | 5115 | | | | |
| SYM | ZONE | DESCRIPTION | DATE | CH. NO. | DRAFTS | CHECKER | ENG. APP. |
| UNLESS OTHERWISE SPECIFIED: | | | SCALE DO NOT SCALE | | | | |
| DIMENSIONS ARE IN INCHES | | | MAXIMUM ALLOWABLE TOLERANCES HAVE BEEN DETERMINED AND ANY DEVIATIONS WILL BE CAUSE FOR REJECTION. REMOVE ALL BURRS & SHARP EDGES | | | | |
| TOLERANCES ON FRACTIONS ± 1/64 | | | DECIMALS ± .005 | | | ANGLES ± 1/2° | |

| | | | | |
|---------------|-------|---------|------------|---------|
| REQ. PER UNIT | MODEL | SECTION | ASS'Y. NO. | DATE |
| CV-107-1 (B) | CHG-2 | OVEN | | 6-13-61 |

| REQ. ITEM | PART NO. | DESCRIPTION | SYMBOL |
|--------------------|----------|---|----------------|
| | | THE TECHNICAL MATERIEL CORP. MAMARONECK, NEW YORK | |
| STOCK SIZE | | CAPACITOR, VARIABLE, CERAMIC | |
| MATERIAL | | | |
| TYPE & TEMPER | | | |
| HEAT TREAT. SPEC. | | | |
| FINISH & SPEC. NO. | | | |
| ELEC. DES. APP. | | MECH. DES. APP. | SHEET OF |
| DRAWN | | CHECKED | FINAL APPROVAL |
| CV-107- | | | D |