

5

4

3

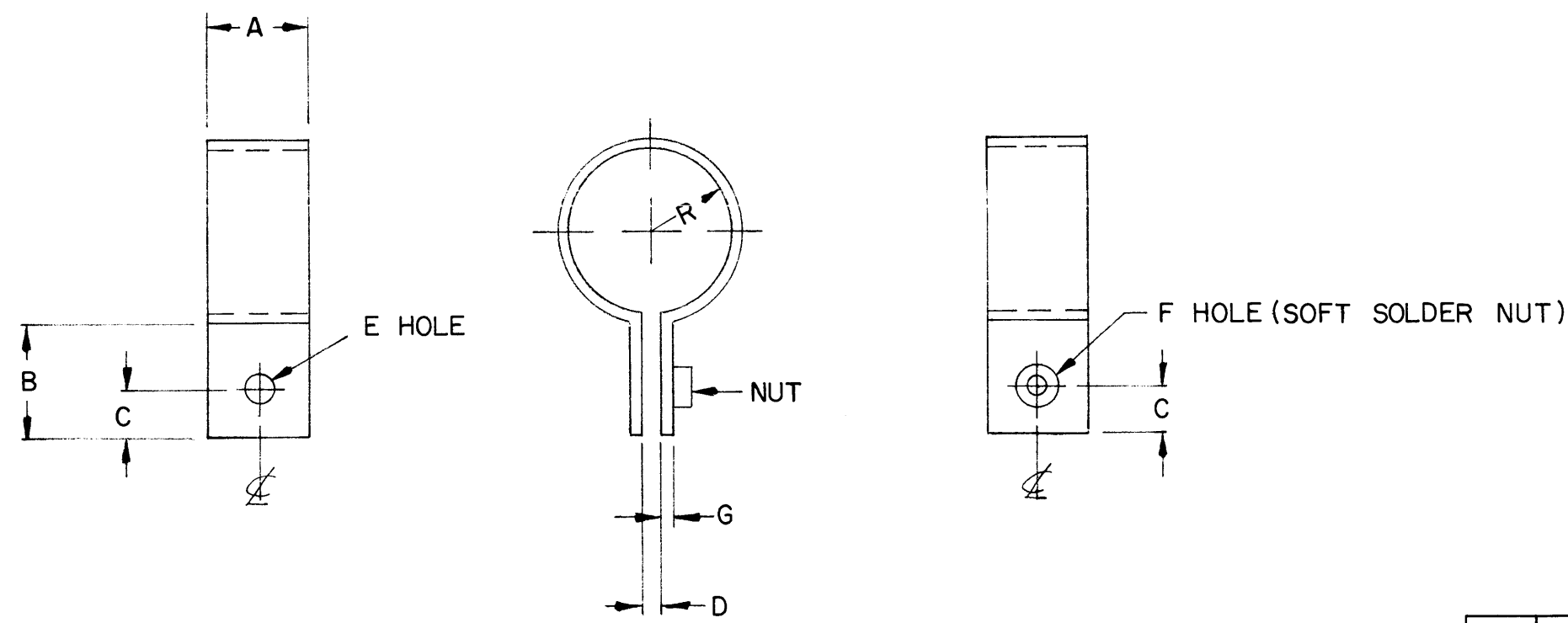
2

1

REVISIONS

ZONE	LTR	DESCRIPTION	DATE	E.M.N.NO	DRAFT	CHKD	APPD
	B	REVISED W/-2 ADD.	6/16/71	20381	GE	W	JEB

TMC PART NUMBER	A	B	C	D	E	F	R	THICKNESS G	NUT	MATERIAL	FINISH
CU 166-1	3/8	5/16	3/32	1/4	5/32	.191 - .194	17/64	.015	NT 129-632-1	HOT ROLLED COPPR.	S245 SIL. PLATE S423 SIL. KOTE
CU 166-2	3/8	1/2	3/16	1/8	5/32	.191 - .194	13/32	.035	NT 129-632-3	HOT ROLLED COPPR.	S245 SIL. PLATE S423 SIL. KOTE



REQ'D	ITEM	PART NUMBER	DESCRIPTION	SYM.
F. BUDETTI LIST OF MATERIAL				
FINAL APPROVAL <i>FB</i>		DATE <i>6/17/71</i>	THE TECHNICAL MATERIEL CORP. MAMARONECK, NEW YORK	
MECH. DES.		DATE		
ELECT. DES. <i>FB</i>		DATE <i>6/16/71</i>		
CHECKED <i>W</i>		DATE <i>6/16/71</i>		
DRAWN <i>GE</i>		DATE <i>6/16/71</i>		
MATERIAL		SIZE		
FINISH		CODE IDENT. NO.		ISSUE
		DWG NO.		
		SCALE		SHEET OF

QTY / UNIT	MODEL USED ON	ASS'Y NO.
1	TLAAIK	
APPLICATION		
CODE		
<p>NOTICE TO PERSONS RECEIVING THIS DRAWING THE TECHNICAL MATERIEL CORPORATION claims proprietary right in the material disclosed hereon. This drawing is issued in confidence for engineering information only and may not be reproduced or used to manufacture anything shown hereon without permission from THE TECHNICAL MATERIEL CORPORATION to the user. This drawing is loaned for mutual assistance and is subject to recall at any time.</p>		

UNLESS OTHERWISE SPECIFIED DIMENSIONS ARE IN INCHES AND INCLUDE CHEMICALLY APPLIED OR PLATED FINISHES

DECIMALS	FRACTIONS
.X ± .05	1/64
.XX ± .01	TOLS. ANGLES
.XXX ± .005	0° .30'

MATERIAL: *AS NOTED*

FINISH: *AS NOTED*

5

4

3

2

1