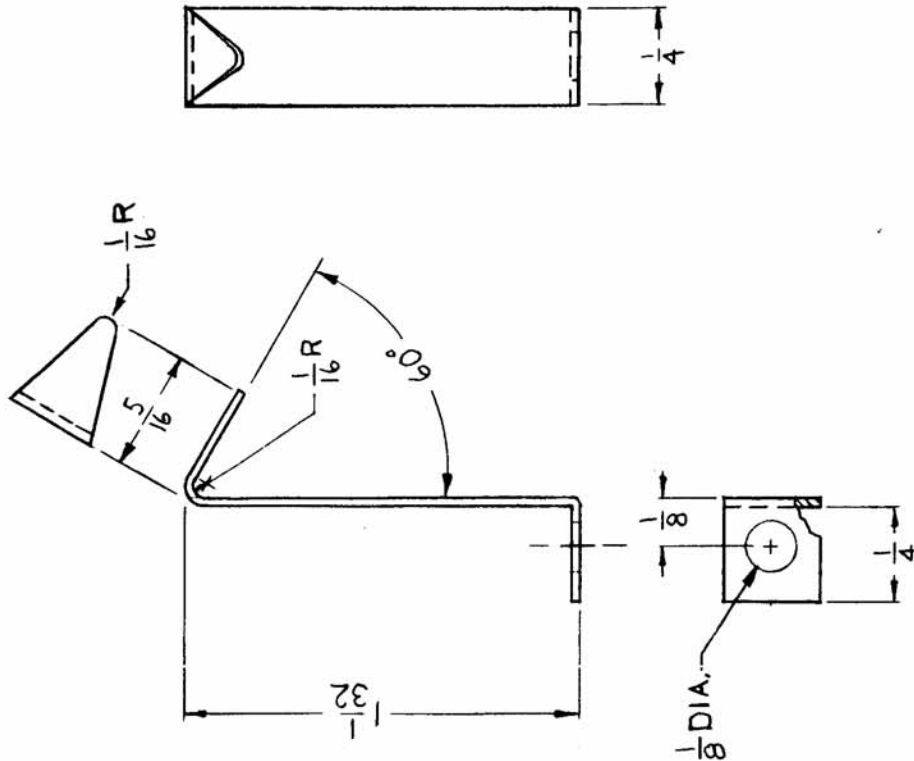


REQ. PER UNIT 1	MODEL CHG-2B	USED ON ASS'Y. NO.	DATE 4-23-65	CU161	Ø
--------------------	-----------------	-----------------------	-----------------	-------	---



NOTE:
USED FOR CLAMPING OF PL105.

REQ. ITEM	PART NO.	DESCRIPTION	SYMBOL
.015		THE TECHNICAL MATERIEL CORP. MAMARONECK, NEW YORK	
	STOCK SIZE		
	PHOSPHOR BRONZE	CLAMP, TIE, DOWN	
	MATERIAL		
	TYPE & TEMPER	DRAWN	
	HEAT TREAT. SPEC.	CHECKED	
	NICKEL PLATED 5-135		
	FINISH & SPEC. NO.		

DATE	CH. NO.	DRAFTS	CHECKER	ENG. APP.
4.17.65	Ø	ØF.		
SCALE 2:1				
UNLESS OTHERWISE SPECIFIED DIMENSIONS ARE IN INCHES AND INCLUDE CHEMICALLY APPLIED OR PLATED FINISHES				
ORIGINAL RELEASE FOR PRODUCTION DESCRIPTION				
TOLERANCES				
FRACTIONS				
DECIMALS				
.X ± .05				
.XX ± .01				
.XXX ± .005				
ANGLES				
± 0° 30'				

Ø POSE
THE TECHNICAL MATERIEL CORP.
MAMARONECK, NEW YORK
CLAMP, TIE, DOWN
DRAWN
CHECKED
FINAL APPROVAL
CU161