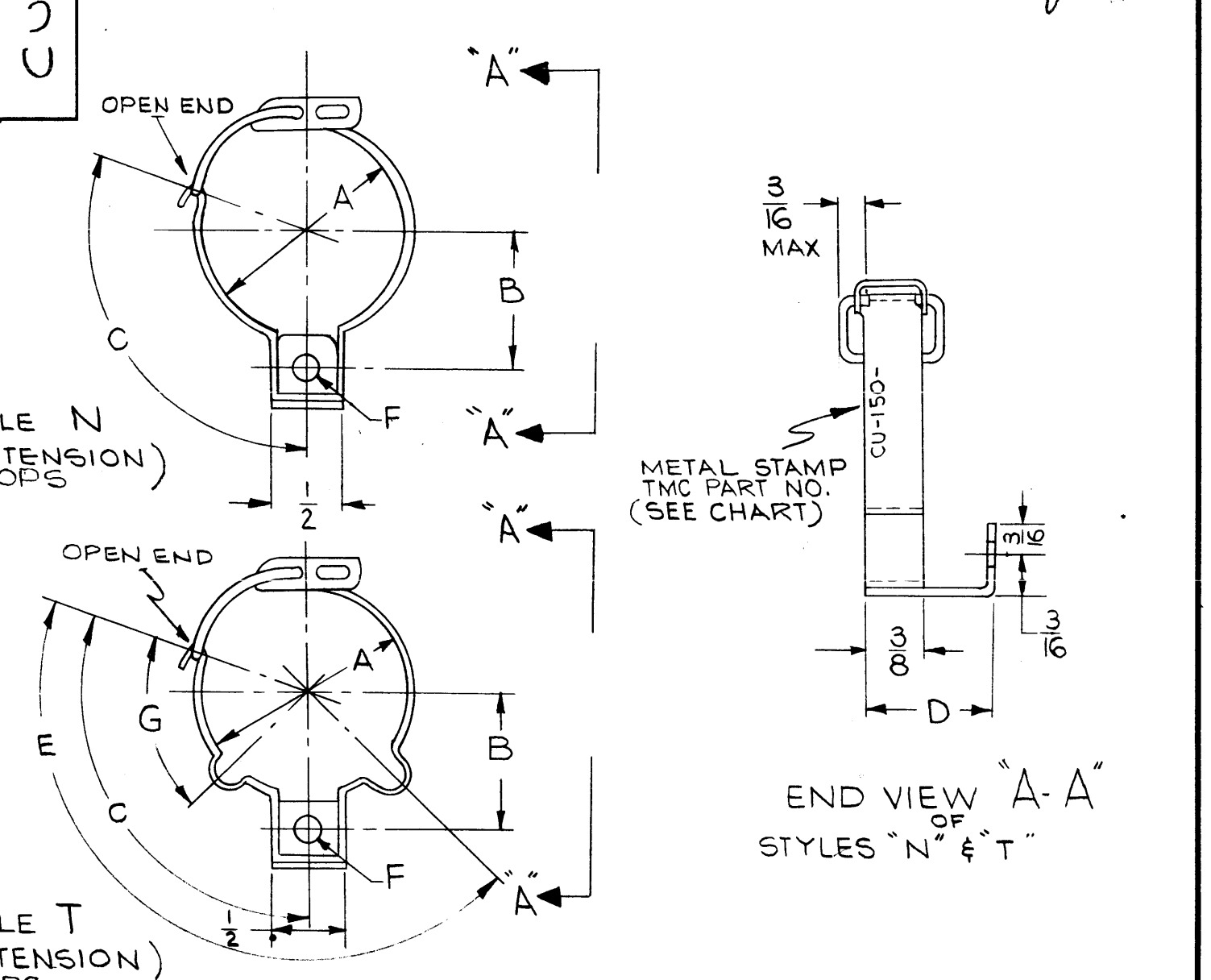


TMC PART NO.	MFRS. REF.	MFRS. PART NO.	STYLE (SEE) (PICT)	DIMENSIONS							FOR USE WITH COMP. TYPE	FOR BASIC JETEC BASE TYPE
				A DIA. TO BE CLAMPED	B ±1/32	C	D	E	F	G		
CU-150-1	A, B		N	1.255	3/4	120°	11/16	NONE	.187	NONE	5Y3GT	B8-6
CU-150-2	A, B		N	1.156	3/4	120°	11/16	NONE	.187	NONE	RR-110	B8-58
CU-150-3	A, B		N	1.375	3/4	120°	7/8	NONE	.187	NONE	OA3	B8-1
CU-150-4	A, B		N	1.500	3/4	35°	1	NONE	.187	NONE	6Y6	B8-11
CU-150-5	A, B		N	1.375	3/4	35°	1 1/4	NONE	.187	NONE	RL158	
CU-150-6	A, B		N	1.375	3/4	120°	11/16	NONE	.187	NONE	CE61, 2 3, T2 (CASE)	
CU-150-6	A, B		N	1.375	3/4	120°	11/16	NONE	.187	NONE	5U4G	

REVISIONS						
SYM	DESCRIPTION	DATE	E.M.N. NO.	DRAFT	CHKD	APPD
A	S401-254 ADDED TO CODE BLOCK	11/3/63	10743	LD	LD	WLB
B	CU150-4 & CU150-5 ADDED	1/20/64	11278	A.M.	LD	LD
C	ON CHART ±1/32 ADD TO "B" ON CU-150-4 "C" WAS 30° ON CU-150-5 "C" WAS 30°	8.26.64	12225	WB	LD	LD
D	ON CHART CU-150-4 & 5 "C" WAS 30-35°	10.12.64	12687	LD	LD	LD
E	CU150-6 ADDED.	3.22.65	13756	LD	LD	LD



- SPECIFICATIONS**
- FOR USE WITH SOCKET TS-101 WITH 3/16 CROWN
 - TYPE: PINLESS, OPEN END
 - MATERIALS: ALL PARTS, STAINLESS STEEL 302, PASSIVATED
 - BAND: .020 THK, SPRING TEMPER
 - BRACKET: .032 THK, 1/4 HARD
 - LEVER: .032 THK, 1/4 HARD
 - SPRING: .061 RD., SPRING TEMPER
 - ALL ANGLES: TOL. ±5°

STANDARD DRAWING

Q'TY./UNIT	MODEL USED ON	ASS'Y. NO.
NONE	MFGR. A-S401-105 MFGR. B-S401-254	

NOTES

THE CONTENTS OF THIS DRAWING ARE THE EXCLUSIVE PROPERTY OF THE TECHNICAL MATERIEL CORP. ITS UNAUTHORIZED USE OR REPRODUCTION IN WHOLE OR IN PART IS STRICTLY FORBIDDEN.

REQ'D.	ITEM	PART NUMBER	DESCRIPTION	SYMBOL
PRITCHARD LIST OF MATERIAL				
MATERIAL			THE TECHNICAL MATERIEL CORP. MAMARONECK, NEW YORK	
FINISH			TITLE RETAINER, ELECT. TUBE	
UNLESS OTHERWISE SPECIFIED DIMENSIONS ARE IN INCHES AND INCLUDE CHEMICALLY APPLIED OR PLATED FINISHES				
DRAWN <i>Adams</i>		DATE 10-1-63	FINAL APPROVAL	
CHECKED <i>Hile</i>		DATE 10-1-63	DATE	
ELECT. DES.		DATE	SHEET	
MECH. DES. <i>Law Gabel</i>		DATE 10-1-63	REV. LTR.	