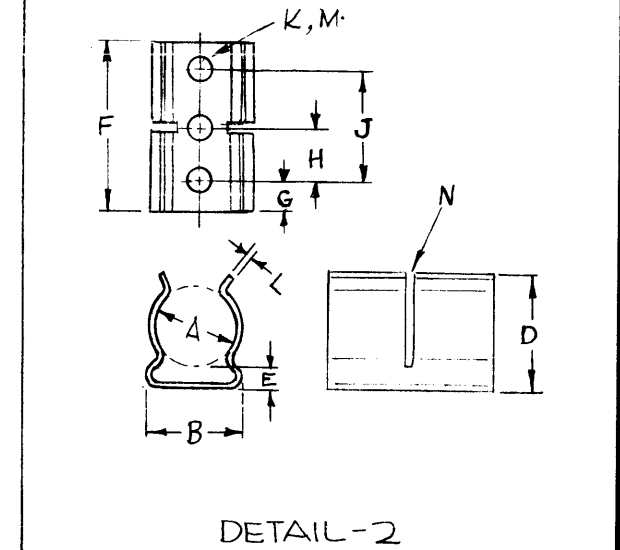
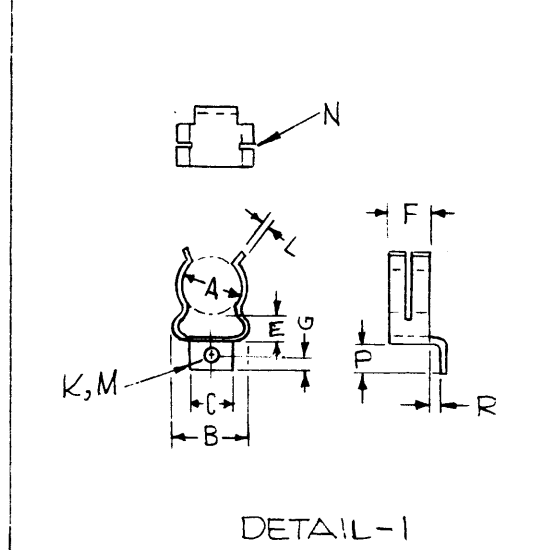
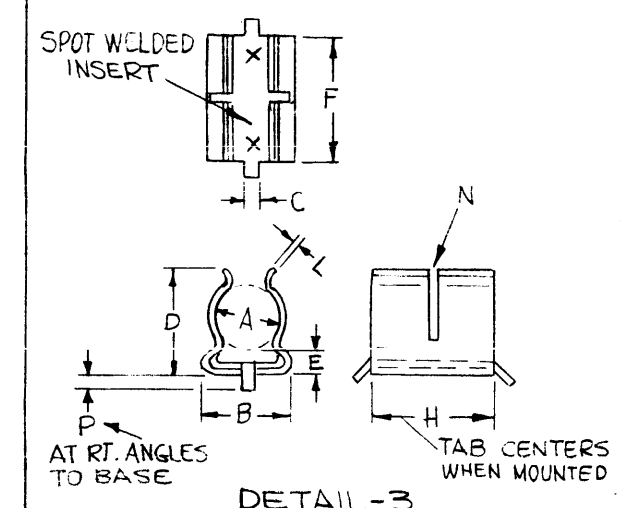
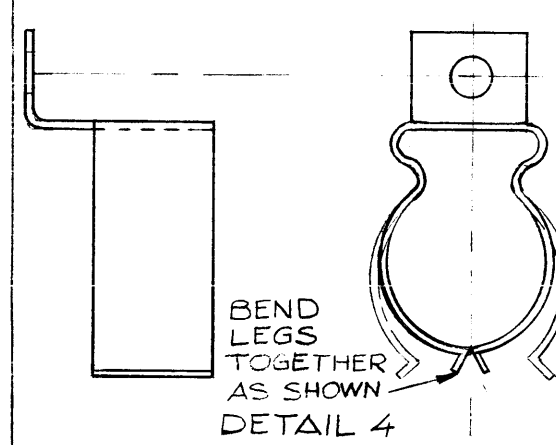


| TMC P/N | MFG P/N | DETAIL NO. | A ±.010 ±.005 | B ±.010 | C ±.005 | D ±.010 | E ±.010 | F ±.010 | G ±.005 | H ±.005 | J ±.005 | K DIA ±.003 ±.001 | L ±.002 ±.001 | M NO. OF HOLES | N NO. OF SLOTS | P ±.010 | R ±.010 ±.000 |
|---------|-----------|------------|---------------------|------------|------------|------------|------------|------------|------------|------------|------------|-------------------------|---------------------|-------------------|-------------------|------------|---------------------|
| CU133 | 6009-36CC | 1 | .312 | .341 | .250 | .385 | .066 | .218 | .109 | — | — | .093 | .016 | 1 | — | .218 | .131 |
| CU133-2 | 6001-51CC | 2 | .375 | .395 | — | .457 | .078 | 1.500 | .187 | .562 | 1.125 | .093 | .010 | 3 | — | — | — |
| CU133-3 | 6001-56CC | 2 | .375 | .395 | — | .457 | .078 | .750 | .156 | .437 | — | .093 | .010 | 2 | — | — | — |
| CU133-4 | 6029-1CC | 3 | .312 | .333 | .046 | .377 | .067 | .476 | — | .500 | — | — | .010 | — | — | .140 | — |
| CU133-5 | 6015-14A | 2 | .175 | .195 | — | .250 | .062 | .250 | .125 | — | — | .093 | .010 | 1 | 0 | — | — |
| CU133-6 | 6009-3600 | 4 | .312 | .341 | .250 | .385 | .066 | .218 | .109 | — | — | .093 | .016 | 1 | — | .218 | .131 |

| REVISIONS | | | | | |
|-----------|---|---------|------------|-------|-----------|
| SYM | DESCRIPTION | DATE | E.M.N. NO. | DRAFT | CHKD APPD |
| A | REVISED & REDRAWN | 7-29-64 | 11983 | SRG | SRG JC |
| B | CU133-5 ADDED TO CHART CHART UPDATED | 8.26.64 | 12205 | WFB | WFB JC |
| C | TMC P/N: CU133 WAS CU133-1 | 1-5-65 | 13202 | SRG | SRG JC |
| D | ADD DET. 4 & CU133-6 TO P/N CHT. | 5.8.69 | 19414 | GE | GE JC |

NOTE ~ MAKE FROM CU133-1



NOTE:
SLOT WIDTH .031 ±.010 EVENLY SPACED

| REQ'D. | ITEM | PART NUMBER | DESCRIPTION | SYMBOL |
|---|------|------------------------------|--------------|----------------|
| LIST OF MATERIAL | | | | |
| MATERIAL | | THE TECHNICAL MATERIEL CORP. | | |
| BERYLLIUM COPPER | | MAMARONECK, NEW YORK | | |
| FINISH | | TITLE | | |
| CADMIUM PLATE | | CLIP, HEAT SINK | | |
| UNLESS OTHERWISE SPECIFIED DIMENSIONS ARE IN INCHES AND INCLUDE CHEMICALLY APPLIED OR PLATED FINISHES | | DRAWN SRG | DATE 7-29-64 | FINAL APPROVAL |
| | | CHECKED | DATE 7/30/64 | |
| | | ELECT. DES. | DATE | CU133 |
| | | MECH. DES. | DATE 7/31/64 | |
| | | SHEET | | REV. LTR. |

| QTY./UNIT | MODEL USED ON | ASS'Y. NO. |
|-----------|---------------|------------|
| SCALE | CODE C | 5401-105 |

THE CONTENTS OF THIS DRAWING ARE THE EXCLUSIVE PROPERTY OF THE TECHNICAL MATERIEL CORP. ITS UNAUTHORIZED USE OR REPRODUCTION IN WHOLE OR IN PART IS STRICTLY FORBIDDEN.

NOTES