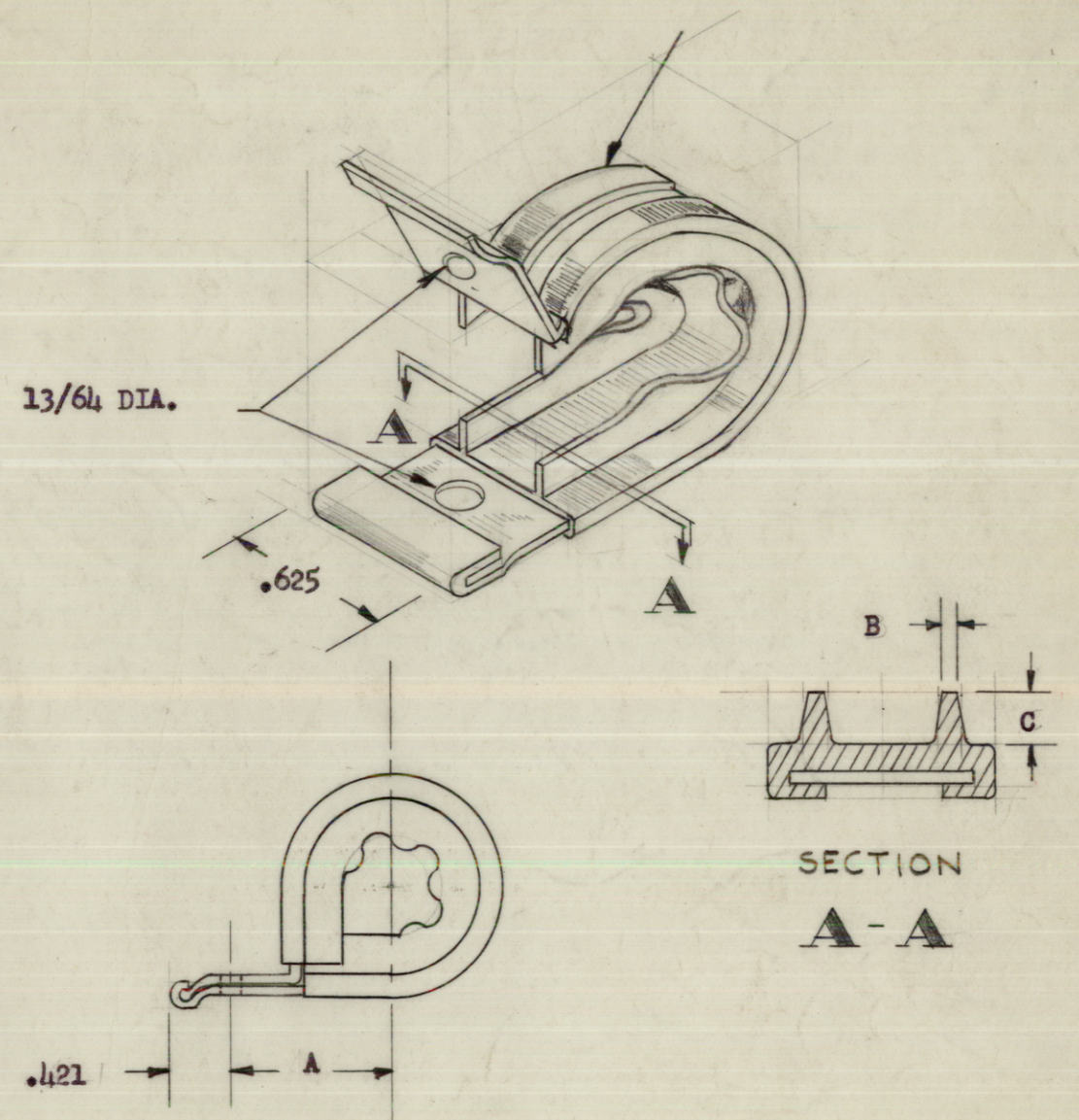


CU-131

TMC PART NO.	CABLE DIAMETER RANGE	A	B	C	MATERIAL THICKNESS
CU-131-1	1/16 thru 1/8	.625	.027	.125	.017
CU-131-2	Above 1/8 thru 1/4	.656	.027	.125	.017
CU-131-3	Above 1/4 thru 3/8	.687	.027	.125	.017
CU-131-4	Above 3/8 thru 1/2	.750	.027	.125	.025
CU-131-5	Above 1/2 thru 5/8	.812	.027	.125	.025
CU-131-6	Above 5/8 thru 3/4	.875	.027	.125	.025
CU-131-7	Above 3/4 thru 7/8	.937	.027	.125	.025
CU-131-8	Above 7/8 thru 1-1/16	1.000	.027	.125	.025
CU-131-9	Above 1-1/16 thru 1-1/4	1.125	.027	.125	.032
CU-131-10	Above 1-1/4 thru 1-1/2	1.250	.027	.125	.032

Extruded Neoprene Flame Resistant Cushion 1/32" Thick



NOTICE TO PERSONS RECEIVING THIS DRAWING

THE TECHNICAL MATERIEL CORPORATION claims proprietary right in the material disclosed herein. This drawing is issued in confidence for engineering information only and may not be reproduced or used to manufacture anything shown herein without permission from THE TECHNICAL MATERIEL CORPORATION to the user. This drawing is loaned for mutual assistance and is subject to recall at any time.

Property of:
THE TECHNICAL MATERIEL CORPORATION
 MAMARONECK, NEW YORK

NOTE: MATERIAL: ALUMINUM
 FINISH: S404-YELLOW IRIDITE

ISSUE	ITEM	CHANGED FROM	DATE	CH. NO.	DRAFTS	CHECKER	ENG. APP.
A	1	FINISH WAS ANODIZED #35	6-26-63	9376			<i>[Signature]</i>
TOLERANCES			SCALE: 5401-76 (C3064E)				
DEC. DIM. ±			MAXIMUM ALLOWABLE TOLERANCES HAVE BEEN DETERMINED AND ANY DEVIATIONS WILL BE CAUSE FOR REJECTION. REMOVE ALL BURRS AND SHARP EDGES				
FRAC. DIM. ±							
ANGULAR DIM. ±							

REQ. PER UNIT	MODEL	PROJECT NO.	ASS'Y. NO.	DATE
USED ON				

REQ. ITEM	PART NO.	DESCRIPTION
		THE TECHNICAL MATERIEL CORP MAMARONECK, NEW YORK
		CLAMP, CABLE
		MATERIAL
		TYPE & TEMPER
		HEAT TREAT. SPEC.
		DRAWN
		CHECKED
		FINAL
		FINISH & SPEC. NO.
		ELEC. DES. APP.
		MECH. DES. APP.