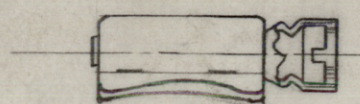


CU-129



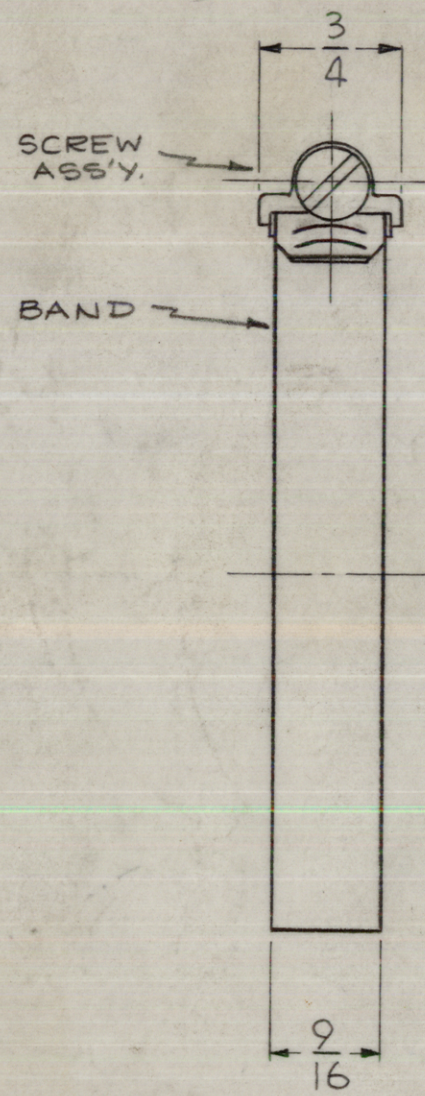
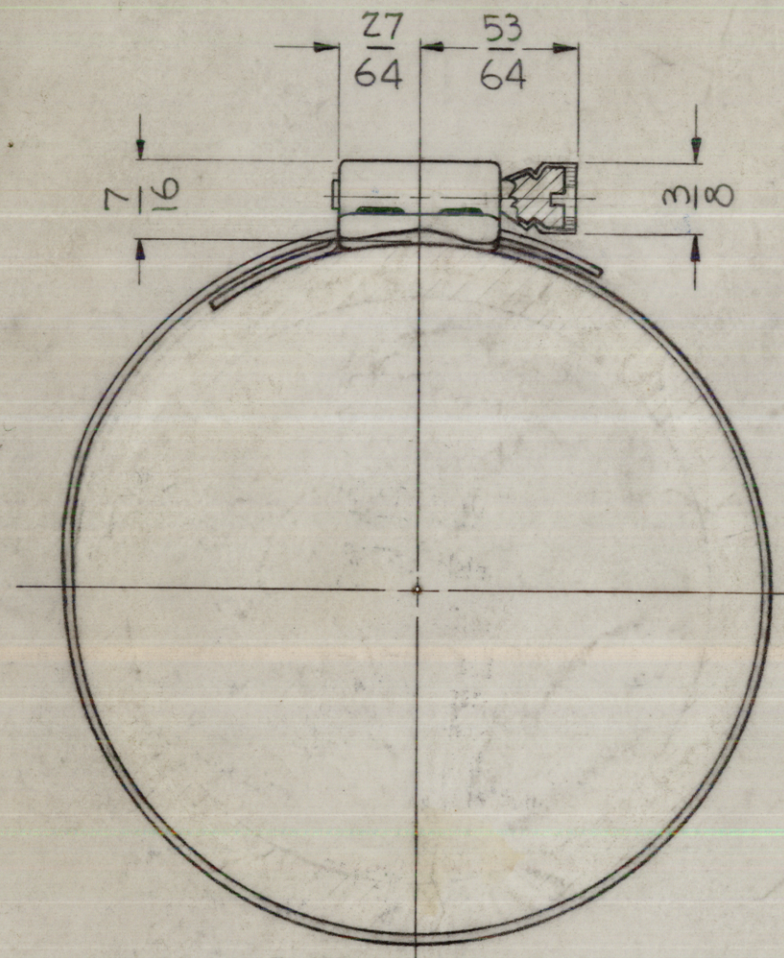
QUICK DISCONNECT



SCREWDRIVER SLOT

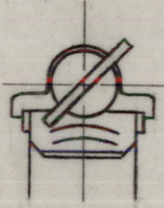
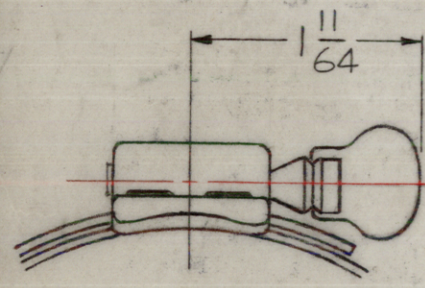


THUMB GRIP



SCREW TYPE & CLAMP MATERIAL		
TMC CODE	DESC.	MFG. NO.
SS	SCREWDRIVER SLOT, STAINLESS STEEL BAND & SCREW ASS'Y.	QS-200
WS	THUMB GRIP TYPE, STAINLESS STEEL BAND & SCREW ASS'Y.	QS-200
JS	QUICK DISCONNECT, STAINLESS STEEL BAND & SCREW ASS'Y.	QS-600
SC	SCREWDRIVER SLOT, STAINLESS STEEL BAND, CARBON STEEL SCREW ASS'Y.	QS-100
WC	THUMB GRIP TYPE, STAINLESS STEEL BAND, CARBON STEEL SCREW ASS'Y.	QS-100
JC	QUICK DISCONNECT, STAINLESS STEEL BAND, CARBON STEEL SCREW ASS'Y.	QS-500

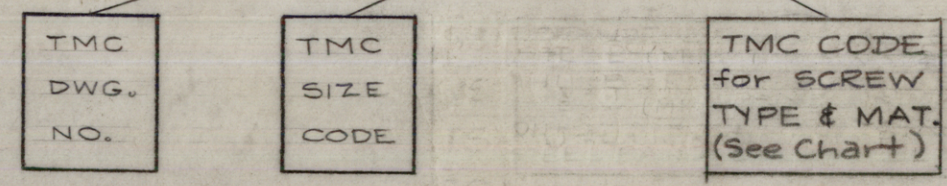
T.M.C. SIZE CODE	MFG. SIZE CODE	EFFECTIVE RANGE OF CLAMP DIAMETER	
		MIN.	MAX.
-1	-M6	7/16"	25/32"
-2	-M8	1/2"	29/32"
-3	-M10	9/16"	1-1/16"
-4	-M12	11/16"	1-1/4"
-5	-M16	13/16"	1-1/2"
-6	-M20	13/16"	1-3/4"
-7	-M24	1-1/16"	2"
-8	-M28	1-5/16"	2-1/4"
-9	-M32	1-9/16"	2-1/2"
-10	-M36	1-13/16"	2-3/4"
-11	-M40	2-1/16"	3"
-12	-M44	2-5/16"	3-1/4"
-13	-M48	2-9/16"	3-1/2"
-14	-M52	2-13/16"	3-3/4"
-15	-M56	3-1/16"	4"
-16	-M60	3-5/16"	4-1/4"
-17	-M64	3-9/16"	4-1/2"
-18	-M156	9-5/16"	10-1/4"
-19	-M116	6-7/8"	7-3/4"
-20	-M212	12-7/8"	13-3/4"
-21	-M96	5-5/8"	6-1/2"
-22	-M80	4 5/8"	5 1/2"



OPTIONAL TYPE W/ THUMB GRIP

TMC PART NO. TO BE IN THE FOLLOWING FORM:

CU-129-1-SS



PURCHASING INFORMATION (MFG. NO.)

QS-200-M6-S

MFG. TYPE MFG. SIZE

S=SCREW TYPE, W=THUMB TYPE, J=QUICK DISCONNECT

ISSUE	ITEM	CHANGED FROM	DATE	CH. NO.	DRAFTS	CHECKER	ENG. APP.
D	1	CU129-22 ADDED	5-20-61	14005	CJL	QCB	J
C	1	ADD; -21, M96, 5-5/8, 6-1/2	2-10-64	10858	A.M.	TL	J
B	1	CU-129-19 & 20 ADDED	3-7-63	8457	RT	JW	J
A	1	SIZE CODE "18" ADDED	10/26/60	3284	RT	JW	QCB

TOLERANCES SCALE: S 401-17

DEC. DIM. ±
FRAC. DIM. ±
ANGULAR DIM. ±
MAXIMUM ALLOWABLE TOLERANCES HAVE BEEN DETERMINED AND ANY DEVIATIONS WILL BE CAUSE FOR REJECTION; REMOVE ALL BURRS AND SHARP EDGES

REQ. PER UNIT	MODEL	PROJECT NO.	ASSY. NO.	DATE
	RFC-1			11-22-60
	G.P.T. 10,000	I. P. A.		1-8-59

REQ.	ITEM	PART NO.	DESCRIPTION	SYMBOL
			THE TECHNICAL MATERIEL CORP. MAMARONECK, NEW YORK	
			STAINLESS STEEL	
			CLAMP, HOSE	
			J.C. BIELE 16 10/59	
			TYPE & TEMPER HEATTREAT. SPEC.	
			FINISH & SPEC. NO.	
			DRAWN CHECKED FINAL APPROVAL	
			ELEC. DES. APP. MECH. DES. APP.	