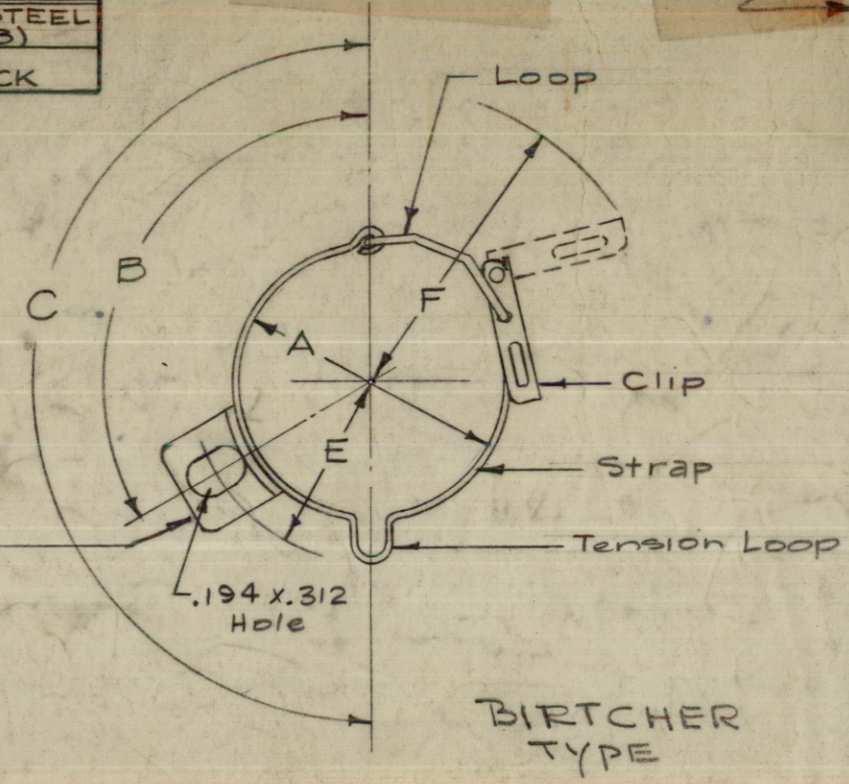
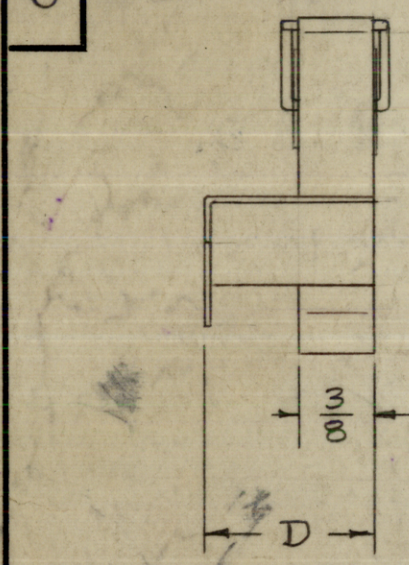


MATERIAL CHART	
CODE	MATERIAL
S	CORROSION RESISTANT STEEL PASSIVATED (MILGRADE 2B)
C	BERYLLIUM COPPER SILVER PLATED .0005 THICK

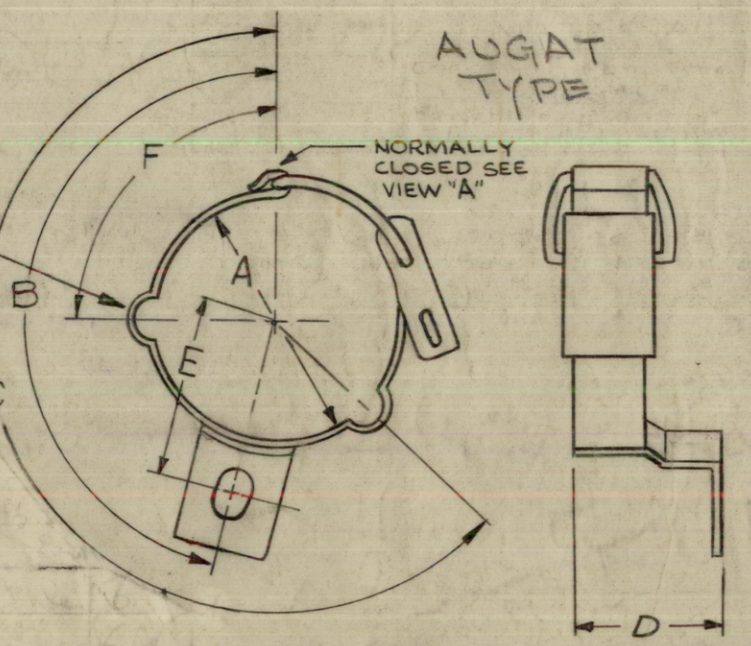
NOTE: CU-118-4 REPLACES CU-118-1

TMC Part No.	MFG. NO. AUGUT	MFG. NO. BIRCHER	DIMENSION					REMARKS	FIRST USED ON TUBE NO.
			A	B	C	D	E		
CU-118-1	PS168F1-183G	926C-3	1.375	120°	180°	15/16	29/32		5U4
CU-118-2	PS168UB3-943D	926H-22	1.617	60°	120°	3/4	1-1/16		6146
CU-118-3	PS168D1-183D	926B	1.250	115°	175°	3/4	27/32		5Y3
CU-118-4	PS140F6-2183H	+	1.375	120°	180°	1	1/32	OPEN END F-60°	FOR CE52
CU-118-5	170VD1-2232H	+	.937	58°	148°	1	27/32	OPEN END	
CU-118-6	PS168B1-2083H	+	1.165	160°	210°	1"	1"		
CU-118-7	SI68B5-2083H	+	1.165	160°	210°	1"	1"	OPEN END	
CU-118-8	PS140-F6-2183D		1.375	120°	180°	3/4	1/32	OPEN END	5U4G
CU-118-9	PS168UB9-943D		1.617	60°	120°	3/4	1/16	OPEN END	6080
CU-118-10	S2506-25		.718	140°	-	17/32	11/16	OPEN END	DD100
CU-118-11	PS168VA1-2083H	+	1.110	115°	175°	1"	31/32	OPEN END	RL-131



BIRTCHER TYPE

PURCHASING NOTE - WHEN ORDERING CLAMP WITH MFG. NO. SPECIFY MATERIAL & FINISH REQ'D.



AUGAT TYPE

CONFIGURATION OF OPEN END IF SPECIFIED IN COLUMN F.

VIEW "A"

THIS LOOP ON CU-118-4 ONLY  
NOTE - OFFSET BRACKET AS SHOWN APPLIES TO P2, P4, END P6 C

NORMALLY CLOSED SEE VIEW "A"

ISSUE	ITEM	CHANGED FROM	DATE	CH. NO.	DRAFTS	CHECKER	ENG. APP.
J	2	ON CU-118-4, CE52 REF ADDED	6-18-63	9313			
J	1	CU-118-11 ADDED					

TYPE DESIGNATION TO BE AS FOLLOWS:

CU-118-2-C

TMC DWG. NO. MATERIAL & SIZE OF CLAMP (see chart)

Ref - BIRTCHER & AUGAT TUBE CLAMPS

REQ. ITEM	PART NO.	DESCRIPTION	SYMBOL
		THE TECHNICAL MATERIEL CORP. MAMARONECK. NEW YORK	
	STOCK SIZE		
	SEE CHART		
	MATERIAL		
	CHART	16 <sup>3/5</sup> /58	
	TYPE & TEMPER	HEAT TREAT. SPEC.	RE DRAWN
	CHART		CHECKED
	FINISH & SPEC. NO.	ELEC. DES. APP.	MECH. DES. APP.

TOLERANCES  
DEC. DIM. ± .010  
FRAC. DIM. ± 1/64  
ANGULAR DIM. ± 5°

SCALE: -  
MAXIMUM ALLOWABLE TOLERANCES HAVE BEEN DETERMINED AND ANY DEVIATIONS WILL BE CAUSE FOR REJECTION. REMOVE ALL BURRS AND SHARP EDGES

REQ. PER UNIT	MODEL	PROJECT NO.	ASS'Y. NO.	DATE	USED ON