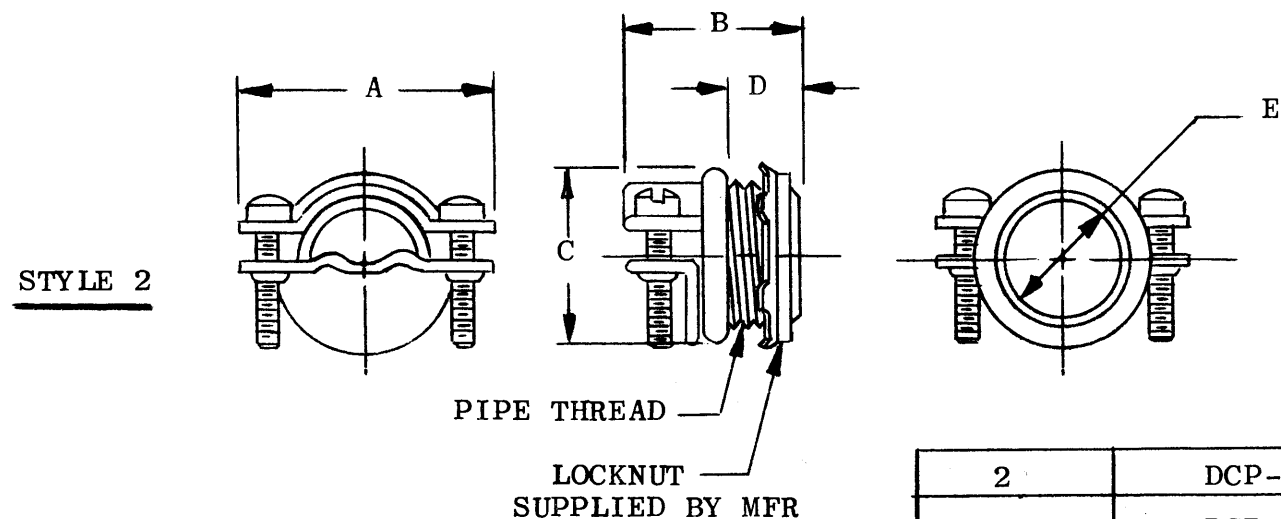
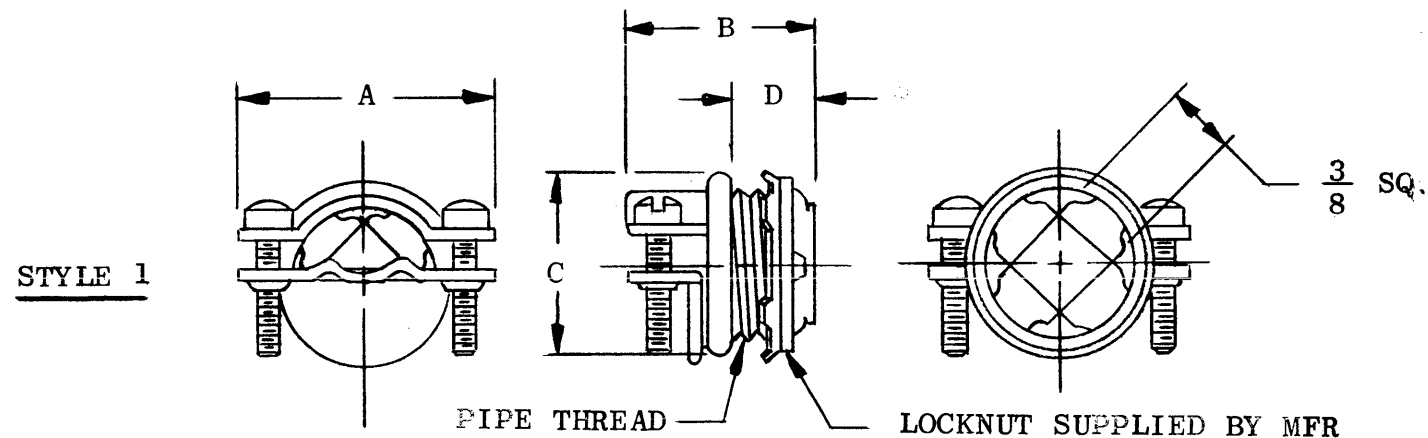


STANDARD DRAWING

TMC PART NUMBER	MFG PART NUMBER	STYLE	DIMENSIONS					PIPE THREAD	
			A	B	C	D	E	SIZE	MAJ. DIA.
CU113	3301	1	1-11/32	1-3/64	31/32	7/16		1/2	.823
CU113-2	3303	2	1-5/8	1-5/32	1-1/4	15/32	.800	3/4	1.034
CU113-3	3304	2	1-7/8	1-1/4	1-15/32	1/2	1.035	1	1.293

REVISIONS						
SYM	DESCRIPTION	DATE	E.M.N. NO.	DRAFT	CHKD	APPD
B	COMPLETELY REDRAWN & REVISED	4/28/66	16174	JL		<i>[Signature]</i>

MATERIAL-STEEL
FINISH - TABOLITE



MATERIAL-BODY-STEEL OR MALLEABLE IRON *
FINISH-STEEL PARTS-ZINC PLATED
*MALLEABLE IRON PARTS- CADMIUM PLATED PLUS ALUMINUM LACQUER

2	DCP-1	
2	DCP	
Q'TY./UNIT	MODEL USED ON	ASS'Y. NO.
SCALE	CODE	S401-35 OR EQUIV.

THE CONTENTS OF THIS DRAWING ARE THE EXCLUSIVE PROPERTY OF THE TECHNICAL MATERIEL CORP. ITS UNAUTHORIZED USE OR REPRODUCTION IN WHOLE OR IN PART IS STRICTLY FORBIDDEN.

REQ'D.	ITEM	PART NUMBER	DESCRIPTION	SYMBOL
LIST OF MATERIAL				
MATERIAL			THE TECHNICAL MATERIEL CORP. MAMARONECK, NEW YORK	
SEE NOTES			TITLE CLAMP, FLEXIBLE CABLE	
FINISH			SEE NOTES	
UNLESS OTHERWISE SPECIFIED DIMENSIONS ARE IN INCHES AND INCLUDE CHEMICALLY APPLIED OR PLATED FINISHES		DRAWN J. LESHINSKI	DATE 4/28/66	FINAL APPROVAL <i>[Signature]</i>
		CHECKED <i>[Signature]</i>	DATE	DATE 5/12/66
		ELECT. DES.	DATE	CU113 - B
		MECH. DES.	DATE	
		SHEET		REV. LTR.

DECIMALS	FRACTIONS
.X ± .05	± 1/64
.XX ± .01	ANGLES
.XXX ± .005	± 0° 30'

TOLERANCES