

STANDARD DRAWING

IF IT IS FOUND DESIRABLE TO CHANGE ANY TOLERANCE OR OTHER DETAIL SPECIFIED ON THIS DRAWING NOTIFY THE PURCHASER PROMPTLY.

MAXIMUM ALLOWABLE TOLERANCES HAVE BEEN DETERMINED AND DEVIATIONS WILL BE CAUSE FOR REJECTION. REMOVE ALL BURRS AND SHARP EDGES

CU-104 B

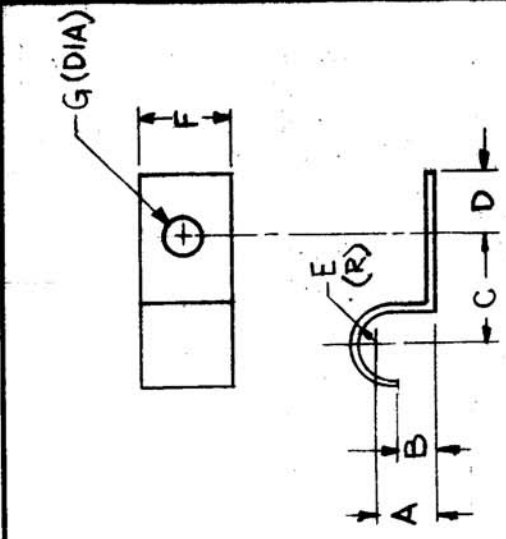
USED ON

DATE

ASSY. NO.

PROJECT NO.

MODEL



DIMENSIONS FOR REFERENCE ONLY

TMC PART NO.	MFRS. REF.	MFRS. PART NO.	A	B	C	D	E (R)	F	G (DIA)
CU-104-1	A	1036	1/16	1/16	3/8	1/4	5/32	1/2	.169
CU-104-2	A	1045	1/16	1/16	3/8	1/4	5/32	1/2	.196
CU-104-3	A	1065	3/32	3/64	1/4	5/32	1/16	11/32	.149
CU-104-4	A	1066	1/8	3/64	9/32	5/32	3/32	11/32	.149
CU-104-5	B	471-6	3/32	1/8	3/8	3/16	9/64	3/8	.144 .149
CU-104-6	A	1069	9/32	3/32	17/32	1/4	7/32	13/32	.180
CU-104-7	A	8521	1/16	1/16	3/8	1/4	5/32	1/2	.144

MFRS. REF. A - CINCH MFR. CORP.
B - ZIERICK MFR. CORP.

REQ. ITEM	DESCRIPTION	SYMBOL
	THE TECHNICAL MATERIEL CORP. MAMARONECK. NEW YORK	
	CLAMP, CABLE	
	C.O.D. 12-4-52	G.T.O
	DRAWN	ELEC. DES. APP. MECH. DES. APP.
	12/3/52	G.T.O
	CHECKED	FINAL APPROVAL
		CU-104 B

ISSUE ITEM	CHANGED FROM	DATE	CN. NO.	DRAFTS CHECKER	ENG. APP.
5	CU-104-5 DIMS. CLARIFIED	1-25-63	5560	JA	JA
4	MFR NO WAS CATALOG NO				
3	TOL. ADDED TO CHART				
2	MFRS REF ADDED TO CHART				
1	FINISH WAS NICKEL PLATE				
A	NI PLATE WAS CAD (SPEC CHART)	9/4/61			

.032 THICK

STOCK SIZE
STEEL
MATERIAL WEIGHT PER PC.
COLD ROLLED
TYPE & TEMPER

HEAT TREAT. SPEC.
S-105 (CAD. PLATE)
FINISH & SPEC. N.

DRILL, PUNCH, COMMERCIAL STOCK SIZES AND MANUFACTURERS TOLERANCES ARE NOT INCLUDED.

DEC. DIM. ± 1/64
FRAC. DIM. ± 1/64
ANGULAR DIM. ±