

IF IT IS FOUND DESIRABLE TO CHANGE ANY TOLERANCE OR OTHER DETAIL SPECIFIED ON THIS DRAWING NOTIFY THE PURCHASER PROMPTLY.

MAXIMUM ALLOWABLE TOLERANCES HAVE BEEN DETERMINED AND DEVIATIONS WILL BE CAUSE FOR REJECTION. REMOVE ALL BURRS AND SHARP EDGES

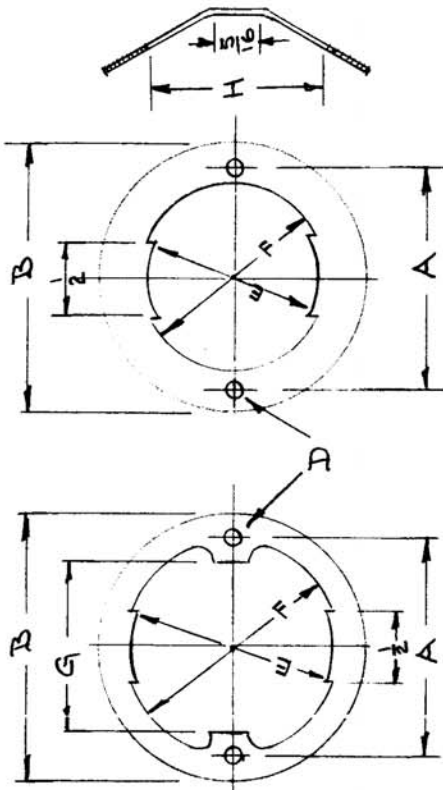
STANDARD DRAWING

CU-100

A

USED ON

TMC PART NO	CINCH NO	TYPE	MODEL			PROJECT NO.			ASSY. NO.			DATE
			TUBE BASE D.	A	B	C	D	E	F	G	H	
CU-100-1	8476	2	1.165	1.312	1 1/2	1/2	.136	1.187	1 7/32	1	1 1/32	
CU-100-2	13382	2	1.275	1.312	1 3/16	1/2	.144	1.300	1 2/16	1	1 5/32	
CU-100-3	8599	2	1.275	1.500	1 3/16	1/2	.136	1.300	1 2/16	1 3/16	1 5/32	
CU-100-4	12111	2	1.375	1.312	1 3/16	1/2	.143	1.406	1 7/16	1	1 9/32	
CU-100-5	8517	2	1.375	1.500	1 3/16	1/2	.143	1.406	1 7/16	1 5/32	1 9/32	
CU-100-6	8548	3	1.165	1.500	1 3/16	1/2	.136	1.187	1 7/32	1	1 1/32	



TYPE-2

TYPE-3

REF: CINCH MFG. CORP.

REQ. ITEM	PART NO.	DESCRIPTION	SYMBOL
.015		THE TECHNICAL MATERIEL CORP. MAMARONECK. NEW YORK	
STOCK SIZE			
MATERIAL		HOLDER, TUBE	
WEIGHT PER PC.			
ANNEALED			
TYPE & TEMPER			
HEAT TREAT. SPEC.			
CAD. PLATE-S-105			
FINISH & SPEC. NO.			

A	1	TYPE-3 ADDED	8-18-53	1	JAB	C.P.D.	PJB
ISSUE ITEM	CHANGED FROM	DATE	CN. NO.	DRAFTS	CHECKER	ENG. APP.	
TOLERANCES							
SCALE							
DRILL, PUNCH, COMMERCIAL STOCK SIZES AND MANUFACTURERS TOLERANCES ARE NOT INCLUDED.							
DEC. DIM. ±							
ALL OTHERS ANGULAR DIM. ±							
FINISH & SPEC. NO. ±							