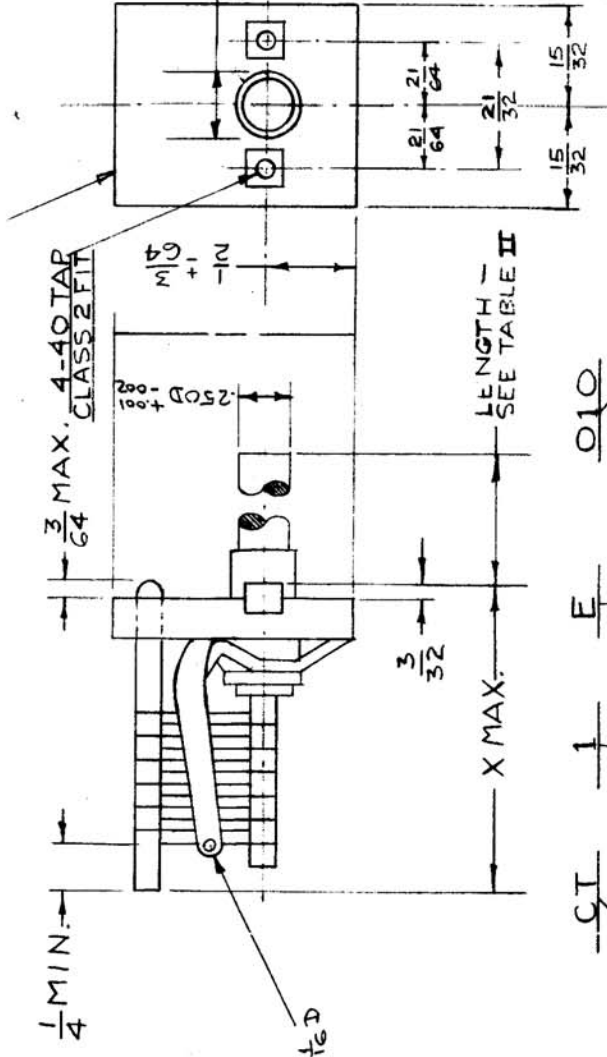


IF IT IS FOUND DESIRABLE TO CHANGE ANY TOLERANCE OR OTHER DETAIL SPECIFIED ON THIS DRAWING NOTIFY THE PURCHASER PROMPTLY.

MAXIMUM ALLOWABLE TOLERANCES HAVE BEEN DETERMINED AND DEVIATIONS WILL BE CAUSE FOR REJECTION. REMOVE ALL BURRS AND SHARP EDGES

CLASS	GO	DC.
1	RMS VOLT	VOLTS
2	600	850
3	800	1,150
	1,200	1,700

CHAR.	SHAFT TYPES	SHAFT LG.
B	SLOTTED FOR SCREEN DRIVER	7/16
C	DO	7/16
E	ROUND FOR KNOB SETTING	1
H	DO	1 1/2



CT 1 E O10

COMPONENT CLASS CHARACTER- CAPACITANCE

REF: JAN-C-92 AND AMEND.

REQ. ITEM	PART NO.	DESCRIPTION	SYMBOL
	ff	THE TECHNICAL MATERIEL CORP. MAMARONECK, NEW YORK	
	ff	CAPACITORS, AIR DIELECTRIC, VARIABLE	
	ff	STOCK SIZE	
	ff	MATERIAL	
	ff	WEIGHT PER PC.	
	ff	TYPE & TEMPER	
	ff	HEAT TREAT. SPEC.	
	ff	FINISH & SPEC. NO.	

ISSUE ITEM	CHANGED FROM	DATE	CN. NO.	DRAFTS CHECKER	ENG. APP.

ALL OTHERS	DEC. DIM. \pm	FRAC. DIM. \pm	ANGULAR DIM. \pm
		$\frac{1}{32}$	

SCALE	TOLERANCES *

DRAWN	ELEC. DES. APP.	MECH. DES. APP.
<i>J. J. J.</i>		

CHECKED	FINAL APPROVAL
<i>J. J. J.</i>	CT

STANDARD DRAWING

CT

USED ON

MODEL	PROJECT NO.	ASSY. NO.	DATE

TYPE DESIGNATION	MINIMUM	MAXIMUM	CAPACITANCE	(MAX.)
CT1-010	3.5	9.0	4.0	15/16
CT1-025	4.0	23.0	5.0	1 1/16
CT1-040	5.0	42.0	6.0	1 3/16
CT1-075	6.0	75.0	7.5	1 1/2
CT1-100	7.5	99.0	9.0	1 11/16
CT1-135	9.0	135.0	9.0	1 5/16
CT1-150	9.0	143.0	9.0	1 5/16
CT2-010	3.5	9.0	4.0	1 3/32
CT2-025	4.0	23.0	5.0	1 3/8
CT2-040	5.0	42.0	6.0	1 5/8
CT2-075	6.0	75.0	7.5	1 29/32
CT2-100	7.5	99.0	9.0	1 1/4
CT3-010	4.0	23.0	5.5	1 3/4
CT3-025	4.5	42.0	6.5	2
CT3-040	5.5	75.0		
CT3-075	6.5			