

# STANDARD DRAWING

IF IT IS FOUND DESIRABLE TO CHANGE ANY TOLERANCE OR OTHER DETAIL SPECIFIED ON THIS DRAWING NOTIFY THE PURCHASER PROMPTLY.

MAXIMUM ALLOWABLE TOLERANCES HAVE BEEN DETERMINED AND DEVIATIONS WILL BE CAUSE FOR REJECTION. REMOVE ALL BURRS AND SHARP EDGES

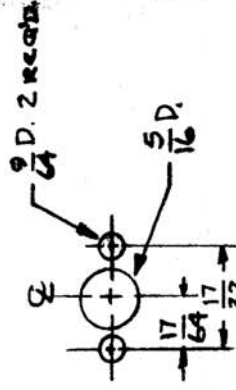
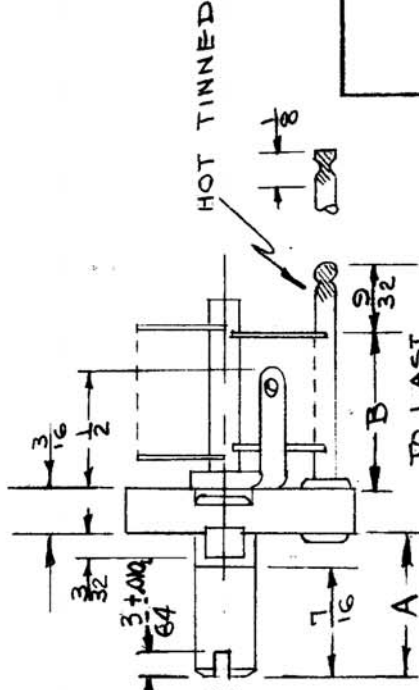
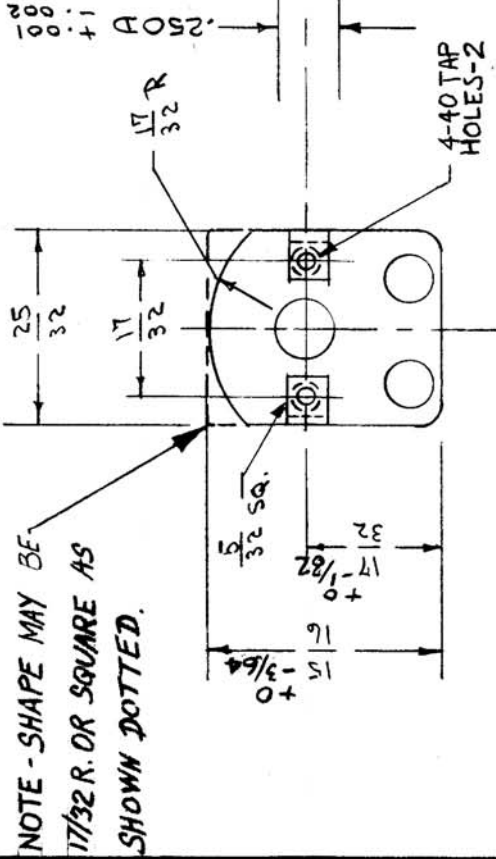
CT-103 G

USED ON

PROJECT NO.

MODEL

ASSY. NO.



DRILLING LAYOUT

TMC NO.	HMM MFG. NO.	JOHNSONS PART. NO.	CAPACITY MIN.	CAPACITY MAX.	PLATES	"A"	"B"
CT-103-1	MARC-508 SPECIAL	148-4-11	3.2	5.0	19	9/16 (.562)	37/64
CT-103-2		148-5-11	3.9	7.5	29	9/16 (.562)	27/32

REF: E. F. JOHNSON HAMMARLUND MFG. CO -

ISSUE ITEM	CHANGED FROM	DATE	CN. NO.	DRAFTS CHECKER	ENG. APP.
G	ON PART NO. CHANG. CT-103-2... ADD DIM. B' REVIS	10.7.64	12543	RF	
F	3/64 ± .010 DIM WAS 1/64 ± 1/64 TOLERANCES REVIS	4/26/64	4731	RF	
E	2 TOLERANCES ADDED	10/2/64	6006	RF	
D	1 JOHNSONS PART NO. ADDED TO CHART DRILLING LAYOUT ADD. 9/11/20/54				
C	3 STATOR WAS ROTOR	7/2/54	3	RF	
B	2 SLOT ADDED	11/2/54	2	RF	
A	1 MFG. NO WAS MARC-50	11/2/54	1	RF	

REQ. ITEM	PART NO.	DESCRIPTION	SYMBOL
		THE TECHNICAL MATERIEL CORP.	
		MAMARONECK, NEW YORK	
		CAPACITOR, VARIABLE	
		AIR TRIMMER	
		C.I.D. 10-2-SY	
		DRAWN	
		ELEC. DES. APP.	
		CHECKED	
		MECH. DES. APP.	
		HEAT TREAT. SPEC.	
		FINISH & SPEC. N.	
		FINAL APPROVAL	